



Detecting Openings for Indoor/Outdoor Registration

Rahima Djahel, Pascal Monasse, Bruno Vallet

► To cite this version:

Rahima Djahel, Pascal Monasse, Bruno Vallet. Detecting Openings for Indoor/Outdoor Registration. ISPRS congress 2022, Jun 2022, Nice, France. pp.177-184, 10.5194/isprs-archives-XLIII-B2-2022-177-2022 . hal-03793990

HAL Id: hal-03793990

<https://enpc.hal.science/hal-03793990>

Submitted on 2 Oct 2022

HAL is a multi-disciplinary open access archive for the deposit and dissemination of scientific research documents, whether they are published or not. The documents may come from teaching and research institutions in France or abroad, or from public or private research centers.

L'archive ouverte pluridisciplinaire **HAL**, est destinée au dépôt et à la diffusion de documents scientifiques de niveau recherche, publiés ou non, émanant des établissements d'enseignement et de recherche français ou étrangers, des laboratoires publics ou privés.

DETECTING OPENINGS FOR INDOOR/OUTDOOR REGISTRATION

Rahima Djahel^{1*}, Bruno Vallet², Pascal Monasse¹

¹ LIGM, Ecole des Ponts, Univ Gustave Eiffel, CNRS, F-77454 Marne-la-Vallée, France -firstname.lastname@enpc.fr

² LASTIG, Univ Gustave Eiffel, IGN-ENSG, F-94160 Saint-Mandé, France - firstname.lastname@ign.fr

KEY WORDS: Openings, Registration, 3D segments, RANSAC, Ray Tracing

ABSTRACT:

Indoor/Outdoor modeling of buildings is an important issue in the field of building life cycle management. It is seen as a joint process where the two aspects collaborate to take advantage of their semantic and geometric complementary. This global approach will allow a more complete, correct, precise and coherent reconstruction of the buildings. The first issue of such modeling is thus to precisely register this data. The lack of overlap between indoor and outdoor data is the most encountered obstacle, more so when both data sets are acquired separately and using different types of sensors. As an opening in the façade is the unique common entity that can be seen from inside and outside, it can help the registration of indoor and outdoor point clouds. So it must be automatically, accurately and efficiently extracted. In this paper, we start by proposing a very efficient algorithm to detect openings with great precision in both indoor and outdoor scans. Afterwards, we integrate them in a registration framework. As an opening is defined by a rectangular shape composed of four segments, two horizontal and two vertical, we can write our registration problem as a minimization of a global robust distance between two segment sets and propose a robust approach to minimize this distance using the RANSAC paradigm.

1. INTRODUCTION

1.1 Context

The topic of building reconstruction draws increasing interest and has various applications such as urban planning, virtual tourism. BIM (Building Information Model) is also becoming a de facto standard to handle the whole life cycle of buildings and 3D city models are central to manage smart cities and in particular to realize environmental simulations. Combining indoor and outdoor modeling of buildings remains a challenging task. The first issue of such modeling is to precisely register the indoor and outdoor data sources. Openings are the most obvious common entity to link the inside and outside data. As such, it can help the registration of indoor and outdoor point clouds. Therefore, in this paper, we propose to detect rectangular openings with high precision and integrate them in a registration framework.

1.2 State of the art

1.2.1 Openings detection Many works have dealt with the windows detection problem. A hole based windows extraction method was proposed in Pu and Vosselman (2007), where a segmentation process was performed in order to group laser points in planar segments. A TIN (the Triangular Irregular Network) of the wall segments is generated after recognizing them. the windows points, extrusion points and door points are identified by classify the hole points. An automatic approach to facade and window detection from mobile LiDAR Data by combining two strategies was proposed in Wang et al. (2011). The first strategy used Principle Component Analysis (PCA) to cluster point clouds into potential facade region. while the second extract the facade by applying RANSAC (Random

Sample Consensus) plane fitting to potential facade region. Finally, the windows detection is achieved in two main steps: potential window point detection and window localization. The authors of Tuttas and Stilla (2011) have proposed a new method for detecting windows in airborne multi-aspect laser scanning data which represent a sparse point clouds. They started by detecting facade planes using point normals and region growing algorithm. Then, the windows are detected using the indoor points (points lying behind the detected facade planes) which have a special interest due to their regularities in appearance. Another method for window and door detection has been proposed in Nguattem et al. (2014), which apply a model selection based on Bayes factor and use a Monte Carlo simulation to generate and score competing models. This method has proven its ability to distinguish between various window and door shapes. A robust algorithm to locate opening corners for terrestrial LiDAR points has been proposed in Li et al. (2018). This algorithm searches and analyzes the facade with a globally wide sliding window that reduce the influence of noise in horizontal and vertical directions. The changes in facade elements was inspected by computing gradients in each sliding window, applying statistical analysis and deriving the symmetry information. The authors of Recky and Leberl (2010) have proposed a modified gradient projection method designed for automatic processing of complex building facades. This algorithm is able to detect many different windows types without a learning step. An automatic method to detect windows and estimate their parameters in 3D LiDAR point clouds has been proposed in Aijazi et al. (2014). This method fuses information from both symmetrical and temporal correspondences to estimate window features. A new algorithm for openings detection in indoor point clouds has been proposed in Assi et al. (2019a). Holes corresponding to openings were detected after identifying walls in 2D binary image. Each opening was submitted to an energy function with two terms: data and coherence. Those functions help the authors to determine if an opening is due to

* Corresponding author

a window/door or an object obstructing the acquisition.

1.2.2 LiDAR scans registration Integrating multi-platform, multi-angle, and multi-temporal data is a core step in several fields of research such as computer vision, remote sensing and 3D modeling. To achieve this integration, a registration step is necessary. For Terrestrial Laser Scanning (TLS), there are two main families of registration methods depending on the number N of input point clouds: pairwise ($N = 2$) and multi-view ($N > 2$) registration. In this work we are interested in the pairwise category. The most used approach to solve this problem is feature-based registration which can be decomposed in three main steps: extracting geometric features (points, curves, planes, and/or surfaces), selecting the correspondences, and using selected correspondences to estimate the optimal transformation Dong et al. (2018). The ICP algorithm (Iterative Closest Points) Besl and McKay (1992) and its proposed improvements Low (2004) Grant et al. (2012) are considered as a reference for the iterative approximation methods. The transformation parameters can be iteratively estimated by generating pairs of correspondences and minimizing the error metric (point to point distance, point to plane distance, ...). A major disadvantage of ICP is its sensitivity to initialization: if the initial data are not close enough, ICP converges towards a local minimum corresponding to a wrong registration. In order to minimise the search space for correspondence between two point clouds and to increase the accuracy of the registration, the authors of Rabbani et al. (2007) have used standard shapes, especially planar and cylindrical surfaces to introduce two solutions suitable in industrial environment: an indirect solution which separates object fitting and registration steps, a direct solution which simultaneously determines the shape and pose parameters of the objects as well as the registration parameters. An NDT (Normal Distribution Transform) algorithm and its variants are proposed to deal with the problem of 3D points cloud registration. A certain cost is obtained that evaluates the alignment quality between the two point clouds, according to the desired transformation between the two point clouds and using a set of Gaussian distributions with different probability density functions (PDFs) to represent the referenced point clouds Dong et al. (2020) Magnusson et al. (2007). A registration workflow simulating the well-known Random Sample Consensus method (RANSAC) was proposed in Al-Durgham et al. (2013) to register overlapping terrestrial laser scans by using 3D linear features to establish an automatic matching strategy.

1.2.3 Indoor/Outdoor registration The registration of indoor and outdoor scans is a challenging problem for Indoor/Outdoor building modeling. Two registration and georeferencing methods for exterior and interior point clouds, in the case of heritage building recording, are tested in Murtiyoso and Grussenmeyer (2018). The first corresponds to the independent georeferencing method, in which the indoor and outdoor scans were georeferenced separately. The second is a keypoint based registration method. Those tie points concern mainly openings such as windows, which are evenly distributed throughout the building. Windows are manually segmented in the indoor and outdoor point clouds. Then keypoints are detected for both sides of the windows, resulting in two sets of keypoints. The work presented in Assi et al. (2019b) has proven that the use of key points rather than the entirety of a point cloud for an ICP algorithm can improve its performance to register indoor and outdoor scans. An approach for automatically aligning the non-overlapping indoor and outdoor parts of a 3D building model computed from image based 3D reconstructions has been pro-

posed in Koch et al. (2016). This alignment has been performed by identifying corresponding 3D structures that are part of the interior and exterior model (e.g. openings like windows).

The authors of Djahel et al. (2021) have proposed a new planar polygons based registration algorithm to efficiently register indoor and outdoor scans. The proposed algorithm starts by clustering polygons according to their normal direction, then by their offset in the normal direction. The polygon correspondences (hypotheses) are found using the obtained clusters. An optimal transformation is estimated for each hypothesis and the best one is selected according to a quality criteria. However, this method cannot recover translations along the façade plane if only a single wall is seen from outside through the windows (which is a rather common case).

1.3 Data

This study was carried out using two terrestrial LiDAR data acquisitions on the Zoological Museum of Strasbourg:

- Mobile outdoor acquisition by the Stéréopolis MMS (Mobile Mapping System) which gives access to the sensor topology (adjacency between successive pulses in the same line and between lines) 2.
- Static indoor acquisition by a static Laser scanner with no access to sensor topology 1.



Figure 1. Indoor scan acquired in static mode

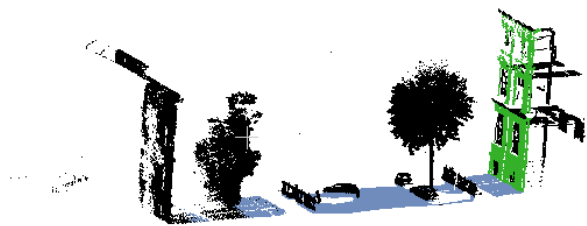


Figure 2. Outdoor scan acquired in dynamic mode

2. OPENINGS DETECTION

According to Pu and Vosselman (2007), we can define the following characteristics for an opening:

- Most openings have a rectangular vertical shape of limited extent (a few meters) positioned within a vertical plane (the wall)

- Openings which are not covered with curtains cause holes on the wall segments where the Laser beams traverse the wall plane.
- Openings which are covered with curtains reflect the Laser beam which produces Lidar points which are not on the wall plane.

According to these properties we propose a robust method to detect openings in LiDAR data compatible with any acquisition mode (mobile outdoor or static indoor) which is summarized in figure 3.

2.1 LiDAR data segmentation and facade selection

RANSAC is the most used method for LiDAR data segmentation. But, it has some limitations such as under-segmentation (grouping points from nearly co-planar but disjoint surfaces in a single planar primitive). In order to overcome the limitation of RANSAC, we chose to use the two solutions proposed in Djahel et al. (2021):

2.1.1 RANSAC Based on Sensor Topology If we have access to the sensor topology (as it is the case for our outdoor scan), we can use it to improve the polygon RANSAC detector according to the recent method proposed in Guinard et al. (2020).

2.1.2 Polygon MSAC If we do not have access to sensor topology (as it is the case for our indoor scans), we use a straight-forward adaptation of MSAC (M-estimator Sample Consensus), which is a variant of RANSAC. MSAC gives to each point a penalty score measuring how well the point corresponds to the model (2) while RANSAC gives the same unit score to all the inliers (1).

$$C_{RANSAC}(e_i) = \begin{cases} 0 & \text{if } \epsilon_i^2 < t^2 \\ 1 & \text{otherwise} \end{cases} \quad (1)$$

$$C_{MSAC}(\epsilon_i) = \min\left(\frac{\epsilon_i^2}{t^2}, 1\right) \quad (2)$$

After the planar polygons extraction, we have selected the facades as large vertical polygons.

2.2 Evidence of openings detection

As the LiDAR beams usually cross the facade through openings, we propose to start by detecting the evidences of openings as the intersection points of these beams and the detected facades using Ray Tracing:

1. For each point P_i , we trace a ray R_i from the LiDAR optical center O to P_i .
2. we find the intersection points P_i^j of R_i with the supporting planes \mathcal{P}_j of each facade polygon F_j .
3. If one P_i^j lies inside the polygon and the distance between P_i and $\mathcal{P}_j > d_{min}$, we add P_i^j to the list E_j of evidences of openings on wall j . In Section 2.2, we use $d_{min} = 0.1m$ in order to exclude noisy points that may still represent points of the facade.

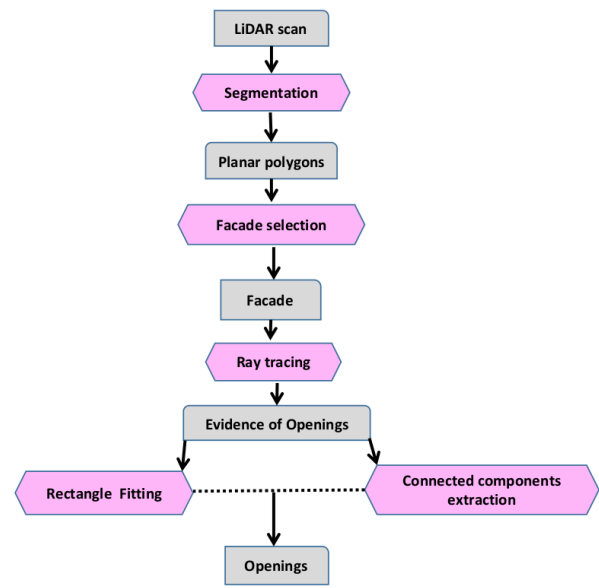


Figure 3. Openings detection pipeline

2.3 Outline openings extraction

For each wall plane \mathcal{P}_j the evidences of openings E_j are grouped in vertical rectangles:

- Extract the connected components of E_j with a distance threshold.
- Estimate the minimum bounding rectangle of each component.
- For each rectangle, transform each 2D corner to a 3D point and create the four 3D line segments corresponding to its edges to get a 3D representation of our shape as shown in Figures (5, 4).

3. OPENINGS BASED REGISTRATION ALGORITHM

Registration is usually performed by matching features. In the present work, the features are the two sets of vertical openings rectangles detected from indoor and outdoor scans. Selection of correspondences is a crucial step for a successful registration because a bad choice can lead to a bad estimate of the optimal transformation. In our case, the openings are not characteristic enough to match them robustly independently. As an opening is defined by a rectangular shape composed of four segments, two horizontal and two vertical, we can write our registration problem as a minimization of a global robust distance between two segment sets. To achieve this minimization with high accuracy and robustness, we must select the right matches and choose the good optimization algorithm.

3.1 Distance between segment sets

We propose to define a distance between two sets of 3D segments in a way that minimizing this distance will favor important overlaps between segments and small distances over these overlaps while being robust to outliers, which is to be expected as it is possible that openings extracted from one data set will have no counterpart in the other. This will implicitly also minimize angles between the segments as an important angle with

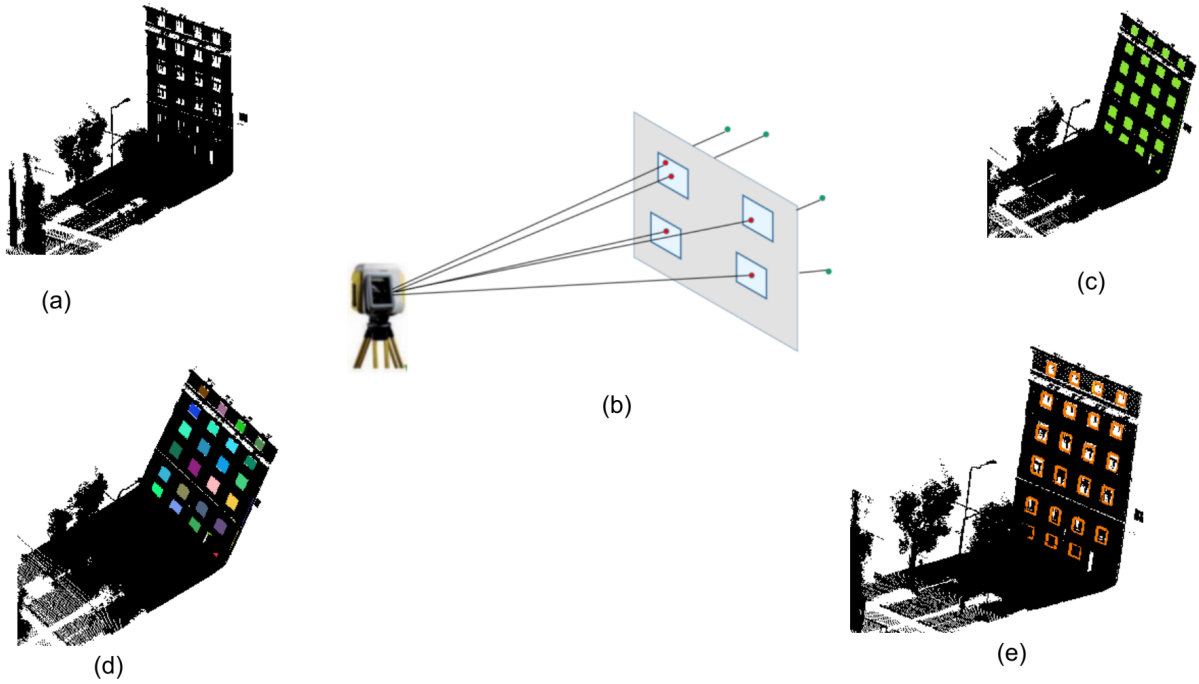


Figure 4. Illustration of opening detection steps on an outdoor scan . (a) initial outdoor scan. (b) principle of opening evidence detection. (c) detected openings evidence (green points). (d) connected components of opening evidence. (e) openings outlines (in orange).

an important overlap implies a large distance. Given two sets of 3D segments $[A_i^1 B_i^1]$ and $[A_j^2 B_j^2]$ with center points $G_i^k = (A_i^1 + B_i^1)/2$ and direction vectors $\mathbf{d}_i^k = \overrightarrow{A_i^k B_i^k} / \|\overrightarrow{A_i^k B_i^k}\|$, we start by defining a relative overlap between two segments over the projection p on the bisector of the two segments:

$$overlap([A_i^1 B_i^1], [A_j^2 B_j^2]) = \frac{|p([A_i^1 B_i^1]) \cap p([A_j^2 B_j^2])|}{\min(|p([A_i^1 B_i^1])|, |p([A_j^2 B_j^2])|)}$$

We define this bisector as the line passing through the closest point $P_{i,j}$ to $(A_i^1 B_i^1)$ and $(A_j^2 B_j^2)$ and oriented by the bisector $\mathbf{v}_{i,j}$ of \mathbf{d}_i^1 and \mathbf{d}_j^2 . Calling:

$$[\mathbf{v}]_{\times} = \begin{pmatrix} 0 & -v_z & v_y \\ v_z & 0 & -v_x \\ -v_y & v_x & 0 \end{pmatrix} \text{ such that } [\mathbf{v}]_{\times} \mathbf{u} = \mathbf{v} \times \mathbf{u} \quad (3)$$

we have:

$$P_{i,j} = ([\mathbf{d}_i^1]_{\times} [\mathbf{d}_i^1]_{\times} + [\mathbf{d}_j^2]_{\times} [\mathbf{d}_j^2]_{\times})^{-1} ([\mathbf{d}_i^1]_{\times} [\mathbf{d}_i^1]_{\times} A_i^1 + [\mathbf{d}_j^2]_{\times} [\mathbf{d}_j^2]_{\times} A_j^2) \quad (4)$$

The projection on the bisector is:

$$p(P) = P_{i,j} + (\overrightarrow{P_{i,j} P} \cdot \mathbf{v}_{i,j}) \mathbf{v}_{i,j} \quad (5)$$

and the projected points have a linear coordinate:

$$c(P) = \overrightarrow{P_{i,j} P} \cdot \mathbf{v}_{i,j} \quad (6)$$

The length of the projected segment is then defined as

$$|p([A_i^1 B_i^1])| = \max(c(A_i^1), c(B_i^1)) - \min(c(A_i^1), c(B_i^1)) \quad (7)$$

and the overlap length of the projected segments as:

$$|p([A_i^1 B_i^1]) \cap p([A_j^2 B_j^2])| = \min(\max(c(A_i^1), c(B_i^1)), \max(c(A_j^2), c(B_j^2))) - \max(\min(c(A_i^1), c(B_i^1)), \min(c(A_j^2), c(B_j^2))) \quad (8)$$

We then define a distance between a segment $L_1 \in \mathcal{L}_1$ and a segment set \mathcal{L}_2 :

$$E^{d_{thr}}(L_1, \mathcal{L}_2) = |L_1^2| d_{thr}^2 - \sum_{L_2 \in \mathcal{L}_2} |L_1^2 \cap L_2^1| \max(0, d_{thr}^2 - \text{dist}(L_1, L_2)^2) \quad (9)$$

$$\sum_{L_2 \in \mathcal{L}_2} |L_1^2 \cap L_2^1| \max(0, d_{thr}^2 - \text{dist}(L_1, L_2)^2) \quad (10)$$

where d_{thr} is a distance threshold above which a line is just considered an outlier and dist is a metric distance between segments, for instance:

$$\text{Dist}([A_i^1 B_i^1], [A_j^2 B_j^2]) = \quad (11)$$

$$\frac{\text{dist}(A_i^1, [A_j^2 B_j^2]) + \text{dist}(B_i^1, [A_j^2 B_j^2])}{4} + \quad (12)$$

$$\frac{\text{dist}(A_j^2, [A_i^1 B_i^1]) + \text{dist}(B_j^2, [A_i^1 B_i^1])}{4}. \quad (13)$$

For each line pair, this distance is 0 if L_1 is completely overlapped by segments of \mathcal{L}_2 with 0 distance over these overlaps.

Finally we can write our final symmetrized robust distance between 3D segments sets as:

$$\text{dist}(\mathcal{L}_1, \mathcal{L}_2) = \sum_{L_1 \in \mathcal{L}_1} E^{d_{thr}}(L_1, \mathcal{L}_2) + \sum_{L_2 \in \mathcal{L}_2} E^{d_{thr}}(L_2, \mathcal{L}_1) \quad (14)$$

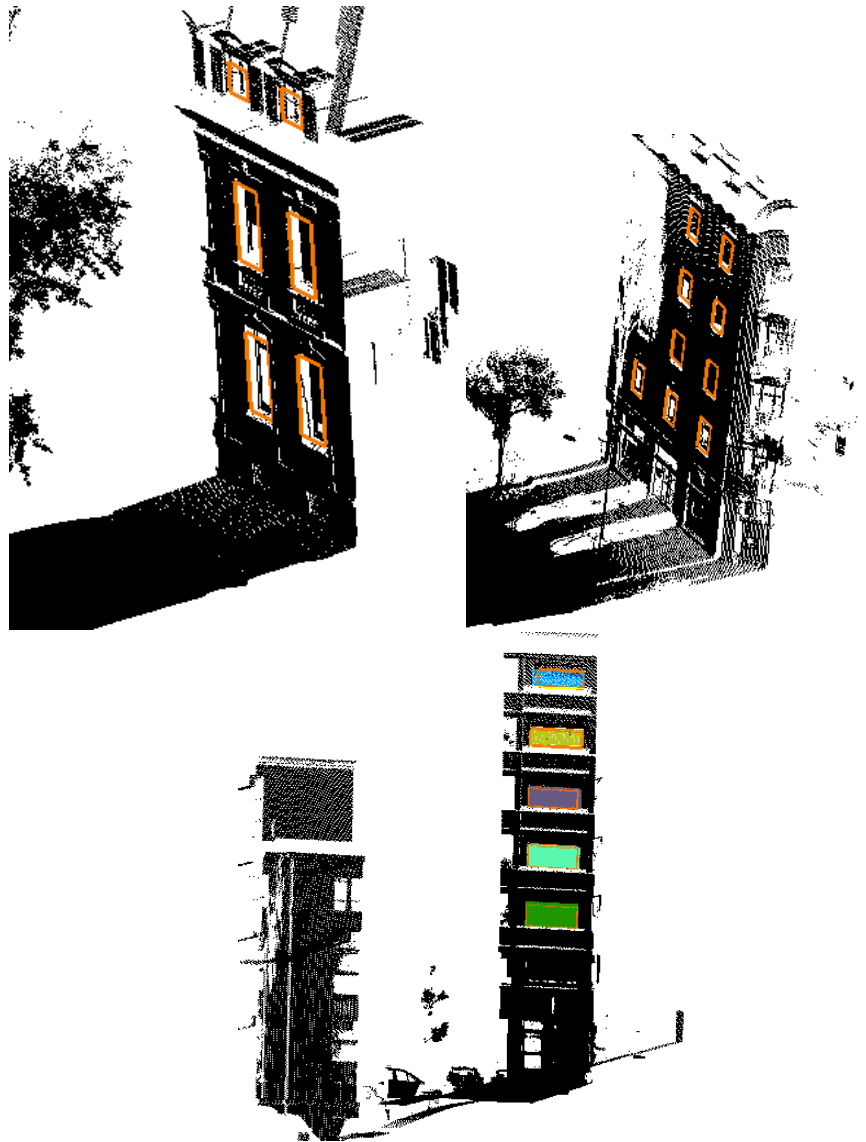


Figure 5. Openings detection results in in several outdoor scans.

3.2 RANSAC optimization

RANSAC has proven its robustness and efficiency as an optimization algorithm in several applications. In this part, we describe a new RANSAC based on two matching strategies. The first consists in matching the vertical planes representing the walls of the two scans whereas the second consists in matching the selected segments in the matched walls. The advantage of the integration of these two matching strategies is to simplify the selection of the two pairs of segments and optimize the calculation time of the algorithm by reducing the number of iterations. At each RANSAC iteration:

- We randomly select a wall plane from each scan.
- We randomly select one vertical segment and one horizontal segment in each selected wall plane.
- We associate the vertical segments and the horizontal segments between the two selected sets.
- We compute the transform (rotation and translation) that best aligns the matched 3D segments using the method of Section 3.3.

- For this transform, we estimate the global robust distance between all segments of the two sets using equation (14).

The final registration is given by the transformation that minimizes the global robust distance.

3.3 Transform estimation

Once two pairs of segments $\{v_i, v_j\}$ (vertical) and $\{h_i, h_j\}$ (horizontal) are associated, we estimate the rotation that best aligns the corresponding two 3D lines. Let us call d_v^i, d_v^j, d_h^i and d_h^j the unit director vectors of v_i, v_j, h_i and h_j . We start by creating orthonormal bases $\mathcal{O}^i = (\mathbf{x}^i, \mathbf{y}^i, \mathbf{z}^i)$, where:

$$\mathbf{x}^i = \mathbf{d}_v^i, \quad \mathbf{y}^i = \frac{\mathbf{d}_h^i - \mathbf{d}_h^i \cdot \mathbf{x}^i \mathbf{x}^i}{\|\mathbf{d}_h^i - \mathbf{d}_h^i \cdot \mathbf{x}^i \mathbf{x}^i\|}, \quad \mathbf{z}^i = \mathbf{x}^i \times \mathbf{y}^i \quad (15)$$

We then compute the rotation R that aligns the associated clusters as the base change matrix between \mathcal{O}^i and \mathcal{O}^j :

$$R = \mathcal{O}^j \mathcal{O}^{i-1} \quad (16)$$

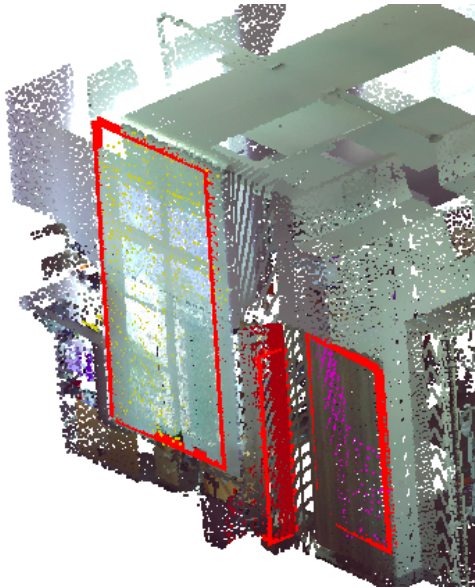


Figure 6. Openings detection in an indoor scan.

To estimate the translation, we start by defining the point to line distance:

$$dist(\mathbf{p}, L = \mathbf{a} + \mathbf{d}t) = \frac{\|\mathbf{d} \wedge (\mathbf{a} - \mathbf{p})\|}{\|\mathbf{d}\|} = [\mathbf{d}]_{\times}(\mathbf{a} - \mathbf{p}) \quad (17)$$

assuming that \mathbf{d} is normalized, and again calling $[\mathbf{d}]_{\times}$ the matrix of the cross product with \mathbf{d} . We look for the translation \mathbf{t} that minimizes:

$$\epsilon = \sum_i \|[\mathbf{d}]_{\times}(\mathbf{a}_i - (\mathbf{p}_i + \mathbf{t}))\|^2 \quad (18)$$

The minimum is reached when the gradient is null:

$$\nabla_{\mathbf{t}}\epsilon(\mathbf{t}) = -2 \sum_i [\mathbf{d}_i]_{\times}^t [\mathbf{d}_i]_{\times}(\mathbf{a}_i - (\mathbf{p}_i + \mathbf{t})) = 0 \quad (19)$$

Calling:

$$\mathbf{w} = \sum_i [\mathbf{d}_i]_{\times}^t [\mathbf{d}_i]_{\times}(\mathbf{p}_i - \mathbf{a}_i)$$

$$\mathbf{M} = - \sum_i [\mathbf{d}_i]_{\times}^t [\mathbf{d}_i]_{\times}$$

Such that:

$$[\mathbf{t}] = [\mathbf{M}]^{-1} [\mathbf{w}]$$

4. EVALUATION AND DISCUSSION

4.1 Openings detection

Our proposed method to detect openings can be applied for both indoor and outdoor scans regardless of the density of the 3D point cloud. The first evaluation was carried out on more than 50 outdoor scans, the obtained results have shown the robustness and accuracy of our framework as more than 98 % of the openings of each scan are detected as shown in Figures(4,5). Afterwards, we tested our approach on indoor scans where we have detected around 80 % of openings as shown in Figure 6. The performance of our algorithm is lower on interior scans due to the presence of curtains for most of the windows that prevent rays from traversing the wall plane from indoor to outdoor while it traverses the façade plane from outdoor to indoor. Compared to hole based methods, which cannot precisely extract window outlines in most cases, and binary image based

methods which require a lot of parameters like pixel size, our algorithm is very efficient to detect openings, whatever the acquisition platform (indoor static mode and outdoor mobile) and the point clouds density.

4.2 Indoor/Outdoor registration

The second part of our contribution consists in proposing an openings based registration algorithm to address the challenging problem of indoor/outdoor registration with a unified formalism. Our proposed algorithm works without any constraints on the initial position of the two scans, unlike iterative methods which require a good approximation of the initial transformation to be able to converge towards the correct solution. The key step of our algorithm is the detection of openings which was carried out using an automatic method applicable in indoor and outdoor data. The obtained results have proven the performance of our algorithm to register indoor/outdoor data whatever the initial position and orientation as shown in figures 7. The particularity of our algorithm lies in the effect that it matches the openings as a set of 3D segments. we defined a global robust distance between two segments sets and we proposed a robust approach to minimize this distance using RANSAC paradigm. The proposed method in Djahel et al. (2021) has some limitations which can be improved using our algorithm. If we have three pairs of polygons (with independent normals), we can recover a 6D (rotation+translation) transform between two scans. In some configurations, we are able to find only two degrees of freedom for the translation (this situation can happen if we match an indoor polygon which represents a small part of the ceiling with two outdoor polygons). Using our proposed algorithm, we can find the missing degree of freedom.

Implementation: Our algorithm was implemented in C++, using several software libraries:

- The CGAL library <https://www.cgal.org/>) to check if the intersection point of the LiDAR ray and the supporting planes of the facade inside the facade polygon.
- Eigen library <https://eigen.tuxfamily.org/dox/> for all matrix calculation.
- The Point Cloud Library (PCL) <https://pointclouds.org/> for point cloud processing.

5. CONCLUSION AND FUTURE WORK

In the present work, we have proposed a method based on openings detection and matching to address the challenging problem of indoor/outdoor registration. In the first part we proposed an automatic method to detect the openings in the LiDAR data whatever the acquisition mode and the density. In the second part we have proposed an efficient algorithm to register the indoor and outdoor scans using the detected openings as features. We register the openings detected from both inside and outside by minimizing a global robust distance between the corresponding segment sets and we proposed a robust approach to minimize this distance using the RANSAC paradigm. Our preliminary tests have exhibited the potential of the proposed methods (openings detection + openings based registration). We can propose some improvements in the future works:

- Allowing more flexible openings shape, for instance by extracting corner points for each connected component and connecting them using parametric B-spline curves.

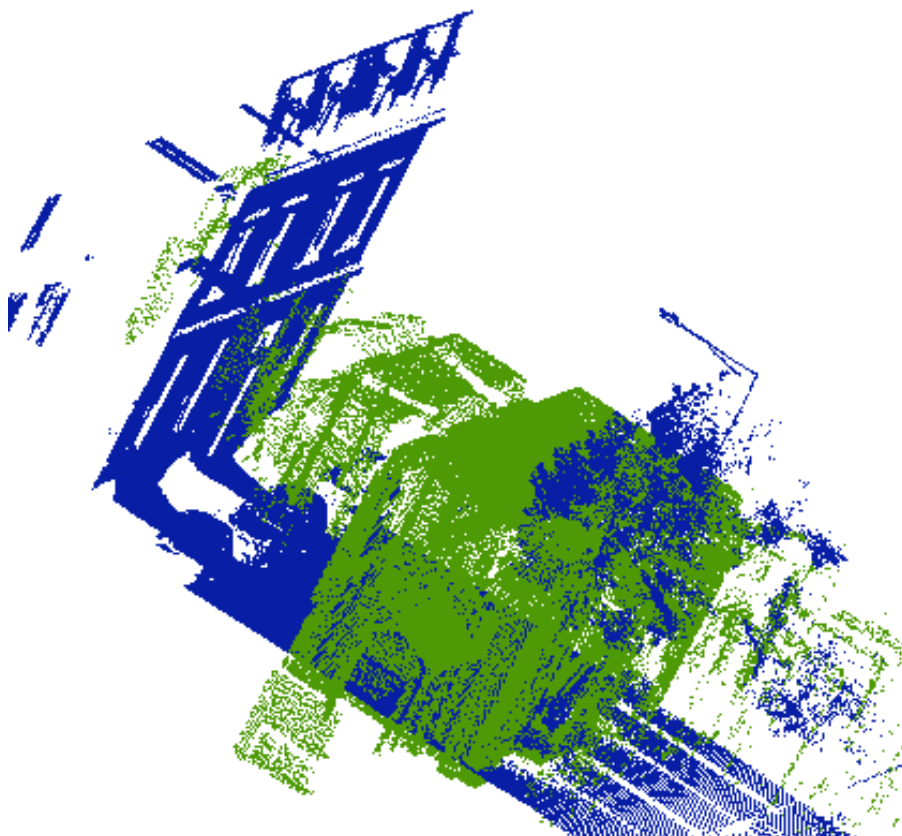
- Leveraging a semantic segmentation of the input point clouds to improve the accuracy and robustness of openings detection.

6. ACKNOWLEDGMENT

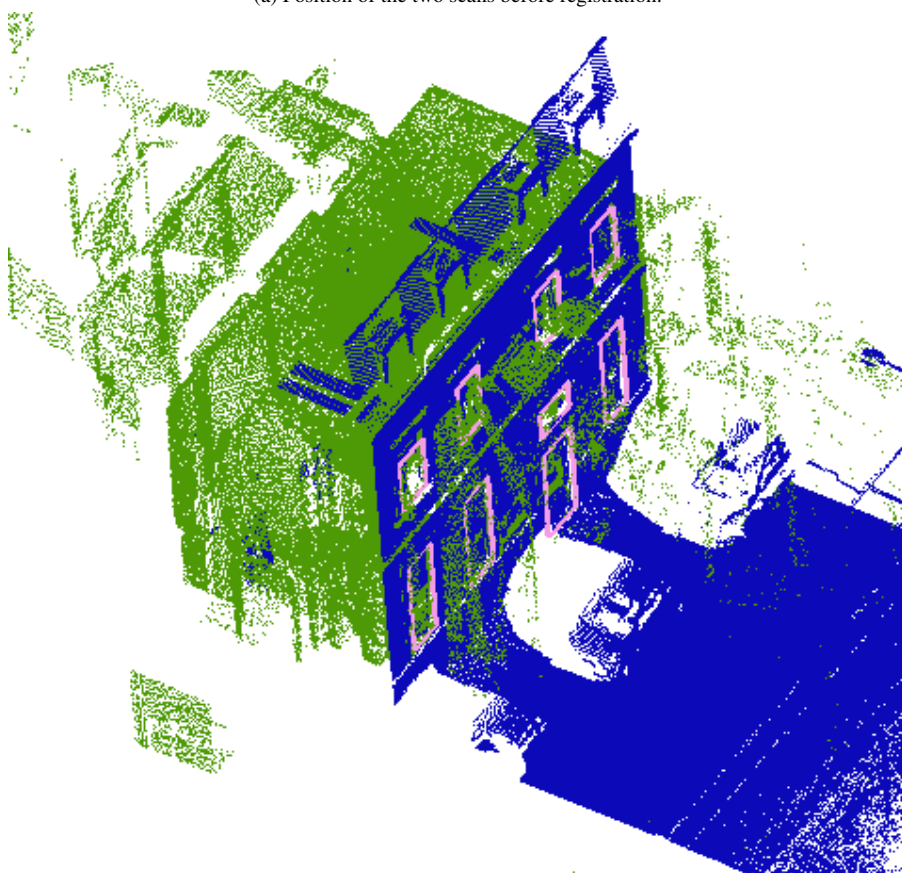
This work has been supported by the Building Indoor/Outdoor Modelling ANR-17-CE23-0003 BIOM project. The authors would like to thank Mrs. Tania LANDES who provided them with the indoor data.

REFERENCES

- Aijazi, A. K., Checchin, P., Trassoudaine, L., 2014. Automatic detection and feature estimation of windows for refining building facades in 3D urban point clouds. *ISPRS Annals of the Photogrammetry, Remote Sensing and Spatial Information Sciences*, 2(3), 1.
- Al-Durgham, K., Habib, A., Kwak, E., 2013. RANSAC approach for automated registration of terrestrial laser scans using linear features. *ISPRS Int. Arch. Photogramm. Remote Sens. Spat. Inf. Sci.*, 2, 13–18.
- Assi, R., Landes, T., Macher, H., Grussenmeyer, P., 2019a. Energy function algorithm for detection of openings in indoor point clouds. *International Archives of the Photogrammetry, Remote Sensing & Spatial Information Sciences*.
- Assi, R., Landes, T., Murtiyoso, A., Grussenmeyer, P., 2019b. Assessment of a keypoints detector for the registration of indoor and outdoor heritage point clouds. *International Archives of the Photogrammetry, Remote Sensing & Spatial Information Sciences*.
- Besl, P. J., McKay, N. D., 1992. Method for registration of 3-d shapes. *Sensor fusion IV: control paradigms and data structures*, 1611, International Society for Optics and Photonics, 586–606.
- Djahel, R., Vallet, B., Monasse, P., 2021. Towards Efficient Indoor/outdoor Registration Using Planar Polygons. *ISPRS Annals of the Photogrammetry, Remote Sensing and Spatial Information Sciences*, 2, 51–58.
- Dong, Z., Liang, F., Yang, B., Xu, Y., Zang, Y., Li, J., Wang, Y., Dai, W., Fan, H., Hyypä, J. et al., 2020. Registration of large-scale terrestrial laser scanner point clouds: A review and benchmark. *ISPRS Journal of Photogrammetry and Remote Sensing*, 163, 327–342.
- Dong, Z., Yang, B., Liang, F., Huang, R., Scherer, S., 2018. Hierarchical registration of unordered TLS point clouds based on data binary shape context descriptor. 144, 61–79.
- Grant, D., Bethel, J., Crawford, M., 2012. Point-to-plane registration of terrestrial laser scans. *ISPRS Journal of Photogrammetry and Remote Sensing*, 72, 16–26.
- Guinard, S. A., Mallé, Z., Ennafii, O., Monasse, P., Vallet, B., 2020. Planar Polygons Detection in LiDAR Scans Based on Sensor Topology Enhanced RANSAC. *ISPRS Annals of the Photogrammetry, Remote Sensing and Spatial Information Sciences*, 2, 343–350.
- Koch, T., Korner, M., Fraundorfer, F., 2016. Automatic alignment of indoor and outdoor building models using 3d line segments. *Proceedings of the IEEE Conference on Computer Vision and Pattern Recognition Workshops*, 10–18.
- Li, J., Xiong, B., Biljecki, F., Schrotter, G., 2018. A sliding window method for detecting corners of openings from terrestrial LiDAR data. *International Archives of the Photogrammetry, Remote Sensing and Spatial Information Sciences*, 42(4/W10), 97–103.
- Low, K.-L., 2004. Linear least-squares optimization for point-to-plane icp surface registration. *Chapel Hill, University of North Carolina*, 4(10), 1–3.
- Magnusson, M., Lilienthal, A., Duckett, T., 2007. Scan registration for autonomous mining vehicles using 3D-NDT. *Journal of Field Robotics*, 24(10), 803–827.
- Murtiyoso, A., Grussenmeyer, P., 2018. Comparison and assessment of 3d registration and georeferencing approaches of point clouds in the case of exterior and interior heritage building recording. *ISPRS TC II Mid-Term Symposium "Towards Photogrammetry 2020"*, 42, Copernicus Publications, 745–751.
- Nguatam, W., Drauschke, M., Mayer, H., 2014. Localization of windows and doors in 3D point clouds of facades. *ISPRS Annals of the Photogrammetry, Remote Sensing and Spatial Information Sciences*, 2(3), 87.
- Pu, S., Vosselman, G., 2007. Extracting windows from terrestrial laser scanning. *Intl Archives of Photogrammetry, Remote Sensing and Spatial Information Sciences*, 36, 12–14.
- Rabbani, T., Dijkman, S., van den Heuvel, F., Vosselman, G., 2007. An integrated approach for modelling and global registration of point clouds. *ISPRS journal of Photogrammetry and Remote Sensing*, 61(6), 355–370.
- Recky, M., Leberl, F., 2010. Window detection in complex facades. *2010 2nd European Workshop on Visual Information Processing (EUVIP)*, IEEE, 220–225.
- Tuttas, S., Stilla, U., 2011. Window detection in sparse point clouds using indoor points. *International Archives of Photogrammetry, Remote Sensing and Spatial Information Sciences*, 38(3).
- Wang, R., Bach, J., Ferrie, F. P., 2011. Window detection from mobile lidar data. *2011 IEEE Workshop on Applications of Computer Vision (WACV)*, IEEE, 58–65.



(a) Position of the two scans before registration.



(b) Position of the two scans after registration.

Figure 7. Indoor/Outdoor registration results (Green: indoor scan, Blue: outdoor scan, Pink: outline of outdoor openings).

© 2022. This work is published under
[https://creativecommons.org/licenses/by/4.0/\(the “License”\)](https://creativecommons.org/licenses/by/4.0/(the%20%22License%22)). Notwithstanding
the ProQuest Terms and Conditions, you may use this content in accordance
with the terms of the License.