

Microplastics in total atmospheric fallout: Monitoring in suburban and agricultural sites

Max Beaurepaire, Rachid Dris, Bruno Tassin,
Johnny Gasperi



laboratoire eau environnement systemes urbains



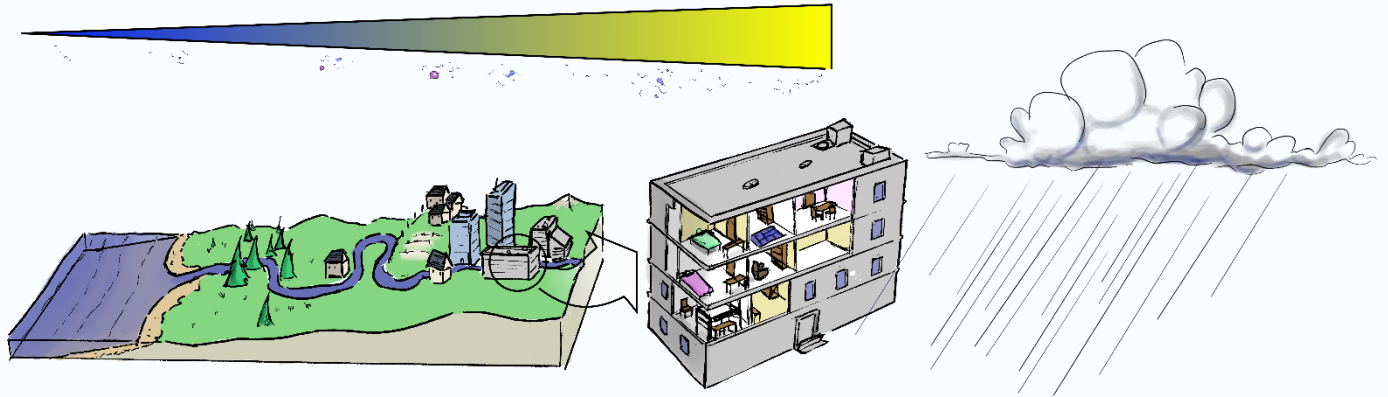
Université
Gustave
Eiffel

LABORATOIRE LEE
LABORATOIRE EAU
ET ENVIRONNEMENT



Context

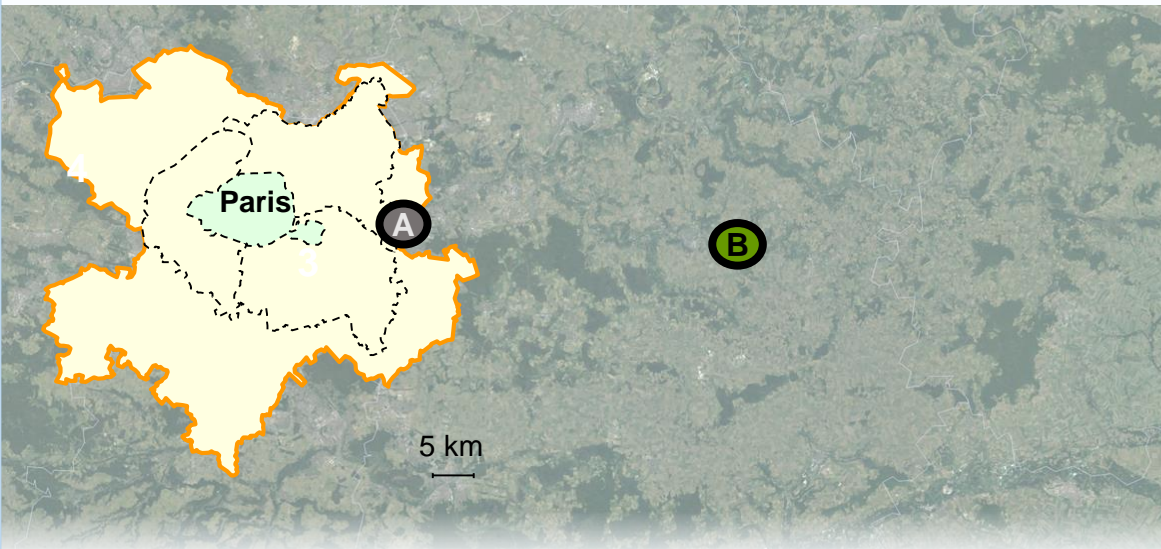
- Earlier studies suggest an effect of rain events in MP atmospheric deposition
- Human activity is suspected to affect MP deposition rates



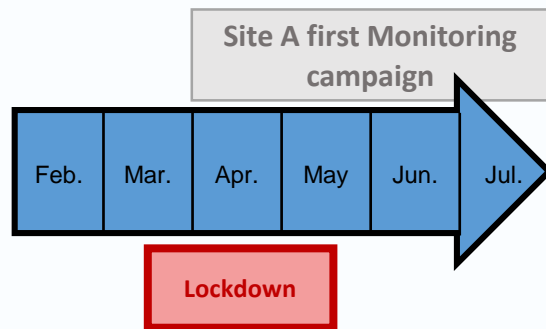
Objectives

- Conduct atmospheric fallout monitoring surveys on two sites
- Provide deposition rate measurements with updated analytic methods
- Compare these results with earlier studies

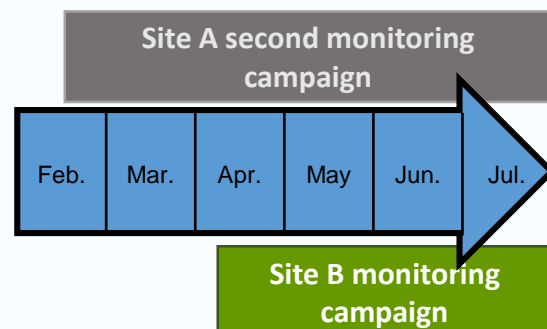
Three sampling campaigns on two sites



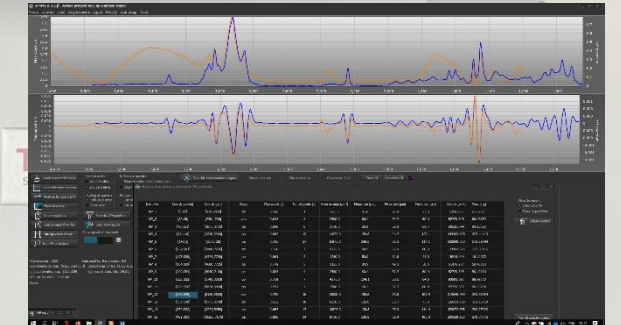
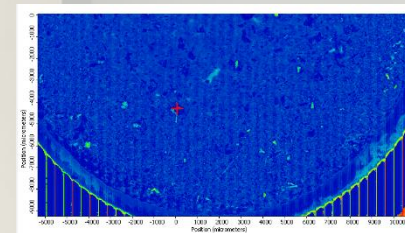
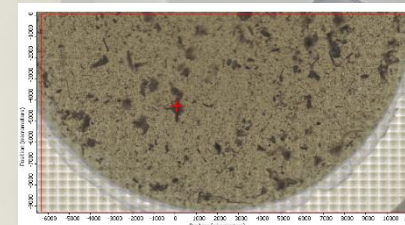
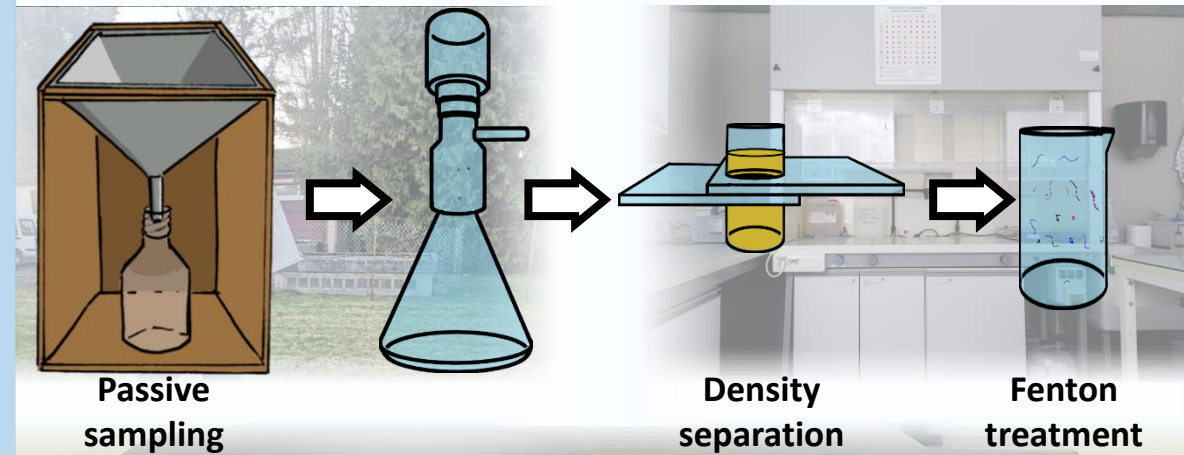
2020



2021



Passive sampling method and standardized treatment

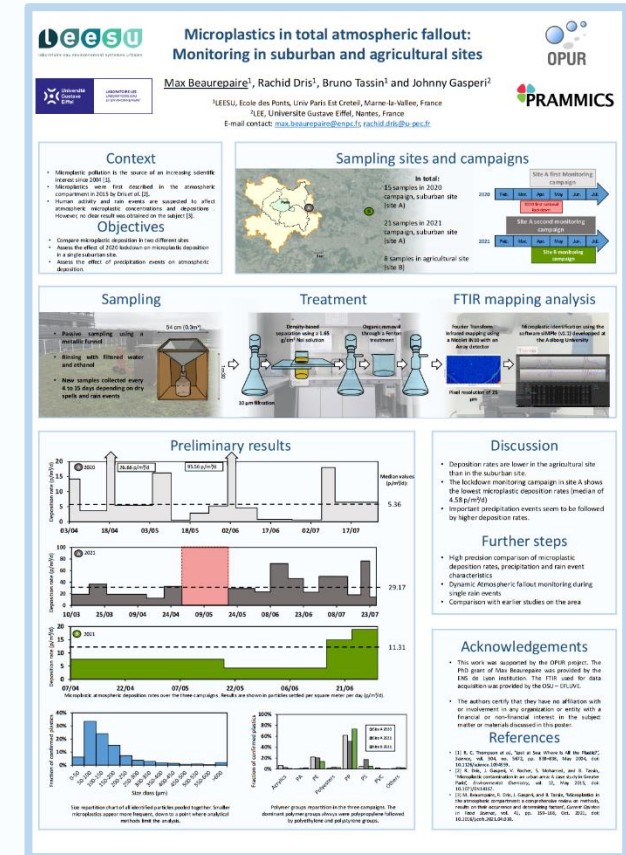


Micro-FTIR mapping analysis
Post-treatment with siMPLE

Results to discuss!

You may be wondering:

- What are the deposition rate differences between the suburban and agricultural site?
- Is there any observable deposition rate difference between 2020 and 2021?
- What types of polymers were found?
- What is their size repartition?
- What are we going to do now?



To get an answer to these questions:
come visit the **poster 66!**