



HAL
open science

Determination of 18 Biocides in Both the Dissolved and Particulate Fractions of Urban and Surface Waters by HPLC-MS/MS

Claudia Paijens, Bertrand Frere, Emilie Caupos, Régis Moilleron, Adèle Bressy

► **To cite this version:**

Claudia Paijens, Bertrand Frere, Emilie Caupos, Régis Moilleron, Adèle Bressy. Determination of 18 Biocides in Both the Dissolved and Particulate Fractions of Urban and Surface Waters by HPLC-MS/MS. *Water, Air, and Soil Pollution*, 2020, 231 (5), pp.210. 10.1007/s11270-020-04546-6. hal-02868245

HAL Id: hal-02868245

<https://enpc.hal.science/hal-02868245v1>

Submitted on 29 Jun 2020

HAL is a multi-disciplinary open access archive for the deposit and dissemination of scientific research documents, whether they are published or not. The documents may come from teaching and research institutions in France or abroad, or from public or private research centers.

L'archive ouverte pluridisciplinaire **HAL**, est destinée au dépôt et à la diffusion de documents scientifiques de niveau recherche, publiés ou non, émanant des établissements d'enseignement et de recherche français ou étrangers, des laboratoires publics ou privés.

Determination of 18 biocides in both the dissolved and particulate fractions of urban and surface waters by HPLC-MS/MS

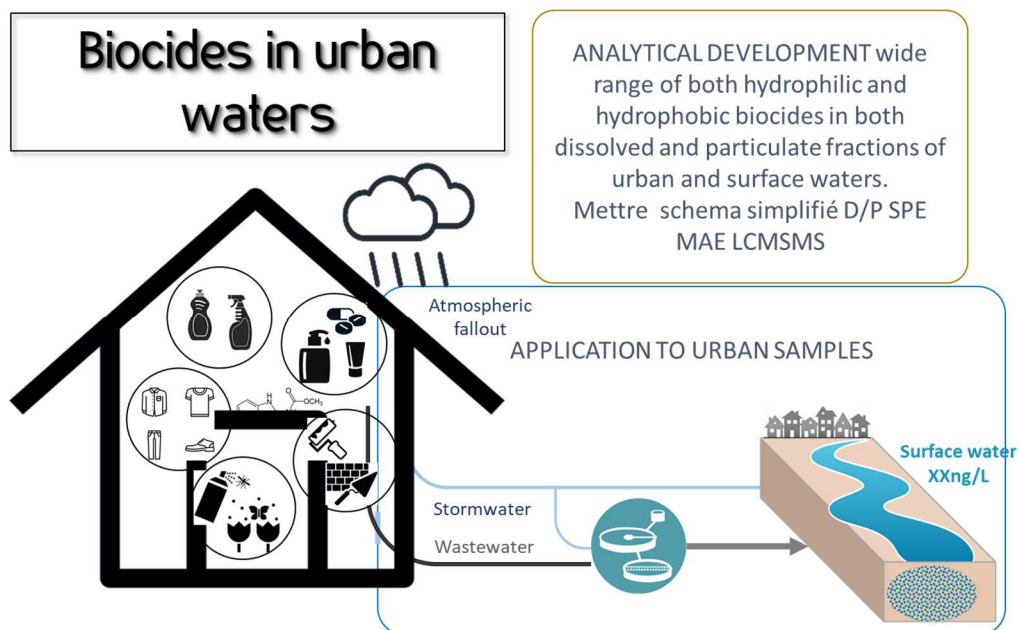
Claudia Paijens^{1,2}, Bertrand Frère², Emilie Caupos³, Régis Moilleron³, and Adèle Bressy^{1,*}

¹ Ecole des Ponts, Univ Paris Est Creteil, Leesu, Champs-sur-Marne, France

² Laboratoire Central de la Préfecture de Police, Paris, France

³ Univ Paris Est Creteil, Ecole des Ponts, Leesu, Creteil, France

*corresponding author: adele.bressy@enpc.fr



Abstract

A robust method is provided to analyze 18 hydrophilic and hydrophobic biocides in both dissolved and particulate fractions of five types of urban and surface waters using high performance liquid chromatography coupled to tandem mass spectrometry. The linearity, accuracy and intermediate precision were validated. The target biocides were enriched by solid phase extraction using Chromabond HR-X 200 mg cartridges and eluted with methanol, ethyl acetate and dichloromethane. Suspended matter was extracted by microwave-assisted extraction in methanol and dichloromethane. Recoveries and variability (respectively >75% and < 30% for most of the target biocides and matrices) made it possible to quantify biocides at trace level in all matrices. LOQs were in the range of ng/L in the dissolved fraction and in the range of ng/g.dw in the particulate fraction for most of the biocides and matrices and were generally lower than those reported in previous studies. The method was successfully applied to surface water, treated and untreated wastewater, combined sewer overflows, and stormwater providing, unique data in these matrices for some substances, in particular with respect to particle contamination. In urban waters, concentrations of most of the biocides ranged from 10 to 200 ng/L. Diuron, isothiazolinone and benzalkonium concentrations could reach 0.9, 0.9 and 20 µg/L respectively. In rivers, most of the biocides were measured at less than 10 ng/L, but higher concentrations were observed for benzalkoniums (up to 200 ng/L) or after rain events, which indicates biocide transfer from urban surfaces into the aquatic environment during wet weather.

Keywords

Biocides, dissolved and particulate fractions, SPE, microwave assisted extraction, urban waters, surface waters

Introduction

In recent years, biocidal substances in the aquatic environment have received an increasing attention because of (i) their many uses especially in urban areas (Bester et al. 2008; Bollmann et al. 2014b; Paijens et al. 2020; Wieck et al. 2018), (ii) their transfer into the aquatic environment via wastewater or stormwater discharges (Bollmann et al. 2014a; Burkhardt et al. 2011; Juksu et al. 2019; Wicke et al. 2015), and (iii) their negative effect on aquatic organisms (Mohr et al. 2008; Vermeirssen et al. 2018). Indeed, biocides are toxic and may cause long-term adverse effects to aquatic ecosystems even at low concentrations, such as endocrine disruption in zebrafish larvae (Jiang et al., 2015) or behavioural disturbance in zebrafish embryos (Andrade et al., 2016). The predicted no effect concentrations (PNEC) of these substances are in the range of ng/L: 1 ng/L for cybutryn (Burkhardt et al., 2011), 8 ng/L for dichloro-octylisothiazolinone (Burkhardt et al., 2009), and 40 ng/L for benzalkonium C12 (Uhl et al., 2005) for instance. This work focuses on 18 biocides, which were previously prioritized (Paijens et al. 2019) according to (i) their use in urban areas, and especially as preservatives in building materials such as paints, renders, wood or bitumen membranes, (ii) their emission into runoff and the receiving waters, and (iii) their risk for aquatic organisms: diuron, isoproturon, methylisothiazolinone (MIT), benzisothiazolinone (BIT), chloro-methylisothiazolinone (CMIT), octylisothiazolinone (OIT), dichloro-octylisothiazolinone (DCOIT), benzalkonium compounds (BZK C12-C16), terbutryn, cybutryn (irgarol 1051), terbutylazine, carbendazim, iodopropynyl butylcarbamate (IPBC), thiabendazole, tebuconazole and mecoprop. A state-of-the-art review (Paijens et al. 2020) identified many knowledge gaps, preventing the full assessment of the risks associated with biocides originating from buildings. Most of these biocides are also used as plant protection products and thus have been monitored in rural areas but more rarely in urban waters (Paijens et al. 2020). For other compounds not used as pesticides (isothiazolinones, benzalkonium compounds, IPBC), data in receiving and urban waters are scarcer (Paijens et al. 2020). A few studies have shown that these substances can be emitted at high concentrations in building runoff (Bollmann et al. 2016; Bollmann et al. 2017; Burkhardt et al. 2011, 2012; Van de Voorde et al. 2012). Runoff concentrations and cumulative emissions have been reported in Paijens et al. (2020). For example, diuron was measured between 1 and 25 mg/L (Burkhardt et al. 2012; Bollmann et al. 2016) and benzalkonium compounds between 0.04 and 27 mg/L (Van de Voorde et al. 2012). However, their transfer to the aquatic environment and the contribution of building materials to the contamination of receiving waters by biocides have been little studied (Paijens et al. 2020). Although these substances are also used in domestic products such as detergents, cosmetics, and textiles or as insecticides (Bester et al. 2008; Wieck et al. 2016), their urban sources have been overlooked in terms of health and environmental risk assessment (Merel et al. 2018; Paijens et al. 2020; Wieck et al. 2016). So far, biocides are still poorly regulated in the aquatic environment, and are therefore not included in monitoring programs (Dulio et al. 2015; Geissen et al. 2015). It is therefore important to address the lack of knowledge about their dynamics in urban waters and to prioritize emission pathways into the aquatic media.

Several multi-residue analytical procedures have been reported in the literature for the determination of biocides and pesticides (Bester and Lamani 2010; Chen et al. 2012; Cotton et al. 2016; Moschet et al. 2014; Singer et al. 2010; Van de Voorde et al. 2012; Wick et al. 2010; Wieck et al. 2018). However only Wieck et al. (2018) have considered hydrophilic and cationic/hydrophobic biocides, such as isothiazolinones (excepting MIT) and benzalkonium compounds (only BZK C12). These methods are based on high performance liquid chromatography coupled to tandem mass spectrometry (HPLC-MS/MS). Most of the currently available methods for dissolved extraction are based on solid phase extraction (SPE). Polymeric phases such as divinylbenzene (Hydrophobic DVB, Baker), polystyrene-divinylbenzene (Strata-X from Phenomenex or Chromabond HR-X from Macherey-Nagel) or vinylpyrrolidinone-divinylbenzene (Oasis HLB, Waters), are widely used for all the selected compounds, as they provide mixed retention (Bester and Lamani 2010; Chen et al. 2012; Singer et al. 2010; Wieck et al. 2018). Benzalkonium cations can be extracted using a cationic exchange phase (Van de Voorde et al. 2012). Cartridges that combine several phases are also used for multi-residue analysis (Moschet et al. 2014; Rafter et al. 2007). Concerning the particulate fraction, most studies focus on soils (Chitescu et al. 2012; Hildebrandt et al. 2007; Huang et al. 2018; Shah et al. 2011; Stipičević et al. 2015) or sediments (Kalogridi et al. 2014; Masiá et al. 2015; Sánchez-Rodríguez et al. 2011) and only on a limited number of compounds. To the best of the authors' knowledge, only three studies have investigated and therefore pointed out the contamination of suspended matter by biocides (Östman et al. 2017; Van de Voorde et al. 2012; Wieck et al. 2018). Benzalkoniums were measured in stormwater and wastewater particles by Van de Voorde et al. (2012) and Östman et al. (2017) using microwave assisted extraction (MAE) or bead beater with zirconium/silica beads, and 14 biocides were analyzed by Wieck et al. (2018) using ultrasounds.

The aim of this study was to develop a sensitive and robust method for the quantification of the 18 targeted biocides in both dissolved and particulate fractions of a wide range of matrices: rainwater, stormwater, combined sewer overflows (CSOs), treated and untreated wastewater, and surface waters. The first objective was to optimize a suitable method for a wide range of matrices and concentrations, with detection and quantification limits in surface

waters below predicted no effect concentrations (PNECs) in order to assess the environmental risk. The second objective was to apply the validated method to real samples in order to assess the contamination of urban waters and the respective contribution of dry and wet weather water discharges to the pollution of the receiving aquatic environment.

1. Materials and methods

1.1. Chemicals and reagents

Information about the 18 targeted compounds are listed in the electronic supplementary material (ESM) Table S1. All standards of high purity (> 90%) were commercially available. Carbendazim, IPBC, tebuconazole, terbuthryn, thiabendazole, 2-methyl-4-isothiazolin-3-one, 4,5-dichloro-2-n-octylisothiazol-3(2H)-one and 5-chloro-2-methyl-4-isothiazolin-3-one were purchased from A2S (France). Cybutryn, isoproturon, mecoprop, terbuthylazine, 1,2-benzisothiazol-3(2H)-one, 2-octylisothiazol-3(2H)-one and the isotope labelled standard isoproturon-d6 was obtained from Dr. Ehrenstorfer (Germany). Three benzalkonium chlorides (benzyltrimethyldecyl ammonium chloride C12, benzyltrimethyltetradecyl ammonium chloride C14, and benzyltrimethylhexadecyl ammonium chloride C16) were purchased from Sigma Aldrich (France). The isotope-labelled standards terbuthylazine-d5 and mecoprop-d3 were obtained from CDN Isotopes (Canada).

HPLC-grade methanol (MeOH), dichloromethane (DCM), ethyl acetate (EtAc) and formic acid (HCOOH) were purchased from ThermoFisher Scientific (France). Deionized water was produced by an Elix Essential 3 system and ultrapure (UP) water was produced by Milli-Q IQ 7000 system, both from Merck Millipore (France).

Individual stock solutions of all compounds were prepared in MeOH at 1 mg/mL except for MIT (20 mg/mL), terbuthylazine (0.25 mg/mL), carbendazim (in acetone at 0.1 mg/mL), and terbuthylazine-d5 (in acetone at 1 mg/mL). Standard mixture solutions were prepared in MeOH at 5 mg/L, 50 µg/L and 10 µg/L. Internal standard (IS) mixture solution (isoproturon-d6, mecoprop-d3 and terbuthylazine-d5) was prepared in MeOH at 10 mg/L. All solutions were stored in 15 mL amber glass bottles and kept at 4 °C.

1.2. Sample collection and preparation

1.2.1. Sample collection

Surface water samples were collected upstream of the Paris conurbation in the Marne River, in the middle of the channel and at around one meter deep (5 L grab sample). Dry and wet atmospheric depositions were collected using an amber glass bottle (20 L) connected to a 1 m² stainless pyramidal funnel located on the roof of the Central Laboratory of the Police Prefecture. Wastewater treatment plant (WWTP) influents and effluents were collected from the Seine centre WWTP (24 h composite samples). CSOs samples (mix of wastewater and stormwater) were collected in Paris (flow-dependent samples). Stormwater was sampled in an underground stormwater storage pond in Paris (time-dependent samples).

1.2.2. Preparation of samples

In order to remove any traces of organic impurities, all glassware was successively hand-washed with detergent (24 h), rinsed with tap water and deionized water, and heated at 500 °C for 2 h. Samples were filtered within 24 h after sampling through 0.7 µm glass fiber filters (GF/F, Whatman, UK) previously heated at 500 °C for 2 h. In order to obtain enough particles, 250 mL of CSO sample, 300 mL of stormwater, 400 mL of wastewater, 1 L of WWTP effluents, and 2 L of surface waters and rainwater were filtered. The dissolved fraction was stored in a glass bottle at 4 °C and extracted within 48 h after sampling. Before extraction, the sample pH was adjusted to 2.5 with 0.1% (v/v) of HCOOH (98-100%). The GF/F filter containing the particulate fraction was frozen and then freeze-dried for 24 h. The filter was then stored in a desiccator until its extraction.

1.3. Sample extraction

1.3.1. Dissolved fraction

The dissolved fraction was extracted by SPE on a semi-automatic device, AutoTrace (AT280) from Caliper Life Sciences (France). The protocol is summarized in ESM Table S2. Samples were extracted on a Chromabond HR-X cartridge (200 mg, 6 mL) from Macherey-Nagel (France). First, the cartridge was successively conditioned with 5 mL of DCM, 10 mL of EtAc, 10 mL of MeOH, and 10 mL of acidified UP water (pH 2.5). The sample was then

loaded onto the cartridge: 100 mL for CSOs and wastewater, 200 mL for treated wastewater and stormwater, and 500 mL for surface waters and rainwater. After loading, the cartridge was washed with 2 mL of acidified UP water and dried under nitrogen flow. The compounds were then successively eluted with 6 mL of MeOH, 3 mL of EtAc, and 2 mL of DCM. The extract was collected in a 15 mL amber glass bottle and stored at -8 °C prior to analysis. Before injection, the solvents were evaporated under a nitrogen flow up to 500 μ L, corresponding to the volume of acidified UP water added before evaporation. The extract was then completed to 1 mL with the mobile phase in order to obtain 80% acidified UP water and 20% acidified MeOH in the final extract. Lastly, the extract was filtered through a 0.2 μ m syringe filter and 5 μ L of injection IS solution were added.

1.3.2. Particulate fraction

Particles were extracted using a closed glassware Multiwave 3000 microwave from Anton Paar (France). The protocol is described in ESM Table S3. First, the filter containing the particles was cut into small pieces and introduced into a PTFE tube. The sample was then extracted by microwaves and using 20 mL of MeOH/DCM (60/40, v/v). The temperature program was set as follows: rise in temperature up to 100 °C for 5 min, then temperature kept at 100 °C for 10 min, and cooling. The extract was then filtered through a pleated filter previously dampened with 4 mL of extraction solvent and collected in a flat-bottom flask. After filtration, the filter was rinsed with 4 mL of extraction solvent in order to avoid any losses. The sample was then extracted a second time with the same protocol and both extracts were combined. The solvent was then pre-evaporated with a Rotavapor from Büchi (France) to 4 mL. The final volume was transferred to a 15 mL amber glass bottle and the flat-bottom flask was rinsed with 2 mL of solvent. The extract was stored at -8 °C and was prepared for injection in the same way as SPE extracts.

1.4. Analysis by HPLC-MS/MS

After extraction, the analysis was conducted by Ultra Performance Liquid Chromatography (Waters Acquity®) coupled with triple quadrupole mass spectrometry (Waters TQD®). Chromatographic separation was performed on a 100 x 2.1 mm i.d. (1.7 μ m) Acquity UPLC® HSS T3 column with its corresponding VanGuard™ pre-column (5 x 2.1 mm, 1.7 μ m) from Waters. The flow rate was set at 0.4 mL/min and the column temperature maintained at 40 °C. The injection volume was 10 μ L. The mobile phase contained (A) MeOH acidified with HCOOH (0.1% in volume) and (B) UP water acidified with HCOOH (0.1% in volume). The gradient program was: 5% B at 0 min and held for 2 min, increased to 20% B at 2 min, increased to 100% B in 17 min and held for 10 min, decreased to 5% B in 1 min and held for 5 min for column equilibration before the next injection.

Ionization was performed with an ESI source in positive mode for all targeted biocides except for mecoprop, which is only ionized in negative mode. The acquisition was achieved in multiple reaction monitoring. The MS parameters are reported in ESM Table S4. For all biocides, precursor ions were the protonated or deprotonated molecular ion. Compound identification was based on the retention time (RT; \pm 0.05 s) and the selected two MS/MS transitions serving as quantifier (the most intense) and qualifier. Information relating to mass transitions, which were optimized by direct infusion, is reported in Table 1. The chromatograms obtained are shown in ESM (Fig. S1, Fig. S2 and Fig. S3).

1.5. Quantification, quality control and method validation

1.5.1. Quantification and quality control

Three isotopically-labelled IS were used to quantify the targeted compounds in order to compensate for any matrix effects or experimental issues. They were added before injection. Mecoprop-d3 was used for the quantification of mecoprop, which is the only compound ionized in negative mode. Other biocides were distributed between the two other internal standards in order to obtain the best linearity. Isoproturon-d6 was used for the quantification of BIT, diuron, IPBC, isoproturon and OIT. Terbutylazine-d5 was used for the quantification of benzalkonium compounds (C12-C16) carbendazim, CMIT, DCOIT, cybutryn, MIT, tebuconazole, terbutylazine, terbutryn, thiabendazole. Calibration curves were obtained from spiked standards in mobile phase (A/B, 80/20, v/v) at 0.05, 0.1, 0.25, 0.5, 0.75, 1, 2.5, 5, 10, 25, 75, 150, 250 μ g/L and 5 μ L of the internal standard solution was added (final concentration of 50 μ g/L). The calibration curves were produced by calculating the ratio between each standard area and its corresponding IS area, using quantification transitions. Blanks were injected every 5-6 samples and a 10 μ g/L-control was injected at the beginning of the analytical sequence, at mid-sequence and at the end.

Table 1 Retention times and information relating to mass transitions for the 18-targeted biocides and the three IS

Biocides	Retention time (min)	Optimal voltages		Precursor ion	Quantification		Confirmation	
		Capillary (kV)	Cone (V)	m/z	m/z	CE (eV)	m/z	CE (eV)
MIT	2.12	2.5	44	115.98	100.91	22	58.02	20
Carbendazim	4.36	0.6	32	192.09	160.05	18	132.04	30
CMIT	4.75	0.5	40	149.97	115.96	20	57.9	24
Thiabendazole	4.99	0.4	45	202.02	175.05	24	131.01	32
BIT	5.98	2.5	48	152	108.88	21	104.94	22
IPBC	10.44	0.6	28	281.94	164.81	20	56.98	10
Isoproturon	10.67	3.5	32	207.17	71.96	18	165.06	16
Diuron	10.78	3.5	38	233.05	71.97	24	46.03	16
Terbutryn	10.82	0.7	38	242.13	186.04	18	90.93	26
Cybutryn	11.41	0.4	38	254.15	198.07	18	82.97	30
Terbuthylazine	12.08	0.5	28	230.15	174.06	16	96.01	28
Mecoprop	12.11	2.4	28	212.99	140.92	12	70.93	14
OIT	12.94	0.6	32	214.09	101.38	14	56.98	18
Benzalkonium C12	13.6	0.5	55	304.34	90.99	28	212.3	22
Tebuconazole	13.8	0.7	36	308.18	69.94	2	124.99	32
Benzalkonium C14	14.8	0.5	40	332.36	90.95	30	240.3	22
DCOIT	15.53	0.6	32	282.89	169.89	14	57.04	18
Benzalkonium C16	15.76	0.5	48	360.39	90.95	30	268.28	24
Isoproturon-d6	10.63	0.6	32	213.18	77.99	18	51.99	18
Terbuthylazine-d5	12.05	0.5	36	235.13	179	18	100.99	29
Mecoprop-d3	12.08	2.2	30	216.09	143.89	14	70.86	18

1.5.2. Determination of HPLC-MS/MS performances

System repeatability was evaluated from seven replicate injections of solutions at 10 µg/L and 75 µg/L containing all selected biocides. Relative standard deviations (RSD) were calculated for both concentrations. To evaluate the linearity and the intermediate precision of the HPLC-MS/MS method, the calibration curve was repeated five times by changing at least one parameter (day of analysis, preparation of the solutions or mobile phase). Linearity was validated in accordance with the French norm “NF T-90-210”: for each point of the curve, the concentration was re-calculated by using the peak area and that of its corresponding IS. The linearity was validated if the error between the value calculated and the corresponding theoretical value was below 20%. Instrumental limit of detection (LOD_i) was determined as the lowest concentration for which both quantification and confirmation transitions were detected. LOQ_i was defined as the concentration from which the analytical method gives a guarantee that RSD was below a targeted value, between 10% and 35% depending on the compound (Mompelat et al. 2015; Slimani et al. 2017; Vial et al. 2003).

1.5.3. Determination of recoveries, LOD and LOQ in the dissolved fraction

To validate the overall method, including extraction step, samples were spiked at least three times at three different concentrations (given in the Table S5 in ESM) with the standard mixture solutions. Relative recoveries were determined using the ratio between the measured concentration in the extract (concentration in spiked sample – concentration in sample without spiking) and the theoretical value. To determine biocide concentrations in real

samples, each measured concentration was corrected by the recovery in the corresponding matrix. LOD_D was calculated in accordance with equation 1. Similarly, LOQ_D was calculated using LOQ_i .

$$LOD_D = \frac{LOD_i}{V_S} \times \frac{100}{R} \times V_E$$

Equation 1 Calculation of the LOD in the dissolved fraction, where LOD_i is the instrumental LOD (ng/L), V_S the sample volume (mL), R the recovery (%) and V_E the final volume of the extract (always 1 mL)

1.5.4. Determination of recoveries, LOD and LOQ in the particulate fraction

Regarding the particulate fraction, the spiking method is not appropriate. Spiking compounds are more easily mobilized than those absorbed into particles in real samples (Miege et al. 2003). Also, no certified samples are available. Thus, in most studies, standards are added to the extraction solvent and are not linked to particles. In this case, the recoveries obtained may not be representative. On the basis of Geara-Matta's (2012) validation method and in order to take into account substance-particle interactions, six wastewater samples (matrix containing the most suspended solids, SS) were successively extracted four times and each fraction was separately analyzed. Recoveries of the first two fractions (F1 + F2) were calculated with respect to the total quantity extracted in the four fractions. LOD_P was calculated in accordance with equation 2. Similarly, LOQ_P were calculated using to LOQ_i .

$$LOD_P = \frac{LOD_i}{m_{SS}} \times \frac{100}{R} \times V_E$$

Equation 2 Calculation of the LOD in the particulate fraction, where LOD_i is the instrumental LOD in (ng/g.dw dry weight), m_{SS} the quantity of suspended solid (g), R the recovery (%) and V_E the final volume of the extract (always 1 mL)

1.5.5. Determination of matrix effects

Matrix effects were determined for the three IS in all samples by comparing peak areas in mobile phase (A_{MP}) and in the extracts (A_E) in accordance with equation 3. For both, 5 μ L of a 10 mg/L solution of IS were added to 1 mL of mobile phase (acidified UP water/acidified MeOH, 80/20) or to the 1 mL extract.

$$\text{Matrix effect (\%)} = \left(\frac{A_E}{A_{MP}} - 1 \right) \times 100$$

Equation 3 Calculation of matrix effects where A_{MP} is the area of the IS in the mobile phase and A_E the area of the IS in the extract

2. Results and discussion

2.1. Method development

2.1.1. UPLC-MS/MS optimization

Two columns were compared: (i) 100 x 2.1 mm i.d. (1.7 μ m) Acquity UPLC® BEH C18, selected for its highly apolar nature, and (ii) 100 x 2.1 mm i.d. (1.7 μ m) Acquity UPLC® HSS T3, selected for its mixed retentive properties, both from Waters. The HSS T3 column was finally chosen for the following reasons: (i) it allows slightly better retention of the most polar compound MIT (RT of 2.13 min) compared with the BEH C18 column (RT of 1.49 min); (ii) the RT of the last compounds, BZK C16, is almost 5 min lower, which reduces the analysis time; (iii) for compounds with close RT, a slightly better separation is observed on the HSS T3 column (ESM Fig. S4).

The operating conditions for MS (capillary and cone voltages, collision energy, acquisition time and product ions) were optimized for each compound to maximize the response. They are reported in Table 1.

2.1.2. Optimization of SPE

Two different SPE cartridges were tested: Chromabond HR-X (6 mL, 200 mg, Macherey-Nagel), which is made of a divinylbenzene-polystyrene copolymer and with a specific surface area of 1000 m²/g (Wieck et al. 2018), and

Oasis HLB (6 mL, 200 mg, Waters), which is made of a divinylbenzene-vinyl pyrrolidinone copolymer and with a specific surface area of 810 m²/g (Chen et al. 2012; Cotton et al. 2016; Wick et al. 2010). UP water (100 mL) was spiked at 100 ng/L and loaded on both cartridges. Six replicates were extracted following the protocol reported in ESM Table S2. Recoveries and RSDs were compared (Fig. 1) and statistical tests were performed according to the scheme given in ESM Fig. S5. Fig. 1 shows recoveries between 70% and 90% on both cartridges for most of the biocides, with RSD between 1% and 15%, but a few issues were observed. Lower recoveries were obtained for MIT, which is a small hydrophilic molecule. It is therefore eluted by the sample water. A more hydrophilic stationary phase or a cartridge with a higher specific surface area and phase quantity would have been more appropriate for MIT but not suitable for hydrophobic compounds such as benzalkoniums. Bester and Lamani (2010) reported very low recoveries for MIT (5%) in tap water with a similar cartridge (Hydrophobic DVB, Baker) for similar reasons. Lower recoveries were also obtained for benzalkonium cations. These compounds have long carbon chains and might remain sorbed on the cartridge or on the analytical system. A cationic exchange cartridge such as Strata-X® CW (Phenomenex) would have been more appropriate (Van de Voorde et al. 2012) but not suitable for the other targeted biocides. ESM Table S6 reports the results of the statistical tests. Recoveries were significantly higher with the Chromabond HR-X cartridge for CMIT, MIT, cybutryn, terbuthylazine, thiabendazole and BZK C14, probably because of a higher specific surface area. Also, variability slightly decreased with this cartridge (RSDs from 1% to 53%) compared with the Oasis HLB cartridge (RSD from 5% to 97%), especially for benzalkonium compounds. Therefore, the Chromabond HR-X cartridge was chosen.

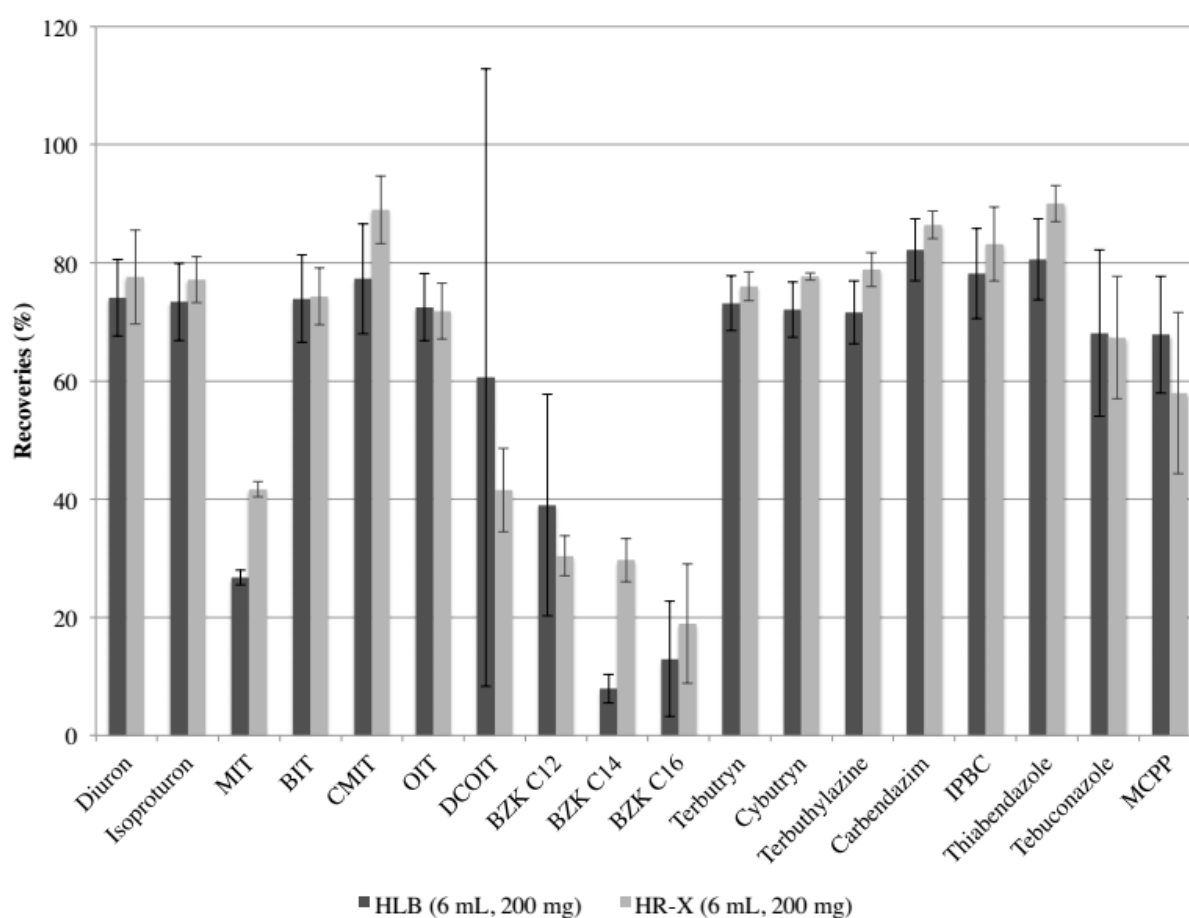


Fig. 1 Recoveries of the targeted biocides on the two tested SPE cartridges (mean ± standard deviation)

To determine whether DCM was necessary for the elution, and thus to reduce solvent consumption, three spiked solutions of UP water (100 mL at 100 ng/L) were extracted following the protocol reported in Table S3, except for the elution. Compounds were eluted with (i) 6 mL of MeOH, 3 mL of EtAc, and 2 mL of DCM or (ii) 6 mL of MeOH and 3 mL of EtAc. For most of the biocides, elution without DCM led to slightly higher recoveries but they remained similar (ESM Fig. S6): less than 5% of difference was observed for most of the biocides. Higher differences were obtained for DCOIT (recovery of 42% with DCM vs. 68% without) and tebuconazole (recovery of 64% with DCM vs. 79% without). However, a higher variability was observed for DCOIT and mecoprop without DCM (RSD of 47% and 33% respectively) compared with the elution with DCM (RSD of 17% and 8%

respectively). A 10-20% increase in recoveries was obtained with DCM for BIT, CMIT, BZK C14 and C16. Consequently, DCM was kept as the third elution solvent.

2.1.3. Optimization of MAE

To optimize the MAE procedure, virgin glass fiber filters were spiked with 200 μL of a solution containing all the targeted biocides at 50 $\mu\text{g/L}$ (10 ng on the filter, ESM Fig. S7) and extracted according to the protocol described in ESM Table S3 by varying some parameters. Four different extraction temperatures were tested: 60 $^{\circ}\text{C}$, 80 $^{\circ}\text{C}$, 100 $^{\circ}\text{C}$ and 120 $^{\circ}\text{C}$. Three replicates were extracted for each temperature. Recoveries (with respect to the spiked values) at different temperatures are reported in Fig. 2. For most of the biocides, the optimal extraction temperature was 100 $^{\circ}\text{C}$: recoveries were between 60% and 90% and RSDs were below 20%. However, low recoveries (from undetected to 40%) were obtained for benzalkonium compounds and IPBC. Thus, a longer temperature plateau and another extraction solvent were tested.

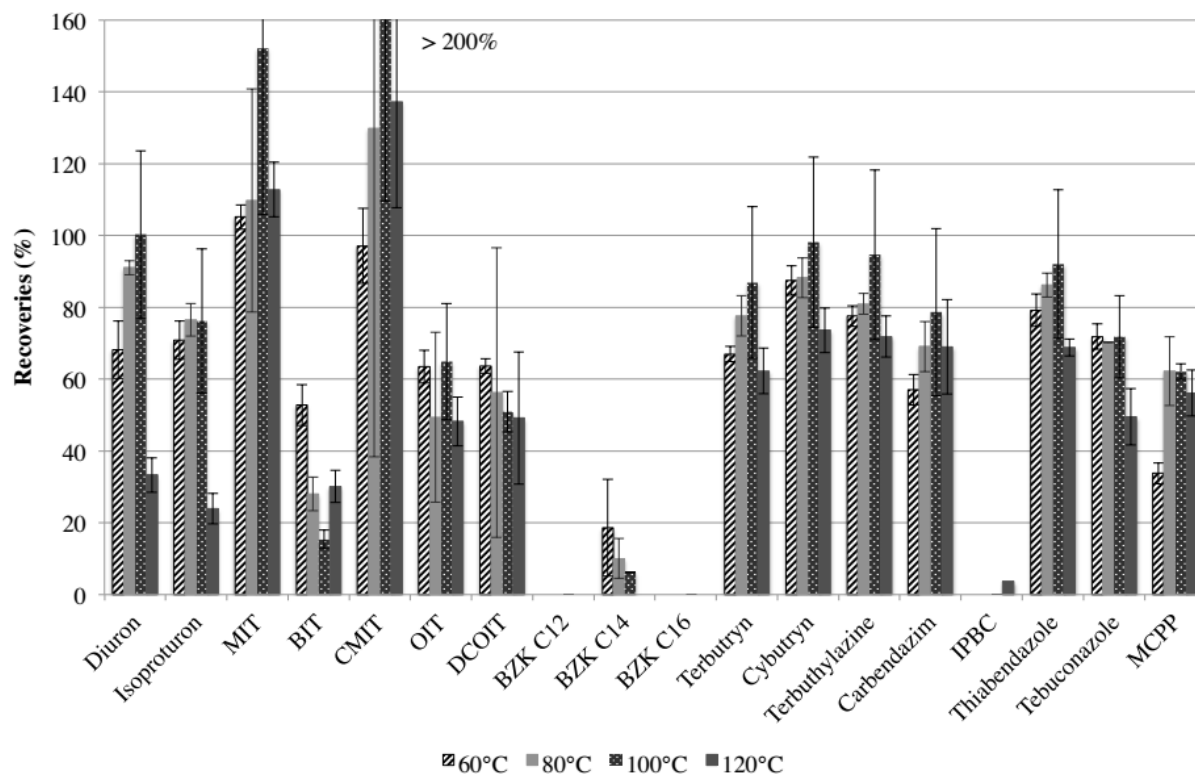


Fig. 2 MAE recovery rates at four different temperatures (mean \pm standard deviation)

Three replicates were extracted with a longer temperature plateau (15 min instead of 10 min). For most of the biocides, recoveries were similar (less than 10% of difference) or higher with a shorter extraction time (ESM Fig. S8). Unfortunately, benzalkonium cations remained undetected in the extracts. The shortest temperature plateau of 10 min was thus kept.

Two different solvents were then tested: MeOH/DCM (60/40; v/v) and MeOH + 0.1% HCOOH (v/v) in order to increase benzalkonium recoveries. Three replicates were extracted and recoveries are shown in ESM Fig. S9. Except for DCOIT, slightly lower recoveries were obtained with acidified MeOH (less than 20% lower) and no difference was observed for benzalkonium compounds, which remained undetected. Similar RSDs were observed with MeOH/DCM (1 - 24%) mixture or acidified MeOH (2 - 30%). Thus, MeOH/DCM (60/40; v/v) was kept as extraction solvent.

Although some optimizations were performed, benzalkonium compounds and IPBC remained undetected in the extracts although filters had been spiked. This problem may come from the spiking step. Indeed, the filter was placed in a Petri dish (PTFE) in order to be spiked with 200 μL of a solution containing all the targeted biocides (50 $\mu\text{g/L}$ in MeOH). It was assumed that benzalkonium compounds and IPBC tend to adsorb on the Petri dish instead of the glass fiber filter, which could explain their very low recoveries in all extracts. Consequently, the method was not validated with spiked samples as explained in the materials and methods section, paragraph 1.5.4.

2.2. Method validation

2.2.1. UPLC-MS/MS

Analytical blanks were analyzed in order to check the absence of any contamination during the analysis. Benzalkonium cations were detected in all analytical blanks. These compounds have long carbon chains and develop strong interactions with the column stationary phase. In order to remove this contamination, the column was rinsed with isopropanol, which has greater elution power for these compounds, for a couple of hours, but to no avail. Hence, only higher concentrations than those measured in blanks were considered. A few studies have reported this contamination, which may come, for example, from the mobile phase, but did not provide any solutions (Friedle et al. 2008; Hepperle et al. 2002; Slimani et al. 2017).

ESM Table S7 reports linearity ranges for all biocides. For isoproturon, BIT, OIT, DCOIT, terbutryn, cybutryn, terbuthylazine, carbendazim, IPBC, thiabendazole, tebuconazole and mecoprop, the linearity range was divided into two calibration curves: from the lowest detected concentration to 10 $\mu\text{g/L}$ and from 10 $\mu\text{g/L}$ to 150 $\mu\text{g/L}$. For CMIT and benzalkonium compounds, the whole linearity range (up to 150 or 250 $\mu\text{g/L}$) was validated. For diuron and MIT, smaller linearity ranges were observed (from the lowest detected concentration to 50 $\mu\text{g/L}$).

Concerning instrumental repeatability, ESM Table S8 reports RSDs of the ratio between compound area and its corresponding IS area for the 18-targeted biocides. They ranged from 2% (isoproturon) to 25% (mecoprop). Generally, RSDs were below 10%, showing a good repeatability.

Concerning intermediate precision, RSDs were satisfactory (< 20%) for the lowest concentration of the linearity range for several biocides (terbutryn, cybutryn, terbuthylazine, carbendazim, thiabendazole, and tebuconazole). This value was thus considered as the LOQ_i. For MIT and DCOIT, the targeted RSDs were higher than for the other compounds, 35% and 30% respectively. For CMIT and benzalkonium compounds (C12-C16), the targeted value was fixed at 25% as RSDs remained higher than 20% for the whole linearity range.

All instrumental LOQ_i values are reported in ESM Table S9. LOQ_i were 0.05 $\mu\text{g/L}$ for isoproturon, terbutryn, cybutryn, terbuthylazine, carbendazim, thiabendazole and tebuconazole, and were hence equal to LOD_i; between 0.25 and 0.75 $\mu\text{g/L}$ for diuron, MIT, BIT, OIT and DCOIT; 1 $\mu\text{g/L}$ for IPBC and mecoprop; 2.5 $\mu\text{g/L}$ for CMIT and benzalkonium compounds.

2.2.2. SPE recoveries

First, extraction blanks were analyzed: 100 mL, 200 mL and 500 mL of UP water were loaded following the SPE protocol described in ESM Table S2. No contamination was observed in blanks, except for benzalkonium compounds but this contamination did not exceed that observed in analytical blanks.

Mean SPE recoveries and the corresponding RSDs are presented in Table 2 for each matrix. Globally, good recoveries (> 70%) and low variation (< 25%) were observed. However, low recoveries were obtained for benzalkonium compounds: lower than 58% in surface water and WWTP influents/effluents, and than 34% in stormwater and CSOs. Also, significant variability was observed, as RSDs were up to 58% in CSOs for BZK C12. Therefore, only one significant digit was considered for benzalkonium compounds, which is enough to observe differences between matrices and to study the distribution between dissolved and particulate fractions. MIT recoveries ranged from 10% to 26%. The lowest value was obtained in surface waters with a variability of 45%, because of a higher volume load.

Matrix effects were observed as recoveries varied from one matrix to another. For instance, OIT recoveries were close to 100% in surface waters and WWTP effluents, but were lower (76% - 79%) in wastewater, stormwater and CSOs. Wick et al. (2010) also observed such a result for OIT. For some compounds (isoproturon, DCOIT, terbutryn, terbuthylazine, IPBC, tebuconazole and mecoprop), the signal may be exacerbated, leading to recoveries higher than 100% (Chen et al. 2012).

Table 2 SPE recoveries and RSDs for all the matrices

Biocides	Surface waters/rainwater		WWTP effluents		WWTP influents		Stormwater		CSOs	
	SPE recovery (%)	RSD (%)	SPE recovery (%)	RSD (%)	SPE recovery (%)	RSD (%)	SPE recovery (%)	RSD (%)	SPE recovery (%)	RSD (%)
Diuron	75	8	100	15	82	33	70	28	79	10
Isoproturon	91	13	118	18	113	26	122	10	89	15
MIT	10	45	15	17	20	67	24	62	26	39
BIT	73	21	87	18	150	44	101	23	74	15
CMIT	62	42	80	28	46	37	52	17	66	31
OIT	97	18	102	11	79	30	78	13	76	17
DCOIT	224	31	234	25	128	66	48	36	184	35
BZK C12	30	51	24	55	34	33	24	58	34	42
BZK C14	32	46	27	22	55	50	20	48	30	41
BZK C16	42	34	58	6	58	55	5	31	7	32
Terbutryn	80	11	110	22	98	38	76	26	79	11
Cybutryn	72	13	94	17	81	33	64	19	74	18
Terbuthylazine	89	23	111	27	97	46	77	33	75	10
Carbendazim	59	14	80	38	82	37	86	9	70	17
IPBC	82	15	116	18	100	40	94	42	98	16
Thiabendazole	67	10	92	22	87	31	81	18	72	22
Tebuconazole	129	42	136	19	122	34	89	25	90	18
Mecoprop	98	28	123	21	110	24	88	13	108	24

2.2.3. MAE recoveries

For each extraction, the absence of contamination was verified by an extraction blank (20 mL of extraction solvent). Again, contamination by benzalkonium compounds was observed but did not exceed that observed in analytical blanks. Only ten biocides among the 18 targeted were quantified in the six samples of wastewater (Fig. 3). Most of them showed good recoveries (> 75%) in the first two fractions (F1 + F2) and RSDs were below 20%. Lower recoveries (equal to 50%) and higher variability (35%) were observed for terbutryn and tebuconazole. For these two compounds, concentrations in real samples were corrected by these recoveries. For the others, concentrations were not corrected by their recovery rates.

2.2.4. Matrix effects

Matrix effects were determined for the three IS and are reported in ESM Table S9. For the dissolved fraction, average matrix effects ranged from -26% in wastewater to -3% in surface waters for isoproturon-d6, from -18% in wastewater to +9% in both treated wastewater and surface waters for terbuthylazine-d5, and from -33% in surface waters to +36% in CSOs for mecoprop-d3. In MAE extracts, they ranged from -8% in treated wastewater to +21% in stormwater for isoproturon-d6, from -4% in treated wastewater to +16% in stormwater for terbuthylazine-d5, and from -31% in treated wastewater to +19% in stormwater for mecoprop-d3.

2.2.5. Limits of detection and quantification

LOD and LOQ are provided in ESM (Table S10 and Table S11, respectively). In the dissolved fraction, LOQ_D range from 0.08 ng/L to 189 ng/L depending on the compound and the matrix. LOD_D and LOQ_D of diuron, isoproturon, OIT, DCOIT, terbutryn, cybutryn, terbuthylazine, carbendazim, thiabendazole and tebuconazole are below 1 ng/L; LOD_D and LOQ_D of MIT, BIT, CMIT, IPBC and mecoprop are between 1 and 50 ng/L, and LOD_D and LOQ_D of benzalkonium compounds can be higher than 50 ng/L because of higher instrumental limits and lower recoveries. However, all LOQ remain below PNEC values in surface waters and are thus suitable for environmental analysis. In the literature, LOQ_D vary from one study to another but most of the studies can quantify biocides at concentrations in the range of ng/L or lower (Chen et al. 2012; Moschet et al. 2013; Singer et al. 2010; Van de Voorde et al. 2012; Wieck et al. 2018). In this study, LOQ_D of BIT, OIT and DCOIT are lower than those

previously reported by Rafoth et al. (2007), Singer et al. (2010), Wick et al. (2010), and Wieck et al. (2018). For CMIT, Singer et al. (Singer et al. 2010) obtained LOQ_D of the same order of magnitude (35-40 ng/L) and Wieck et al. (2018) slightly lower (10 ng/L). With regard to benzalkonium compounds, they were quantified by Van de Voorde et al. (2012) at lower concentrations (between 0.07 and 0.09 ng/L). This latter study focused on the analysis of only five quaternary ammonium compounds, whereas the present study describes a multi-residue analysis and extraction issues were encountered.

In the particulate fraction, LOD_P and LOQ_P values rely on the mass of extracted particles, which varies from one sample to another: from 10 to 51 mg in rainwater, from 8.5 to 103 mg in surface waters, from 4.3 to 11 mg in WWTP effluents, from 54 to 84 mg in WWTP influents, from 27 to 130 mg in CSOs, and from 28 to 84 mg in stormwater. Consequently, LOD_P and LOQ_P values can also vary from one order of magnitude to another, especially in surface waters. Minimum and maximum values are reported in ESM Table S11. For most of the biocides, LOQ_P values are in the range of few ng/g.dw. As in the dissolved fraction, limits are higher for benzalkonium compounds and isothiazolinones due to higher instrumental limits.

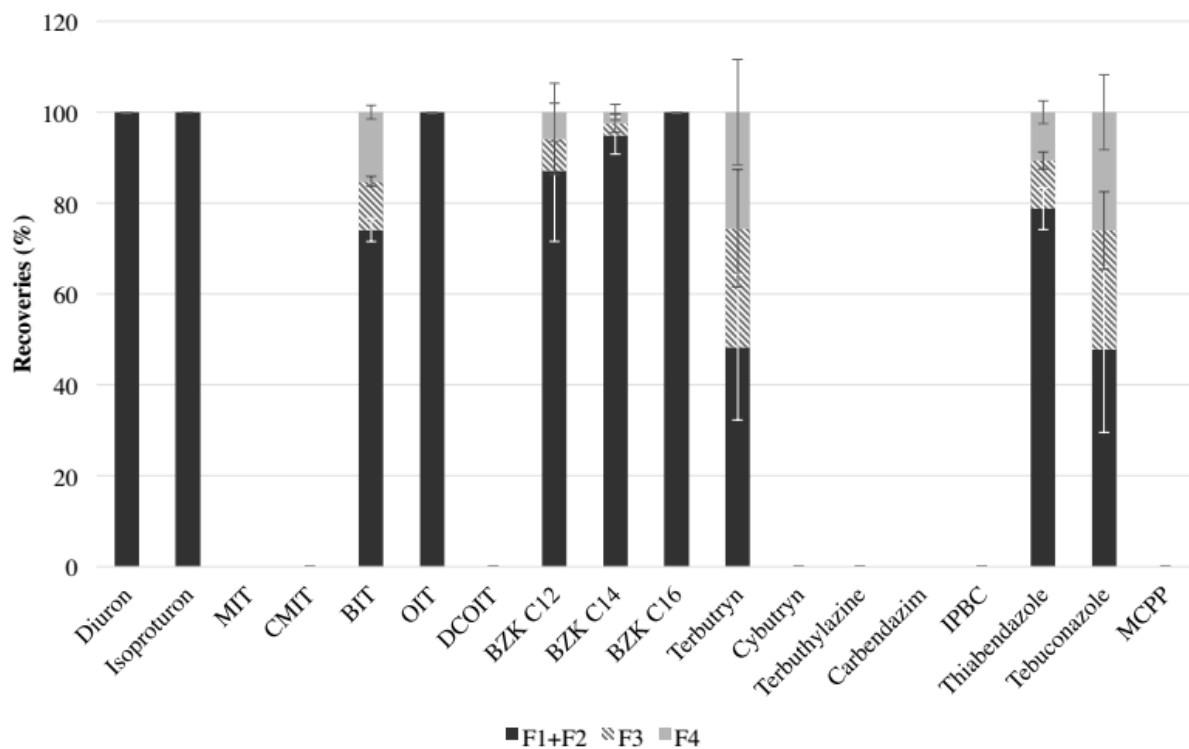


Fig. 3 Amount of biocides collected in each particulate fraction of the six wastewater samples (F1 + F2, F3, F4) compared to the total amount collected (F1 + F2 + F3 + F4)

3. Application to environmental samples

The analytical method was successfully applied to many urban and surface waters. Three sampling campaigns were conducted for each sampling site. The measured concentrations in both dissolved (D ng/L) and particulate (P^* ng/g.dw) fractions are reported in Table 3. Results are discussed in terms of total concentrations (sum of dissolved (D) and particulate concentrations (P , $P = P^* \times C_{SS}$ where C_{SS} is the SS concentration in g/L)).

In rainwater, biocides were frequently detected and quantified. Most of them were measured with a total concentration below 5 ng/L (see ESM Table S12). However, some biocides were quantified at higher concentrations: terbuthylazine, IPBC and tebuconazole were once measured at 38, 13 and 10 ng/L respectively and all samples were contaminated by MIT (39-106 ng/L), CMIT (5.6-57 ng/L), BZK C12 (38-149 ng/L), and BZK C14 (19-68 ng/L). Few data are available in the literature concerning biocide concentrations in urban rainwater. A few studies (Bressy et al. 2012; Potter and Coffin 2017; Scheyer et al. 2007; Zgheib et al. 2012) have

reported dissolved concentrations of diuron, isoproturon, mecoprop and tebuconazole (because of their use as pesticides) much higher than in this work, up to 1.7 µg/L for diuron. A more recent study measured similar dissolved concentrations of terbutryn (0.3-10 ng/L) in Singapore (Zhang et al. 2018).

Three levels of total concentration were observed in WWTP influents: concentrations of MIT, BIT and benzalkonium compounds were significantly higher than 100 ng/L, concentrations of terbutryn, carbendazim, thiabendazole and mecoprop were between 10 and 100 ng/L, and concentrations of isoproturon, CMIT, OIT, DCOIT, cybutryn and IPBC were below 10 ng/L. Concentrations in effluents were of the same order of magnitude, which highlights the limited effects of such treatments to remove those micropollutants. Only MIT and BIT concentrations were significantly lower in effluents compared to influents.

In CSOs, BZK C12 and C14 were measured up to 6 µg/L, diuron up to 0.9 µg/L and BZK C16 up to 0.7 µg/L. Only IPBC was never quantified in both fractions. Concentrations can vary from one order of magnitude to another for MIT, BIT, terbuthylazine, thiabendazole and mecoprop. This could be explained by the variability of storm events (rain intensity, runoff quantity, etc.). In stormwater, BZK C12 was measured with the highest concentrations, up to 20 µg/L. For most of the biocides, concentrations were between 10 and 100 ng/L. Concentrations above 100 ng/L were systematically observed for BZK C14, BZK C16 mecoprop and occasionally for MIT and BIT. Only a few studies have reported some biocide concentrations in stormwater or CSOs (Birch et al. 2011; Gasperi et al. 2008, 2013; Launay et al. 2016; Van de Voorde et al. 2012; Wicke et al. 2015) and only Launay et al. (2016) and Van de Voorde et al. (2012) considered both dissolved and particulate fractions. Significant inter- and intra-study variability was observed, as concentrations depend on the study site, the impervious surface area, or rain intensity. Globally, the concentrations are in agreement with those measured in the present study.

In surface waters, total concentrations were generally below 10 ng/L, but higher concentrations were measured during the first sampling campaign for diuron, BZK C12, terbuthylazine, tebuconazole, and mecoprop. These peaks in concentration might be due to weather and hydrological conditions, as this campaign was conducted during a rainy and flood period. It was also conducted in June, i.e. during a period of pesticide application. Biocides might have leached from soils and building materials. Measured dissolved concentrations occasionally exceeded PNEC values (reported in ESM Table S1) for BZK C12 and diuron. Concentrations of terbuthylazine were of the same order of magnitude as its PNEC. These biocides might therefore represent a risk for aquatic organisms.

Generally, most of the biocides were measured in both dissolved and particulate fractions, but they remain mostly dissolved. Only IPBC was rarely quantified in the dissolved fraction while being frequently measured in the particles. The partition between the particulate and the dissolved fractions is reported in ESM Table S13. The particulate proportion were lower than 20% in most of the samples but they were variable and some compounds could occasionally be most present in particles. For example, particulate proportions of MIT, which is the most hydrophilic compound in this study, varied from 0% in WWTP influents/effluents to 100% in surface waters or CSOs. The particulate proportions of terbutryn, the biocide with the highest octanol/water-partitioning coefficient (log K_{ow} of 3.7) in this study, were below 5% in most of the samples and never exceeded 48%. Proportions of biocides in the particulate fraction depend on the matrix and do not seem to be related to the compound's hydrophobicity. For benzalkonium compounds in particular, their cationic character could also play a role in the sorption mechanisms, as they remained mostly in the dissolved fraction (See ESM Table S13). These results highlight the presence of biocides in particles and thus the need to analyze both dissolved and particulate fractions of water samples in order to assess the transfer of biocides to sediments.

Table 3 Concentrations of biocides in dissolved (D, in ng/L) and *particulate* (*P**, in ng/g.dw) fractions of different urban waters and surface waters

	Fraction (unit)	Rainwater			Surface waters			WWTP effluents			WWTP influents			CSOs			Stormwater		
		1	2	3	1	2	3	1	2	3	1	2	3	1	2	3	1	2	3
Diuron	D (ng/L)	1.2	0.8	<LOQ	19	3.5	2.8	38	11	31	29	3.4	23	900	150	200	32	47	16
	<i>P*</i> (ng/g.dw)	<LOQ	31	<LOQ	<LOQ	<LOQ	<LOQ	<LOQ	<LOQ	<LOQ	21	<LOQ	<LOQ	23	5.0	24	<LOQ	<LOQ	3.0
Isoproturon	D (ng/L)	<LOQ	<LOQ	<LOQ	1.9	0.5	<LOQ	0.9	0.8	<LOD	1.1	1.1	<LOD	7.8	1.3	0.6	0.7	2.8	2.5
	<i>P*</i> (ng/g.dw)	8.0	26	1.6	<LOQ	<LOQ	<LOQ	<LOQ	<LOQ	<LOQ	<LOQ	<LOQ	<LOQ	2.0	0.8	12	2.4	2.5	1.0
MIT	D (ng/L)	38	105	61	<LOD	14	<LOQ	112	65	39	860	430	350	78	51	<LOD	150	65	86
	<i>P*</i> (ng/g.dw)	160	360	33	70	170	<LOD	<LOQ	<LOQ	<LOQ	6.4	<LOQ	<LOQ	22	34	74	110	100	38
BIT	D (ng/L)	2.7	<LOD	<LOQ	2.3	<LOQ	2.5	54	47	26	420	630	290	<LOD	<LOD	27	160	30	33
	<i>P*</i> (ng/g.dw)	<LOQ	<LOQ	<LOQ	0.4	<LOQ	1.0	300	130	<LOQ	130	100	110	20	67	60	310	110	22
CMIT	D (ng/L)	43	21	5.6	<LOD	<LOD	<LOD	<LOD	<LOD	<LOQ	<LOD	<LOD	<LOQ	40	120	30	41	<LOD	<LOD
	<i>P*</i> (ng/g.dw)	2700	4200	<LOD	<LOQ	<LOD	<LOQ	<LOQ	<LOQ	<LOQ	<LOD	<LOD	<LOD	<LOQ	32	<LOD	160	180	170
OIT	D (ng/L)	1.6	3.5	1.7	<LOQ	<LOQ	<LOD	1.4	<LOD	<LOD	4.5	3.2	<LOD	55	20	31	8.1	4.6	6.6
	<i>P*</i> (ng/g.dw)	<LOQ	35	<LOQ	<LOQ	<LOQ	<LOQ	<LOQ	<LOQ	<LOQ	11	<LOQ	6.2	35	6.8	30	25	11	5.8
DCOIT	D (ng/L)	0.9	1.3	1.1	1.6	1.5	1.7	1.3	4.6	3.3	6.6	<LOD	10	-	7.8	6.0	<LOD	<LOD	70
	<i>P*</i> (ng/g.dw)	<LOQ	38	<LOD	<LOD	<LOD	<LOD	<LOD	<LOD	<LOD	<LOQ	<LOD	<LOD	<LOQ	<LOD	<LOD	<LOD	<LOD	<LOD
BZK C12	D (ng/L)	70	30	100	50	40	<LOQ	100	400	300	200	500	2000	600	6000	5000	5000	10000	8000
	<i>P*</i> (ng/g.dw)	3000	4000	2000	1000	30	60	600	20000	7000	1000	600	300	2000	50	6000	700	20000	10000
BZK C14	D (ng/L)	70	20	20	60	60	<LOQ	<LOQ	200	80	<LOQ	400	300	200	5000	4000	2000	200	3000
	<i>P*</i> (ng/g.dw)	<LOQ	3000	800	40	<LOQ	30	900	4000	2000	80	200	200	40	30	3000	200	600	4000
BZK C16	D (ng/L)	20	<LOQ	<LOQ	40	40	<LOQ	<LOQ	80	<LOQ	<LOQ	215	<LOQ	200	700	200	80	300	400
	<i>P*</i> (ng/g.dw)	<LOQ	200	<LOQ	<LOQ	<LOQ	9	400	<LOQ	<LOQ	10	20	30	<LOQ	<LOQ	70	<LOQ	<LOQ	<LOQ
Terbutryn	D (ng/L)	<LOQ	1.0	1.1	2.8	1.2	<LOQ	16	11	12	11	6.2	<LOD	76	60	54	44	30	17
	<i>P*</i> (ng/g.dw)	10	3.6	2.5	<LOQ	1.0	7.0	<LOQ	<LOQ	<LOQ	<LOQ	<LOQ	<LOQ	10	2.5	12	7.4	6.3	3.2
Cybutryn	D (ng/L)	<LOQ	<LOD	<LOD	<LOD	0.2	<LOD	<LOD	<LOD	<LOD	<LOD	<LOD	<LOD	4.1	<LOD	<LOD	3.0	<LOQ	<LOQ
	<i>P*</i> (ng/g.dw)	<LOD	<LOD	<LOD	<LOQ	<LOQ	<LOQ	<LOD	<LOD	<LOQ	<LOD	<LOD	<LOD	0.3	<LOD	<LOD	1.6	1.7	<LOD
Terbuthylazine	D (ng/L)	<LOQ	38	<LOD	51	3.8	2.4	<LOD	2.2	1.1	<LOD	2.1	2.1	11	<LOQ	<LOQ	17	14	20
	<i>P*</i> (ng/g.dw)	6.6	38	1.0	3.3	1.9	0.3	<LOQ	<LOQ	<LOQ	<LOQ	<LOQ	<LOQ	0.6	0.7	11	2.2	2.8	2.2
Carbendazim	D (ng/L)	<LOQ	3.5	<LOQ	8.2	3.7	7.3	3.5	9.8	22	<LOD	12	36	170	65	52	40	49	44
	<i>P*</i> (ng/g.dw)	16	31	2.6	1.2	<LOQ	1.0	<LOQ	<LOQ	<LOQ	<LOQ	<LOQ	<LOQ	20	3.9	15	10	10	18
IPBC	D (ng/L)	3.1	13	5.2	<LOD	<LOD	<LOD	<LOD	<LOD	<LOD	<LOD	<LOD	<LOD	<LOD	<LOD	<LOD	<LOD	<LOD	19
	<i>P*</i> (ng/g.dw)	218	<LOQ	23	9.2	38	54	532	285	592	<LOQ	15	30	<LOQ	<LOQ	<LOQ	35	32	16
Thiabendazole	D (ng/L)	<LOQ	<LOD	<LOQ	1.1	0.9	<LOD	19	13	14	10	14	2.8	9.8	<LOQ	<LOQ	10	11	6.0
	<i>P*</i> (ng/g.dw)	15	20	4.5	0.2	<LOQ	0.8	<LOQ	<LOQ	<LOQ	1.4	4.8	2.6	8.6	5.5	13	7.5	6.5	5.4
Tebuconazole	D (ng/L)	0.6	9.7	0.6	150	6.1	1.9	5.9	6.2	4.2	3.2	9.0	1.0	44	32	30	19	25	26
	<i>P*</i> (ng/g.dw)	26	150	6.0	42	17	12	<LOQ	23	<LOQ	<LOQ	<LOQ	<LOQ	18	4.4	20	13	16	16
Mecoprop	D (ng/L)	<LOD	<LOD	<LOD	22	11	<LOD	8.9	24	<LOD	<LOD	<LOD	<LOD	150	85	16	190	840	470
	<i>P*</i> (ng/g.dw)	<LOQ	62	<LOQ	<LOD	<LOD	<LOD	<LOD	<LOD	<LOD	<LOD	<LOD	<LOD	4.3	<LOQ	<LOQ	<LOQ	44	<LOQ

Conclusion

A fast, sensitive and accurate method was developed to analyze by HPLC-MS/MS 18 biocides employed, among other things, in building materials in both dissolved and particulate fractions of many water samples. The dissolved fraction was extracted by SPE, which provides good recoveries for most of the biocides (> 70%), except for MIT (< 25%) and benzalkonium compounds (often lower than 35%), because of their respectively strong hydrophilic and hydrophobic properties. The method developed allows the particulate fraction of diverse water samples to be extracted by MAE, which has rarely been done in previous studies. Thanks to this procedure, biocides can be quantified in samples at trace level, in the range of ng/L in the dissolved fraction and in the range of ng/g.dw in the particulate fraction for most of the biocides and matrices. This method is thus suitable for biocide monitoring in urban and surface waters. It was successfully applied to rainwater, surface waters, WWTP influents and effluents, CSOs, and stormwater. The results highlighted the presence of biocides in both fractions and the relevance of measuring these substances in the particulate fraction. In rainwater, biocides are less frequently quantified. In urban waters, concentrations of biocides ranged from few ng/L to hundreds of ng/L depending on the compound and the sampling campaign. Finally, in surface waters, most of the biocides were measured at less than 10 ng/L, but peaks in concentration were observed after rain events, exceeding PNEC levels. These first results point to a significant transfer of biocides from the urban environment to surface waters via stormwater and treated wastewater discharges, and a potential risk to aquatic organisms.

Author contributions

The manuscript was written through contributions of all authors. All authors have given approval to the final version of the manuscript.

Notes

The authors declare no competing financial interest.

Acknowledgment

The authors gratefully acknowledge the Central Laboratory of the Police Prefecture of Paris (LCPP) for the funding of this work. The study has been performed within the framework of the OPUR research program funded by the Seine-Normandy Water Agency, the City of Paris, the greater Paris sanitation authority (SIAAP), the Hauts-de-Seine Departmental Council, the Seine Saint-Denis Departmental Council and the Val-de-Marne Departmental Council. The authors also thank the Brigade Fluviale de la Préfecture de Police (Major Bizeray) and the Brigade Fluviale de la Gendarmerie Nationale des Yvelines (Major Duquesnois), the SIAAP (in particular Vincent Rocher, Romain Mailler and Céline Briand) and the City of Paris (in particular Pascale Neveu and Frédéric Béthouart) for their assistance during sampling campaigns.

Bibliography

- Andrade, T. S., Henriques, J. F., Almeida, A. R., Machado, A. L., Koba, O., Giang, P. T., Soares, A. M.V.M., & Domingues, I. (2016). Carbendazim Exposure Induces Developmental, Biochemical and Behavioural Disturbance in Zebrafish Embryos. *Aquatic Toxicology*, 170, 390–99. <https://doi.org/10.1016/j.aquatox.2015.11.017>.
- Bester, K., & Lamani, X. (2010). Determination of biocides as well as some biocide metabolites from facade runoff waters by solid phase extraction and high performance liquid chromatographic separation and tandem mass spectrometry detection. *Journal of Chromatography A*, 1217(32), 5204–5214. <https://doi.org/10.1016/j.chroma.2010.06.020>
- Bester, K., Scholes, L., Wahlberg, C., & McArdell, C. S. (2008). Sources and Mass Flows of Xenobiotics in Urban Water Cycles—an Overview on Current Knowledge and Data Gaps. *Water Air Soil Pollut*, 17.
- Birch, H., Mikkelsen, P. S., Jensen, J. K., & Lützhøft, H.-C. H. (2011). Micropollutants in stormwater runoff and combined sewer overflow in the Copenhagen area, Denmark. *Water Science & Technology*, 64(2), 485–493. <https://doi.org/10.2166/wst.2011.687>
- Bollmann, U. E., Minelgaite, G., Schlüsener, M., Ternes, T., Vollertsen, J., & Bester, K. (2016). Leaching of Terbutryn and Its Photodegradation Products from Artificial Walls under Natural Weather Conditions. *Environmental Science & Technology*, 50(8), 4289–4295. <https://doi.org/10.1021/acs.est.5b05825>
- Bollmann, U. E., Vollertsen, J., Carmeliet, J., & Bester, K. (2014a). Dynamics of biocide emissions from buildings in a suburban stormwater catchment – Concentrations, mass loads and emission processes. *Water Research*, 56, 66–76. <https://doi.org/10.1016/j.watres.2014.02.033>
- Bollmann, U. E., Tang, C., Eriksson, E., Jönsson, K., Vollertsen, J., & Bester, K. (2014b). Biocides in urban wastewater treatment plant influent at dry and wet weather: Concentrations, mass flows and possible sources. *Water Research*, 60, 64–74. <https://doi.org/10.1016/j.watres.2014.04.014>
- Bollmann, U. E., Minelgaite, G., Schlüsener, M., Ternes, T. A., Vollertsen, J., & Bester, K. (2017). Photodegradation of octylisothiazolinone and semi-field emissions from facade coatings. *Scientific Reports*, 7, 41501–1–9. <https://doi.org/10.1038/srep41501>
- Bressy, A., Gromaire, M.-C., Lorgeoux, C., Saad, M., Leroy, F., & Chebbo, G. (2012). Towards the determination of an optimal scale for stormwater quality management: Micropollutants in a small residential catchment. *Water Research*, 46(20), 6799–6810. <https://doi.org/10.1016/j.watres.2011.12.017>
- Burkhardt, M., Junghans, M., Zuleeg, S., Boller, M., Schoknecht, U., Lamani, X., Bester, K., Vonbank, R., & Simmler, S. (2009). Biozide in Gebäudefassaden – ökotoxikologische Effekte, Auswaschung und Belastungsabschätzung für Gewässer. *Umweltwissenschaften und Schadstoff-Forschung*, 21(1), 36–47. <https://doi.org/10.1007/s12302-008-0033-1>.
- Burkhardt, M., Zuleeg, S., Vonbank, R., Bester, K., Carmeliet, J., Boller, M., & Wangler, T. (2012). Leaching of Biocides from Façades under Natural Weather Conditions. *Environmental Science & Technology*, 46(10), 5497–5503. <https://doi.org/10.1021/es2040009>
- Burkhardt, M., Zuleeg, S., Vonbank, R., Schmid, P., Hean, S., Lamani, X., et al. (2011). Leaching of additives from construction materials to urban storm water runoff. *Water Science & Technology*, 63(9), 1974–1982. <https://doi.org/10.2166/wst.2011.128>
- Chen, Z.-F., Ying, G.-G., Lai, H.-J., Chen, F., Su, H.-C., Liu, Y.-S., et al. (2012). Determination of biocides in different environmental matrices by use of ultra-high-performance liquid chromatography–tandem mass spectrometry. *Analytical and Bioanalytical Chemistry*, 404(10), 3175–3188. <https://doi.org/10.1007/s00216-012-6444-2>
- Chitescu, C. L., Oosterink, E., de Jong, J., & Stolker, A. A. M. L. (2012). Ultrasonic or accelerated solvent extraction followed by U-HPLC-high mass accuracy MS for screening of pharmaceuticals and fungicides in soil and plant samples. *Talanta*, 88, 653–662.
- Cotton, J., Leroux, F., Broudin, S., Poirel, M., Corman, B., Junot, C., & Ducruix, C. (2016). Development and validation of a multiresidue method for the analysis of more than 500 pesticides and drugs in water based on on-line and liquid chromatography coupled to high resolution mass spectrometry. *Water Research*, 104, 20–27. <https://doi.org/10.1016/j.watres.2016.07.075>

- Dulio, V., von der Ohe, P. C., Botta, F., Ipolyi, I., Ruedel, H., & Slobodnik, J. (2015). *The NORMAN Network - Special view on biocides as emerging substances, présentation Workshop NORMAN, 25-26 juin 2015, Berlin, Allemagne*. Berlin. <http://www.norman-network.net/?q=node/230>
- Friedle, A., Thumulla, J., & Snepvangers, K. (2008). Quaternary ammonium compounds (QUAT) in house dust. *Indoor Air*, 4, 17–22.
- Gasperi, J., Garnaud, S., Rocher, V., & Moilleron, R. (2008). Priority pollutants in wastewater and combined sewer overflow. *Science of The Total Environment*, 407(1), 263–272. <https://doi.org/10.1016/j.scitotenv.2008.08.015>
- Gasperi, J., Sebastian, C., Ruban, V., Delamain, M., Percot, S., Wiest, L., et al. (2013). Micropollutants in urban stormwater: occurrence, concentrations, and atmospheric contributions for a wide range of contaminants in three French catchments. *Environmental Science and Pollution Research*, 21(8), 5267–5281. <https://doi.org/10.1007/s11356-013-2396-0>
- Geara-Matta, D. (2012). *Flux et sources des parabènes, du triclosan et du triclocarban en milieux urbains denses: comparaison entre Paris et Beyrouth. Thèse de doctorat (Sciences de l'Univers et Environnement)*. Université Paris-Est, 178 p.
- Geissen, V., Mol, H., Klumpp, E., Umlauf, G., Nadal, M., van der Ploeg, M., et al. (2015). Emerging pollutants in the environment: A challenge for water resource management. *International Soil and Water Conservation Research*, 3(1), 57–65. <https://doi.org/10.1016/j.iswcr.2015.03.002>
- Hepperle, J., Schüle, E., Kolberg, D., & Scherbaum, E. (2002). Determination of quaternary ammonium compound residues in fruits and vegetables by QuEChERS following LC-MS/MS analysis. 5 p. <https://pdfs.semanticscholar.org/9f07/d9f1ae9b695391792d05fb5027df23225585.pdf>
- Hildebrandt, A., Lacorte, S., & Barceló, D. (2007). Assessment of priority pesticides, degradation products, and pesticide adjuvants in groundwaters and top soils from agricultural areas of the Ebro river basin. *Analytical and Bioanalytical Chemistry*, 387, 1459–1468.
- Huang, O., Zhang, J., Xiong, S., Peng, X., Wei, G., Liu, L., et al. (2018). Development of Ultrasound-Assisted Extraction of Commonly Used Azole Antifungals in Soils. *Analytical Methods*, 10(44), 5265–5272.
- Jiang, J., Wu, S., Wang, Y., An, X., Cai, L., Zhao, X., & Wu, C. (2015). Carbendazim Has the Potential to Induce Oxidative Stress, Apoptosis, Immunotoxicity and Endocrine Disruption during Zebrafish Larvae Development. *Toxicology in Vitro*, 29 (7), 1473–81. <https://doi.org/10.1016/j.tiv.2015.06.003>.
- Juksu, K., Zhao, J.-L., Liu, Y.-S., Yao, L., Sarin, C., Sreesai, S., et al. (2019). Occurrence, fate and risk assessment of biocides in wastewater treatment plants and aquatic environments in Thailand. *Science of The Total Environment*, 690, 1110–1119.
- Kalogridi, E.-C., Christophoridis, C., Bizani, E., Drimaropoulou, G., & Fytianos, K. (2014). Part II: temporal and spatial distribution of multiclass pesticide residues in lake sediments of northern Greece: application of an optimized MAE-LC-MS/MS pretreatment and analytical method. *Environmental Science and Pollution Research*, 21(12), 7252–7262.
- Launay, M. A., Dittmer, U., & Steinmetz, H. (2016). Organic micropollutants discharged by combined sewer overflows – Characterisation of pollutant sources and stormwater-related processes. *Water Research*, 104, 82–92. <https://doi.org/10.1016/j.watres.2016.07.068>
- Masiá, A., Vázquez, K., Campo, J., & Picó, Y. (2015). Assessment of two extraction methods to determine pesticides in soils, sediments and sludges. Application to the Túria River Basin. *Journal of Chromatography A*, 1378, 19–31. <https://doi.org/10.1016/j.chroma.2014.11.079>
- Merel, S., Benzing, S., Gleiser, C., Di Napoli-Davis, G., & Zwiener, C. (2018). Occurrence and overlooked sources of the biocide carbendazim in wastewater and surface water. *Environmental Pollution*, 239, 512–521. <https://doi.org/10.1016/j.envpol.2018.04.040>
- Miege, C., Dugay, J., & Hennion, M. C. (2003). Optimization, validation and comparison of various extraction techniques for the trace determination of polycyclic aromatic hydrocarbons in sewage sludges by liquid chromatography coupled to diode-array and fluorescence detection. *Journal of Chromatography A*, 995(1–2), 87–97.
- Mohr, S., Schröder, H., Feibicke, M., Berghahn, R., Arp, W., & Nicklisch, A. (2008). Long-term effects of the

- antifouling booster biocide Irgarol 1051 on periphyton, plankton and ecosystem function in freshwater pond mesocosms. *Aquatic Toxicology*, 90(2), 109–120. <https://doi.org/10.1016/j.aquatox.2008.08.004>
- Mompelat, S., Fourmond, M.-P., Laurentie, M., Verdon, E., Hurtaud-Pessel, D., & Abjean, J.-P. (2015). Validation of a liquid chromatography–high-resolution mass spectrometry method for the analysis of ceftiofur in poultry muscle, kidneys and plasma: A unique accuracy profile for each and every matrix. *Journal of Chromatography A*, 1407, 119–129. <https://doi.org/10.1016/j.chroma.2015.06.043>
- Moschet, C., Piazzoli, A., Singer, H., & Hollender, J. (2013). Alleviating the reference standard dilemma using systematic exact mass suspect screening approach with liquid chromatography-high resolution mass spectrometry. *Analytical Chemistry*, 85, 10312–10320.
- Moschet, C., Wittmer, I., Simovic, J., Junghans, M., Piazzoli, A., Singer, H. P., et al. (2014). How a Complete Pesticide Screening Changes the Assessment of Surface Water Quality. *Environmental Science & Technology*, 48(10), 5423–5432. <https://doi.org/10.1021/es500371t>
- Östman, M., Lindberg, R. H., Fick, J., Björn, E., & Tysklind, M. (2017). Screening of biocides, metals and antibiotics in Swedish sewage sludge and wastewater. *Water research*, 115, 318–328.
- Paijens, C., Bressy, A., Frère, B., & Moilleron, R. (2019). Prioritization of leached biocides from building materials towards aquatic environment monitoring (in French). *Techniques Sciences Méthodes*, 12 2019. <https://doi.org/10.36904/tsm/201912197>
- Paijens, C., Bressy, A., Frère, B., & Moilleron, R. (2020). Biocide emissions from building materials during wet weather: identification of substances, mechanism of release and transfer to the aquatic environment. *Environmental Science and Pollution Research*. <https://doi.org/10.1007/s11356-019-06608-7>
- Potter, T. L., & Coffin, A. W. (2017). Assessing pesticide wet deposition risk within a small agricultural watershed in the Southeastern Coastal Plain (USA). *Science of The Total Environment*, 580, 158–167.
- Rafoth, A., Gabriel, S., Sacher, F., & Brauch, H.-J. (2007). Analysis of isothiazolinones in environmental waters by gas chromatography–mass spectrometry. *Journal of Chromatography A*, 1164(1–2), 74–81. <https://doi.org/10.1016/j.chroma.2007.07.040>
- Sánchez-Rodríguez, A., Sosa-Ferrera, Z., & Santana-Rodríguez, J. J. (2011). Applicability of microwave-assisted extraction combined with LC–MS/MS in the evaluation of booster biocide levels in harbour sediments. *Chemosphere*, 82, 96–102.
- Scheyer, A., Morville, S., Mirabel, P., & Millet, M. (2007). Pesticides analysed in rainwater in Alsace region (Eastern France): Comparison between urban and rural sites. *Atmospheric Environment*, 41, 7241–7252.
- Shah, J., Jan, M. R., Ara, B., & Shehzad, F.-N. (2011). Quantification of triazine herbicides in soil by microwave-assisted extraction and high-performance liquid chromatography. *Environmental Monitoring and Assessment*, 178(111–119).
- Singer, H. P., Jaus, S., Hanke, I., Lück, A., Hollender, J., & Alder, A. C. (2010). Determination of biocides and pesticides by on-line solid phase extraction coupled with mass spectrometry and their behaviour in wastewater and surface water. *Environmental Pollution*, 158(10), 3054–3064. <https://doi.org/10.1016/j.envpol.2010.06.013>
- Slimani, K., Féret, A., Pirotais, Y., Maris, P., Abjean, J.-P., & Hurtaud-Pessel, D. (2017). Liquid chromatography-tandem mass spectrometry multiresidue method for the analysis of quaternary ammonium compounds in cheese and milk products: Development and validation using the total error approach. *Journal of Chromatography A*, 1517, 86–96. <https://doi.org/10.1016/j.chroma.2017.08.034>
- Stipičević, S., Galzina, N., Udiković-Kolić, N., Jurina, T., Mendaš, G., Dvoršćak, M., et al. (2015). Distribution of terbuthylazine and atrazine residues in crop-cultivated soil: The effect of herbicide application rate on herbicide persistence. *Geoderma*, 259–260, 300–309.
- Uhl, M., Gans, O., Grillitsch, B., Fürhacker, M., & Kreuzinger, N. (2005). *Grundlagen Zur Risikoabschätzung Für Quaternäre Ammoniumverbindungen*, 157 p. http://www.academia.edu/download/40282155/Grundlagen_zur_Risikoabschätzung_fr_quate20151122-11272-eisz97.pdf.
- Van de Voorde, A., Lorgeoux, C., Gromaire, M.-C., & Chebbo, G. (2012). Analysis of quaternary ammonium compounds in urban stormwater samples. *Environmental Pollution*, 164, 150–157.

<https://doi.org/10.1016/j.envpol.2012.01.037>

Vermeirssen, E. L. M., Campiche, S., Dietschweiler, C., Werner, I., & Burkhardt, M. (2018). Ecotoxicological Assessment of Immersion Samples from Facade Render Containing Free or Encapsulated Biocides: Ecotoxicity of leachates from facade renders with biocides. *Environmental Toxicology and Chemistry*, 37(8), 2246–2256. <https://doi.org/10.1002/etc.4176>

Vial, J., Le Mapihan, K., & Jardy, A. (2003). What is the best means of estimating the detection and quantification limits of a chromatographic method? *Chromatographia*, 57(1), S303–S306.

Wick, A., Fink, G., & Ternes, T. A. (2010). Comparison of electrospray ionization and atmospheric pressure chemical ionization for multi-residue analysis of biocides, UV-filters and benzothiazoles in aqueous matrices and activated sludge by liquid chromatography–tandem mass spectrometry. *Journal of Chromatography A*, 1217(14), 2088–2103. <https://doi.org/10.1016/j.chroma.2010.01.079>

Wicke, D., Matzinger, A., & Rouault, P. (2015). *Relevanz organischer Spurenstoffe im Regenwasserabfluss Berlins*. Kompetenzzentrum Wasser Berlin, 99 p. https://www.kompetenz-wasser.de/wp-content/uploads/2017/11/abschlussbericht_ogre_final_rev2.pdf

Wieck, S., Olsson, O., & Kümmerer, K. (2018). Not only biocidal products: Washing and cleaning agents and personal care products can act as further sources of biocidal active substances in wastewater. *Environment International*, 115, 247–256. <https://doi.org/10.1016/j.envint.2018.03.040>

Wieck, S., Olsson, O., & Kümmerer, K. (2016). Possible underestimations of risks for the environment due to unregulated emissions of biocides from households to wastewater. *Environment international*, 94, 695–705.

Zgheib, S., Moilleron, R., & Chebbo, G. (2012). Priority pollutants in urban stormwater: Part 1 – Case of separate storm sewers. *Water Research*, 46(20), 6683–6692. <https://doi.org/10.1016/j.watres.2011.12.012>

Zhang, H., Watts, S., Philix, M. C., Snyder, S. A., & Ong, C. N. (2018). Occurrence and distribution of pesticides in precipitation as revealed by targeted screening through GC-MS/MS. *Chemosphere*, 211, 210–217.

Electronic Supplementary material

Determination of 18 biocides in both the dissolved and particulate fractions of urban and surface waters by HPLC-MS/MS

Claudia Paijens^{1,2}, Bertrand Frère², Emilie Caupos¹, Régis Moilleron¹, and Adèle Bressy^{1,*}

¹ Leesu, Ecole des Ponts, Univ Paris Est Creteil, Marne-la-Vallée, France

² Laboratoire Central de la Préfecture de Police, Paris, France

*corresponding author: adele.bressy@enpc.fr

Table S1 Information on the 18-targeted biocides

Biocide	Abbreviation	CAS number	Formula	MW (g/mol)	Log Kow	pKa	PNEC (µg/L)
Diuron		330-54-1	C ₉ H ₁₀ Cl ₂ N ₂ O	233,1	2,85		0,02
Isoproturon		34123-59-6	C ₁₂ H ₁₈ N ₂ O	206,3	2,5		0,021
Methylisothiazolinone	MIT	2682-20-4	C ₄ H ₅ NOS	115,2	-0,49		3,9
Benzisothiazolinone	BIT	2634-33-5	C ₇ H ₅ NOS	151,2	0,64		
Chloro-methylisothiazolinone	CMIT	26172-55-4	C ₄ H ₄ ClNOS	149,6	0,4		0,049
Octylisothiazolinone	OIT	26530-20-1	C ₁₁ H ₁₉ NOS	213,3	2,45		0,013
Dichloro-octylisothiazolinone	DCOIT	64359-81-5	C ₁₁ H ₁₇ Cl ₂ NOS	282,2	3,59		0,008
Benzyl dimethyldodecyl ammonium chloride	BZK C12	139-07-1	C ₂₁ H ₃₈ ClN	304,5	1,7		0,04
Benzyl dimethyltetradecyl ammonium chloride	BZK C14	139-08-2	C ₂₃ H ₄₂ ClN	346,6	2,5		
Benzyl dimethylhexadecyl ammonium chloride	BZK C16	122-18-9	C ₂₅ H ₄₇ ClN	388,7	3,2		
Terbutryn		886-50-0	C ₁₀ H ₁₉ N ₅ S	241,4	3,7	4,3	0,034
Cybutryn (Irgarol 1051)		28159-98-0	C ₁₁ H ₁₉ N ₅ S	253,4	3,7	4,1	0,001
Terbuthylazine		5915-41-3	C ₉ H ₁₆ ClN ₅	229,7	3,0	2	0,06
Carbendazim		10605-21-7	C ₉ H ₉ N ₃ O ₂	191,2	1,5	4,2	0,034
Iodopropynyl butylcarbamate	IPBC	55406-53-6	C ₈ H ₁₂ INO ₂	281,1	2,8		0,026
Thiabendazole		148-79-8	C ₁₀ H ₇ N ₃ S	201,2	2,4	4,7 & 12	1,2
Tebuconazole		107534-96-3	C ₁₆ H ₂₂ ClN ₃ O	307,8	3,7	5	1
Mecoprop		93-65-2	C ₁₀ H ₁₁ ClO ₃	214,6	0,1	3,7	44

MW: molecular weight

PNEC: predicted no effect concentration

Table S2 Optimized SPE protocol

Step	Description
Pre step	Acidification of the sample (0.1% formic acid)
Conditioning of the HR-X cartridge (200 mg, 6 mL)	(i) 5 mL DCM (ii) 10 mL EtAc (iii) 10 mL MeOH (iv) 10 mL UP water + 0.1% HCOOH
Load sample	10 mL/min
Washing	2 mL UP water + 0.1% HCOOH
Drying under N ₂	30 min
Elution	(i) 6 mL MeOH (ii) 3 mL EtAc (iii) 2 mL DCM
Post step	Storage at - 8°C in freezer Evaporation under nitrogen flow Filtration through a 0.2 µm syringe filter Addition of injection internal standards Final volume before injection: 1 mL of mobile phase (80% acidified UP water and 20% acidified MeOH)

Table S3 Optimized particulate extraction

Step	Description
Preparation of the sample	Cutting of the filter into small pieces Addition of 20 mL of MeOH/DCM (60/40 v/v)
Microwaves assisted extraction Cycle 1	0-5 min: from room temperature to 100°C 5-10 min: 100°C Cooling
Filtration of the extract	Through a pleated filter previously dampened then rinsed with 4 mL of extraction solvent
Microwaves assisted extraction Cycle 2	Addition of 20 mL of extraction solvent, second cycle of extraction and filtration of the extract
Pre evaporation	With a Rotavapor (Büchi) until 4 mL
Post step	Storage at -8°C in freezer Evaporation under nitrogen flow Filtration through a 0.2 µm syringe filter Addition of injection internal standards Final volume before injection: 1 mL of mobile phase (80% acidified UP water and 20% acidified MeOH)

Table S4 MS parameters

MS parameters	Set values
Capillary voltage	0,8 kV in positive mode -2,3 kV in negative mode
Extractor voltage	3 V
Radio frequency lens	0.1 V
Source temperature	150°C
Desolvation temperature	400°C
Desolvation gas flow	600 L/h
Cone gas flow	50 L/h

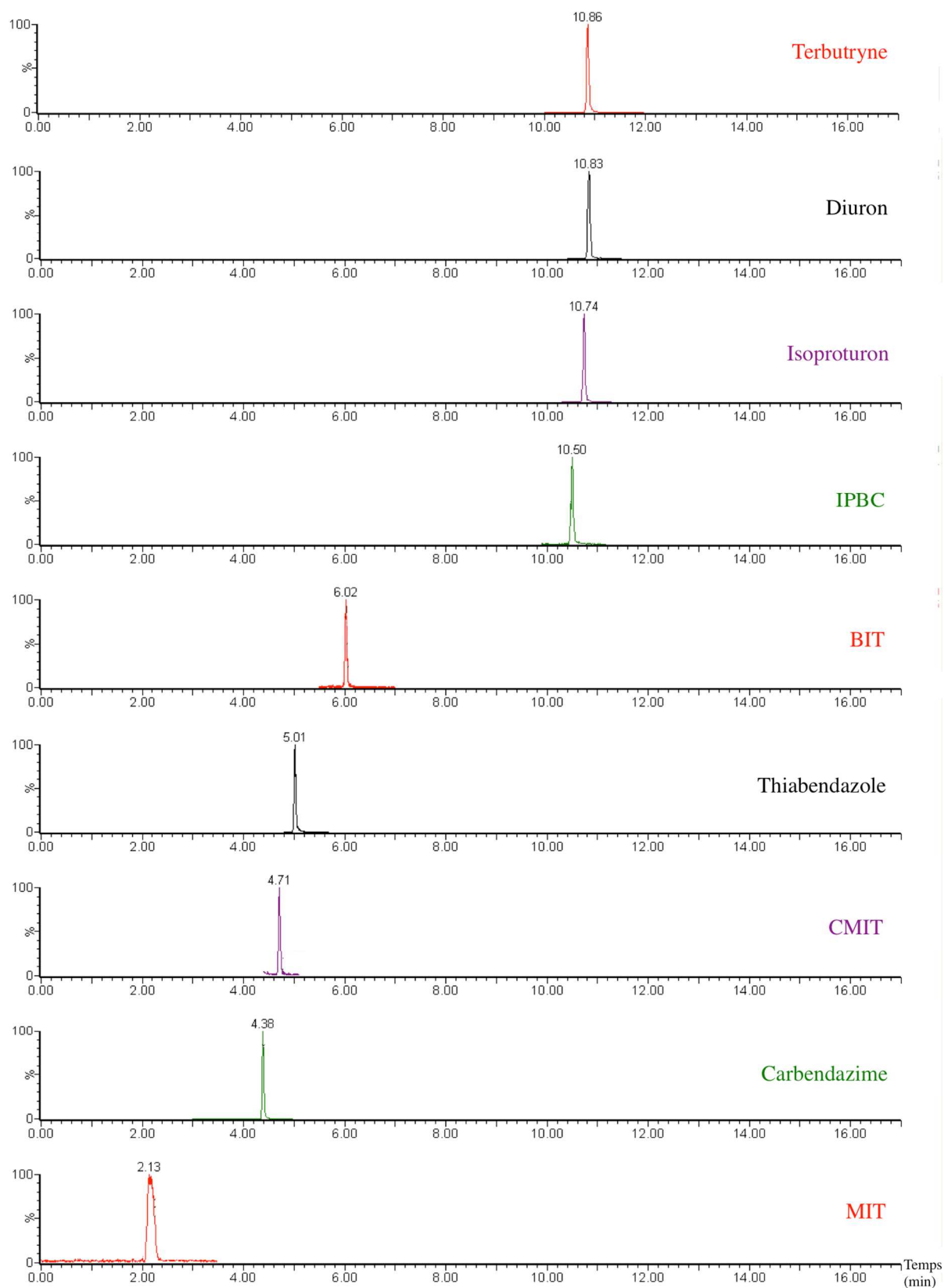


Fig. S1 Chromatograms obtained with the developed HPLC-MS/MS method (mobile phase A/B, 80/20, spiked at 10 $\mu\text{g/L}$) (1/2)

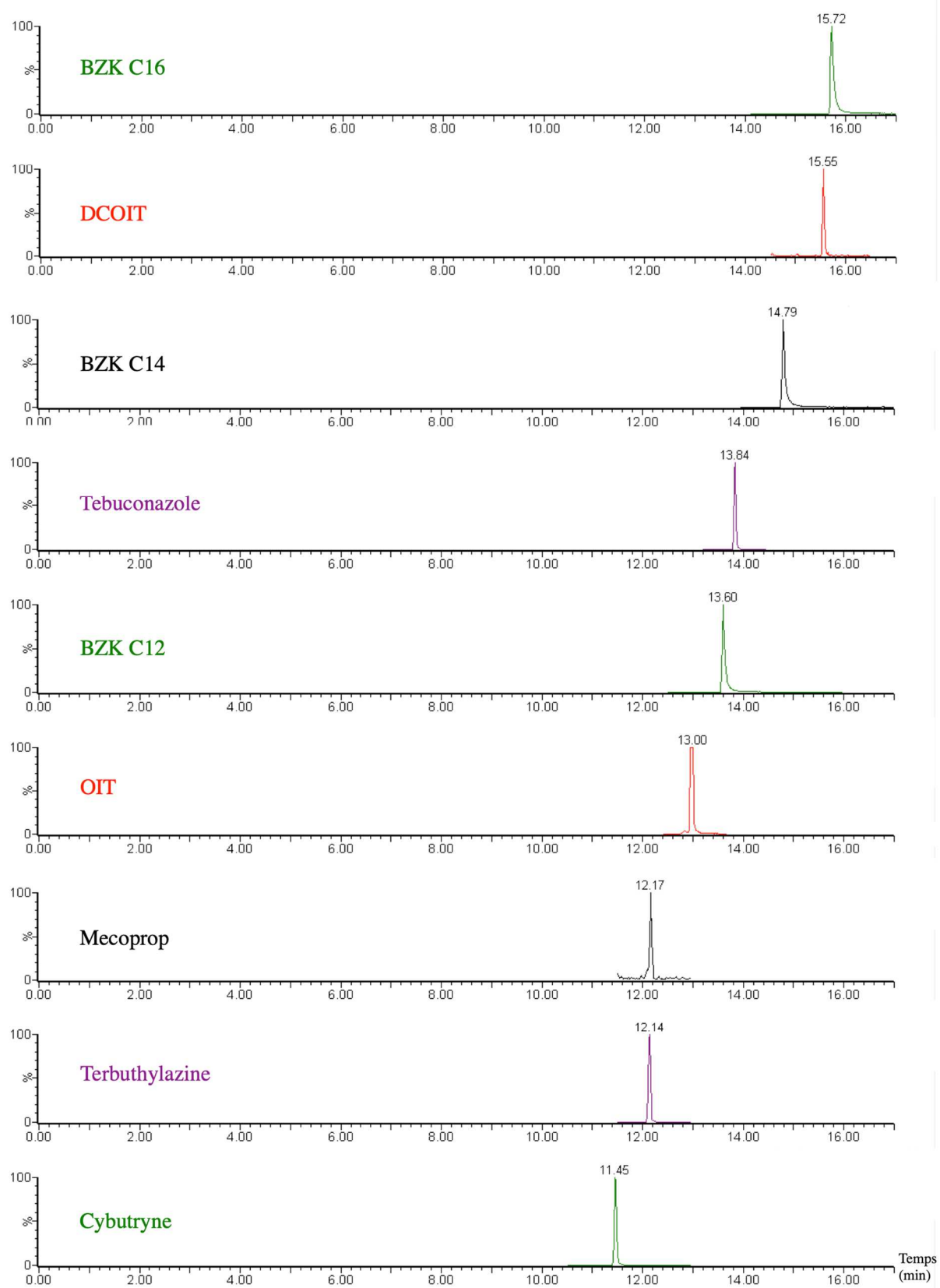


Fig. S2 Chromatograms obtained with the developed HPLC-MS/MS method (mobile phase A/B, 80/20, spiked at 10 $\mu\text{g/L}$) (2/2)

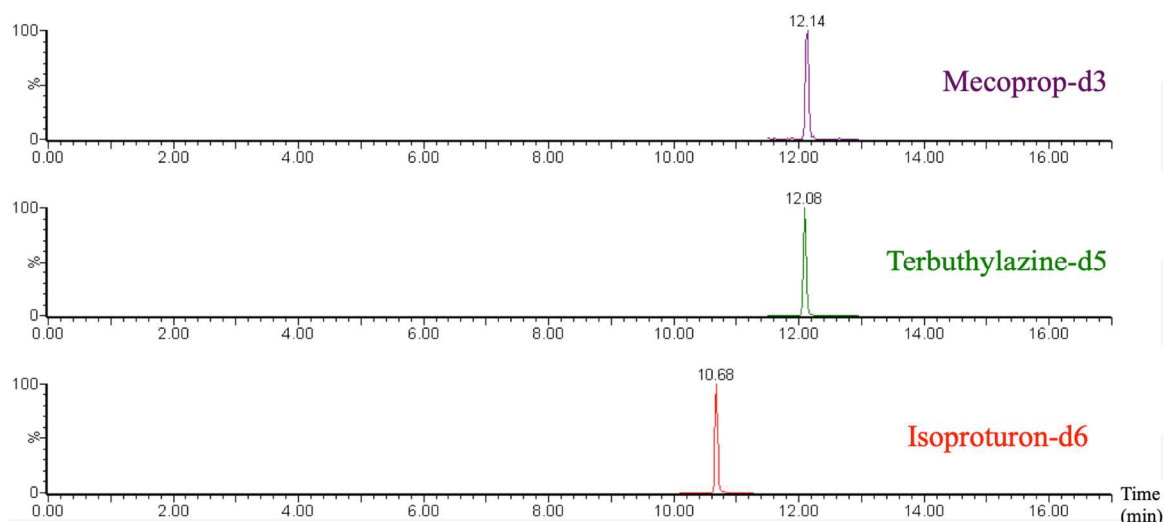


Fig. S3 Chromatograms of internal standards obtained with the developed HPLC-MS/MS method (mobile phase A/B, 80/20, spiked at 50 $\mu\text{g/L}$)

Table S5 Spiking concentration for the determination of SPE recoveries

Matrix	Concentrations of biocides (ng/L)	Concentrations of benzalkoniums ($\mu\text{g/L}$)
Combined sewer overflows	50; 100; 250	10; 20
Stormwater	50; 125; 375	-
Untreated wastewater	50; 100; 250	2.5; 10
Treated wastewater	25; 50; 125	0.125; 1.25
Surface waters	10; 20; 50	50; 500

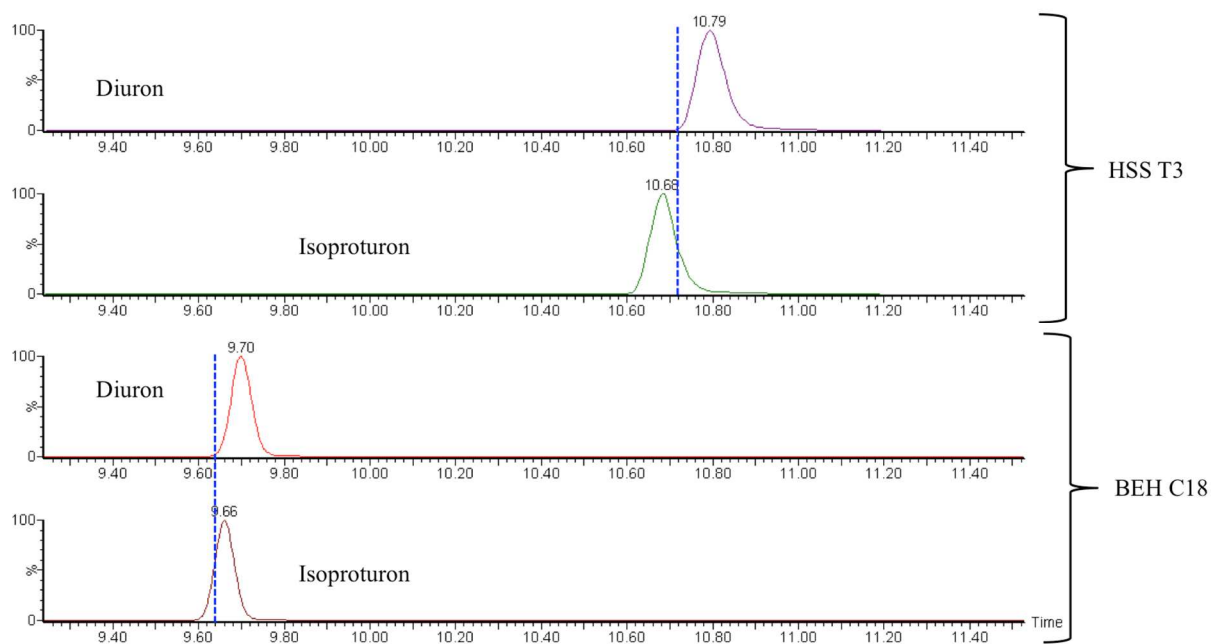


Fig. S4 Comparison of chromatograms of diuron and isoproturon obtained with HSS T3 column and BEH C18 column

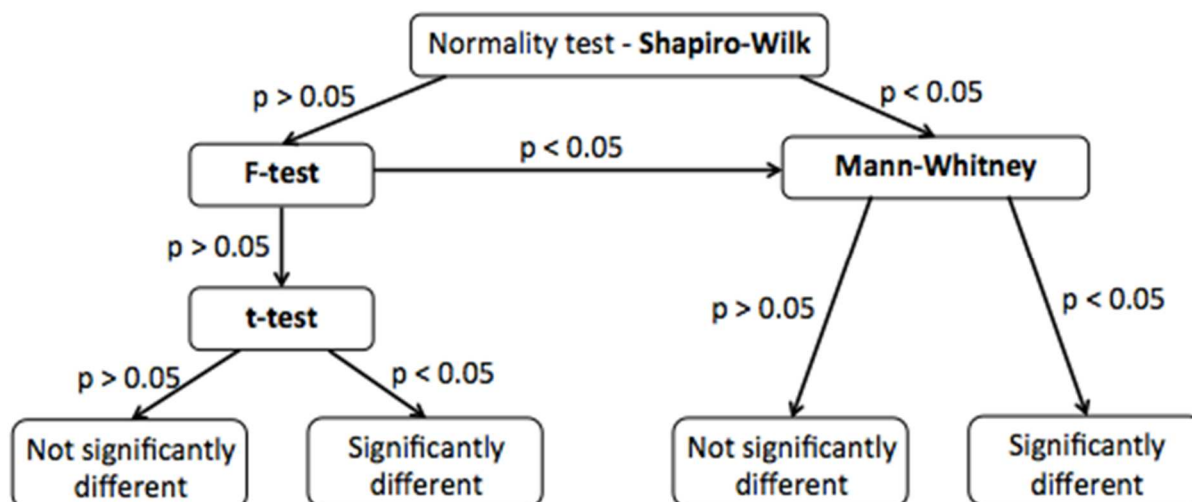


Fig. S5 Statistical tests, which were performed in order to compare SPE cartridges

Table S6 Comparison of the two SPE cartridges – Results of the statistical tests

Biocides	Normality (Shapiro-Wilk)		Homogeneity of variances (F-test)	Equality of means (T-test) or medians (Mann-Whitney)		
	p value			Test	p value	Conclusion
	HLB	HR-X	p value			
Diuron	0.91	0.51	0.67	Test t	0.42	Equality
Isoproturon	0.62	0.70	0.28	Test t	0.25	Equality
MIT	0.34	0.71	0.93	Test t	1.8E-09	HR-X > HLB
BIT	0.92	0.54	0.37	Test t	0.92	Equality
CMIT	0.06	0.04		Mann-Whitney	0.01	HR-X > HLB
OIT	0.48	0.53	0.69	Test t	0.82	Equality
DCOIT	0.32	0.46	0.40	Test t	0.17	Equality
BZK C12	0.64	0.72	0.75	Test t	0.18	Equality
BZK C14	0.01	0.99		Mann-Whitney	0.02	HR-X > HLB
BZK C16	0.12	0.34	0.06	Test t	0.66	Equality
Terbutryn	0.22	0.57	0.18	Test t	0.21	Equality
Cybutryn	0.39	0.52	4.8E-04	Mann-Whitney	0.008	HR-X > HLB
Terbuthylazine	0.75	0.45	0.21	Test t	0.02	HR-X > HLB
Carbendazim	0.70	0.03		Mann-Whitney	0.13	Equality
IPBC	0.44	0.56	0.67	Test t	0.25	Equality
Thiabendazole	0.74	0.90	0.10	Test t	0.01	HR-X > HLB
Tebuconazole	0.80	0.97	0.51	Test t	0.92	Equality
Mecoprop	0.50	0.11	0.50	Test t	0.18	Equality

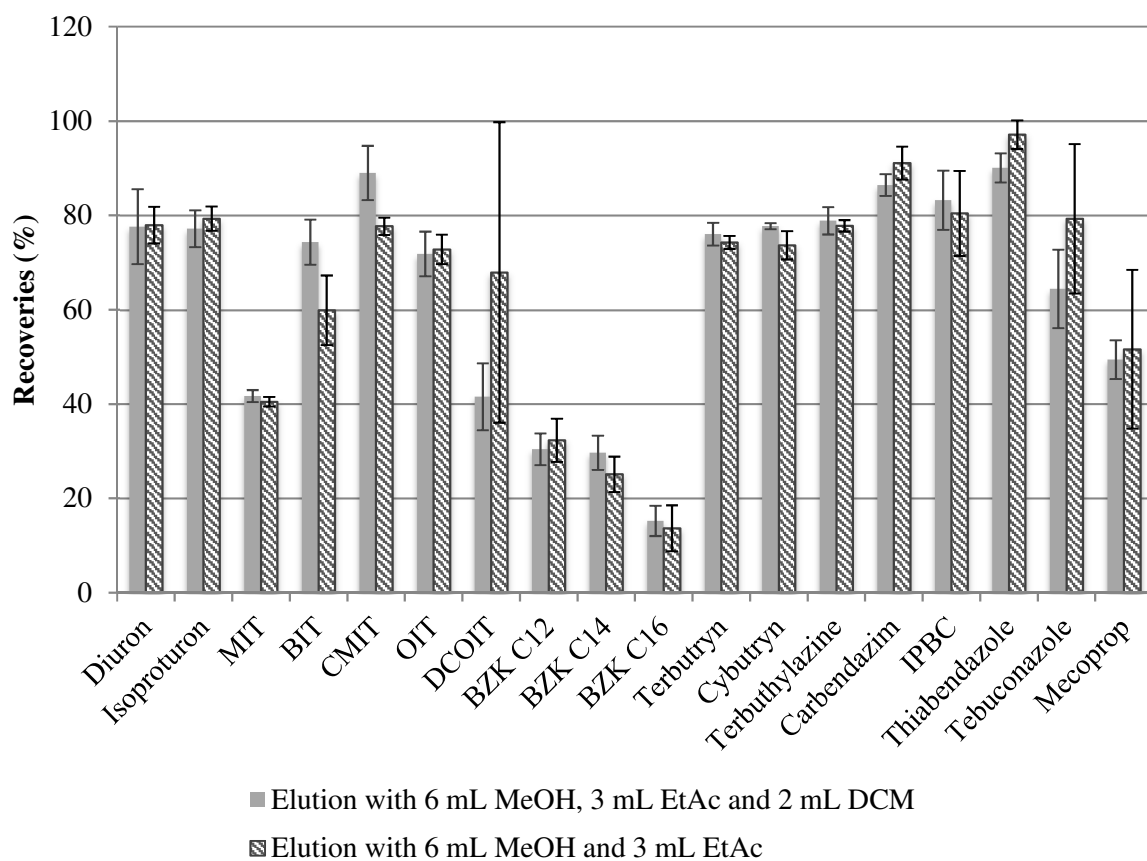


Fig. S6 SPE recoveries obtained with two different elution procedures (100 mL of UP water spiked at 100 ng/L, n=3)

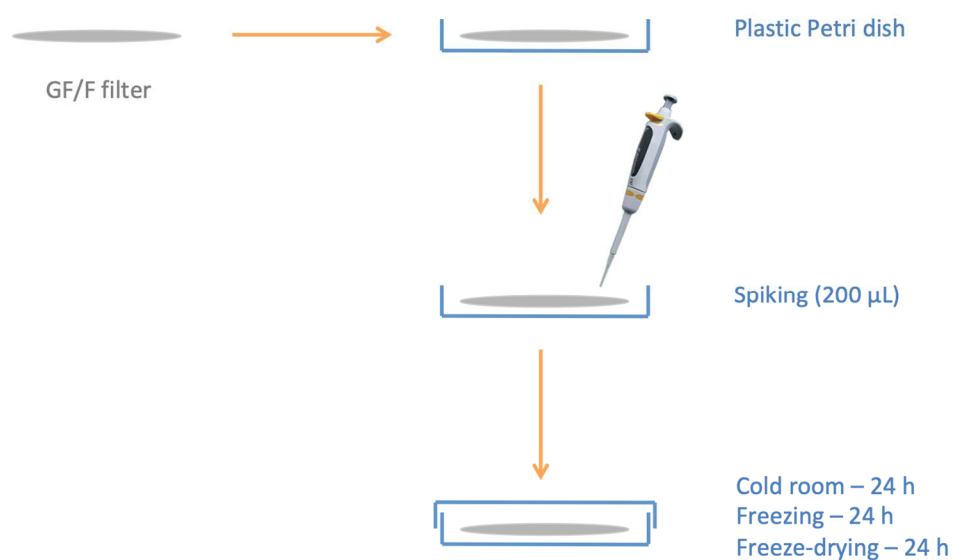


Fig. S7 Spiking procedure for MAE optimizations

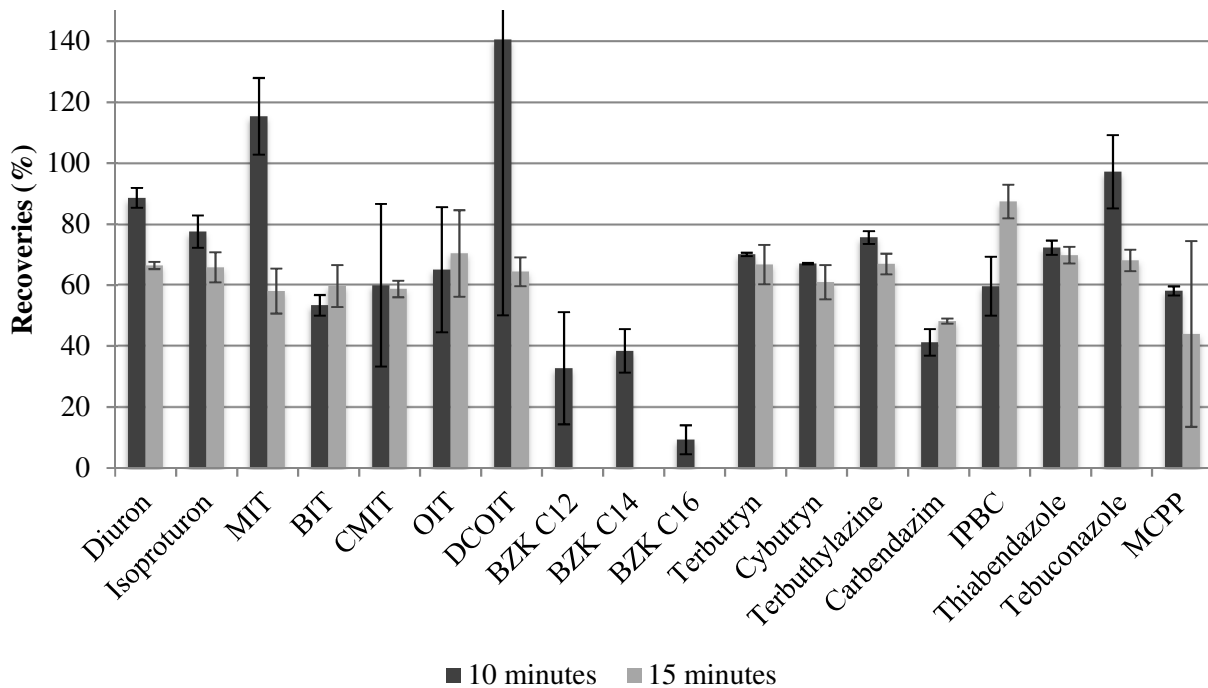


Fig. S8 MAE recoveries of biocides obtained with two different extraction time (extraction at 100°C in MeOH/DCM 60/40 v/v, n=3)

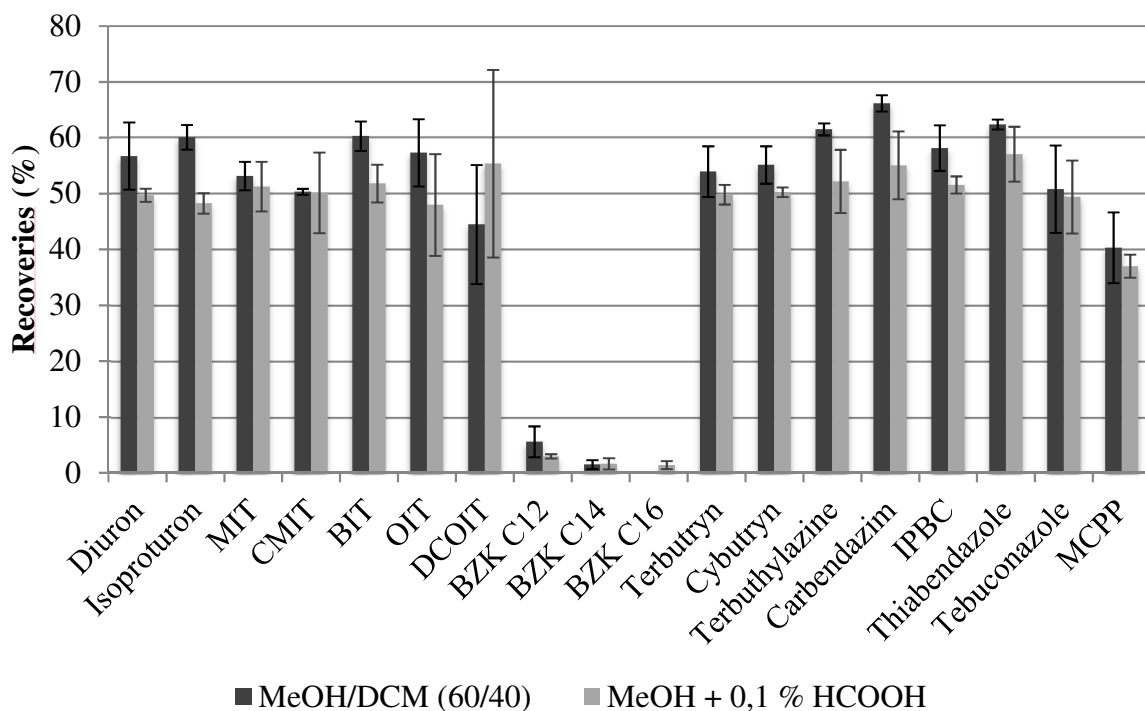


Fig. S9 MAE recoveries of biocides obtained with two different extraction solvents (extraction at 100°C with a temperature plateau of 10 min, n=3)

Table S7 HPLC-MS/MS linearity ranges

Biocides	Linearity range 1				Linearity range 2			
	Concentrations (µg/L)	R ²	slope	intercept	Concentrations (µg/L)	R ²	slope	intercept
Diuron	0.1-50	0.997	2.7E-03	1.1E-03				
Isoproturon	0.05-10	0.999	1.6E-02	-3.4E-04	10-150	0.999	1.6E-02	-2.1E-02
MIT	0.5-50	0.997	4.3E-05	1.3E-05				
BIT	0.05-10	0.998	8.5E-04	-7.0E-05	10-150	0.998	9.7E-04	-1.7E-03
CMIT	1-150	0.998	2.0E-05	-3.0E-05				
OIT	0.05-10	0.999	1.1E-02	2.6E-03	10-150	0.997	1.3E-02	-8.8E-02
DCOIT	0.25-10	0.991	4.0E-02	-4.2E-03	10-150	0.994	9.0E-04	-1.2E-02
BZK C12	1-250	0.998	3.1E-02	-9.9E-02				
BZK C14	1-150	0.987	1.7E-02	-6.1E-02				
BZK C16	1-250	0.996	1.1E-02	-5.6E-02				
Terbutryn	0.05-10	1.000	2.0E-02	-2.0E-04	10-150	0.998	2.1E-02	-4.6E-02
Cybutryn	0.05-10	1.000	2.0E-02	-1.7E-04	10-150	0.999	2.1E-02	-3.6E-02
Terbutylazine	0.05-10	1.000	1.5E-02	-1.4E-04	10-150	0.998	1.5E-02	-2.9E-02
Carbendazim	0.05-10	0.999	1.2E-02	5.7E-03	10-150	0.999	1.1E-02	4.7E-03
IPBC	0.25-10	0.998	6.3E-04	-9.0E-05	10-150	0.997	8.0E-04	-4.0E-03
Thiabendazole	0.05-10	0.999	5.0E-03	-2.1E-04	10-150	0.999	5.0E-03	-7.5E-03
Tebuconazole	0.05-10	0.999	6.1E-03	-1.8E-04	10-150	0.996	8.2E-03	-5.1E-02

Table S8 HPLC-MS/MS repeatability

Biocides	RSDs (%)	
	10 µg/L	75 µg/L
Diuron	6.4	4.4
Isoproturon	2.1	3.9
MIT	7.4	3.7
BIT	4.2	4.4
CMIT	18	5.9
OIT	4.3	3.8
DCOIT	16	13
BZK C12	9.2	6.1
BZK C14	9.3	3.6
BZK C16	7.2	6.5
Terbutryn	6.4	3.9
Cybutryn	6.7	4.5
Terbuthylazine	4.8	3.4
Carbendazim	12	9.7
IPBC	9.4	2.1
Thiabendazole	13	9.3
Tebuconazole	9.2	6.1
Mecoprop	25	24

Table S9 Matrix effects

	Surface water		WWTP effluents		WWTP influents		Stormwater		CSOs	
	D	P	D	P	D	P	D	P	D	P
Isoproturon-d6	-3%	+1%	-4%	-8%	-26%	-3%	-8%	+21%	-12%	-1%
Terbuthylazine-d5	+9%	0%	+9%	-4%	-18%	+2%	-3%	+16%	+5%	-1%
Mecoprop-d3	-33%	-28%	-19%	-31%	-31%	+15%	-32%	+19%	+36%	-2%

Table S10 Limits of detection (LOD) and quantification (LOQ) in the dissolved fraction of urban and surface waters in ng/L

Biocides	Instrumental		Surface water/rain		WWTP effluents		WWTP influents		Stormwater		CSOs	
	LOD (µg/L)	LOQ (µg/L)	LOD (ng/L)	LOQ (ng/L)	LOD (ng/L)	LOQ (ng/L)	LOD (ng/L)	LOQ (ng/L)	LOD (ng/L)	LOQ (ng/L)	LOD (ng/L)	LOQ (ng/L)
Diuron	0.05	0.25	0.27	0.66	0.50	1.3	1.2	3.1	0.76	1.9	1.3	3.2
Isoproturon	0.05	0.05	0.11	0.11	0.21	2.1	0.44	0.44	0.34	0.34	0.56	0.56
MIT	0.25	0.50	5.0	9.9	9.2	18	13	26	6.1	12	9.7	19
BIT	0.10	0.75	0.28	2.1	0.58	4.3	0.98	7.3	0.65	4.9	1.4	10
CMIT	0.50	2.5	1.6	8.0	3.14	16	11	54	4.5	23	7.6	38
OIT	0.10	0.25	0.21	0.52	0.49	1.2	1.3	3.2	0.93	2.31	1.3	3.3
DCOIT	0.05	0.50	0.04	0.45	0.11	1.1	0.36	3.6	0.23	2.32	0.27	2.7
BZK C12	0.75	2.5	5.0	17	8.1	27	22	73	18	59	22	73
BZK C14	0.75	2.5	4.7	16	11	37	37	123	15	50	25	84
BZK C16	0.75	2.5	3.6	12	7.5	25	20	68	57	190	110	360
Terbutryn	0.05	0.05	0.13	0.13	0.23	0.23	0.51	0.51	0.43	0.43	0.63	0.63
Cybutryn	0.05	0.05	0.14	0.14	0.27	0.27	0.62	0.62	0.48	0.48	0.67	0.67
Terbuthylazine	0.05	0.05	0.11	0.11	0.23	0.23	0.52	0.52	0.44	0.44	0.67	0.67
Carbendazim	0.05	0.05	0.17	0.17	0.31	0.31	0.61	0.61	0.44	0.44	0.72	0.72
IPBC	0.50	1.0	1.2	2.4	2.2	4.3	5.0	10	3.2	6.3	5.1	10
Thiabendazole	0.05	0.05	0.15	0.15	0.27	0.27	0.58	0.58	0.42	0.42	0.69	0.69
Tebuconazole	0.05	0.05	0.08	0.08	0.18	0.18	0.38	0.38	0.38	0.38	0.55	0.55
Mecoprop	0.75	1.0	1.5	2.0	3.1	4.1	6.8	9.1	2.9	3.9	7.0	9.3

Table S11 Limits of detection (LOD) and quantification (LOQ) (min-max) in the particulate fraction of urban and surface waters in ng/g (dry weight)

	Surface water		WWTP effluents		WWTP influents		Stormwater		CSOs	
	LOD (ng/g)	LOQ (ng/g)	LOD (ng/g)	LOQ (ng/g)	LOD (ng/g)	LOQ (ng/g)	LOD (ng/g)	LOQ (ng/g)	LOD (ng/g)	LOQ (ng/g)
Mass of particles (mg)	8,5-103		4,3-11		54-84		28-84		27-130	
Diuron	1.0-1.2	2.4-30	9.0-23	23-58	1.0-2.0	3.0-5.0	1.0-4.0	3.0-9.0	0.8-3.7	1.9-9.2
Isoproturon	0.5-5.9	0.5-5.9	5.0-12	5.0-12	1.0	1.0	1.0-2.0	1.0-2.0	0.4-1.8	0.4-1.8
MIT	2.4-30	4.9-59	23-58	45-120	3.0-5.0	6.0-9.0	3.0-9.0	6.0-18	1.9-9.2	3.9-18
BIT	1.0-12	7.3-89	9.0-23	68-180	1.0-2.0	9.0-14	1.0-4.0	9.0-27	0.8-3.7	5.8-27
CMIT	4.9-59	24-300	45-120	230-580	6.0-9.0	30-47	6.0-18	30-89	3.9-18	19-92
OIT	1.0-12	2.4-30	9.0-23	23-58	1.0-2.0	3.0-5.0	1.0-4.0	3.0-9.0	0.8-3.7	1.9-9.2
DCOIT	0.5-5.9	4.9-59	5.0-12	45-120	1.0	6.0-9.0	1.0-2.0	6.0-18	0.4-1.8	3.9-18
BZK C12	7-90	20-300	70-200	200-600	9-10	30-50	9-30	30-90	6-30	20-90
BZK C14	7-90	20-300	70-200	200-600	9-10	30-50	9-30	30-90	6-30	20-90
BZK C16	7-90	20-300	70-200	200-600	9-10	30-50	9-30	30-90	6-30	20-90
Terbutryn	1.0-12	0.5-59	10-24	5.0-12	2.0	1.0	2.0-4.0	1.0-2.0	0.8-3.6	0.4-18
Cybutryn	0.5-5.9	0.5-59	5.0-12	5.0-12	1.0	1.0	1.0-2.0	1.0-2.0	0.4-1.8	0.4-18
Terbuthylazine	0.5-5.9	0.5-59	5.0-12	5.0-12	1.0	1.0	1.0-2.0	1.0-2.0	0.4-1.8	0.4-18
Carbendazim	0.5-5.9	0.5-59	5.0-12	5.0-12	1.0	1.0	1.0-2.0	1.0-2.0	0.4-1.8	0.4-18
IPBC	4.9-59	9.7-120	45-120	90-230	6.0-9.0	12-19	6.0-18	12-35	3.9-18	7.7-37
Thiabendazole	0.5-5.9	0.5-5.9	5.0-12	5.0-12	1.0	1.0	1.0-2.0	1.0-2.0	0.4-1.8	0.4-18
Tebuconazole	1.0-12	0.5-5.9	10-24	5.0-12	2.0	1.0	2.0-4.0	1.0-2.0	0.8-3.6	0.4-18
Mecoprop	7.3-89	9.7-120	68-180	90-230	9.0-14	12-19	9.0-27	12-35	3.9-18	7.7-37

Table S12 Total concentrations (dissolved + particulate fractions) of biocides in different urban waters and surface waters in ng/L

Sampling campaign	Total atmospheric fallout (ng/L)			Surface waters (ng/L)			WWTP effluents (ng/L)			WWTP influents (ng/L)			CSOs (ng/L)			Stormwater (ng/L)		
	1	2	3	1	2	3	1	2	3	1	2	3	1	2	3	1	2	3
Diuron	1.2	0.8	<LOQ	20	3.5	2.8	38	11	31	35	3.4	23	910	150	200	32	47	17
Isoproturon	0.04	0.	0.02	1.9	0.5	<LOQ	0.9	0.8	<LOQ	1.1	1.1	<LOQ	8.4	1.5	2.0	1.0	3.1	2.8
MIT	39	110	61	14	17	<LOQ	110	65	39	860	430	350	85	60	8.9	170	76	96
BIT	2.7	<LOQ	<LOQ	2.4	<LOQ	2.5	55	48	26	450	660	300	6.2	18	34	200	43	39
CMIT	57	30	5.6	<LOD	<LOD	<LOQ	<LOQ	<LOQ	<LOQ	<LOD	<LOD	<LOQ	40	130	30	60	21	47
OIT	1.6	3.6	1.7	<LOQ	<LOQ	<LOQ	1.4	<LOD	<LOD	7.4	3.2	1.1	66	22	34	11	5.9	8.1
DCOIT	0.9	1.4	1.1	1.6	1.5	1.7	1.3	4.6	3.3	6.6	<LOD	10	-	7.8	6.0	<LOD	<LOD	70
BZK C12	90	40	100	200	40	1	100	600	300	500	700	2000	1000	6000	5000	5000	20000	10000
BZK C14	70	30	20	70	60	0.5	3	300	90	20	500	300	200	5000	4000	2000	300	4000
BZK C16	20	0.3	<LOQ	40	40	0.2	1	80	<LOQ	4	200	4	200	700	200	80	300	400
Terbutryn	0.1	1.0	1.1	2.8	1.2	1.1	16	11	12	11	6.2	<LOQ	79	61	55	45	30	17
Cybutryn	<LOQ	<LOD	<LOD	<LOQ	0.2	<LOQ	<LOD	<LOQ	<LOQ	<LOD	<LOD	<LOD	4.1	<LOD	<LOD	3.2	0.2	<LOQ
Terbuthylazine	0.03	38	0.01	52	3.8	2.5	<LOQ	2.2	1.1	<LOQ	2.1	2.1	11	0.2	1.3	17	15	21
Carbendazim	0.1	3.5	0.03	8.4	3.7	7.4	3.5	9.8	22	<LOQ	12	36	180	66	54	42	51	49
IPBC	4.2	13	5.4	1.8	0.7	1.0	1.5	2.4	1.7	<LOQ	3.9	5.1	<LOQ	<LOQ	<LOQ	4.2	3.6	24
Thiabendazole	0.1	0.04	0.1	1.1	0.9	0.01	19	13	14	10	14	3.2	13	1.5	1.6	11	11	7.4
Tebuconazole	0.7	10	0.7	160	6.3	2.2	5.9	6.4	4.2	3.2	9.0	1.0	50	34	33	21	27	31
Mecoprop	<LOD	0.1	<LOQ	22	11	<LOD	8.9	24	<LOD	<LOD	<LOD	<LOD	147	85	16	190	840	470

Table S13 Biocide proportions (%) in the particulate fractions

Sampling campaign	Rain water			Surface waters			WWTP effluents			WWTP influents			CSOs			Stormwater		
	1	2	3	1	2	3	1	2	3	1	2	3	1	2	3	1	2	3
Diuron	5	8	-	1	2	2	0	1	0	20	7	2	1	1	1	1	1	5
Isoproturon	28	12	14	5	3	-	1	3		9	4	-	7	14	69	30	9	10
MIT	2	1	1	100	18	-	0	0	0	0	0	0	8	16	100	8	15	11
BIT	3	-		100	-	100	2	2	1	10	2	7	100	100	21	31	100	100
CMIT	24	28	0	-	-	-	-	-	-	-	-	-	8	7	0	19	30	15
OIT	4	2	4	-	-	-	4	-	-	45	7	43	17	8	10	28	21	19
DCOIT	12	5	0	0	0	0	0	0	0	13		0	-	0	0	-	-	0
BZK C12	19	22	14	80	1	12	2	28	6	65	13	3	43	0	14	2	15	27
BZK C14	1	26	5	12	1	6	12	12	6	60	5	9	6	0	9	1	23	23
BZK C16	3	5	-	6	2	3	100	2		100	1	100	2	0	5	5	1	1
Terbutryn	29	1	3	7	1	48	0	0	0	1	1	-	4	1	3	2	2	5
Cybutryn	-	-	-	-	10	-	-	-	-	-	-	-	2	-	-	6	44	-
Terbuthylazine	24	0	9	1	1	0	-	1	2	-	2	4	2	37	80	2	2	3
Carbendazim	33	2	16	3	0	0	0	0	0	-	0	0	4	2	3	3	2	10
IPBC	27	0	5	100	100	100	100	100	100	-	100	100	-	-	-	100	100	18
Thiabendazole	34	100	25	4	2	100	0	0	0	4	2	15	22	81	82	8	6	19
Tebuconazole	18	3	9	5	5	10	0	3	0	3	1	8	11	4	7	8	7	14
Mecoprop	-	100	-	0	0	-	0	0	-	-	-	-	1	1	10	1	1	0

- indicates that proportions were not calculated (biocides not quantified in any fraction)