



**HAL**  
open science

## Macro and microplastics in stormwater and combined sewer overflows in Paris megacity

Robin Treilles, Johnny Gasperi, Saad Mohamed, Alain Rabier, Jérôme Breton, Vincent Rocher, Sabrina Guerin, Bruno Tassin

### ► To cite this version:

Robin Treilles, Johnny Gasperi, Saad Mohamed, Alain Rabier, Jérôme Breton, et al.. Macro and microplastics in stormwater and combined sewer overflows in Paris megacity. Novatech 2019, Jul 2019, Lyon, France. hal-02170901

**HAL Id: hal-02170901**

**<https://enpc.hal.science/hal-02170901v1>**

Submitted on 2 Jul 2019

**HAL** is a multi-disciplinary open access archive for the deposit and dissemination of scientific research documents, whether they are published or not. The documents may come from teaching and research institutions in France or abroad, or from public or private research centers.

L'archive ouverte pluridisciplinaire **HAL**, est destinée au dépôt et à la diffusion de documents scientifiques de niveau recherche, publiés ou non, émanant des établissements d'enseignement et de recherche français ou étrangers, des laboratoires publics ou privés.



# Macro and microplastics in stormwater and combined sewer overflows in Paris megacity

## Macro et microplastiques dans les eaux pluviales et dans les rejets urbains de temps de pluie de l'agglomération parisienne

Robin TREILLES\*, Johnny GASPERI, Mohamed SAAD, Alain RABIER, Jérôme BRETON, Vincent ROCHER, Sabrina GUERIN, Bruno TASSIN

\*robin.treilles@enpc.fr

### Introduction

Plastic fluxes issued from stormwater and combined sewer overflows (CSOs) are poorly documented. To add more data on this topic, macro and microplastic concentrations are estimated (i) in runoff waters at the outlet of a 200 ha catchment, situated in Sucy-en-Brie (Paris suburb) and (ii) in CSO discharges at the SIAAP Clichy outfall.

### Sampling sites and methods

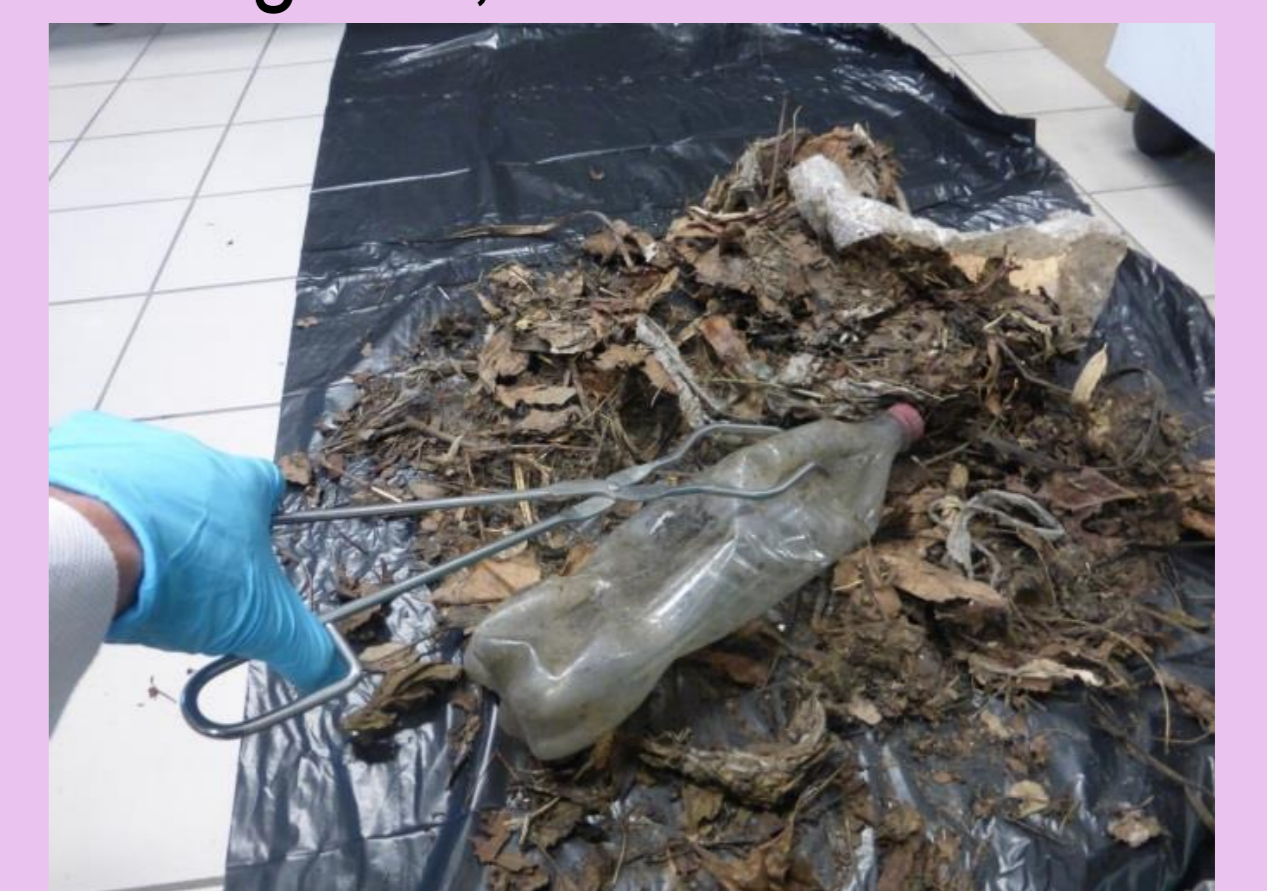
#### Combined sewer overflows at Clichy outfall (SIAAP)

Macro and microplastics are sampled using nets with different mesh sizes (1 cm, 300  $\mu$ m, 80  $\mu$ m)



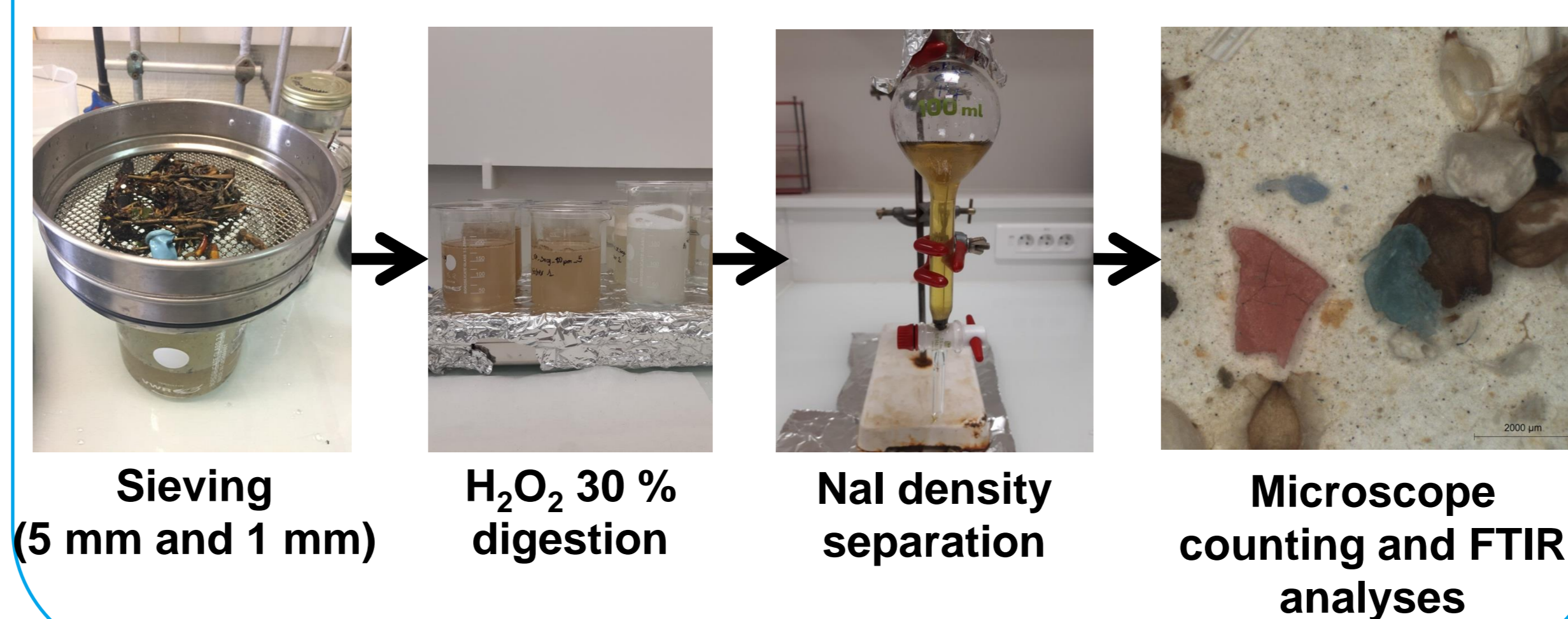
#### Runoff water at the Sucy-en-Brie catchment outflow (DSEA Val de Marne)

Debris are collected from two grid refusals (6 and 1 cm). They are weighted, dried and sorted.

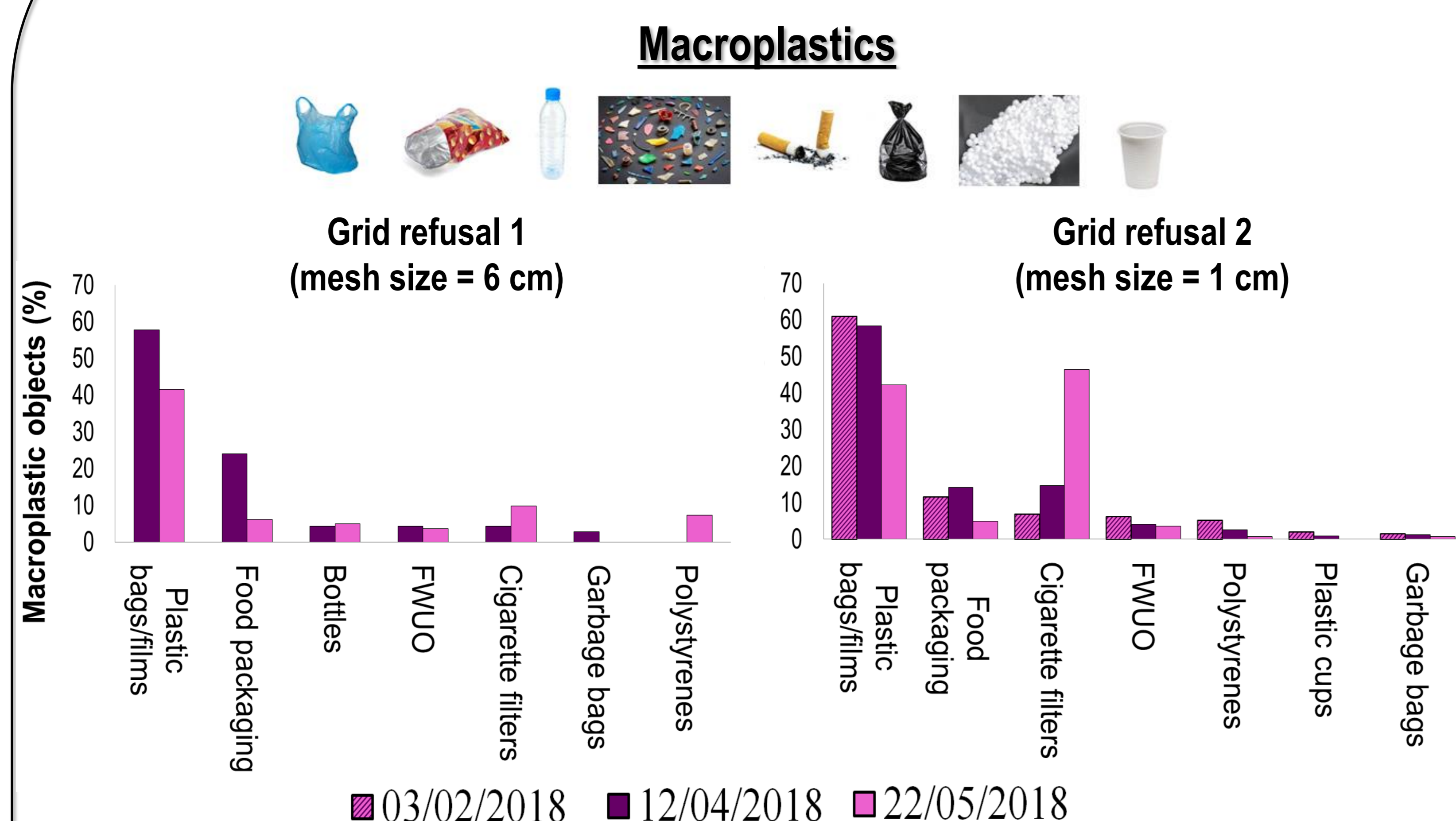


100L of runoff water are collected upstream of the grid refusals during rain events for microplastic analysis. This water is then filtered with a 80  $\mu$ m net and microplastics are analyzed.

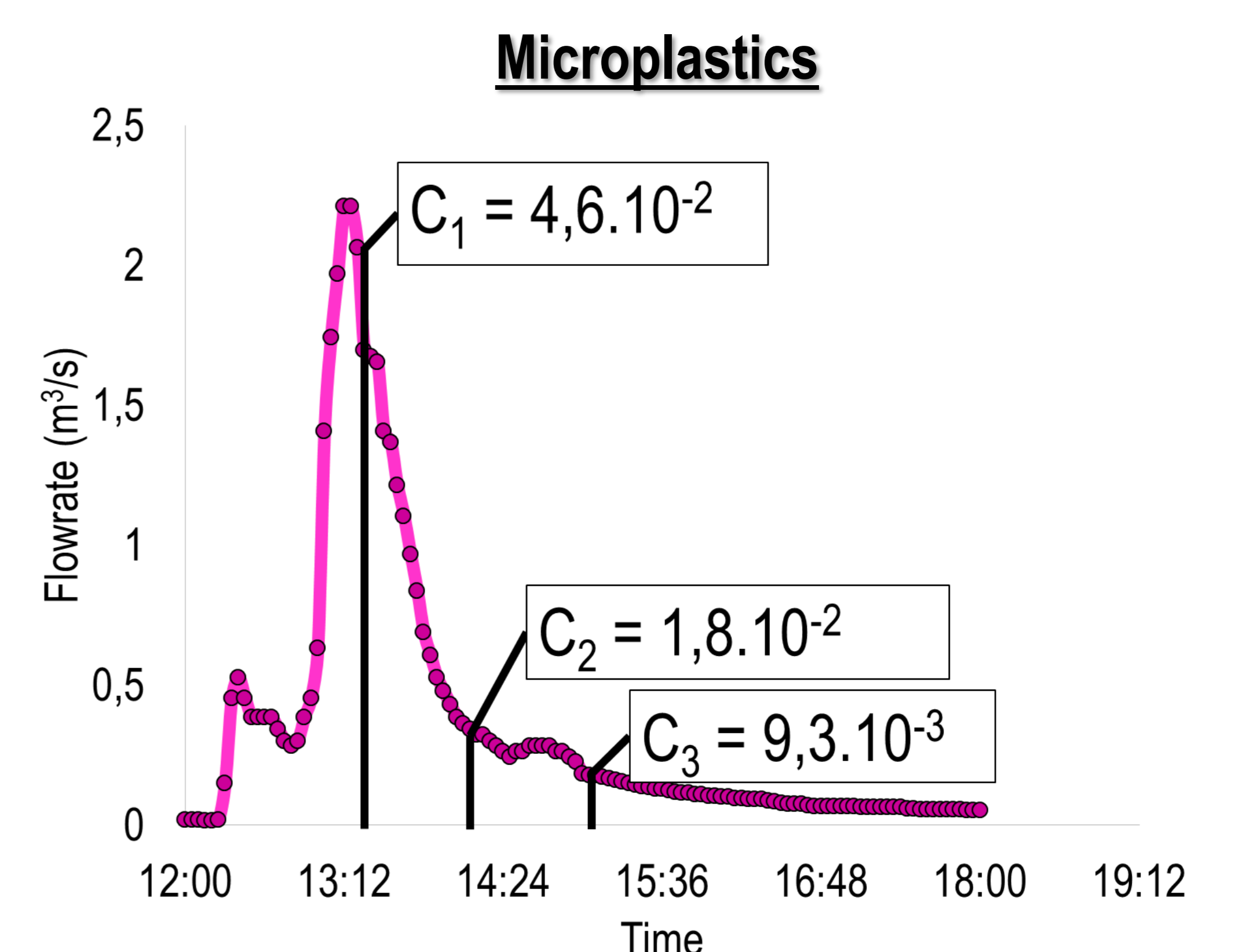
#### How to extract and analyse microplastics ?



### Results and discussions



- Eight plastic waste categories correspond to 95 % of all the plastics of Sucy-en-Brie (FWUO : Fragments With Unknown Origin).
- Due to the different mesh sizes, a different waste repartition is observed depending on the grid refusal.
- Plastic waste in stormwater  $\sim 3.10^{-5}$  kg/m<sup>3</sup>



- 1-5 mm microplastic concentrations (fragments/L) and flowrate as a function of time (06/11/18 rain event, Sucy-en-Brie).
- Previous works found microplastic concentrations between 2 and 29 fragments/L (Dris et al., 2018) for the same catchment.
- Lower values could be explained because smaller microplastics are not included up to now (1  $\mu$ m to 1 mm).