



**HAL**  
open science

## The mechanisms of plaster drying

Mamadou Diaga Seck, M van Landeghem, P Faure, Stéphane Rodts, R Combes, P Cavalie, E Keita, Philippe Coussot

► **To cite this version:**

Mamadou Diaga Seck, M van Landeghem, P Faure, Stéphane Rodts, R Combes, et al.. The mechanisms of plaster drying. *Journal of Materials Science*, 2015, 50 (6), pp.2491-2501. 10.1007/s10853-014-8807-x . hal-01172479

**HAL Id: hal-01172479**

**<https://enpc.hal.science/hal-01172479>**

Submitted on 7 Jul 2015

**HAL** is a multi-disciplinary open access archive for the deposit and dissemination of scientific research documents, whether they are published or not. The documents may come from teaching and research institutions in France or abroad, or from public or private research centers.

L'archive ouverte pluridisciplinaire **HAL**, est destinée au dépôt et à la diffusion de documents scientifiques de niveau recherche, publiés ou non, émanant des établissements d'enseignement et de recherche français ou étrangers, des laboratoires publics ou privés.

# The mechanisms of plaster drying

M. D. Seck<sup>a,b</sup>, M. Van Landeghem<sup>b</sup>, P. Faure<sup>a</sup>, S. Rodts<sup>a</sup>, R. Combes<sup>c</sup>, P. Cavalie<sup>b</sup>, E. Keita<sup>a</sup>, P. Coussot<sup>a</sup>

<sup>a</sup> Université Paris-Est, Laboratoire Navier, ENPC-IFSTTAR-CNRS, Champs-sur-Marne, France

<sup>b</sup> Saint-Gobain Recherche, Aubervilliers, France

<sup>c</sup> Laboratoire des Géomatériaux, Université de Marne La Vallée, Marne la Vallée, France

**Abstract:** We show that the drying rate of plaster pastes is significantly lower than that expected for a pure liquid evaporating from a simple homogeneous porous medium. This effect is enhanced by the air flow velocity and the initial solid/water ratio. Further tests under various conditions and with the help of additional techniques (MRI, ESEM, Microtomography) for measuring the drying rate and local characteristics (water content, porosity) prove that this effect is due to the crystallization of gypsum ions below the sample free surface, which creates a dry region and decreases the drying rate by increasing the length of the path the vapor has to follow before reaching the free surface.

## 1. Introduction

To obtain the plasterboards so useful for modern constructions, there are two important phenomena that must take place: hydration, through which plaster paste passes from a pasty state to a solid state, and drying, through which the excess of the mixing water is removed. The solid plaster is obtained from the hydration of the hemihydrate ( $\text{CaSO}_4 \cdot 1/2\text{H}_2\text{O}$ ) [1-4], which can be briefly described as the dissolution of the hemihydrate followed by the precipitation of gypsum crystals. This chemical reaction basically takes about 40 min without accelerators [5]. Since the stoichiometric water-to-plaster ratio is 0.186 whereas the ratio generally used in gypsum industry lies between 0.6 and 1, i.e. it is much higher than 0.186, there is a significant excess of water at the end of the reaction. This excess of water must be removed from the material, an operation which requires a lot of energy. Understanding the drying processes in plaster pastes should contribute to develop more efficient drying techniques or procedures. In manufacture, the residual water is removed by heating in a dry oven, by exposure to a convective air flow [6] or by the combination of both of these technics. Here we will focus on the case of convective air flow.

The drying characteristics of plasters is not very much documented. Existing knowledge essentially concerns materials already in solid state which are imbibed then dried and tends to suggest [7] that as long as pure water is used such materials exhibit drying properties close to usual simple homogeneous porous media. Let us here recall the general scheme concerning drying of simple homogeneous porous media [8-9] can serve as a reference in order to appreciate and even understand the origins of the possible differences observed with real materials. During drying simple materials exhibit a first regime, called the CRP (Constant Rate Period), during which the drying rate is approximately constant. This period may last until the saturation has reached values as low as 20 or 10 %. During this period the saturation remains uniform in the material and the evaporation occurs from the upper liquid films very close to the free surface of the sample, while the liquid is drained by capillary effects

through the film network throughout the sample. Then the drying rate starts to decrease significantly, this is the Falling Rate Period (FRP). In that regime the liquid flow driven by basic capillary effects is unable to provide liquid at a sufficient rate at the sample free surface, so that a thin dry region forms in this region which lowers the drying rate (since now the vapor has to diffuse through this region before reaching the sample free surface). The size of this dry region slightly increases during this regime. Finally a last regime takes place when the dry region now increases widely because there is no longer any possibility for the liquid to be drained towards the sample free surface. Besides the evolutions of the moisture and temperature distribution in a heated plaster have been studied in details with the help of NMR technique [10] but it is not clear how these results can help understanding the drying of plaster under a convective flow at ambient temperature.

A specific aspect has been studied in more details in recent years, namely the transport of salts during drying of solid plaster samples. It has been shown that salts are transported towards the free surface and then can either crystallize inside the plaster or move to the substrate [7]. It was also suggested that this salt crystallisation leads to the formation of a structure inside the plaster, whose characteristics depends on the drying rate and in turn impacts the drying rate [11]. The impact of transport and crystallization of salts (sometimes leading to efflorescence) on the drying rate has also been observed with various other porous media: glass beads [12], fired-clay [13], stones [14], .

As far as we know the drying characteristics of plaster pastes just after their preparation has not been studied so far whereas it is a critical step of the process of plasterboard production. Previous studies concerning plaster properties during its preparation focused on the structure evolution in time, in particular with the help of NMR, showing that the pore distribution evolves as a result of hydration [15-17]. It is likely that some of the above mentioned effects play a role on the evolution in time of the drying rate and the water distribution, but the relative importance of these effects has still to be explored.

Here we focus on the drying characteristics (i.e. the drying rate evolution in time) just after the material preparation. We first describe our materials and methods (Section 2). Then we look at the specific characteristics of the drying curves as a function of different experimental conditions or material properties (see Section 3). Considering the original trends exhibited by these curves with regards to simple porous systems we then look at the evolution of the local characteristics (water content, structure) inside the materials with the help of Magnetic Resonance Imaging, Electron Microscopy and X-Ray Micro-tomography (see Section 4). We finally conclude on the physical processes explaining the specific drying characteristics of such materials (see Section 5).

## 2. Materials and methods

### 2.1 Materials

We used a commercial  $\alpha$ -plaster (*Saint-Gobain Recherche*, France) **with a purity higher than 95% wt, a specific surface of 7500 g/m<sup>2</sup> (measured with the Blaine air permeability test), and a grain size between 10 and 20  $\mu\text{m}$ . The impurities are mainly clay (colloidal) particles.**

Our plaster paste samples are prepared according to a well-defined mixing protocol [17]. The plaster powder is sprinkled on water for 30 seconds. The mixture is then left at rest for 1 minute to get a good contact between water and solid particles, and hand-mixed for 30 s by helical movements (**in order to ensure a homogeneous mixing, in particular avoid any stagnation points**), then left at rest and mixed again for 30 s. **Note that the exact mixing process may have an impact on the final structure but this aspect is out of the scope of this study which focuses on a given mixing process.** The initial water to powder ratio (w/p), i.e. the ratio of the mass of water to the mass of powder was varied in the range [0.5-0.9] in order to show up an eventual impact of the initial water content. We also tested the case w/p=1 but a significant sedimentation was observed at the end of preparation so that we cannot consider that we effectively have this concentration in the sample. The plaster pastes were finally poured into a cylindrical container (diameter and height either equal to 54 and 12 mm (cylinder A) or 35 and 40 mm (cylinder B)) just at the end of the mixing protocol just before (i.e. initial time) and immediately submitted to air flow.

We also carried out drying tests with bead packings filled with distilled water. Glass beads were purchased from *CVP Abrasif & Broyage* (France) with a diameter in the range: 45-90  $\mu\text{m}$ . These glass beads were used without specific cleaning. Their grain size distribution in this range was shown to be essentially a peak around a mean value ( $\approx 65 \mu\text{m}$ ). The water was mixed in a container with a certain amount of beads until obtaining a saturated viscous paste. Then this paste was poured in the vessel as above, with a slight vibration until filling the vessel. The sample was then vibrated in order to further compact the beads and remove air bubbles.

## 2.2 Drying tests

To dry the samples a stream of dehydrated air (relative humidity  $< 1\%$ ) at ambient temperature ( $23^\circ\text{C} \pm 1$ ) was blown through a long channel to get a homogeneous velocity before reaching the sample. The air flux was imposed through this rectangular conduit of  $60 \times 3 \text{ mm}^2$  section and the sample free surface was set up through a hole of one large channel side in the continuity of the channel wall. **Thus only the top free surface of the sample was exposed to air flow, and evaporation could not take place from the container walls.** The velocity could be changed by varying the pressure drop and measured with a flowmeter. At the same time the sample is set up on a balance and its mass is followed in time and recorded on a computer. The time interval between each measurement is 5 min.

To analyse properly such experiments it is critical to take into account that just after sample preparation both hydration and drying processes start to occur. This implies that a part of water is lost through chemical reaction and the solid porous structure evolves in time. In order to follow strictly the evaporated mass of water we consider the current mass (at a time  $t$  after the experiment start up) loss from the initial time:  $\Delta M(t)$ . Moreover we computed the apparent current saturation  $\Phi(t)$  as  $(\Delta M_\infty - \Delta M(t))/\Delta M_\infty$  where  $\Delta M_\infty$  is the maximum mass loss obtained after complete drying, which was measured after an additional drying, following the end of each test, during one day at  $45^\circ\text{C}$ . In the absence of hydration effects  $\Phi$  would be the usual effective saturation, i.e. the ratio of water to pore volumes. We will see below that this is the case at a relatively short time after the beginning of drying. As a consequence in the following we will simply describe this as *the* saturation.

In the present work we will particularly study the rate of drying, which can be related to the time derivative of the saturation [8]. In practice, computing  $d\Phi(t)/dt$  from mass vs time data is not so straightforward because of the data scattering at different time scales. In order to solve this problem we first smoothed the saturation data by mean of a moving time average [18] on three data points (corresponding to fifteen minutes of measurements). This gives us results with an uncertainty around 15%. The finite derivative of these data with respect to time provides the current drying rate but the resulting scattering is again smoothed by a moving time average on three data.

In fact all our data will be represented in terms of the saturation as a function of the “rescaled time”, i.e. the time divided by the evaporable water mass ( $\Delta M_\infty$ ). This representation allows a relevant comparison of different drying procedures, in particular two different systems drying at the same constant rate would exhibit the same saturation vs rescaled time curve whatever their evaporable water mass. Moreover it makes it possible to remove, for two a priori similar tests, the additional fluctuation due to slight differences in the effective water volume. The differences we observe nevertheless after this rescaling can finally be regarded as reflecting a change in the drying process. As a consequence we will define the *drying rate* as  $\Delta M_\infty d\Phi(t)/dt$ .

### 2.3 NMR measurements

The NMR experiments were performed using a Bruker MINISPEC spectrometer, operating at a proton resonance frequency of 20 MHz at 0.5 T. The temperature within the NMR apparatus was set to 25 °C. The transverse relaxation  $T_2$  decays were performed thanks to the Carr-Purcell-Meiboom-Gill (CPMG) sequence. Measurements are done with a recycle delay of 2 s, with 8 scans, with 2000 Pi pulses and pulse separation  $TE/2 = 250 \mu\text{s}$ . The acquisition time is about 5 minutes. The relaxation time distributions were extracted using a home-made numerical Laplace inversion algorithm [19]. For these tests the plaster paste was poured into a 10 x10 mm (diameter x height) glass tube just at the end of the mixing protocol, then NMR acquisition starts. **Each NMR acquisition gives direct information on the quantity of mobile water inside the sample and the  $T_2$  distribution. Thus this is a straightforward to follow the progress of a chemical reaction in a sample.**

### 2.4 MRI measurements

MRI measurements are a set of non-destructive measurements in order to follow in time the spatial distribution of moisture in our drying plaster. To induce drying inside the MRI coil a home-built installation was inserted in the magnet, allowing a dry air (relative humidity < 1%) at ambient temperature (25°C) to be blown upon the 35 x 40 mm cylindrical sample, while MRI measurements were performed. The whole set-up is inserted vertically in the channel of a vertical proton MRI (Magnetic Resonance Imaging) system (Avance 24/80 DBX by Bruker, 0.5T superconducting magnet by Oxford, 20cm inner diameter). The distribution of apparent water along the sample axis was measured using a one-dimensional double spin-echo sequence (two first echoes of the so-called Carr-Purcell-Meibom-Gill sequence [20-21] with exponential extrapolation to compensate spin-spin relaxation). Each measured value of this distribution corresponds to the total amount of water in a thin cross-sectional layer situated at a given position along the sample vertical axis.

## 2.5 SEM imaging

For SEM imaging, we used an environmental scanning electron microscope (Electroscan E3) which provides an image of high spatial resolution. The advantage of ESEM with respect to conventional SEM is the possibility to analyse our samples without any prior preparation possibly altering some properties of the material and without high vacuum. It consists, briefly, of generating an electron beam by an electron cathode and electromagnetic lenses and finally swept it across the surface of the observed sample. Then the electronic signal generated from the sample is collected with the help of a pole piece (5 cm diameter) and a conical detector situated above the sample. The amplification of the electronic signal is done by the presence of water molecules in between the sample and the conical detector. The detected signal is principally constituted of the secondary electrons which gives a good topographic contrast. From now on we are able to visualize or to record the images. The resolution we can get from this type of measurement is less than 5 nm.

## 2.6 X-ray microtomography imaging

The X-ray micro-tomography is a nondestructive technique to characterize material microstructure in three dimensions. It is suited for non-destructively imaging structures with features ranging from few microns to few millimeters thanks to the large penetration depth of x-ray. X-ray absorption varies between materials and provides contrast on images between elements. The grey levels of each projection are linked up to the absorption coefficient and to the thickness of the object. The 3D volumes of objects are reconstructed, via a reconstruction algorithm, from a serie of 2D projections collected at various angular position. Interior of the object can then be sliced numerically. This 3D imaging gives us a great understanding of the 3D structure and morphology of our material. For our measurements we used an easyTom from RxSolutions. It is equipped with an X-ray microfocus source with a spot size of 5  $\mu\text{m}$ . The samples are reshaped on a 10 mm diameter cylinder and 5 to 10 millimeters are imaged in the z-direction. The volume element is a cube of 5.75  $\mu\text{m}$  edge.

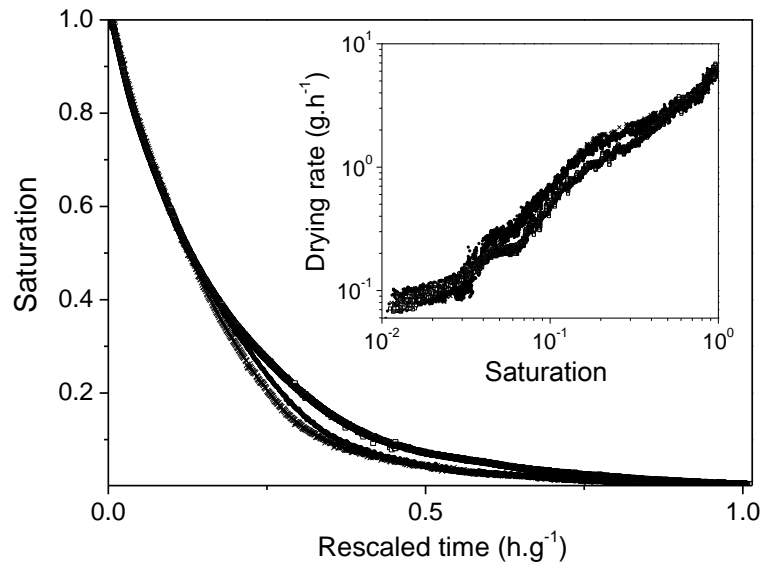
# 3. Results and discussion

## 3.1 General drying characteristics

A typical drying curve, i.e. saturation vs time data, obtained for a plaster paste under our experimental conditions is shown in Figure 1, along with the drying rate (see inset of Figure 1). The saturation decrease is fast at the beginning then it progressively slows down, as illustrated by the computed drying rate which continuously decreases. The data obtained from different samples prepared then dried under the same conditions are reproducible within 20% on the water mass loss. The uncertainty on the drying rate is finally also around 20% (see inset of Figure 1).

Note that direct inspection of our samples at the end of the drying tests showed that the free surface did not evolve in time, i.e. no efflorescence could be observed.

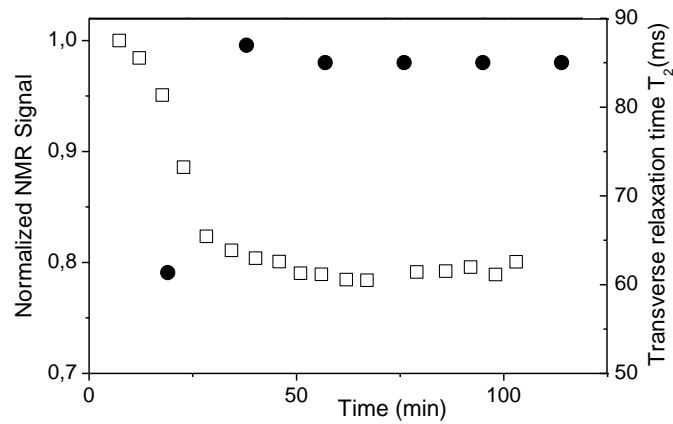
In the following paragraphs we will review the impact of several parameters on which the drying rate may depend, according to what we know from ideal porous media [8].



**Figure 1:** Drying tests with plaster paste samples with the same powder ratio ( $w/p=0.8$ ) (air flow velocity: 6.1 m/s; cylinder A): water saturation as a function of rescaled time (from top to bottom: squares, circles and crosses). The inset shows the corresponding drying rate as a function of saturation.

#### *Impact of hydration effects*

Since we are dealing with materials in which a hydration reaction occurs it is natural to first suspect this reaction to play a role in the delaying drying effect. To test this assumption we performed NMR measurements from which we get the NMR signal and the  $T_2$  distribution in time (see Figure 2), on a plaster paste sample set up in a close container so that only hydration effects can take place. We can see that the NMR signal (see Figure 2a) decreases to about 20% of its initial value during the first forty minutes of a test and then remains constant. Since this signal is directly proportional to the quantity of mobile water [5] this result means that the hydration reaction consumes about 20% of water (which is consistent with the stoichiometric ratio), which then behaves as a solid, and this process lasts about 40 min. Since in our tests the evaporation of most of the water contained in the samples generally takes tens of hours hydration effects cannot play a major role in the liquid water variations during this process.



**Figure 2:** NMR signal (normalized by its first value) (squares) and relaxation time ( $T_2$ ) (circles) as a function of time in a plaster paste ( $w/p=0.8$ ) during hydration.

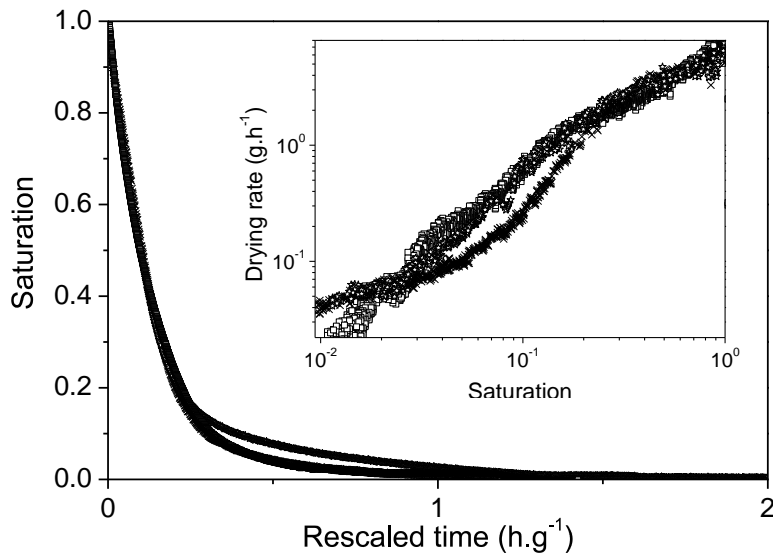
Moreover the  $T_2$  distribution initially exhibits a main peak situated around 60 ms which evolves towards about 85 ms and remains fixed at this value after 30 min. This relaxation time depends on the ratio of the volume of free liquid water to the area of the water-solid interface with a factor depending on the surface relaxivity [22-23]. For example this volume to surface ratio is proportional to radius in the case of uniform spherical pores. Thus the  $T_2$  values can be considered as reflecting characteristic pore sizes in the material. Our data show that the pore structure is fixed after about 30 min.

#### *Impact of admixtures*

In order to go further in the analysis of a possible interplay between drying characteristics and hydration reaction, we carried out tests with two types of accelerator added to the mixture. We can see that these admixtures have no impact on the drying curve (see Figure 3).

We can conclude that there is no direct impact of hydration on the water loss measurement in time and the porous structure is fixed after a relatively short time of drying, which means that our drying data essentially reflects the evaporation from a porous medium of given structure.

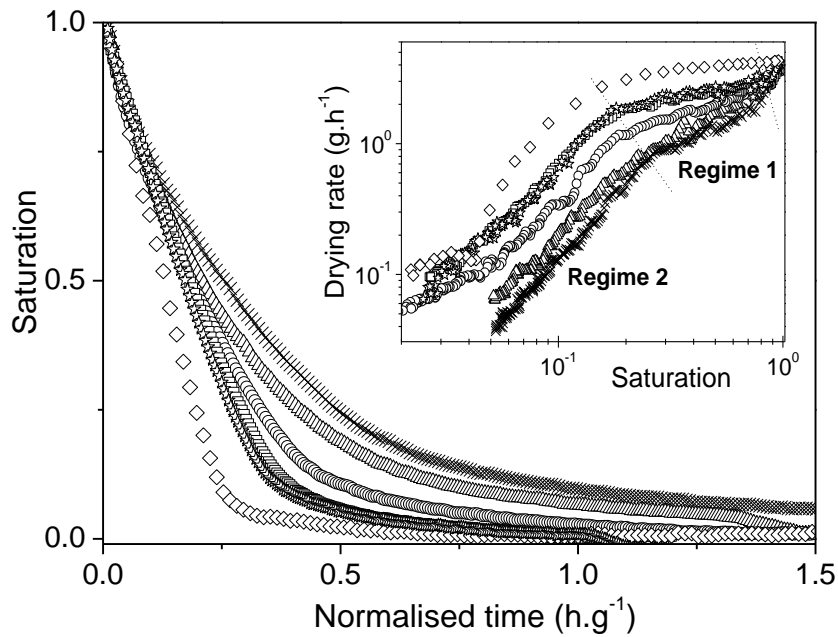




**Figure 3:** Water saturation as a function of rescaled time during drying tests of a plaster paste ( $w/p=0.8$ , cylinder A, air flow velocity:  $9.7 \text{ m.s}^{-1}$ ) prepared without admixtures (squares), or with admixtures: (crosses) ground gypsum, (stars) potassium sulfate. The inset shows the corresponding drying rate.

#### *Impact of initial water content*

The impact of the initial water concentration may be seen in Figure 4. The drying curves and the drying rate curves superimpose down to a saturation around 80%. Then we have a different evolution of the curves which tend to separate as the saturation decreases down to a few tenths of percent and finally they seem to tend to a plateau (in fact a slowly decreasing curve) whose level increases when  $w/p$  decreases, meaning that the rescaled time for complete drying increases dramatically at low  $w/p$ . On the contrary there seems to be a kind a saturation of this effect at high  $w/p$ , since the distance between the drying curves decreases when  $w/p$  increases and finally the curves obtained for  $w/p$  equal to 0.8 and to 0.9 superimpose. The fact that at such  $w/p$  values we approach the drying curve of a simple bead packing suggests that when the effect observed above tends to disappear for sufficiently large pore sizes.



**Figure 4:** Water saturation as a function of rescaled time during drying tests with plaster pastes for different water to powder ratios (w/p) and a bead packing (diamonds) (air flow velocity: 6.1 m/s; cylinder A): 0.5 (crosses), 0.6 (triangles), 0.7 (circles), 0.8 (squares), 0.9 (stars). The inset shows the corresponding drying rates. The two main regimes of drying (see text) are identified by dotted lines.

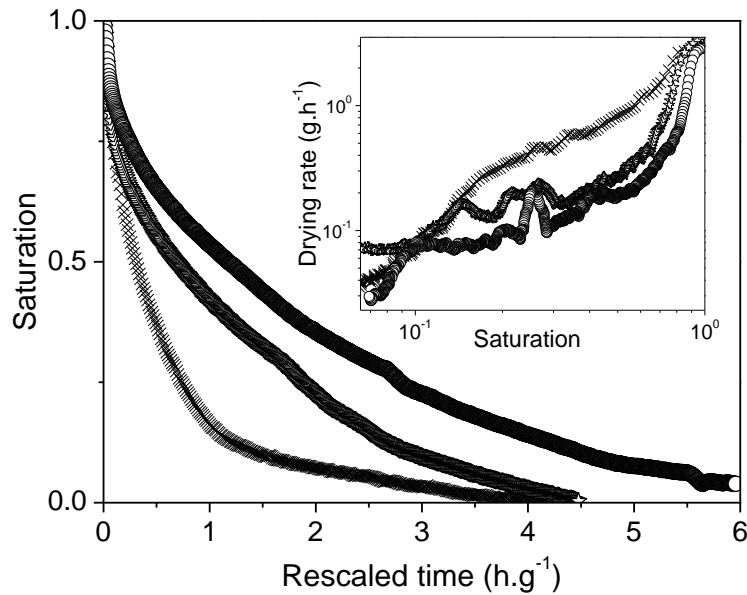
Looking at the drying rate curves we get a deeper insight in the processes. First we can observe a systematic drop in drying rate in a first stage (until a saturation of about 80%) while the drying rate for a simple bead packing remains almost constant until a saturation of about 15%. On the contrary, for plaster pastes, for a saturation between about 80 and 15% the drying rate significantly decreases and this phenomenon is more marked for smaller w/p. After this period we enter another regime where the drying rate more strongly decreases. However this decrease is similar for the different concentrations: the drying rate curves follow curve of similar shape starting at different points corresponding to the end of the previous regime.

These results show that there is an effect occurring during plaster drying which tends to lower the drying rate below that observed for a simple porous medium. This effect is more marked for smaller initial water content, i.e. when the permeability is smaller. However this effect apparently does not play any role in the regime 2 of drying where it is generally assumed that the drying rate is controlled by the flow in the thin liquid films through the material, and thus by the permeability in the bulk.

#### *Impact of sample height*

We carried out experiments with samples of different heights and the same boundary conditions (air flow). It appears that the resulting drying curves (see Figure 5), after a short period at the same rate, then significantly separate from each other. Even after rescaling the time by the water amount the saturation decreases more slowly for higher sample height. The drying rate curves have similar relative evolutions. The most unexpected effect is the dramatic decrease of the drying rate which

occurs when the saturation is between 0.9 and 0.6 for the largest heights. This shows that the effect of slowing down drying increases when the amount of water to be evaporated increases.



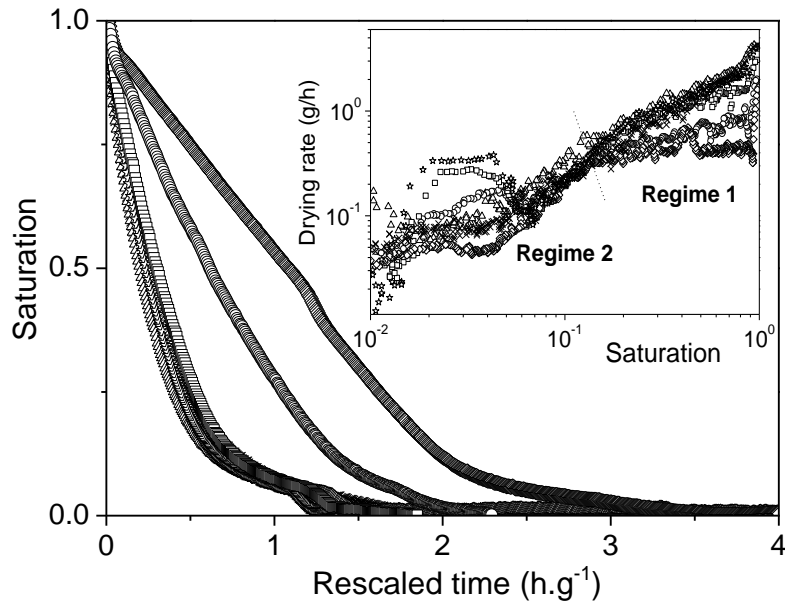
**Figure 5:** Water saturation as a function of rescaled time during drying tests with a plaster paste ( $w/p=0.9$ , air flow velocity: 6.1 m/s) for different cylinder heights: (crosses) 1.2 cm, (stars) 2.2 cm, (circles) 4 cm. The inset shows the corresponding drying rates.

#### *Impact of the air flow velocity*

The drying curves obtained for different velocities of the air flux are shown in Figure 6a. Obviously the drying rate increases for increasing velocities. This is clear during the first regime of drying (see Figure 6b). Actually, as the velocity decreases the shape of the drying curve turns from the typical aspect discussed above, i.e. with a significant decrease of the drying rate in the first regime, to a very different shape in which the drying rate is almost constant in the first regime. Thus, apparently the slowing drying effect is increased by the air flow velocity.

Then the drying rate curves all follow the same curve in regime 2 whatever the velocity. This confirms our previous observation that in the regime for which the drying is a priori governed by internal liquid flow through the bulk the drying rate is independent of the effects occurring during the first regime.

Note that for some curves there is a kind of step in the last period of drying (see Figure 6a), i.e. a rapid decrease of the mass in a short time. This effect is even clearer in the drying rate curves (see Figure 6b) since it takes the form of a jump in a limited range of time. It is worth emphasizing that this new effect is not clearly related to the drying conditions, it seems to occur in a random way, and sometimes does not even occur. Such an effect is likely related to some local breakage of the structure.



**Figure 6:** Water saturation as a function of rescaled time during drying tests of a plaster paste ( $w/p=0.6$ , cylinder A) for different air flow velocities: (diamonds) no air flow, (circles)  $1.2 \text{ m.s}^{-1}$ , (squares)  $2.5 \text{ m.s}^{-1}$ , (stars)  $4.4 \text{ m.s}^{-1}$ , (triangles)  $6.1 \text{ m.s}^{-1}$ , (crosses)  $7.3 \text{ m.s}^{-1}$ . The inset shows the corresponding drying rates. The two main regimes of drying (see text) are identified by dotted lines.

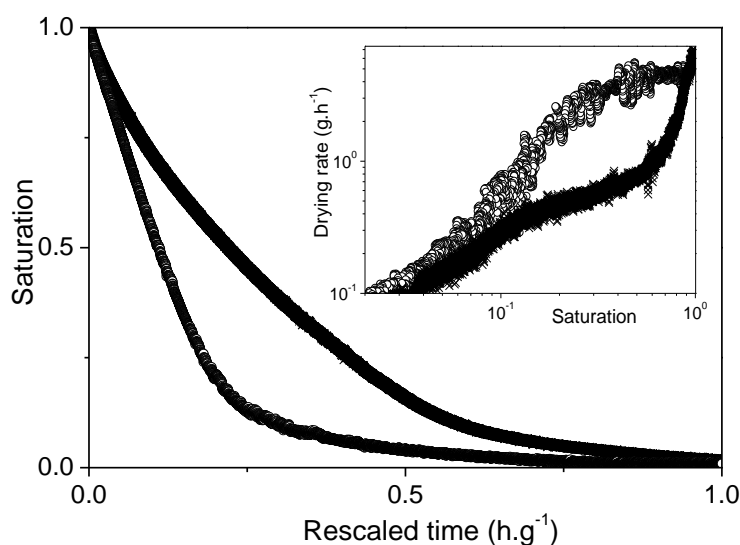
#### 4. Analysis of the slowing down drying effect

We have seen that there is an effect of delaying of the drying process with a plaster paste which occurs essentially during the regime 1 of drying. In this regime it is generally assumed for simple porous media that drying is controlled by the evaporation in a region close to the free surface while the liquid is drained by capillary effects towards the free surface. We also observed above that this delaying effect does not seem to affect the regime 2 of drying which is generally assumed to be controlled by the liquid flow throughout the sample bulk. These observations suggest that the delaying effect is due to a physical phenomenon occurring around the free surface of the sample, which would thus affect regime 1 but not regime 2. In this section we attempt to further analyze the origin of this effect with the help of tests providing information on some physical characteristics at a local scale.

##### 4.1 Impact of the liquid solution

The water solution inside the drying plaster is far from being pure. In particular the hydration reaction occurs because the suspension of plaster is saturated in gypsum. This means that just at the end of the reaction the solution is still saturated otherwise the reaction would not occur. Thus the remaining solution, which will then evaporate during sample drying, is initially saturated with gypsum.

To test the impact of the presence of gypsum in water it would be necessary to remove the remaining gypsum at the end of the hydration phase, which does not seem possible. Instead we consider a dry solid plaster sample that we fill again either with a saturated gypsum water solution or with distilled water. We can then compare the drying characteristics of such materials (see Figure 7). First we can remark that the slowing down effect in drying still occurs for a re-imbibed plaster: the drying curve has an aspect similar to that observed for the same type of sample for drying after sample preparation. Moreover the plaster sample filled with distilled water dries faster than the one filled with saturated gypsum solution. **Note however that both samples exhibit the same drop in drying rate (see inset of Figure 7) at the very beginning of drying.** Therefore the slowing down drying effect likely comes from the nature of the liquid solution, and in particular from the presence of gypsum ions. The exact physical effect which occurs is still unclear at this stage. To have more information we carried out tests intended to provide a view of the structure evolution at a local scale.



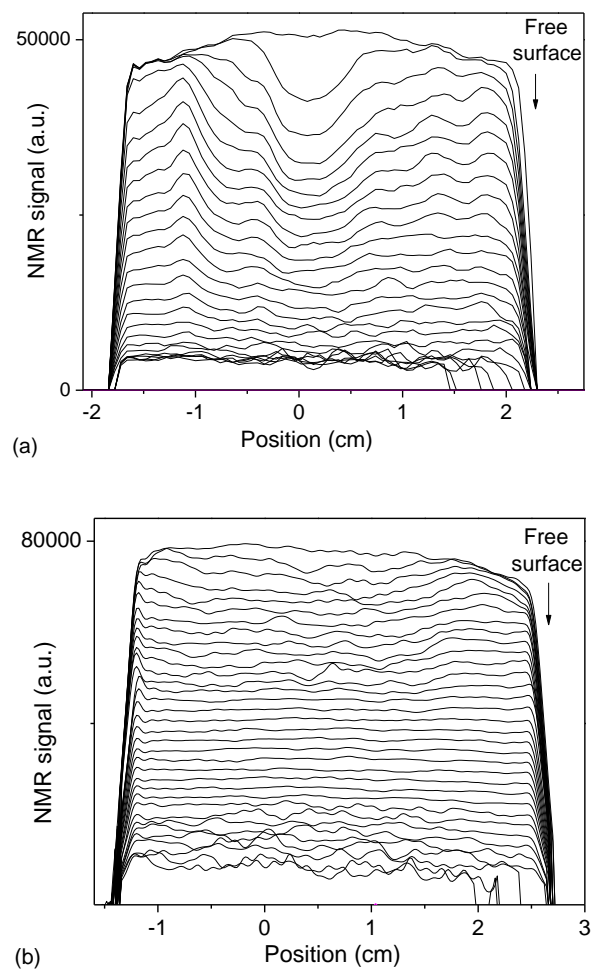
**Figure 7:** Water saturation as a function of rescaled time during drying tests of a plaster paste ( $w/p=0.8$ , cylinder A, air flow velocity:  $9.7\text{ m}\cdot\text{s}^{-1}$ ) filled with gypsum solution (crosses) or with distilled water (circles). The inset shows the corresponding drying rate.

#### 4.2 Water distribution in the sample

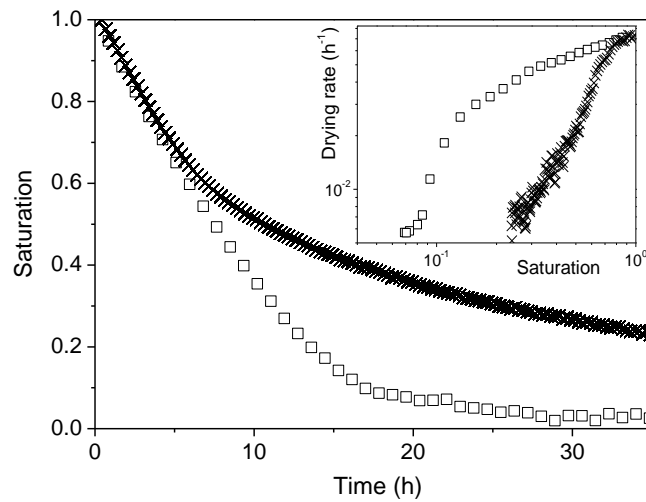
We carried out MRI tests making it possible to have the water distribution in time along the height of the sample. During a first phase the saturation remains homogeneous in the sample (see Figure 8a). Note that local fluctuations of the signal level are likely due to heterogeneities of the sample structure resulting from the preparation process, but they play a negligible role in the effects here discussed. The initial period (with uniform profiles) lasts until the saturation reaches about 15-20 %. In a second phase there is a dry front which progresses towards the interior of the sample. These characteristics are quite similar to those usually observed with simple porous media, and here again illustrated with a bead packing (see Figure 8b). Nevertheless the corresponding drying curves and drying rate (here computed from integration of the water content profiles obtained by NMR) significantly differ (see Figure 9), in a way which is consistent with above results. Note that here even if we used a relatively high  $w/p$  the slowing down effect is very significant due to the large thickness of the sample. **Note**

also that the time for complete dissolution of gypsum in water is about 36 hours [17] while the typical duration of our tests is 24 hours; in the tests of Figure 9 the different evolutions of the saturation vs time curve develop during the first hours of the drying, which means that dissolution effect were likely negligible.

So we conclude that the slowing down drying effect, which essentially occurs during the first period of drying, does not affect the water distribution in the bulk of the sample. This tends to confirm that it is associated with a phenomenon developing in the vicinity of the free surface of the sample, in a thickness lower than the resolution of the present MRI tests, say of the order of 1 mm.



**Figure 8:** Water content profile (through the NMR signal) inside a bead packing (a) and a plaster ( $w/p=0.8$ , cylinder B) (b), air flow velocity: 0.27 m/s. The profiles are taken every hour.



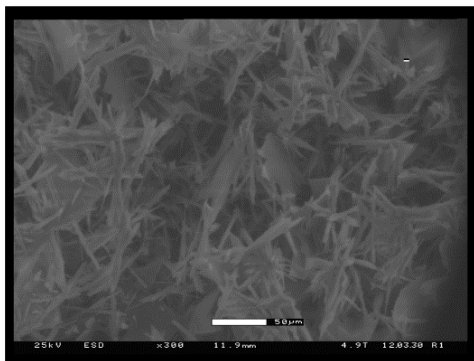
**Figure 9:** Water saturation as a function of time during the drying tests of Figure 8, as deduced from NMR measurements: **(squares) bead packing, (crosses) plaster paste.**

#### 4.3. Evolution of the solid structure in time

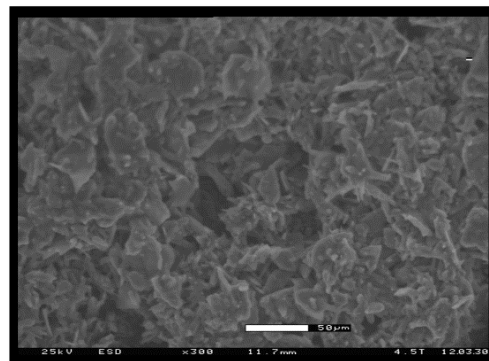
It now becomes necessary to have a look at the solid structure around the free surface of the sample. In that aim we performed ESEM which provides images of the surface of a dry plaster sample cut along different depths. However it is likely that during the cutting operation the structure is significantly perturbed. Focusing only on the free surface of the sample, which makes it possible to avoid this problem, we see (see Figure 10) that the structure is quite different after several drying tests following re-imbibition of a saturated gypsum solution. This means that there is a progressive transformation of the solid structure during drying, which can only be due to the presence of gypsum in solution.

Note that the repeated drying-imbibition cycle procedure was used here assuming it enhances the possible structure transformation at the origin of the slowing down drying effect. A detailed study of this enhancement is nevertheless out the scope of the present study. Here we just used this procedure for a qualitative demonstration of the effect.

(a)

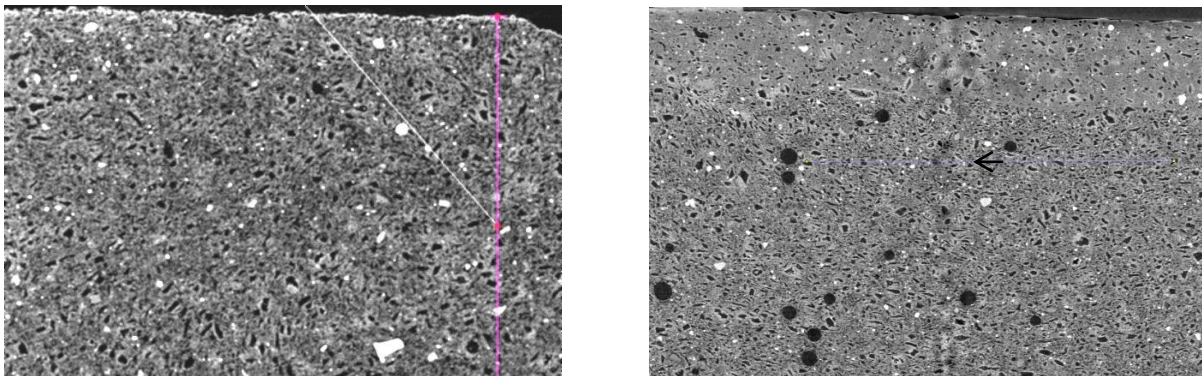


(b)



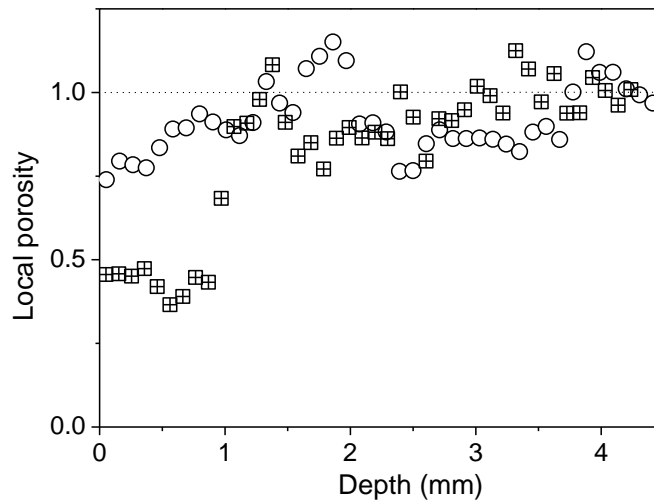
**Figure 10:** ESEM images of the free surface of dry plaster samples ( $e/p = 0.8$ , cylinder A): (a) after preparation and drying, (b) after four cycles of drying-imbibition

To get more information on the structure evolution inside the sample we observed the same samples by X-Ray microtomography (see Figure 11) along a section perpendicular to the free surface of the sample. In the case of a plaster obtained after the first drying there is no clear heterogeneity in the sample structure, except in a thin layer at the top surface where there is no pores (black areas) of intermediate size. In the present study we just analyzed the images by estimating the porosity distribution (see Figure 12). A slight decrease in porosity is apparently effectively observed at the approach of the free surface, but fluctuations of similar amplitude are also observed at larger depth so that it is hard to be reach a definitive conclusion on that point. For the plaster subjected to three cycles of drying-imbibition the thickness of this layer has clearly increased: it now reaches about 1 mm. Now we observe a significant step in the porosity distribution (see Figure 12). This means that there is a kind of clogging effect which takes place in an area very close to surface exposed to drying, and which likely increases with the number of imbibition-drying cycles.



**Figure 11:**  $\mu$ -tomography imaging of a cross-section perpendicular to the free surface of dry plaster samples ( $e/p = 0.8$ , cylinder B): (left) after preparation and drying, (right) after three cycles of drying-imbibition. The height of each picture is 4 mm, the width 6 mm. Volume element of  $5.75 \mu\text{m}$  – X-ray source of 64 W and 80 keV. Dark areas correspond to pores.





**Figure 12:** Porosity distribution from image analysis of Figure 11 data. Pores were considered to correspond to dark regions below a brightness threshold. Each image was cut in successive portions of 100  $\mu\text{m}$  and the porosity was rescaled by its average level observed around 4 mm from the free surface.

## 5. Final discussion

Our different results now make it possible to draw a general picture of the main drying characteristics of plaster pastes. Relatively rapidly after the preparation the basic hydration reaction ends and a solid porous structure is formed. At that time the water is still saturated with gypsum ions so that a slight removal of water from this solution will lead to a new process of precipitation of gypsum crystals. **In addition there are colloidal particles in suspension which may be advected towards the free surface and tend to increase the distance of diffusion of water and slow down the drying process [24]. However here this phenomenon is likely negligible. Indeed the effective solid volume fraction of these colloidal particles in the liquid phase is between 2.5 and 3.5% and in that case for a sample of 1.2 cm thick we would expect a rather low impact on the drying curve [24]. Additionally the impact of the colloidal compaction around the free surface is not significant during the first stage of drying (in contrast with our present observations, i.e. strong initial decrease of the drying rate). At last we have observed (not shown here) that the effect observed for plaster pastes is significantly increased by successive drying imbibition cycles with gypsum solutions without impurities. We conclude that the effect observed here is due to the presence of gypsum ions in solution.** In regime 1 evaporation mainly occurs close to the free surface of the sample, so that gypsum crystals form in this region. This induces a kind of clogging of the porous structure which increases in time.

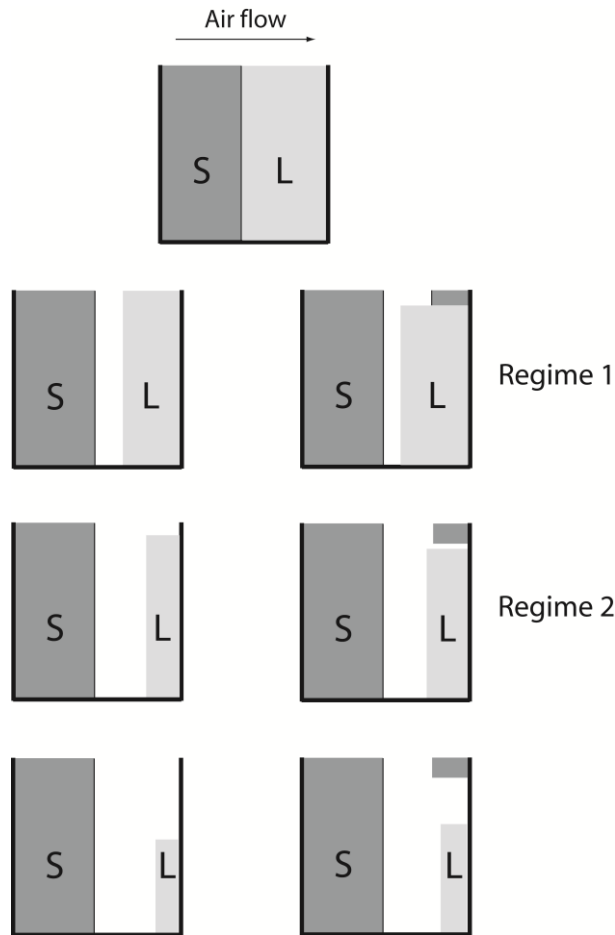
Let us now examine in more details how this clogging can effectively decrease the drying rate. First we can assume that this is by clogging the upper free surface of the sample: the crystals would progressively decrease the area of the liquid-air interface, which would decrease the net evaporation

rate. Such a process would tend to make the drying rate tend to zero, and is anyway in contradiction with the observations of a clogging taking place in some significant thickness inside the material from its free surface. Anyway it seems very difficult to get a strictly impermeable zone via the accumulation of crystals which due to their complex form will never perfectly fill the volume.

Another possibility for explaining the decrease in drying rate is the decrease in permeability the clogging effect induces. This is the process suggested in [14]. Such a process would result from the accumulation of crystals in pores, as finally described in the previous paragraphs. However a permeability decrease does not in general affect the rate of drying of a porous medium in regime 1. For example, for a bead packing, under given conditions of air flow the drying rate is independent of the bead size in the first regime [8]. More generally a homogeneous decrease of the porosity in a sample will not affect the rate of drying in regime 1 but will tend to reduce the duration of the CRP, since internal liquid flow will be more difficult and will lead to reach regime 2 sooner. **However a decrease of the pore size in a thin sample layer at the free surface of the sample will tend to maintain a high constant drying rate for a longer time since this region will remain saturated while the largest pores situated below progressively empty (see [25]).** Finally the impact of the clogging on the porous structure does not seem to be a possible explanation for the decrease of the drying rate in regime 1. An effect with a more significant, sooner impact, is required.

A last possibility for explaining the decrease in drying rate is that the clogging implies the existence of a dry region below the free surface. This would affect the drying rate by increasing the distance of diffusion between the liquid-air interface and the air flow region. A similar effect occurs in regime 2 for a simple porous medium. In that case the dry region keeps a small thickness before the last regime of drying is reached where it now significantly increases. Here such a process suggests that as soon as some crystals are formed just below the sample free surface the liquid does not wet anymore this region and will now evaporate from the layer situated just below these new crystals and so on at the next step, thus leading to the formation of a dry region of increasing thickness as drying progresses.

A scheme of this process is presented in Figure 12, along with a comparison with the drying characteristics of pure water in a simple homogeneous porous medium (i.e. a solid porous system). During Regime 1 we have a homogeneous desaturation in both cases but due to the crystallization of salts below the free surface of the sample the air-liquid interface is situated at some distance from the free surface. This distance slowly increases during all regime 1. Then the liquid transfer from the interior of the sample under the action of capillary pressure does not allow to replace sufficiently rapidly the evaporated liquid, and we enter Regime 2. For the simple system this leads to a decrease of the level of the air-liquid interface inside the sample. For a plaster sample this regime starts when the liquid transfer is not sufficient to replace the liquid evaporated just below the crystallized region, so that the air-liquid interface moves away from the bottom of the crystallized region, which now has no more impact on the drying rate. This explains why the effect of slowing down drying does not seem to have any impact on the drying in this regime even when the air flow velocity or the solid fraction are varied (see Figures 2 and 4).



**Figure 13:** Scheme of the drying regimes (see text) in a simple system (pure liquid in a homogeneous porous material) (left) and in a plaster (right). Dark grey (S) = solid part, Light grey (L) = liquid, white = air.

We can finally check in more details the consistency of this scheme with regards to the trends observed above. When the solid fraction is increased (i.e. w/p decreased) it is likely that the crystallization region increases in thickness more rapidly. The reason for that remains to be elucidated, we can suggest that the critical concentration of salt is reached more rapidly in smaller pores. When the air flow velocity is increased the crystallization region increases again more rapidly. In that case this should be due to the fact that the initial surface of evaporation needs to be at a slightly larger depth than for a smaller velocity, so that the crystallization would start to grow at a larger depth too. Finally the origin of the impact of the sample height is simple: for the same saturation we have provided more liquid towards the sample free surface, which leads to a larger crystallization region. A more complete confirmation of the validity of this scheme requires theoretical modelling.

## 6. Conclusion

We have shown how that the drying rate of plaster pastes is significantly lower than that expected for a pure liquid evaporating from a simple homogeneous porous medium. This effect results from the progressive formation of a crystallization region (due to the presence of gypsum salts in the liquid)

below the free surface of the sample. This creates a dry region and decreases the drying rate by increasing the path the vapor has to follow before reaching the free surface. This scheme seems globally consistent with our various observations, in particular from the pictures obtained with microscopic techniques, and from a series of tests varying the experimental conditions (velocity, solid fraction, sample height). However a complete validation of the assumed mechanisms of this phenomenon requires a full modelling of the process.

**Acknowledgements:** We thank David Hautemayou for his technical support.

## 7. References

1. Neville HA (1926) Adsorption and Reaction I., *Journal of Physical Chemistry* 30: 1037-1042
2. Ridge MJ and Beretka J (1969) Calcium Sulphate Hemihydrate and Its Hydration, *Rev Pure and Appl Chem.*, 19: 17-44
3. Hansen WC (1963) Setting and hardening of gypsum plaster, *Materials Research and Standards*, 3: 359-363.
4. Vignes JL, and Essaddam H (1997) Une vie de plâtre, *Bulletin de l'union des physiciens*, 790 : 145-164
5. Jaffel H, and Korb JP (2006) Probing Microstructure Evolution during the Hardening of Gypsum by Proton NMR Relaxometry, *J. Phys. Chem. B*, 110: 7385-7391
6. Frederiksen R, and Marchand E (Eds.) (2010) *Plaster casts: making, collecting and displaying from classical antiquity to the present*, De Gruyter, Berlin
7. Petkovic J, Huinink HP, Pel L, Kopinga K, van Hees RPJ (2007), Salt transport in plaster/substrate layers, *Materials and Structures*, 40: 475-490
8. Coussot P (2000) Scaling approach of the convective drying of a porous medium, *Eur. Phys. J. B*, 15, 557-566
9. Van Brakel J (1980) Mass transfer in convective drying, "Advances in drying", Vol. 1, Hemisphere, Washington
10. Van der Heijden GHA, Pel L, Huinink HP, Kopinga K (2011) Moisture transport and dehydration in heated gypsum, an NMR study, *Chem. Eng. Sci.*, 66: 4241-4250
11. Vosten B, Hersfeld B (1976) The drying of crust-forming materials as exemplified by the drying of gypsum wallboard, *Zement-Kalk-Gips*, 5:213-222 (in German)
12. Schultz P, Schlünder EU (1990) Influence of additives on crust formation during drying, *Chem. Eng. Process*, 28: 133-142
13. Gupta S, Huinink HP, Prat M, Pel L, Kopinga K (2014) Paradoxical drying of a fired-clay brick due to salt crystallization, *Chem. Eng. Sci.*, 109: 204-211
14. Espinosa-Marzal RM, Scherer GW (2013) Impact of in-pore salt crystallization on transport properties, *Environ. Earth Sci.*, 69: 2657-2669
15. Song KM, Mitchell J, Gladden LF (2009), Magnetic resonance studies of hydration kinetics and microstructural evolution in plaster pastes, *J Mater. Sci.*, 44: 5004–5012

16. Song KM, Mitchell J, Jaffel H, Gladden LF (2010) Simultaneous monitoring of hydration kinetics, microstructural evolution, and surface interactions in hydrating gypsum plaster in the presence of additives, *J Mater. Sci.*, 45: 5282–5290
17. Jaffel H (2006) Multi-scale characterization of evolving porous media, Ph.D. thesis, Ecole Polytechnique, Palaiseau (in French)
18. Chou YL (1975) *Statistical analysis*, Holt, Rinehart & Winston of Canada Ltd; 2nd edition
19. Faure P, Rodts S (2008) Proton NMR relaxation as a probe for setting cement pastes, *Magnetic Resonance Imaging*, 26: 1183-1196
20. Carr H, and Purcell E (1954) Effects of diffusion on free precession in Nuclear Magnetic Resonance Experiments, *Physical Review*, 94, 630-638
21. McDonald PJ, Korb JP, Mitchell J, and Monteilhet L (2005), Surface relaxation and chemical exchange in hydrating cement pastes: a two-dimensional NMR relaxation study, *Phys. Rev. E* 72, 011409
22. Zimmerman JR, and Brittin WE (1957), Nuclear Magnetic Resonance Studies in Multiple Phase Systems: Lifetime of a Water Molecule in an Adsorbing Phase on Silica Gel, *J. Phys. Chem.*, 61: 1328-1333
23. Browstein KR and Tarr CE (1979) Importance of classical diffusion in NMR studies of water in biological cells, *Phys. Rev. A*, 19: 2446-2453
24. Keita E, Faure P, Rodts S, Coussot P (2014) MRI evidence for a receding-front effect in drying porous media, *Phys. Rev.*, 87 : 062303
25. Coussot P, Gauthier C, Nadji D, Borgotti JC, Vié P, and Bertrand F (1999) Capillary motions during the drying of a granular pastes. *C.R. Acad. Sci. Paris*, 327:1101-1106.