



**HAL**  
open science

## Effects of pore water chemical composition on the hydro-mechanical behavior of natural stiff clays

Xuan-Phu Nguyen, Yu-Jun Cui, Anh Minh A.M. Tang, Yongfeng Deng, Xiang-Ling Li, Laurent Wouters

► **To cite this version:**

Xuan-Phu Nguyen, Yu-Jun Cui, Anh Minh A.M. Tang, Yongfeng Deng, Xiang-Ling Li, et al.. Effects of pore water chemical composition on the hydro-mechanical behavior of natural stiff clays. *Engineering Geology*, 2013, 166, pp.52-64. 10.1016/j.enggeo.2013.08.009 . hal-00926883

**HAL Id: hal-00926883**

**<https://enpc.hal.science/hal-00926883>**

Submitted on 26 Apr 2018

**HAL** is a multi-disciplinary open access archive for the deposit and dissemination of scientific research documents, whether they are published or not. The documents may come from teaching and research institutions in France or abroad, or from public or private research centers.

L'archive ouverte pluridisciplinaire **HAL**, est destinée au dépôt et à la diffusion de documents scientifiques de niveau recherche, publiés ou non, émanant des établissements d'enseignement et de recherche français ou étrangers, des laboratoires publics ou privés.

1 **Effects of pore water chemical composition on the hydro-mechanical**  
2 **behavior of natural stiff clays**

3 X. P. Nguyen<sup>1</sup>, Y. J. Cui<sup>1</sup>, A. M. Tang<sup>1</sup>, Y. F. Deng<sup>2</sup>, X. L. Li<sup>3</sup>, L. Wouters<sup>4</sup>

4 1. Ecole des Ponts ParisTech, Navier/CERMES, Marne-la-Vallée, France ([phunguyenx@gmail.com](mailto:phunguyenx@gmail.com))

5 2. Southeast University, Institute of Geotechnical Engineering, Transportation College, Nanjing, China

6 3. Euridice c/o SCK/CEN, Mol, Belgium ([xli@sckcen.be](mailto:xli@sckcen.be))

7 4. ONDRAF, Belgium ([l.wouters@nirond.be](mailto:l.wouters@nirond.be))

8  
9  
10  
11  
12 Corresponding author:

13 Prof. Yu-Jun CUI

14 *Ecole des Ponts ParisTech*

15 6-8 av. Blaise Pascal, Cité Descartes, Champs-sur-Marne

16 F-77455 MARNE LA VALLEE

17 France

18 Telephone: +33 1 64 15 35 50

19 Fax: +33 1 64 15 35 62

20 E-mail: [yujun.cui@enpc.fr](mailto:yujun.cui@enpc.fr)

1 **Abstract:** Boom Clay and Ypresian Clays have been considered as potential geological host  
2 formations for radioactive waste disposal in Belgium. Considering the significant differences in  
3 pore water chemical composition between several sites involving these two formations as well as  
4 the possible evolution of the chemical composition during the large lifespan of a radioactive  
5 waste disposal, it appeared important to investigate the effects of pore water chemical  
6 composition on the hydro-mechanical behaviors of these two potential host formations. In this  
7 study, these effects were investigated by carrying out specific oedometer tests. Different  
8 compositions were considered for this purpose: distilled water, synthetic site water, Sodium  
9 Chloride solutions at concentrations of 15 and 30 g/L. Clear effects of pore water chemical  
10 composition on the hydro-mechanical behavior were observed: increasing pore water salt  
11 concentration gave rise to (i) increase of oedometric modulus  $E_{od}$ , permeability  $K$  and  
12 consolidation coefficient  $C_v$ ; and (ii) decrease of compression slope  $c'_c$ , swelling slope  $c'_s$  and  
13 secondary compression coefficient  $C_{\alpha e}$ , which is in agreement with the diffuse double layer  
14 theory and the clay particle aggregation as identified by microstructural analyses. Furthermore,  
15 the pore water chemical composition effects were found to be mineralogy, stress state and salt  
16 concentration dependent: (i) Ypresian Clays with higher smectite content showed clearer  
17 chemical effect on the coefficient of consolidation  $C_v$ ; (ii) the chemical effects on compressibility  
18 and swelling capacity parameters were found to be attenuated with increasing vertical stress; and  
19 (iii) the increase of chemical effect with increasing pore water salinity was limited to a certain  
20 salt concentration. The competition between the physico-chemical and mechanical effects was  
21 identified: the pore water chemical composition effect is clear only in the low-stress range where  
22 the hydro-mechanical behavior is dominated by the physico-chemical effect.

1 Keywords: Boom Clay; Ypresian Clays; oedometer test; physico-chemical effect; hydro-  
2 mechanical behavior.

3

#### 4 **1. Introduction**

5 Two clay formations, Boom and Ypresian, have been considered as potential geological host  
6 formations for high-level and/or long-lived radioactive waste disposal in Belgium. Several sites  
7 have been investigated, such as Mol and Essen for Boom Clay, Doel and Kallo for Ypresian  
8 Clays. Significant variations in pore water salinity between these sites have been reported (De  
9 Craen et al., 2004, 2006; van Marcke and Laenen, 2005; van Marcke, 2009). In addition, the pore  
10 water salinity at each site may also evolve at the time scale of radioactive waste disposal. This  
11 can substantially affect the hydro-mechanical behavior of the host formations. Therefore, it is  
12 essential to evaluate the sensitivity of the hydro-mechanical behavior of the host formations to  
13 changes in pore water chemical composition.

14 Most of studies involving chemical effects on the hydro-mechanical behaviors of soils were  
15 conducted on reconstituted soils and natural soft soils. Various preparation methods were  
16 developed in the laboratory for this purpose: i) mixing the soil powder with a desired solution; ii)  
17 immersing a soil sample in a solution; iii) percolating a soil sample by a solution. Di Maio and  
18 Fenelli (1994), Di Maio (1998, 1996), Di Maio et al. (2004), Gajo and Loret (2007), Loret et al.,  
19 (2002), Rao and Thyagaraj (2007), Yukselen-Aksoy et al. (2008) showed significant effects of  
20 pore water saline concentration on the hydro-mechanical behavior of reconstituted expansive  
21 clays with wide ranges of concentrations: i) changes in salt concentration and ion-type result in  
22 reversible or irreversible volume changes of soil, mainly by osmotic consolidation or osmotic

1 swelling; ii) increasing vertical stress reduces the extent of chemically-induced volume change;  
2 and iii) the compressibility and swelling capacity are reduced by increasing salt concentration.  
3 These effects have commonly been explained with the Guy-Chapman's theory of diffuse double  
4 layer (Mitchell and Soga, 2005).

5 For the non-active clays, Chen et al. (2000), Olson and Mesri (1970), Sridharan and Rao (1973),  
6 Wahid et al. (2011a, 2011b) found that they are relatively inert with respect to changes in pore  
7 water salt concentration, but sensitive to changes in  $pH$  (due to the mineral dissolution and the  
8 degradation of particle edges) and dielectric constant (due to the van de Waals attractive force).

9 For the natural stiff clays, the pore water chemical composition effect has been rarely studied.  
10 Swelling tests were carried out on the Callovo-Oxfordian claystone with distilled water and  
11 several saline solutions under different stress levels by Daupley (1997) and Wakim (2005). It  
12 was observed that the higher the salt concentration, the lower the swelling capacity. The same  
13 conclusion was drawn by Coll et al. (2008) for natural Boom Clay (Mol site, 223 m depth). For  
14 unsaturated compacted Boom Clay, Mokni et al. (2012) observed a significant effect of salt  
15 concentration on the water retention property but a negligible effect on the compressibility. On  
16 the other hand, only a slight pore water chemical composition effect was identified by Deng et al.  
17 (2011a) on the hydro-mechanical behavior of Boom Clay at Essen (227 m depth). The reason is  
18 probably the slight difference between the two solutions considered, distilled water and synthetic  
19 Boom Clay water (SBCW – water prepared from salts' powder having similar chemistry as *in*  
20 *situ* pore water), as well as the limited amount of smectite in Boom Clay. Comparison with  
21 reconstituted expansive clays shows that natural stiff clays respond to changes in pore water salt  
22 concentration in the same fashion, but to a lesser extent. This is probably due to the fact that only  
23 the active clays fraction (smectite for example) in natural stiff clays is sensitive to changes in

1 pore water chemical composition. Moreover, the natural clay structure, *i.e.* particle arrangement  
2 and inter-particle bonding (Burland, 1990), developed at great depths since several millions years  
3 may also attenuate the effect of pore water salinity changes.

4 In the present work, the effects of pore water chemical composition on the swelling capacity,  
5 compressibility, permeability, consolidation and secondary compression/swelling of Boom Clay  
6 and Ypresian Clays were investigated by means of specific oedometer tests. Intact samples with  
7 Sodium Chloride solutions at 15 and 30 g/L-concentrations were tested. Data from two similar  
8 tests on Boom Clay with distilled water and SBCW (Deng et al., 2011a; Nguyen, 2013) will be  
9 incorporated for further analysis. Microstructure analyses were also performed on samples in  
10 both intact and after-test states, providing further insight into the mechanisms of chemical impact  
11 on the hydro-mechanical behavior of natural stiff clays.

## 12 **2. Materials and methods**

### 13 *2.1. Boom Clay*

14 Boom formation was deposited in the Rupelian stage, about 36-30 millions years ago, in the  
15 Southern part of the North Sea basin (ONDRAF, 2001). In Belgium, Boom Clay is located in the  
16 Northeast, in the Campine region. This Tertiary formation outcrops near the Antwerpen city,  
17 gently dips and thickens toward the Northeast direction. It corresponds to a marine sediment  
18 sequence of silty clays and clayey silts, and is subdivided into four members from bottom to top  
19 with depths at the Essen site: Belsele-Waas (260 - 280 m), Terhagen (237 - 260 m), Putte (200 -  
20 237 m), and Boeretang (154 - 200 m). The soil studied (BE83) was vertically cored in a borehole  
21 at the Essen site, from 226.65 m to 227.75 m depth, in the lower part of Putte member. This  
22 member is the most clayey one, dark gray in color, rich in organic matters and with low

1 carbonates content (ONDRAF, 2001). Note that the underground research laboratory (URL)  
2 HADES constructed at the Mol site is also situated in this member.

3 The mineralogical composition of Boom Clay BE83 (Deng et al., 2011b) was determined by X-  
4 ray diffractometry and presented in Table 1 for the bulk mass and in Table 2 for the clay-size  
5 fraction ( $< 2 \mu\text{m}$ ). It can be observed that the Boom Clay mineralogy is dominated by non-clay  
6 minerals (60 % in bulk mass), and smectite represents about 20 % of the clay-size fraction.

7 The particle-size distribution curve of Boom Clay (Deng et al., 2011c) by hydrometer methods  
8 following the French standard (AFNOR, 1992) is shown in Figure 1. The results of Boom Clay  
9 at Mol at 223 m depth (BM223) from Baldi et al. (1988), Coll (2005), Lima (2011) and Romero  
10 (1999) are also presented. It appears that Boom Clay at Mol and Essen has similar particle-size  
11 distribution.

12 The physical and index properties of Boom Clay are shown in Table 3. It can be observed that  
13 according to ASTM (2006), Boom Clay is highly plastic with a liquid limit  $LL = 67.2$  and a  
14 plastic limit  $PI = 34.7$ . Its carbonate content is quite low, and at its initial state it is fully saturated  
15 with  $S_{r0} \approx 100 \%$ .

16 Table 4 gives the synthetic pore water chemical composition of Boom Clay (De Craen et al.,  
17 2006), indicating that  $\text{Na}^+$  is the main cation.

## 18 2.2. Ypresian Clays

19 Ypresian Clays were formed by marine deposition during the Ypresian period (55 - 49.6 Ma). It  
20 comprises four members, from bottom to top with depths at the Kallo site: Orchies (380 - 400  
21 m), Roubaix (311 - 380 m), Aalbeke (303 - 311 m) and Kortemark (289 - 303 m). The clays  
22 sequence roughly corresponds to the London clay in the Southeast of England, the basal part of

1 the Dutch Dongen formation and the Flandres clay in Northern France (van Marcke and Laenen,  
2 2005). The soil studied (YK74) was also taken from a cored borehole at the Kallo site at a depth  
3 of 361.81 – 362.60 m in the lower part of the Roubaix member (Cammaer et al., 2009).

4 The mineralogical composition of Ypresian Clays YK74 by X-ray diffractometry is presented in  
5 Table 1 for the bulk mass and in Table 2 for the clay-size fraction (Vandenberghe, 2011). Non-  
6 clay minerals represent only 43 % in the bulk mass while the smectite content is about the two-  
7 third of the clay-size fraction and one-third of the bulk mass.

8 The particle-size distribution curve of Ypresian Clays is shown in Figure 1 (Vandenberghe,  
9 2011). Compared to Boom Clay, Ypresian Clays are finer.

10 The physical and index properties of Ypresian Clays are shown in Table 3. According to ASTM  
11 (2006), they are also highly plastic with a liquid limit  $LL = 136.6$ , a plastic limit  $PI = 100.5$  and a  
12 blue methylene value  $VBS = 13.1$  g/100g (twice the value of BE83). The carbonate content is  
13 low. At their initial state, Ypresian Clays are slightly unsaturated with  $S_{r0} < 95$  %.

14 The synthetic pore water chemical composition of Ypresian Clays is shown Table 4 (van  
15 Marcke, 2009).  $Na^+$  is also observed as the main cation with a concentration (0.13 M) about  
16 twice that of Boom Clay (0.07 M). Note that the *in situ* pore water chemical compositions of  
17 Boom Clay at Mol and Essen are also different (De Craen et al., 2006). Note also that the pore  
18 water salinities of Ypresian Clays and Boom Clay are still respectively 4 and 7 times lower than  
19 that of the North Sea (about 35 g/L - 0.6 M NaCl).



1 2.3. *Sample preparation, test procedure and program*

2 Oedometer tests were conducted on soil samples of 50 mm diameter and 20 mm height. These  
3 samples were hand-trimmed from cores (YK74 and BE83) having the dimensions of 1.0 m in  
4 length and 100 mm in diameter.

5 Figure 2 presents the test procedure adopted in this study. After installing the soil sample in the  
6 oedometer cell, step loading (A-B) up to the *in situ* vertical effective stress ( $\sigma'_{v0} = 2.4$  MPa for  
7 BE83 and 3.2 MPa for YK74) was carried out without putting the sample in contact with water  
8 in order to avoid soil swelling which would affect the soil microstructure and thereby the soil  
9 hydro-mechanical behavior (Delage et al., 2007; Deng et al., 2011a, 2011b, 2011c, 2012).

10 After application of  $\sigma'_{v0}$ , the bottom porous stone and the drainage system were filled with  
11 synthetic water (B-C). A controller of pressure/volume (CPV) was then used to flush synthetic  
12 water out of the bottom porous stone and the drainage system via the other inlet by a desired  
13 solution (distilled water, synthetic water, NaCl at 15 or 30 g/L-concentrations). This solution was  
14 then injected through the bottom porous stone into the soil sample (C-D). The injection pressure  
15 was raised in steps to 1 MPa and then kept constant until the injected volume of the desired  
16 solution was more than twice the sample pore volume. This volume criterion was expected to be  
17 appropriate for fully replacing the initial pore water of the soil sample by the desired solution.  
18 Based on the flow monitoring during this stage, the hydraulic conductivity and then the intrinsic  
19 permeability were determined by the constant-head method. After stepwise decreasing the  
20 injection pressure to zero (D-I), the CPV was replaced by a container filled with the same  
21 solution in order to keep the sample saturated.

1 Unloading from  $\sigma'_{v0}$  to 0.05 MPa (I-II), reloading from 0.05 MPa to 3.2 MPa (II-III) and  
2 unloading again to 0.05 MPa (III-IV) were finally performed in steps. The French standard  
3 (AFNOR, 1997) was applied for the volume change criterion: the volume change was considered  
4 as steady when the vertical strain rate was lower than  $5.10^{-4}/8$  h.

5 Table 5 summarizes the four tests (BO3, BO4, YO1 and YO2) carried out in this study. Note that  
6 two tests (BO1, BO2) conducted by Deng et al. (2011a) and Nguyen (2013) are also reported in  
7 this table. The initial void ratio  $e_0$  and initial degree of saturation  $S_{r0}$  for each sample are also  
8 given. Scanning Electron Microscopic (SEM) and Mercury Intrusion Porosimetry (MIP) were  
9 carried out on freeze-dried (Delage et al., 2006) Boom Clay samples in both the intact and after-  
10 test states. These analyses were unfortunately not performed on intact Ypresian Clays sample  
11 because the sample was fissured. For convenience, while analyzing the microstructure results,  
12 the after-test samples are also termed by the name of the corresponding test. For instance, BO4  
13 sample means the sample taken at the end of test BO4 (Boom Clay with NaCl solution at 30 g/L-  
14 concentration) and then freeze-dried.

### 15 **3. Results**

#### 16 *3.1. Typical results and parameters definition*

17 Figure 3 presents a typical compression curve obtained from test BO4. The initial loading up to  
18 the *in situ* vertical effective stress  $\sigma'_{v0} = 2.4$  MPa without putting soil sample in contact with  
19 water resulted in a compression from  $e_0 = 0.723$  to  $e = 0.619$  with a slope-changing point at  $\sigma_v =$   
20 1.6 MPa. The degree of saturation  $S_r$  (estimated for each step from the measured volume changes  
21 assuming a constant water content  $w = w_0$ ) reached 100% at the end of this initial loading for all  
22 the tests. Le et al. (2011) also observed that Boom Clay at Mol at 223m depth (BM223) samples

1 reached fully saturated state under a vertical stress  $\sigma_v$  of 1.6 MPa (indicated by the measured  
2 suction equal to zero).

3 The results during soaking with SBCW and during injection of NaCl solution at 30 g/L-  
4 concentration are presented in the inset diagram. It can be observed that soaking induced  
5 negligible compression ( $\Delta e = 0.619 - 0.617$ ) while injection of NaCl at 30 g/L-concentration  
6 produced a slightly higher compression ( $\Delta e = 0.617 - 0.610$ ).

7 For further analysis of the chemical effect during the injection stage, volume changes during the  
8 last loading step from  $\sigma_v = 1.6 - 2.4$  MPa before soaking, during soaking with SBCW and during  
9 injection of NaCl solution at 30 g/L-concentration are detailed in Figure 4. It is observed that the  
10 volume change during soaking followed the same slope as the secondary compression in the last  
11 loading step, indicating a continuous creep behavior without any chemical effect. During  
12 injection, several mechanisms are involved: (i) unloading due to the application of injection  
13 pressure  $P_{CPV_{max}} = 1$ MPa; (ii) reloading due to the removal of injection pressure; (iii) creep; and  
14 (iv) chemical effects due to changes in pore water chemical composition. The total compression  
15 identified in Figure 3 is the combined effect of all the four mechanisms.

16 Figure 5a zooms the circled part in Figure 4. The injection pressure variation is shown in Figure  
17 5b. Considering that the maximum value of injection pressure  $P_{CPV_{max}} = 1$ MPa is much lower  
18 than the *in situ* vertical effective stresses  $\sigma'_{v0} = 2.4$  and 3.2 MPa for Boom Clay and Ypresian  
19 Clays, respectively, the unloading and reloading during the application and the removal of  
20 injection pressure are rather in the elastic zone where the volume change induced can be  
21 assumed to be recoverable. Thereby, the total void ratio change during this stage is related to  
22 creep and chemical effects only:

$$\Delta e_{inj} = \Delta e_{C\alpha} + \Delta e_{Ch}$$

with  $\Delta e_{C\alpha} = -C_{\alpha e} \Delta \log t_{inj}$ . Note that  $\Delta \log t_{inj} = \log(t_2/t_1)$  is the difference in logarithm of time at the end  $t_2$  and at the beginning  $t_1$  of the injection which are counted since the beginning of the last loading up to  $\sigma'_{v0}$  (Figure 5). The chemically-induced void ratio change  $\Delta e_{Ch}$  can therefore be deduced from the total void ratio change  $\Delta e_{inj}$  and the creep-induced void ratio change  $\Delta e_{C\alpha}$ .

The subsequent unloading, with NaCl solution at 30 g/L-concentration as “new” pore water, from  $\sigma'_{v0} = 2.4$  MPa (I) to 0.05 MPa (II) gave rise to significant swell: the void ratio  $e$  reached a value larger than its initial one ( $e_0 = 0.723$ ). The reloading path (II-III) formed a hysteretic loop with the unloading path (I-II). The second unloading path (III-IV) was quite similar to the first one (I-II).

From the compression curve, the compression slope  $c'_c$  and the swelling slope  $c'_s$  were determined for each loading step. The consolidation curve of each loading step was used to determine the consolidation coefficient  $C_v$  following the Casagrande method ( $C_v = 0.197H^2/t_{50}$  where  $H$  is the drainage length;  $t_{50}$  is the time corresponding to 50% of consolidation degree), the hydraulic conductivity  $k$  ( $k = C_v \rho_f g / E_{\alpha d}$ ; where  $\rho_f$  is the unit mass of fluid;  $g$  is the acceleration due to gravity;  $E_{\alpha d}$  is the oedometric modulus) and intrinsic permeability  $K$  ( $K = k\mu/\rho_f g$  where  $\mu$  is the fluid dynamic viscosity). The coefficient of secondary compression/swelling  $C_{\alpha e}$  defined as the corresponding slope  $-\Delta e/\Delta \log t$  of the consolidation curve was also determined.

### 3.2. Volume change during solution injection

The chemically-induced volume change  $\Delta \varepsilon_{vCh}$  was plotted versus the pore water  $\text{Na}^+$  concentration in Figure 6. It appears that for Boom Clay, injecting distilled water induced soil swelling while injecting NaCl solution at 30 g/L-concentration induced soil compression.

1 Moreover, the higher the pore water  $\text{Na}^+$  concentration, the higher the chemically-induced  
2 compression. For Ypresian Clays, injecting NaCl solution at 15 g/L-concentration caused soil  
3 swelling while injecting NaCl solution at 30g/L-concentration caused soil compression.  
4 Furthermore, a linear relationship was observed between the chemically-induced volume change  
5 and the pore water  $\text{Na}^+$  concentration for both Boom Clay and Ypresian Clays, the two  
6 relationships being parallel.

### 7 *3.3. Compressibility and swelling behavior*

8 Figure 7 and Figure 8 show the compression slope  $c'_c$ , swelling slope  $c'_s$  and oedometric modulus  
9  $E_{\text{oed}}$  of each loading/unloading step versus the mean vertical stress  $\sigma_v$ . As the second unloading  
10 (III-IV) curve is similar to the first one (I-II), only the results of unloading I-II and reloading II-  
11 III are presented in these figures.

12 For Boom Clay, a clear influence of pore water salt concentration on the compression and  
13 swelling behavior was identified. The sample with distilled water (test BO1) showed the largest  
14  $c'_c$  and  $c'_s$  values. These values decreased in the order of samples with SBCW (test BO2), NaCl  
15 solution at 15 and 30 g/L-concentrations (tests BO3 and BO4). The highest  $E_{\text{oed}}$  was found for the  
16 samples with NaCl solution, and followed by those for the samples with SBCW and distilled  
17 water.

18 On the other hand, the influence of pore water salt concentration decreased as the differences  
19 between the curves was reduced with increasing vertical stress  $\sigma_v$  (from  $\sigma_v \approx 0.5$  MPa for the  
20 compression index  $c'_c$ ). Furthermore, it is observed that the differences in  $c'_c$ ,  $c'_s$  and  $E_{\text{oed}}$   
21 between the samples with NaCl solution at 15 and 30 g/L-concentrations are negligible with  
22 respect to those between the samples with distilled water and SBCW, and between the samples

1 with SBCW and NaCl solution at 15 g/L-concentration. For Ypresian Clays, only the NaCl  
2 solution at 15 and 30 g/L-concentrations were considered, and the differences in  $c'_c$ ,  $c'_s$  and  $E_{\alpha d}$   
3 between the two corresponding samples were not clear.

4 The consolidation coefficient  $C_v$  for each loading step during reloading path II-III is shown in  
5 Figure 9 versus the mean void ratio  $e$  and the mean vertical stress  $\sigma_v$ . It is observed that  $C_v$   
6 decreased with compression (increasing  $\sigma_v$ , decreasing  $e$ ) and then increased again. A clear  
7 chemical effect was observed for both soils as  $C_v$  increased with increasing pore water  $\text{Na}^+$   
8 concentration. At a given void ratio or vertical stress, the difference in  $C_v$  between Ypresian  
9 Clays samples with NaCl solution at 15 and 30 g/L-concentrations is higher than for Boom Clays  
10 samples.

11 The variations of the coefficient of secondary compression/swelling  $C_{\alpha e}$  with void ratio  $e$  at the  
12 end of each step is shown in Figure 10. As  $C_{\alpha e} = -\Delta e / \Delta \log t$ , it is positive during loading and  
13 negative during unloading. A clear pore water chemical effect was observed for Boom Clay upon  
14 reloading (II-III): the higher the salt concentration, the lower the value of  $C_{\alpha e}$  at a given void  
15 ratio. Moreover, the chemical effect was negligible at (i) low void ratio  $e$  (high vertical stress  $\sigma_v$ )  
16 and increased with increasing  $e$  (decreasing  $\sigma_v$ ); (ii) high concentration and increased with  
17 decreasing concentration. However, the chemical effect on  $C_{\alpha e}$  upon unloading was not clear.

18 The correlations between the coefficient of secondary compression  $C_{\alpha e}$  and compression slope  
19  $c'_c$  and between the coefficient of secondary swelling  $C_{\alpha e}$  and swelling slope  $c'_s$  are shown in  
20 Figure 11. A linear relationship between  $C_{\alpha e}$  and  $c'_c$  was attempted:  $C_{\alpha e}/c'_c = 0.024$  for Boom  
21 Clay and 0.015 for Ypresian Clays, while a bi-linear relationship between  $C_{\alpha e}$  and  $c'_s$  was  
22 verified. The chemical effect on these correlations was not clear.

### 1 3.4. Permeability

2 The intrinsic permeability  $K$  measured at the end of injection phase by the constant-head method  
3 and that determined by back-analysis using the consolidation curve of each reloading step (phase  
4 II-III) are shown in Figure 12 in a logarithmic scale as function of void ratio  $e$ . Linear  
5 relationships were obtained in this semi-logarithmical plane for Boom Clay and Ypresian Clays.  
6 Moreover, these relationships are parallel for each clay. Noticeable chemical effect was  
7 identified for both soils: the sample with higher pore water  $\text{Na}^+$  concentration showed higher  $K$ ,  
8 even though the difference between Boom Clay samples with distilled water and SBCW was not  
9 clear.

### 10 3.5. Microstructure observation

11 Figure 13 and Figure 14 show the MIP results for Boom Clay and Ypresian Clays, respectively.  
12 The intruded mercury void ratio  $e_m$  is defined as the ratio of mercury intrusion volume  $V_m$  to soil  
13 solid volume  $V_s$ . Note that the MIP technique can only cover a limited range of pore size, from  
14 300 to 0.005  $\mu\text{m}$  in apparent mercury entrance diameter  $D$  (corresponding to a pressure range  
15 from 0.1 to 200 MPa).

16 Intact Boom Clay showed mono-modal pore-size distribution (Figure 13b) with a dominant pore  
17 size around  $D = 0.15 \mu\text{m}$  - meso-pore following Romero (1999). After “replacing” the *in situ*  
18 pore water by NaCl solution at 15 (test BO3) or 30 g/L-concentrations (test BO4) and applying  
19 an unloading-reloading-unloading path under low vertical stresses ( $0.05 \leq \sigma_v \leq 3.2 \text{ MPa}$ ), the  
20 pore size distributions became more or less bi-modal with creation of a population of micro-pore  
21 around  $D = 0.06 \mu\text{m}$ , the population of meso-pore being at  $D = 0.25 \mu\text{m}$  that was slightly larger  
22 than the initial one. It appears also that under chemical and mechanical loadings (i) the pores

1 smaller than  $D = 0.06 \mu\text{m}$  were not affected; (ii) the density of intermediate pores ( $0.06 \leq D \leq$   
2  $0.2 \mu\text{m}$ ) was reduced and (iii) the density of larger pores ( $D \geq 0.3 \mu\text{m}$ ) was increased. It is also  
3 observed that the density of the meso-pore population of BO4 sample (with NaCl solution at 30  
4 g/L-concentration) is higher than that of BO3 (with NaCl solution at 15 g/L-concentration). Note  
5 that the populations appeared around  $D = 100 \mu\text{m}$  may correspond to macro-fissures created  
6 during sample preparation.

7 YO1 and YO2 samples with NaCl solution at 15 and 30 g/L-concentrations, respectively, show  
8 dominant micro-pores of  $0.10 \mu\text{m}$  diameter. This dominant pore size is significantly smaller than  
9 that of the meso-pore populations of BO3 and BO4 samples.

10 Figure 15 and Figure 16 show the SEM photos for Boom Clay and Ypresian Clays, respectively,  
11 on the section perpendicular to the bedding plane marked by black lines. On the left side are the  
12 photos in dimensions of  $125 \times 100 \mu\text{m}$ , except for YO2 with dimensions of  $250 \times 200 \mu\text{m}$ . These  
13 figures were then zoomed to reach dimensions of  $25 \times 20 \mu\text{m}$ , except for YO2 with dimensions of  
14  $62.5 \times 50 \mu\text{m}$ , on the right side. Well-developed preferential alignments of clay particles in the  
15 direction parallel to the bedding plane for both Boom Clay and Ypresian Clays were observed.

16 Comparing SEM photos of intact and BO3-4 samples shows that more clay aggregates were  
17 formed with a diameter around  $10 \mu\text{m}$  in BO3-4 sample. Clay particles seemed to be thicker as a  
18 result of more stacked-up clay layers, and large inter-particle pores and small intra-particle ones  
19 were formed. Boom Clay after test became less dispersed as compared with its initial  
20 microstructure. Some connected pores of  $1 \mu\text{m}$  diameter in Boom Clay (Figure 15c, d, e, f) and  
21  $2\text{-}5 \mu\text{m}$  in Ypresian Clays (Figure 16) were identified.



## 1 **4. Discussion**

### 2 *4.1. Pore water changes during the injection phase*

3 During the injection phase, the chemically-induced swelling by distilled water (test BO1),  
4 compressions by NaCl solutions at 15 (test BO3) and 30 g/L-concentrations (test BO4) for Boom  
5 Clay, and also compression by NaCl solution at 30 g/L-concentration (test YO2) for Ypresian  
6 Clays are in agreement with the common observations in terms of pore water salt concentration  
7 effects on the volume change behavior of active clays (Castellanos et al., 2008; Di Maio, 1996;  
8 Musso et al., 2013). These volume changes can be considered as osmotic swelling/consolidation  
9 as described by the diffuse double layer theory (Chapman, 1913; Gouy, 1910) or as osmotic  
10 suction changes  $\Delta\pi$ : as the salt concentration increases, the double layer thickness decreases and  
11 the osmotic suction  $\pi$  increases, leading to shrinkage of clay particles and hence volume change  
12 in the macroscopic level. However, the chemically-induced swells observed on Boom Clay  
13 sample with SBCW and Ypresian Clays sample with NaCl solution at 15 g/L-concentration  
14 suggest that other mechanisms are involved in this “chemically-induced” volume change. Further  
15 studies are then needed to clarify this point.

### 16 *4.2. Compressibility and swelling capacity*

17 In general, the hydro-mechanical behavior of clays is governed by the competing physico-  
18 chemical and mechanical effects (Cui et al., 2002, Le et al., 2011). The term “mechanical” refers  
19 to particles interactions through their direct contacts, while the term “physico-chemical” denotes  
20 interactions through the diffuse double layer (Robinson and Allam, 1998). Thus, for each loading  
21 or unloading path, there is a threshold stress  $\sigma_s$  dividing the compression curve into two zones,  
22 each one being governed by one effect (Figure 17): (i) upon unloading, when the external stress

1 is higher than the repulsive force related to the soil particles-water interaction (physico-chemical  
2 effect) or  $\sigma_v > \sigma_{s1}$  for I-II path or  $\sigma_{s3}$  for III-IV path, low swelling volume change occurs;  
3 otherwise ( $\sigma_v < \sigma_{s1}$  or  $\sigma_{s3}$ ), higher swelling volume change can be expected; (ii) upon reloading,  
4 when the external stress is lower than the matric suction related to the physico-chemical effect  
5 ( $\sigma_v < \sigma_{s2}$ ), this external stress is balanced by the repulsive force, leading to a small volume  
6 decrease; on the contrary, when the external stress becomes higher ( $\sigma_v > \sigma_{s2}$ ), the mechanical  
7 effect becomes dominant giving rise to larger volume decrease (Cui et al., 2013; Nguyen, 2013).  
8 For Boom Clay and Ypresian Clays, the values of threshold stress  $\sigma_s$  are practically similar,  
9 estimated at about  $\sigma_{s1} \approx \sigma_{s3} \approx 1.5$  MPa upon unloading and  $\sigma_{s2} \approx 0.5$  MPa upon reloading  
10 (Nguyen, 2013). .

11 Deng et al. (2012) investigated the secondary compression behavior of Boom Clay and also  
12 observed a linear relationship between  $C_{\alpha e}$  and  $c'_c$ , and a bi-linear relationship between  $C_{\alpha e}$  and  
13  $c'_s$ . These authors also related this bi-linearity to the competition between two mechanisms:  
14 mechanically dominated rebounding and physico-chemically dominated swelling. The linearity  
15 during reloading was however explained by the mechanical effect that is supposed to be the only  
16 governing mechanism. If we admit the previous interpretations, a bi-linearity between  $C_{\alpha e}$  and  
17  $c'_c$  should also be obtained, instead of linearity. The linear relationship between  $C_{\alpha e}$  and  $c'_c$   
18 obtained during the reloading path in Deng et al. (2012) and in this study could be explained by  
19 lack of some  $C_{\alpha e}$  values corresponding to the first reloading steps under  $\sigma_v < \sigma_{s2} \approx 0.5$  MPa  
20 where hydro-mechanical behavior is expected to be governed by the physico-chemical effect.

21 Robinson and Allam (1998) discussed the mechanical and physico-chemical effects on the  
22 consolidation coefficient  $C_v$ , and concluded that the increase of  $C_v$  with increasing  $\sigma_v$  is due to

1 the dominance of mechanical effect while the decrease of  $C_v$  is related to the increasing physico-  
2 chemical effect. This is consistent with the variations of  $C_v$  shown in Figure 9. On the other  
3 hand, it has been commonly observed that (i)  $C_v$  decreases with increasing liquid limit  $LL$   
4 (Carrier, 1985; Raju et al., 1995; Robinson and Allam, 1998; Sridharan and Nagaraj, 2004); and  
5 (ii)  $LL$  increases with decreasing salt concentration (Di Maio, 1996; Gajo and Maines, 2007).  
6 This is also consistent with the results obtained in this study: the higher the pore water salt  
7 concentration, the higher the consolidation coefficient  $C_v$ .

8 It was observed in this study that the higher the pore water salt concentration, the higher the  
9 values of oedometer modulus  $E_{\alpha d}$  and coefficient of consolidation  $C_v$ , the lower the values of  
10 compression/swelling slope  $c'/c'_s$  and secondary compression coefficient  $C_{\alpha e}$ . This chemical  
11 effect was attenuated with increasing vertical stress  $\sigma_v$ . This is in agreement with the previous  
12 results on both natural clays (Deng et al., 2011a; Wakim, 2005) and reconstituted swelling clays  
13 (Di Maio and Fenelli, 1994; Di Maio, 1996; Di Maio et al., 2004; Rao and Thyagaraj, 2007).

14 Basically, the pore water chemical composition effect should be more pronounced in the stress  
15 range where physico-chemical effects dominate. Indeed, when considering the chemical effects  
16 on soil compressibility and swelling capacity upon unloading (I-II and III-IV), it is observed that  
17 the variations of these parameters with different “new” pore waters are similar (the curves are  
18 parallel) until the threshold stress  $\sigma_{s1} \approx 1.5$  MPa (Figure 17). Below the values of threshold stress  
19  $\sigma_s$ , the curves start to have different slopes, increasing thereby the difference between the  
20 parameters with different “new” pore waters. Upon reloading (II-III), when the vertical stress  
21 was still below the threshold stress  $\sigma_v < \sigma_{s2} \approx 0.5$  MPa, the difference between the parameters  
22 with different “new” pore waters are large while beyond the threshold  $\sigma_s$ , the gap is reduced with  
23 the curves approaching each other and become parallel again. This illustrates again that the pore

1 water chemical composition effects exhibit mainly in the stress range where the hydro-  
2 mechanical behaviour is dominated by physico-chemical effects.

3 It was found on Boom Clay that the increase of chemical effect with increasing pore water  
4 salinity was limited to a certain salt concentration. This observation was also reported in Di Maio  
5 et al. (2004) for several reconstituted clays of different smectite contents. Di Maio et al. (2004)  
6 also observed that the stabilizing concentration for a more expansive soil is lower. Thereby, the  
7 chemical effects on Ypresian Clays (containing higher smectite) should be stabilized at a lower  
8 pore water salt concentration than on Boom Clay. This is confirmed by that fact that the  
9 differences in  $E_{\alpha d}$ ,  $c'_c$ ,  $c'_s$ , and  $C_{\alpha e}$  of Ypresian Clays between NaCl solution at 15 and 30 g/L-  
10 concentrations were found to be negligible.

#### 11 4.3. Permeability

12 In the phase of *in situ* pore water replacement, it was observed that the higher the salt solution  
13 concentration, the higher the soil compression, and also the higher intrinsic permeability.  
14 Because, in general, permeability decreases with decrease of void ratio, the increased  
15 permeability must be due to other factors involved in this process.

16 Fernandez and Quigley (1985), Cui et al. (2003), while respectively studying a natural clay and  
17 the compacted Jossigny silt with distilled water and non-polar fluids, observed the importance of  
18 percolating fluid dielectric constant  $D$ : significant aggregation was observed with lower fluid  
19 dielectric constant, that led to a drastic increase in permeability. This is consistent with the  
20 results obtained in the present study because according to Wang and Anderko (2001), the  
21 dielectric constant  $D$  decreases in the order of distilled water, SBCW, NaCl solution at 15 and 30  
22 g/L-concentrations, and this is also the increasing order of measured permeability.

1 On the other hand, previous works on FEBEX bentonite (Castellanos et al., 2008), MX-80  
2 bentonite (Karnland et al., 1992; Villar, 2005), Na-Montmorillonite-sand mixtures (Studds et al.,  
3 1998), compacted Montmorillonite and Illite (Rolfe and Aylmore, 1977) and Friedland Ton clay  
4 - a natural clay with 45 % smectite (Push, 2001) also evidenced a clear increase in hydraulic  
5 conductivity with the increasing saline concentration of permeating fluid. Following Castellanos  
6 et al. (2008), several mechanisms can be involved, such as (i) modification of pore size  
7 distribution resulting from clay matrix swelling, and (ii) variations of water molecule mobility  
8 associated with exchangeable cations adsorbed on the clay sheet surfaces or in the diffuse double  
9 layer. Consequently, when the pore water salt concentration increases, there is reduction in the  
10 swelling capacity of clay particles, thus increasing large flow channel (inter-aggregate) size,  
11 causing permeability increase. On the contrary, any decrease in pore water salt concentration  
12 produces higher development of diffuse edouble layer, causing a decrease in permeability as a  
13 result of the decrease of the size of large flow channels.

14 The explanations above lead to the same conclusion in terms of microstructure changes: the size  
15 of large pores is increased by clay aggregation due to the pore water salt concentration increase,  
16 and the soil permeability is increased. After percolation, the influence of pore water salt  
17 concentration on permeability remained the same upon unloading-reloading-unloading: the  
18 higher the salt concentration, the higher the permeability. Moreover, the same slope of  $e - \log K$   
19 curves was observed for each soil with different pore water chemical compositions, suggesting  
20 that the chemical effect on permeability was not affected by the vertical stress within the range  
21 considered. This means that the microstructure changes upon percolation can be considered as  
22 preserved during the unloading-reloading-unloading paths (I-II-III-IV). In other words, clay  
23 aggregation due to percolating NaCl solution at 15 and 30 g/L-concentrations (higher than the *in*

1 *situ* pore water salinity) was preserved until the end of the tests. The microstructure analyses by  
2 MIP and SEM confirmed this conclusion (see Figures 13-16).

### 3 **5. Conclusions**

4 The pore water salt concentration effects on the behaviors of natural Boom Clay and Ypresian  
5 Clays were investigated in terms of volume change, compressibility, swelling capacity,  
6 consolidation, creep and permeability. The results allow the following conclusions to be drawn:

- 7 (1) Percolation of a higher salt concentration solution induced soil compression (osmotic  
8 consolidation) while percolation of distilled water resulted in soil swelling (osmotic  
9 swelling); this is in agreement with the diffuse double layer theory;
- 10 (2) The higher the pore water salt concentration, the higher the oedometric modulus  $E_{\text{oed}}$  and  
11 the coefficient of consolidation  $C_v$ , the lower the compression/swelling slope  $c'_c/c'_s$  and  
12 the secondary compression coefficient  $C_{\alpha e}$ ; this is also in agreement with the diffuse  
13 double layer theory;
- 14 (3) A higher chemical effect on the coefficient of consolidation  $C_v$  was identified for  
15 Ypresian Clays that have a higher smectite content than Boom Clay;
- 16 (4) The higher the pore water salt concentration, the higher the intrinsic permeability  $K$  due  
17 to the microstructure changes by clay aggregation - larger flow channels are formed as  
18 observed in the MIP and SEM analyses;
- 19 (5) The chemical effect on permeability was observed to be independent of vertical stress as  
20 the chemically-induced microstructure changes were preserved under mechanical  
21 loading;

1 (6) The pore water chemical composition effects on the compressibility and swelling  
2 capacity parameters were attenuated with increasing vertical stress  $\sigma_v$  upon loading/  
3 unloading; bi-linear relationships between  $C_{ae}$  and  $c'_s$  were identified for Boom and  
4 Ypresian Clays;  $C_v$  showed a decrease followed by an increase with increasing  $\sigma_v$  for  
5 both soils. This evidenced the competition between the physico-chemical effect and the  
6 mechanical effect as identified by Cui et al. (2013) and Nguyen (2013). This also showed  
7 that the pore water salt concentration effect prevails only in the region where the hydro-  
8 mechanical behavior is dominated by the physico-chemical effect;

9 (7) The variations of compressibility and swelling capacity parameters showed that the  
10 chemical effects stabilized at a certain concentration, and this limit concentration seemed  
11 to decrease with increasing active clay minerals like the smectite.

12 Future characterizations on the pore-water chemical composition effects on the hydro-  
13 mechanical behaviours of natural stiff clays, Belgian candidate for host formation of geological  
14 radioactive waste disposal, can go further by:

15 (i) applying a more severe criterion of pore-water replacement, for example, by collecting  
16 and measuring electrical conductivity of the expelled water at the outlet upon injection  
17 phase, instead of a simple volumic criterion at the inlet as in the present study;

18 (ii) applying a better load path with smaller loading/unloading steps around the swelling  
19 (threshold) stress  $\sigma_s$ , so that chemical effect on the swelling stress could be investigated  
20 without doing separated swelling tests;

21 (iii) testing Ypresian Clays with distilled water and lower salt concentrations, as for Boom  
22 Clay in the present study, to fully investigate chemical effect on this formation. On the

1 other side, higher salt concentrations (> 30 g/L) should tested as well on both formations  
2 to confirm the stabilizing concentration of chemical effects on the hydro-mechanical  
3 behaviours, and thus give a more complete information to the end-users on the variation  
4 ranges of the hydro-mechanical parameters under these effects for short- and long-term  
5 safety assessments.

6

## 7 **6. References**

- 8 AFNOR, 1992. Sols: reconnaissance et essai. Analyse granulométrique des sols. Méthode par  
9 sédimentation.
- 10 AFNOR, 1997. Sols: reconnaissance et essais. Essais œdométriques. Partie 1: Essai de  
11 compressibilité sur matériaux fins quasi saturés avec chargement par paliers.
- 12 ASTM, 2006. Standard Practice for Classification of Soils for Engineering Purposes (Unified  
13 Soil Classification System) D 2487 - 06.
- 14 Baldi, G., Hueckel, T., Pellegrini, R., 1988. Thermal volume changes of the mineral-water  
15 system in low-porosity clay soils. Canadian geotechnical journal 25, 807–825.
- 16 Burland, J.B., 1990. On the compressibility and shear strength of natural clays. Géotechnique 40,  
17 329–378.
- 18 Cammaer, C., Cockaerts, G., Schiltz, M., 2009. Drilling and géological report ON-KALLO-1,  
19 ON-KALLO-2, ON-KALLO-3 ( No. Samsuffit R2009-01). ONDRAF/NIRAS.
- 20 Carrier, W.D., 1985. Consolidation Parameters Derived From Index Tests. Geotechnique 35,  
21 211–213.
- 22 Castellanos, E., Villar, M.V., Romero, E., Lloret, A., Gens, A., 2008. Chemical impact on the  
23 hydro-mechanical behaviour of high-density FEBEX bentonite. Physics and Chemistry of the  
24 Earth 33, S516–S526.
- 25 Chapman, D.L., 1913. A contribution to the theory of electrocapillarity. Philosophical Magazine  
26 25, 475–481.
- 27 Chen, J., Anandarajah, A., Inyang, H., 2000. Pore fluid properties and compressibility of  
28 kaolinite. Journal of geotechnical and geoenvironmental engineering 126, 798–807.
- 29 Coll, C., 2005. Endommagement des roches argileuses et perméabilité induite au voisinage  
30 d’ouvrage souterrains. Université Joseph Fourier-Grenoble 1, Grenoble.
- 31 Coll, C., Collin, F., Radu, J.P., Illing, P., Schroeder, C., Charlier, R., 2008. Longterm behavior of  
32 Boom Clay. Influence of clay viscosity on the far field pore pressure distribution. ULg.



- 1 Cui, Y.J., Yahia-Aissa, M. and Delage, P., 2002. A model for the volume change behaviour of  
2 heavily compacted swelling clays. *Engineering Geology* 64 (2-3), 233-250.
- 3 Cui, Y.J., Delage, P., Alzoghbi, P., 2003. Retention and transport of a hydrocarbon in a silt.  
4 *Géotechnique* 53, 83–91.
- 5 Cui, Y.J., Nguyen, X.P., Tang, A.M., Li, X.L., 2013. An insight into the unloading/reloading  
6 loops on the compression curve of saturated clays. *Applied Clay Science*. Accepted for  
7 publication.
- 8 Daupley, X., 1997. Etude du potentiel de l'eau interstitielle d'une roche argileuse et de relations  
9 entre ses propriétés hydriques et mécaniques. Application aux argilites de Torcien de la région de  
10 Tournemire. Ecole Nationale Supérieure des Mines de Paris, Géologie de l'Ingénieur.
- 11 De Craen, M., Wang, L., van Geet, M., Moors, H., 2004. Geochemistry of Boom Clay pore  
12 water at the Mol site - Status 2004 (Scientific report No. SCK•CEN-BLG-990-04/MDC/P-48).  
13 SCK•CEN, Waste & Disposal Department, Boeretang 200, 2400 Mol, Belgium.
- 14 De Craen, M., Wemaere, I., Labat, S., van Geet, M., 2006. Geochemical analyses of Boom Clay  
15 pore water and underlying aquifers in the Essen-1 borehole ( No. SCK•CEN-ER-19. 06/MDC/P-  
16 47). SCK•CEN.
- 17 Delage, P., Marcial, D., Cui, Y.J., Ruiz, X. (2006). Ageing effects in a compacted bentonite: A  
18 microstructure approach, *Géotechnique* 56 (5), 291-304.
- 19 Delage, P., Le, T. T., Tang, A. M., Cui, Y. J. & Li, X. L. (2007), 'Suction effects in deep boom  
20 clay block samples', *Géotechnique* 57 (1), 239–244.
- 21 Deng, Y.F., Cui, Y.J., Tang, A.M., Nguyen, X.P., Li, X.L., van Geet, M., 2011a. Investigating  
22 the pore-water chemistry effects on the volume change behaviour of Boom clay. *Physics and  
23 Chemistry of the Earth* 36, 1905 – 1912.
- 24 Deng, Y.F., Tang, A.M., Cui, Y.J., Nguyen, X.P., Li, X.L., Wouters, L., 2011b. Laboratory  
25 hydro-mechanical characterisation of Boom Clay at Essen and Mol. *Physics and Chemistry of  
26 the Earth* 36, 1878 – 1890.
- 27 Deng, Y.F., Tang, A.M., Cui, Y.J., Li, X.L., 2011c. Study on the hydraulic conductivity of Boom  
28 clay. *Canadian Geotechnical Journal* 48, 1491–1470.
- 29 Deng, Y.F., Cui, Y.J., Tang, A.M., Li, X.L., Sillen, X., 2012. An experimental study on the  
30 secondary deformation of Boom Clay. *Applied Clay Science* 59-60, 19-25.
- 31 Di Maio, C., 1996. Exposure of bentonite to salt solution: osmotic and mechanical effects.  
32 *Géotechnique* 46, 695–707.
- 33 Di Maio, C., 1998. Discussion: Exposure of bentonite to salt solution: osmotic and mechanical  
34 effects. Di Maio, C., 1996. *Géotechnique* 46 (4), 695-707. *Géotechnique* 48, 433–436.
- 35 Di Maio, C., Fenelli, G.B., 1994. Residual strength of kaolin and bentonite: the influence of their  
36 constituent pore fluid. *Géotechnique* 44, 211–226.
- 37 Di Maio, C., Santoli, L., Schiavone, P., 2004. Volume change behavior of clays: the influence of  
38 mineral composition, pore fluid composition and stress state. *Mechanics of Materials* 36, 435–  
39 451.
- 40 Fernandez, F., Quigley, R.M., 1985. Hydraulic conductivity of natural clays permeated with

- 1 simple liquid hydrocarbons. *Canadian Geotechnical Journal* 22, 205–214.
- 2 Gajo, A., Loret, B., 2007. The mechanics of active clays circulated by salts, acids and bases.  
3 *Journal of the Mechanics and Physics of Solids* 55, 1762–1801.
- 4 Gajo, A., Maines, M., 2007. Mechanical effects of aqueous solutions of inorganic acids and  
5 bases on a natural active clay. *Géotechnique* 57, 687–699.
- 6 Gouy, G., 1910. Sur la constitution de la charge électrique à la surface d'un électrolyte. *Année  
7 Physique (Paris)* 9, 457–468.
- 8 Karnland, O., Pusch, R., Sandén, T., 1992. The importance of electrolyte on the physical  
9 properties of MX-80 bentonite ( No. Report AR 92-35). SKB, Stockholm (in Swedish).
- 10 Le, T.T., Cui, Y.J., Munoz, J.J., Delage, P., Tang, A.M., Li, X.L., 2011. Studying the stress-  
11 suction coupling in soils using an oedometer equipped with a high capacity tensiometer. *Front.  
12 Archit. Civ. Eng.China*, 5(2), 160–170.
- 13 Lima, A., 2011. Thermo-Hydro-Mechanical behaviour of two deep Belgian clay formations:  
14 Boom and Ypresian clays. Universitat Politècnica de Catalunya, Spain.
- 15 Loret, B., Hueckel, T., Gajo, A., 2002. Chemo-mechanical coupling in saturated porous media:  
16 elastic–plastic behaviour of homoionic expansive clays. *International Journal of Solids and  
17 Structures* 39, 2773–2806.
- 18 Mitchell, J.K., Soga, K., 2005. *Fundamentals of soil behavior*. John Wiley & Sons, Inc.
- 19 Mokni, N., Romero, E., Olivella, S., 2012. Joint effect of osmotic and matric suction on hydro-  
20 mechanical behavior of Boom Clay. Presented at the Clay in natural and engineered barriers for  
21 radioactive waste confinement. 5th international meeting, Montpellier.
- 22 Musso, G., Romero, E., Vecchia, G.D., 2013. Double-structure effects on the chemo-hydro-  
23 mechanical behaviour of a compacted active clay. *Géotechnique* 63, 206–220.
- 24 Nguyen, X.P., 2013. Étude du comportement chimico-hydro-mécanique des argiles raides dans  
25 le contexte du stockage géologique de déchets radioactifs. Ecole des Ponts ParisTech.
- 26 Olson, R.O., Mesri, G., 1970. Mechanisms controlling compressibility of clays. *Journal of Soil  
27 Mechanics and Foundation Division, Proceeding of the American Society of Civil Engineers* 6,  
28 1863–1878.
- 29 ONDRAF, 2001. *Safety Assessment and Feasibility Interim Report 2 ( No. SAFIR2)*. ONDRAF.
- 30 Push, R., 2001. Experimental study of the effect of high porewater salinity on the physical  
31 properties of a natural smectitic clay ( No. Technical Report TR-01-07). SKB, Stockholm.
- 32 Raju, N.P.S.R., Pandian, N.S., Nagaraj, T.S., 1995. Analysis and Estimation of Coefficient of  
33 Consolidation. *Geotechnical Testing Journal* 18, 252–258.
- 34 Rao, S.M., Thyagaraj, T., 2007. Swell-compression behavior of compacted clays under chemical  
35 gradients. *Canadian Geotechnical Journal* 44, 520–532.
- 36 Robinson, R.G., Allam, M.M., 1998. Effect of clay mineralogy on coefficient of consolidation.  
37 *Clays and Clay Minerals* 46, 596–600.
- 38 Rolfe, P.F., Aylmore, L.A.G., 1977. Water and salt flow through compacted clays: I.  
39 Permeability of compacted illite and montmorillonite. *Soil Science Society of America Journal*

- 1 41, 489–495.
- 2 Romero, M.E., 1999. Characterisation and thermo-hydro-mechanical behaviour of unsaturated  
3 Boom clay: an experimental study. Universitat Politècnica de Catalunya.
- 4 Sridharan, A., Nagaraj, B., 2004. Coefficient of Consolidation and its Correlation with Index  
5 Properties of Remolded Soils. *Geotechnical Testing Journal* 27, 1–6.
- 6 Sridharan, A., Rao, G.V., 1973. Mechanisms controlling volume change of saturated clays and  
7 the role of the effective stress concept. *Géotechnique* 23, 359–382.
- 8 Studds, P.G., Stewart, D.I., Cousens, T.W., 1998. The effects of salt solutions on the properties  
9 of bentonite–sand mixtures. *Clay Minerals* 33, 651–660.
- 10 van Marcke, P., 2009. Existing information on the Ypresian clays, in: *Meeting on the THMC*  
11 *Characterisation of Ypresian Clays*.
- 12 van Marcke, P., Laenen, B., 2005. The Ypresian clay as possible host rock for radioactive waste  
13 disposal: An evaluation. ONDRAF.
- 14 Vandenberghe, N. (2011), *Qualitative & quantitative mineralogical analyses of ypresian clay*,  
15 Technical report, KU Leuven.
- 16 Villar, M.V., 2005. MX-80 bentonite. Thermo-hydro-mechanical characterisation performed at  
17 CIEMAT in the context of the prototype project. ( No. Informes Técnicos 1053). CIEMAT,  
18 Madrid.
- 19 Wahid, A.S., Gajo, A., Di Maggio, R., 2011a. Chemo-mechanical effects in kaolinite. Part 1:  
20 prepared samples. *Géotechnique* 61, 439–447.
- 21 Wahid, A.S., Gajo, A., Di Maggio, R., 2011b. Chemo-mechanical effects in kaolinite. Part 2:  
22 exposed samples and chemical and phase analyses. *Géotechnique* 61, 449–457.
- 23 Wakim, J., 2005. Influence des solutions aqueuses sur le comportement mécanique des roches  
24 argileuses. Ecole Nationale Supérieure des Mines de Paris.
- 25 Wang, P., Anderko, A., 2001. Computation of dielectric constants of solvent mixtures and  
26 electrolyte solution. *Fluid phase equilibria* 186, 203–222.
- 27 Yukselen-Aksoy, Y., Kaya, A., Ören, A. H., 2008. Seawater effect on consistency limits and  
28 compressibility characteristics of clays. *Engineering Geology* 102, 54–61.

29

30

31

1 **List of Tables**

2 Table 1: Mineralogical compositions in Boom (BE83) and Ypresian (YK74) Clays

3 Table 2: Mineralogical composition in the clay fractions (fraction < 2  $\mu\text{m}$ )

4 Table 3: Physical and index properties of Boom and Ypresian Clays

5 Table 4: Pore-water chemical compositions for Boom and Ypresian Clays

6 Table 5: Test program

7 **List of Figures**

8 Figure 1: Particle-size distribution curves of Boom and Ypresian Clays

9 Figure 2: Typical loading procedure

10 Figure 3: Compression curve of test BO4 (Boom Clay, NaCl solution at 30 g/L-concentration)

11 Figure 4: Consolidation curve for the last loading step before soaking, soaking and injection of  
12 NaCl solution at 30 g/L-concentration in test BO4 (Boom Clay)

13 Figure 5: Void ratio (a) and injection pressure (b) changes during the injection phase in test BO4  
14 (Boom Clay, NaCl solution at 30 g/L-concentration)

15 Figure 6: Chemically induced volume change versus pore water  $\text{Na}^+$  concentration during  
16 solution injection

17 Figure 7: Variations of swelling (a) and compression (b) slopes with vertical stress

18 Figure 8: Variations of oedometric modulus with vertical stress during unloading I-II (a) and  
19 reloading II-III (b)

20 Figure 9: Variations of consolidation coefficient with a) void ratio and b) vertical stress during  
21 reloading

22 Figure 10: Variations of secondary compression/swelling coefficient with void ratio for Boom  
23 Clay and Ypresian Clays

24 Figure 11: Correlations between  $C_{\alpha\epsilon}$  and  $c'_c$  or  $c'_s$  for Boom Clay and Ypresian Clays

25 Figure 12: Variations of intrinsic permeability with void ratio

26 Figure 13: Results of MIP tests on Boom Clay: (a) cumulative curves, (b) derived curves

27 Figure 14: Results of MIP tests on Ypresian Clays: (a) cumulative curves, (b) derived curves

28 Figure 15: SEM photos of Boom Clay samples on the section perpendicular to bedding plane  
29 (marked by black lines)

30 Figure 16: SEM images of Ypresian Clays samples on the section perpendicular to the bedding  
31 plane (marked by black lines)

32 Figure 17: Threshold stress  $\sigma_s$

33

1

**Table 1: Mineralogical compositions in Boom (BE83) and Ypresian (YK74) Clays**

Minerals (wt %)	BE83 <sup>(1)</sup>	YK74 <sup>(2)</sup>
Clays	40	57
Illite	10	5
Kaolinite	30	3
Smectite		33
Illite/Smectite		12
Chlorite (or others)		4
Non clays	60	43
Quartz	60	31
Dolomite		0.8
Pyrite	Trace	0.4
K-feldspar	Trace	6
Plagioclase		5

2

3

**Table 2: Mineralogical composition in the clay fractions (fraction < 2 μm)**

Minerals (wt %)	BE83 <sup>(1)</sup>	YK74 <sup>(2)</sup>
Illite	20	10
Smectite	20	63
Illite/Smectite	20	22
Kaolinite	35	2
Others	5	3

4 (1): Deng et al. (2011a, 2011b, 2011c, 2012) and Nguyen (2013)

5 (2): Vandenberghe (2011)

6

7

1

**Table 3: Physical and index properties of Boom and Ypresian Clays**

Core	Depth (m)	$G_s$ (-)	LL (-)	PL (-)	PI (-)	VBS (g/100g)	CaCO <sub>3</sub> (%wt)	$e_0$ (-)	$w_0$ (%)	$S_{r0}$ (%)	$\rho_0$ (Mg/m <sup>3</sup> )
BE83 <sup>(1)</sup>	226.65 - 227.65	2.64	67.2	32.5	34.7	6.7	0.76	0.69 - 0.72	26.20 - 28.13	98.72 - 100	1.95 - 1.97
YK74	361.81 - 362.60	2.80	136.6	36.1	100.5	13.1	0.88	0.84	28.34 - 28.52	90.95 - 95.27	1.92 - 1.96

2 (1): Deng et al. (2011a, 2011b, 2011c, 2012) and Nguyen (2013).

3  $G_s$ : Specific gravity; LL: liquid limit; PL: plastic limit; PI: plasticity index, VBS: blue methylene value; CaCO<sub>3</sub>:  
4 carbonates content,  $e_0$ : initial void ratio;  $w_0$ : initial water content;  $S_{r0}$ : initial degree of saturation;  $\rho_0$ : initial  
5 density.

6

7

**Table 4: Pore-water chemical compositions for Boom and Ypresian Clays**

Salts	Concentration (10 <sup>-3</sup> M)		Concentration (g/L)	
	BE83 <sup>(1)</sup>	YK74 <sup>(2)</sup>	BE83 <sup>(1)</sup>	YK74 <sup>(2)</sup>
NaCl	54.6	117.9	3.195	6.896
Na <sub>2</sub> SO <sub>4</sub>	5.2	6.3	0.742	0.896
NaHCO <sub>3</sub>	7.2		0.602	
KCl	0.6		0.046	
CaCl <sub>2</sub>	0.5		0.058	
MgCl <sub>2</sub>	1.4		0.137	
Salinity			4.78	7.79
Total Na+	72.2	130.5		

8 (1): De Craen et al. (2006)

9 (2): van Marcke (2009)

10

1

2

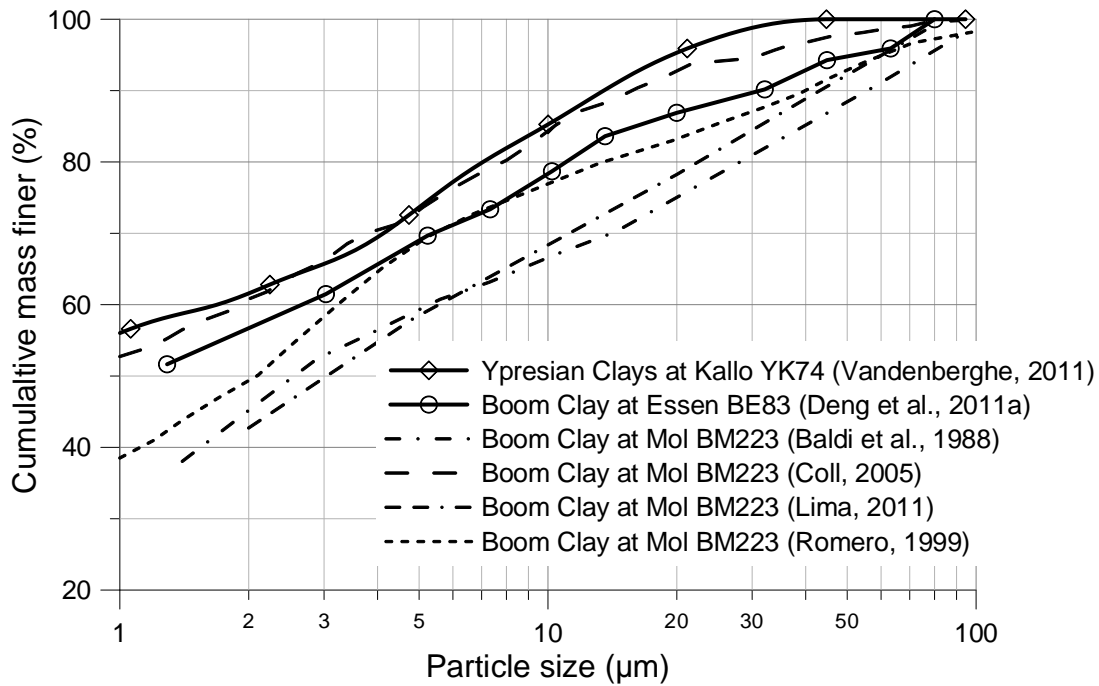
**Table 5: Test program**

Soils	Test ID	Solution soaked	Solution injected at 1 MPa	$e_0$ (-)	$S_{r0}$ (%)
Boom Clay	BO1 <sup>(1)</sup>	SBCW	H2O	0.730	-
	BO2 <sup>(1)</sup>	SBCW	SBCW	0.730	-
	BO3	SBCW	NaCl 15 g/L	0.720	99.09
	BO4	SBCW	NaCl 30 g/L	0.723	98.72
Ypresian Clays	YO1	SYCW <sup>(2)</sup>	NaCl 15 g/L	0.840	94.57
	YO2	SYCW	NaCl 30 g/L	0.839	95.27

3 (1): Deng et al. (2011a) and Nguyen (2013)

4 (2): Synthetic Ypresian Clay Water

5



6

**Figure 1: Particle-size distribution curves of Boom and Ypresian Clays**

7

8

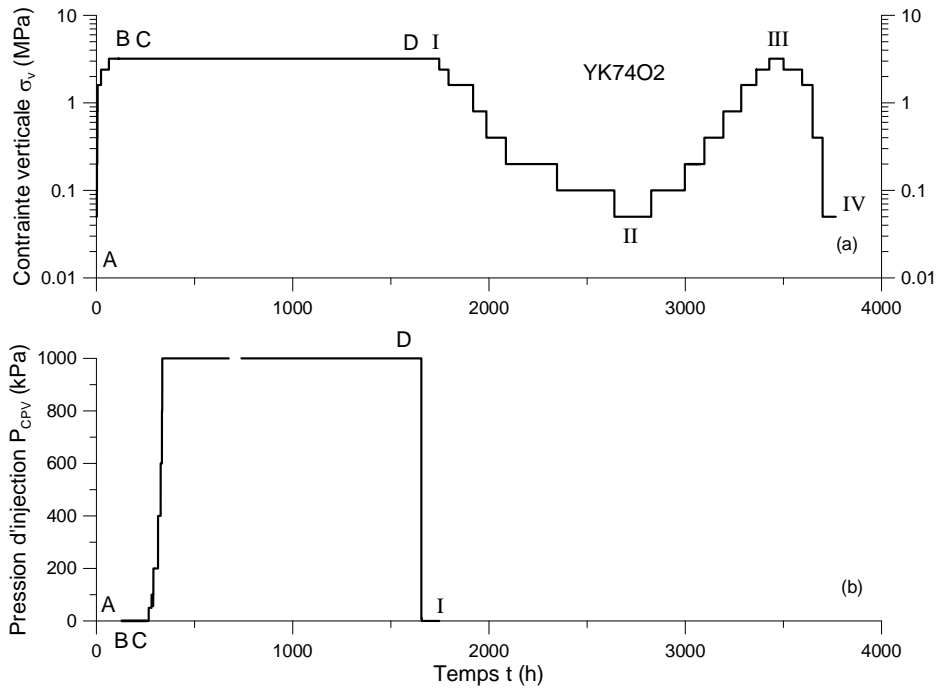


Figure 2: Typical loading procedure

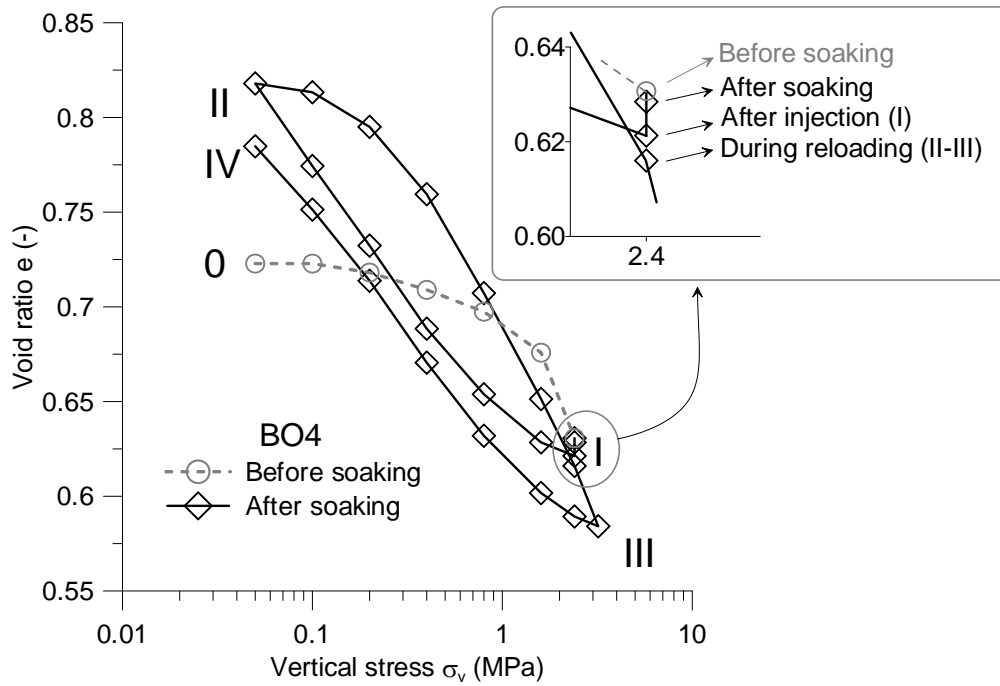
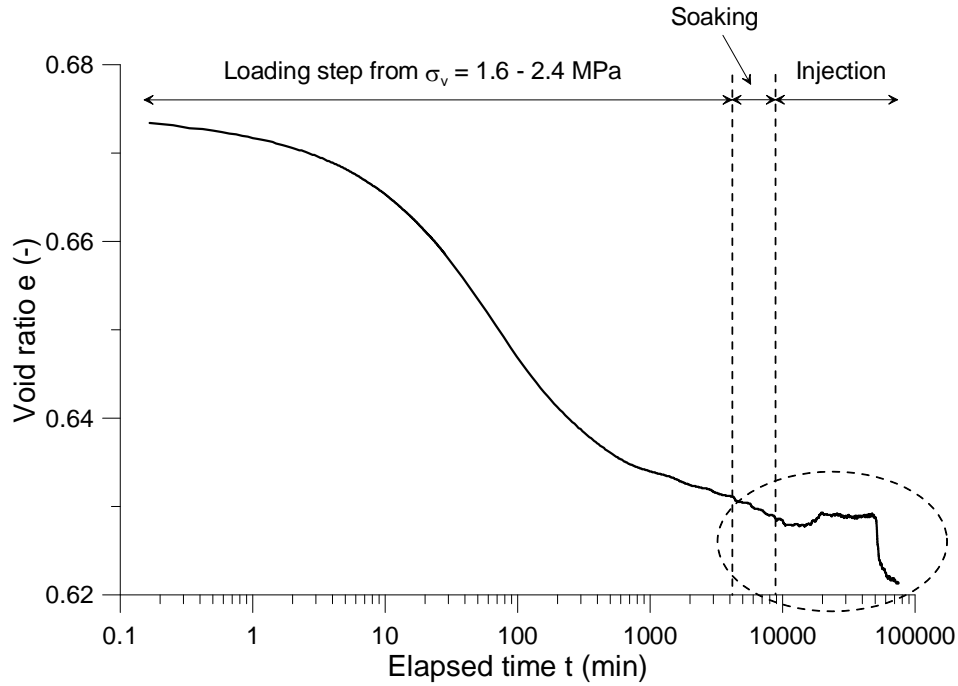


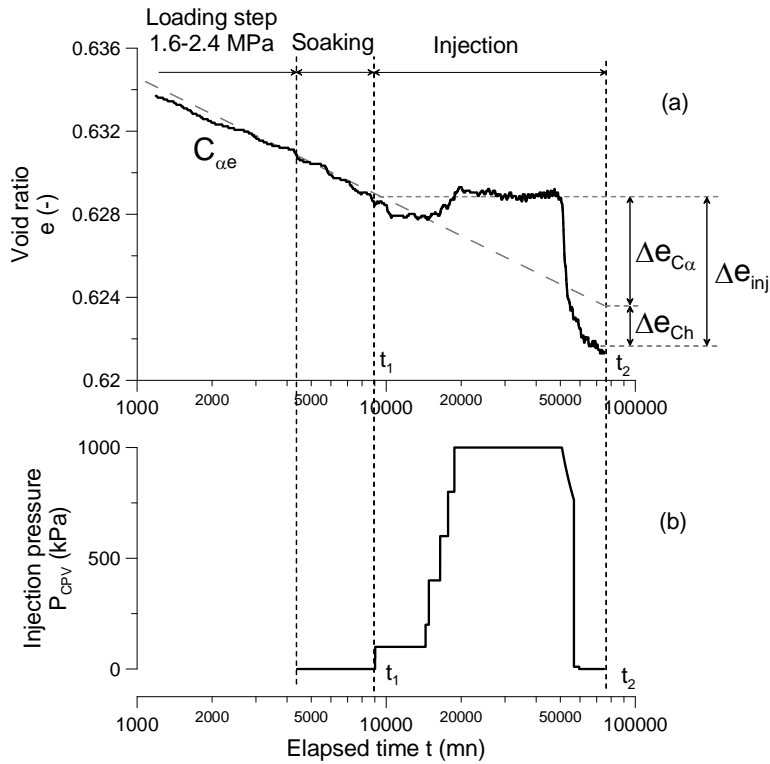
Figure 3: Compression curve of test BO4 (Boom Clay, NaCl solution at 30 g/L-concentration)





1

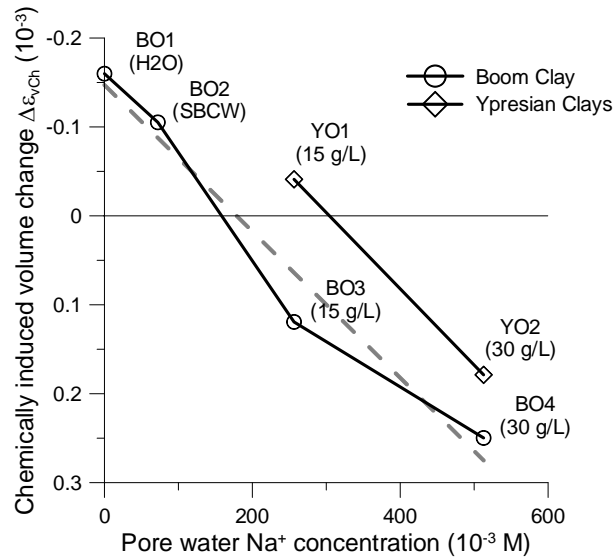
2 **Figure 4: Consolidation curve for the last loading step before soaking, soaking and injection of NaCl solution**  
 3 **at 30 g/L-concentration in test BO4 (Boom Clay)**



4

5 **Figure 5: Void ratio (a) and injection pressure (b) changes during the injection phase in test BO4 (Boom**  
 6 **Clay, NaCl solution at 30 g/L-concentration)**

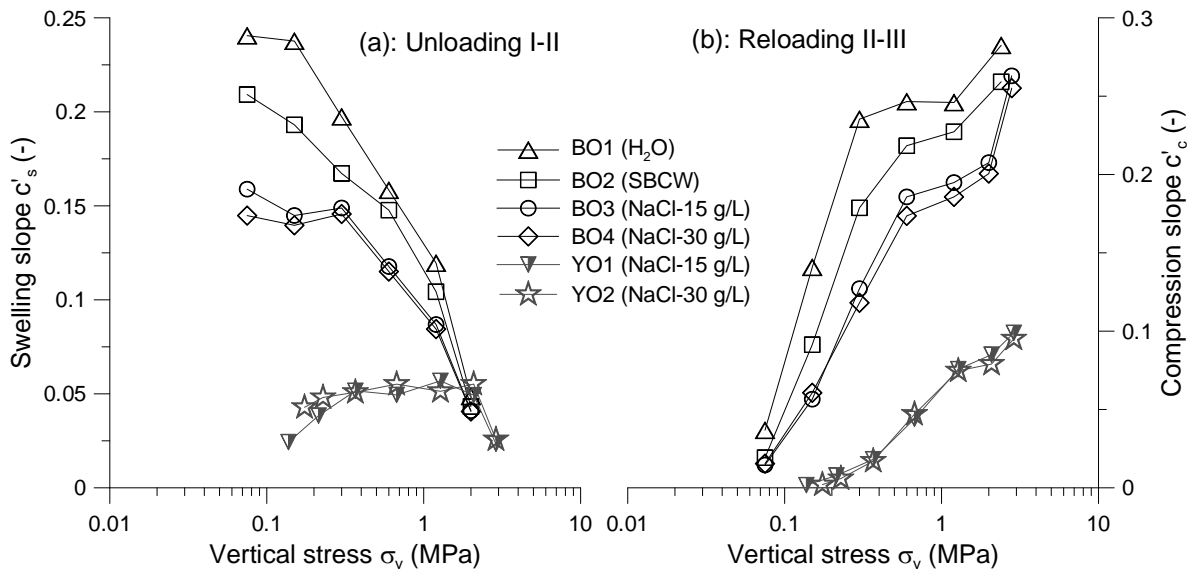
1



2

3 **Figure 6: Chemically induced volume change versus pore water Na<sup>+</sup> concentration during solution injection**

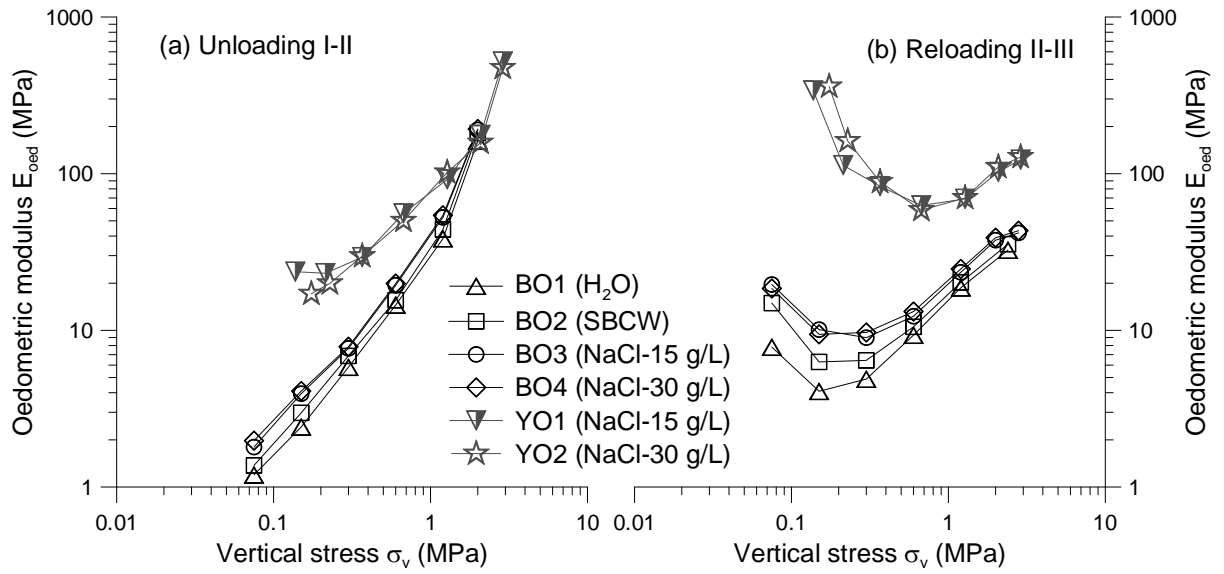
4



5

6 **Figure 7: Variations of swelling (a) and compression (b) slopes with vertical stress**

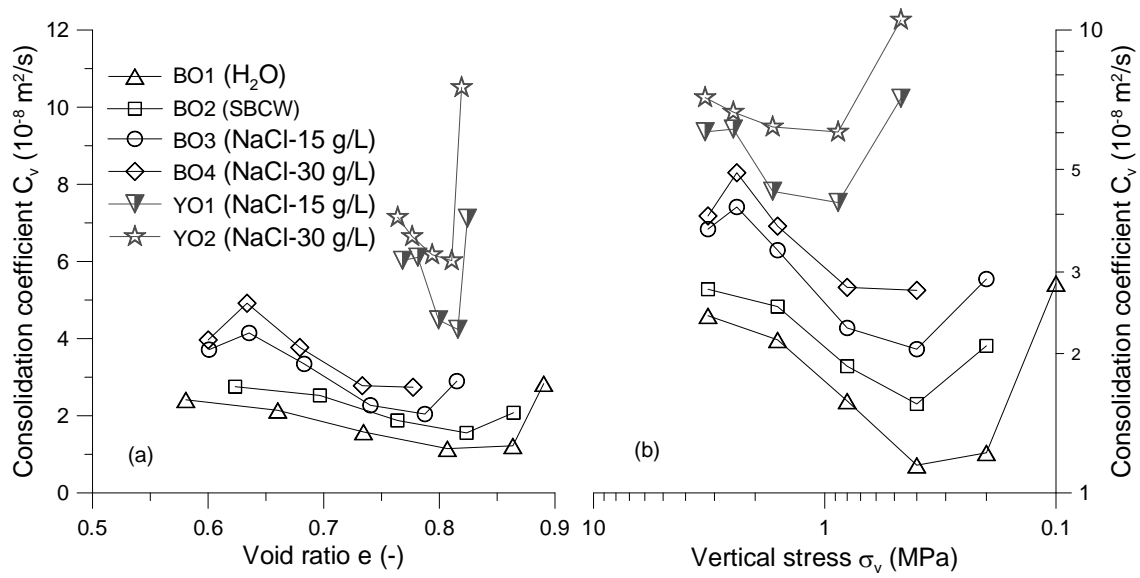
7



1

2  
3

**Figure 8: Variations of oedometric modulus with vertical stress during unloading I-II (a) and reloading II-III (b)**

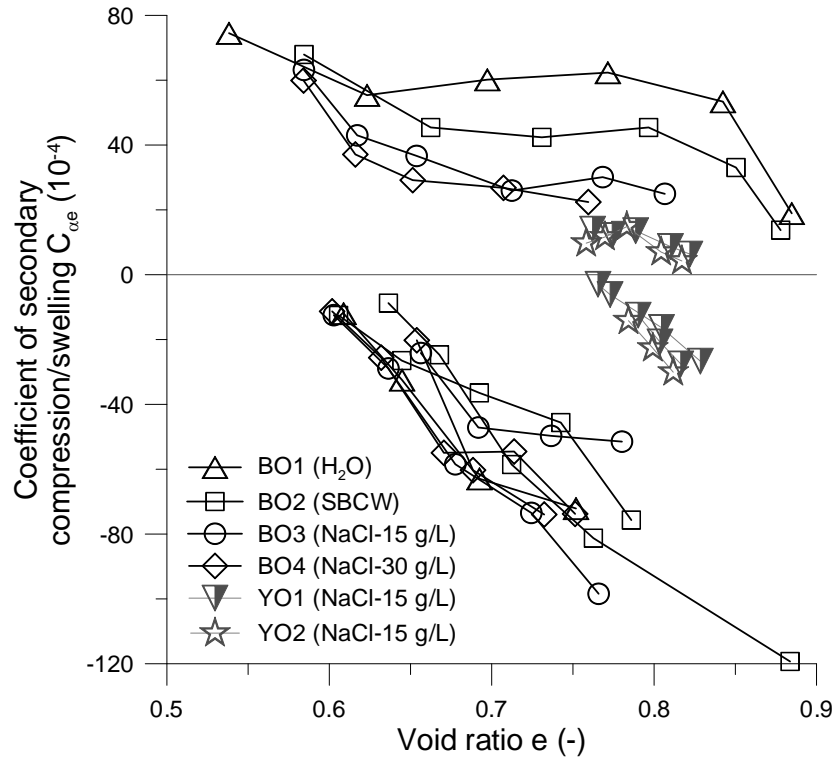


4

5

6

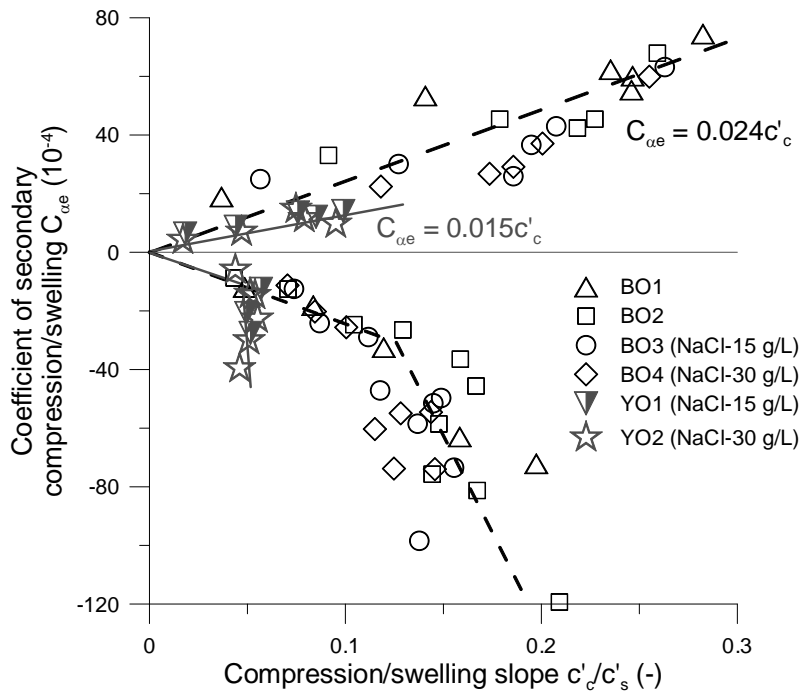
**Figure 9: Variations of consolidation coefficient with a) void ratio and b) vertical stress during reloading**



1

2  
3

Figure 10: Variations of secondary compression/swelling coefficient with void ratio for Boom Clay and Ypresian Clays

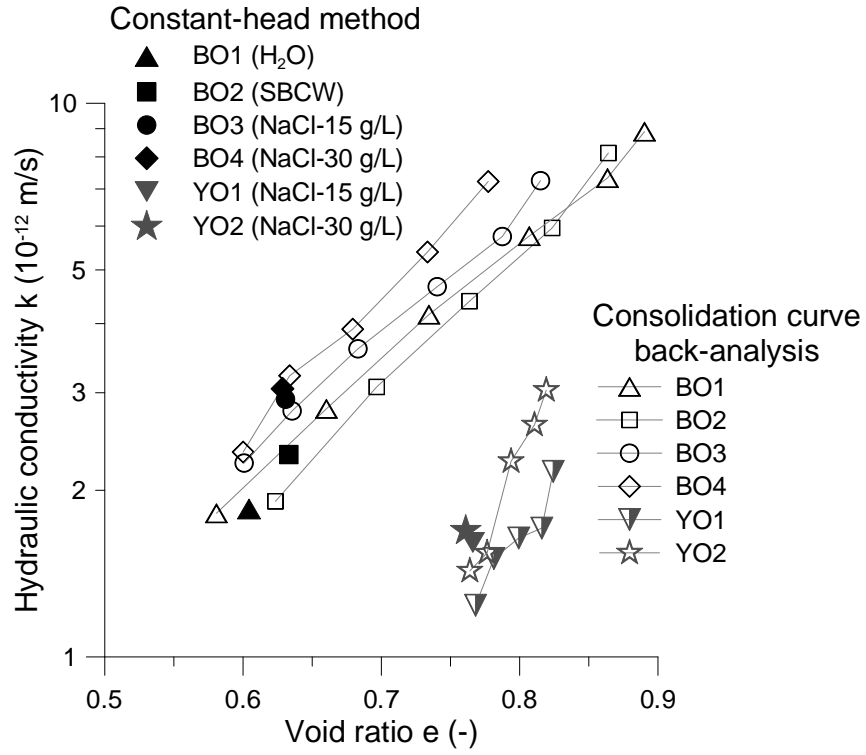


4

5

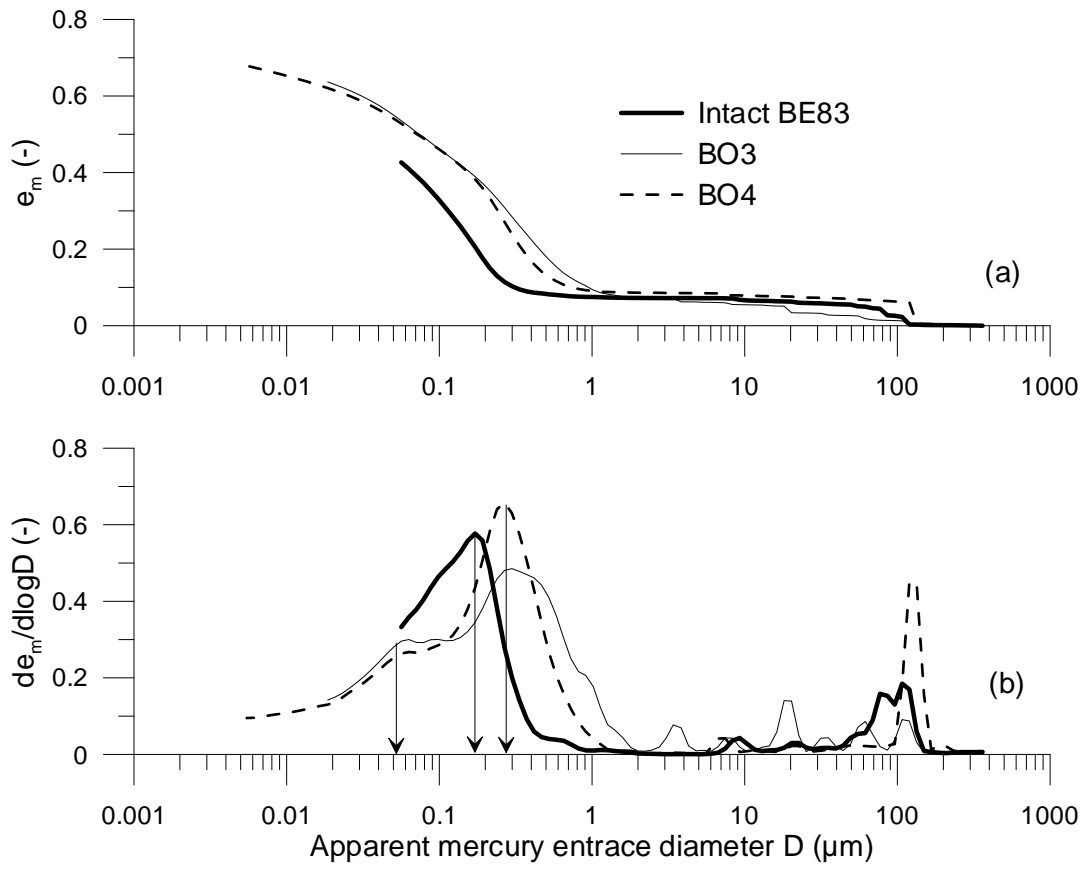
6

Figure 11: Correlations between  $C_{\alpha e}$  and  $c'_c$  or  $c'_s$  for Boom Clay and Ypresian Clays



**Figure 12: Variations of intrinsic permeability with void ratio**

1  
2  
3

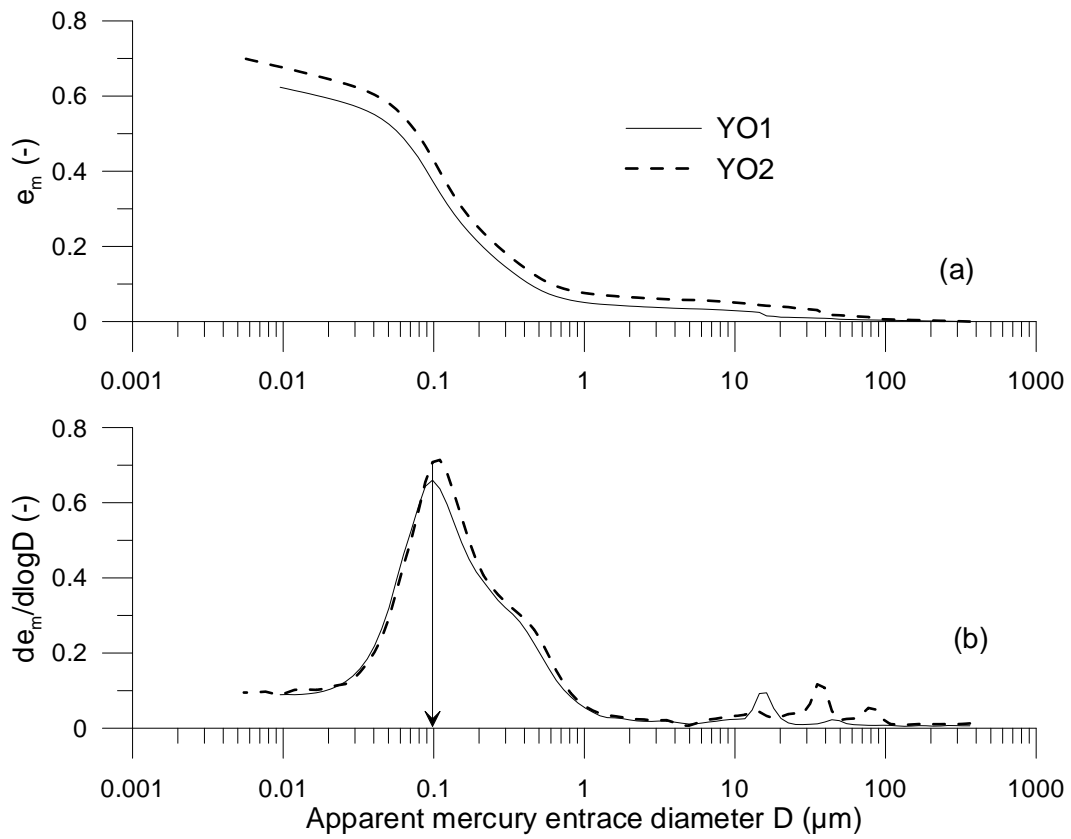


1

2

**Figure 13: Results of MIP tests on Boom Clay: (a) cumulative curves, (b) derived curves**

3

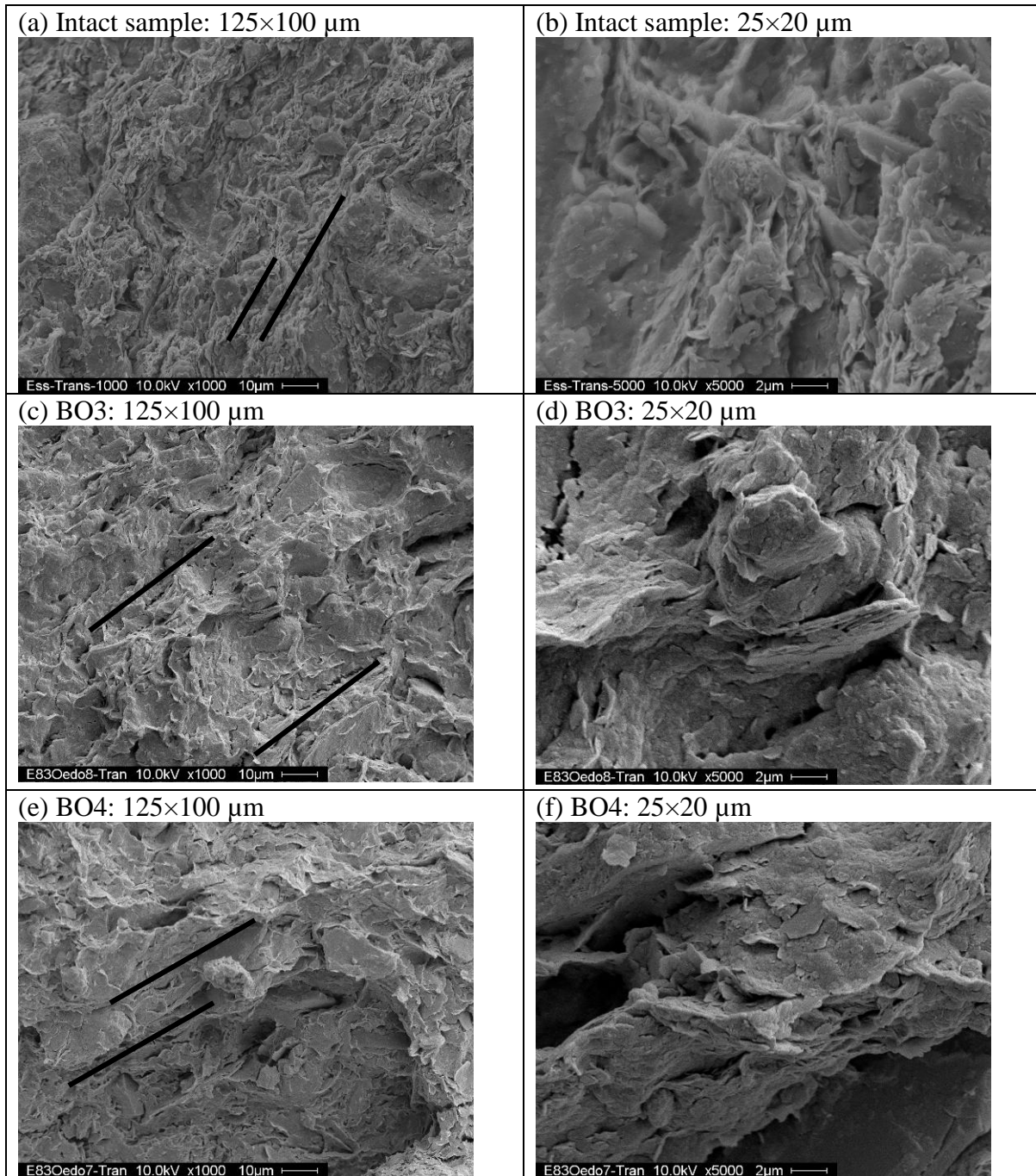


1

2

**Figure 14: Results of MIP tests on Ypresian Clays: (a) cumulative curves, (b) derived curves**

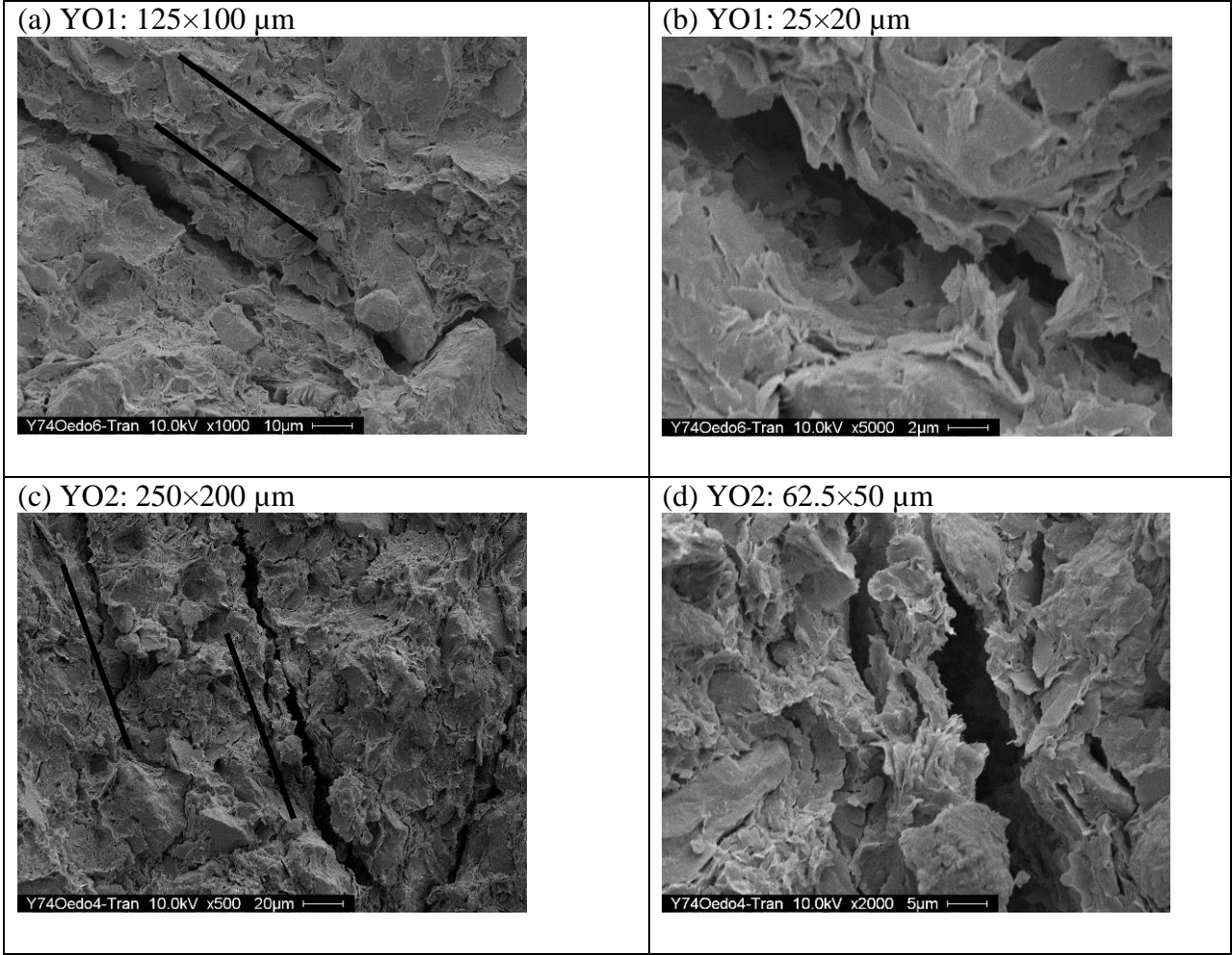
3



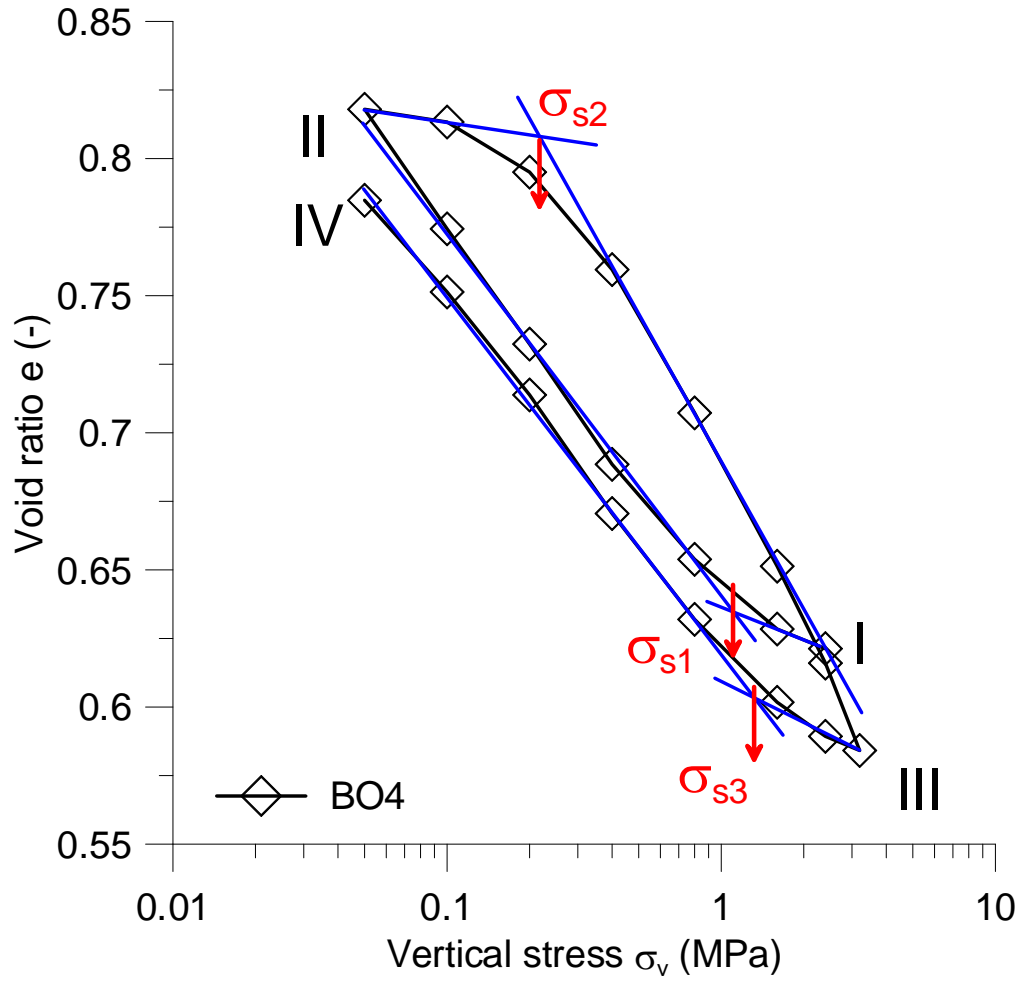
2  
3  
4

Figure 15: SEM photos of Boom Clay samples on the section perpendicular to bedding plane (marked by black lines)





1 **Figure 16: SEM images of Ypresian Clays samples on the section perpendicular to the bedding plane (marked**  
 2 **by black lines)**  
 3



1

2

Figure 17: Threshold stress  $\sigma_s$