



HAL
open science

SOCECO2. Économie et sociologie de la filière capture et stockage géologique du CO2

Minh Ha-Duong

► **To cite this version:**

Minh Ha-Duong. SOCECO2. Économie et sociologie de la filière capture et stockage géologique du CO2. Colloque ANR "Quelle recherche pour les énergies du futur?", Paris, France. 2009. hal-00835531

HAL Id: hal-00835531

<https://enpc.hal.science/hal-00835531>

Submitted on 18 Jun 2013

HAL is a multi-disciplinary open access archive for the deposit and dissemination of scientific research documents, whether they are published or not. The documents may come from teaching and research institutions in France or abroad, or from public or private research centers.

L'archive ouverte pluridisciplinaire **HAL**, est destinée au dépôt et à la diffusion de documents scientifiques de niveau recherche, publiés ou non, émanant des établissements d'enseignement et de recherche français ou étrangers, des laboratoires publics ou privés.

Simulated CO₂ pipeline networks for CCS in France

Calas G.^a, Bielicki J. M.^b, Ha-Duong M.^a, and Middleton R. S.^c

^a Centre International de Recherche sur l'Environnement et le Développement (CIRED–CNRS), 45 bis avenue de la belle Gabrielle, 94736 Nogent sur Marne CEDEX, France

^b Humphrey School of Public Affairs, University of Minnesota, 130 Humphrey Center, 301 19th Ave. S, Minneapolis, MN 5545, USA

^c Earth & Environmental Sciences Division, Los Alamos National Laboratory, P.O. Box 1663, Los Alamos, NM 87545, USA

Abstract

Introduction

Carbon capture and storage (CCS) may be a key option against climate change, but it will cost billions of euros just to build the pipeline infrastructure required to transport CO₂ from sources to reservoirs. As a wave of large-scale demonstration projects is being prepared in OECD countries, early planning of how the CO₂ pipeline network may be designed in the long term will help to control the total social costs.

We apply *SimCCS*, a CO₂ system model developed by Middleton and Bielicki (2009), to a developed country with little extant CO₂ pipeline infrastructure: France. We ask two main questions:

1. Considering a couple of plausible scenarios for the future of the technology in the country, do we find any pipeline corridors common to all solutions?
2. How does a network designed for 10 Mt per year compare with a network for higher storage goals?

Scenarios studied

Storage goals from 10 Mt to 60 Mt were examined. We modelled the forty largest CO₂ sources in France, for a total of 80 MtCO₂ per year. Two storage scenarios are considered:

- An *onshore scenario*, where storage is permitted only in the Paris basin aquifers;
- An *offshore scenario* exports CO₂ towards the North sea through Normandy and toward an hypothetical storage option reachable off the Mediterranean shore.

Evolution of common network corridors in the simulations

Figure 1 compares the two scenarios for a common 30 MtCO₂/yr target, while **Figure 2** compares several targets (10, 40, 50 and 60 MtCO₂/yr) for the “onshore scenario”. Three segments of network are always apparent: one is in the East (Lorraine region), another is in the North (Nord–Pas de Calais region). Also, scenarios with targets over 20 MtCO₂/yr use a corridor along the Seine river between Paris and Le Havre.

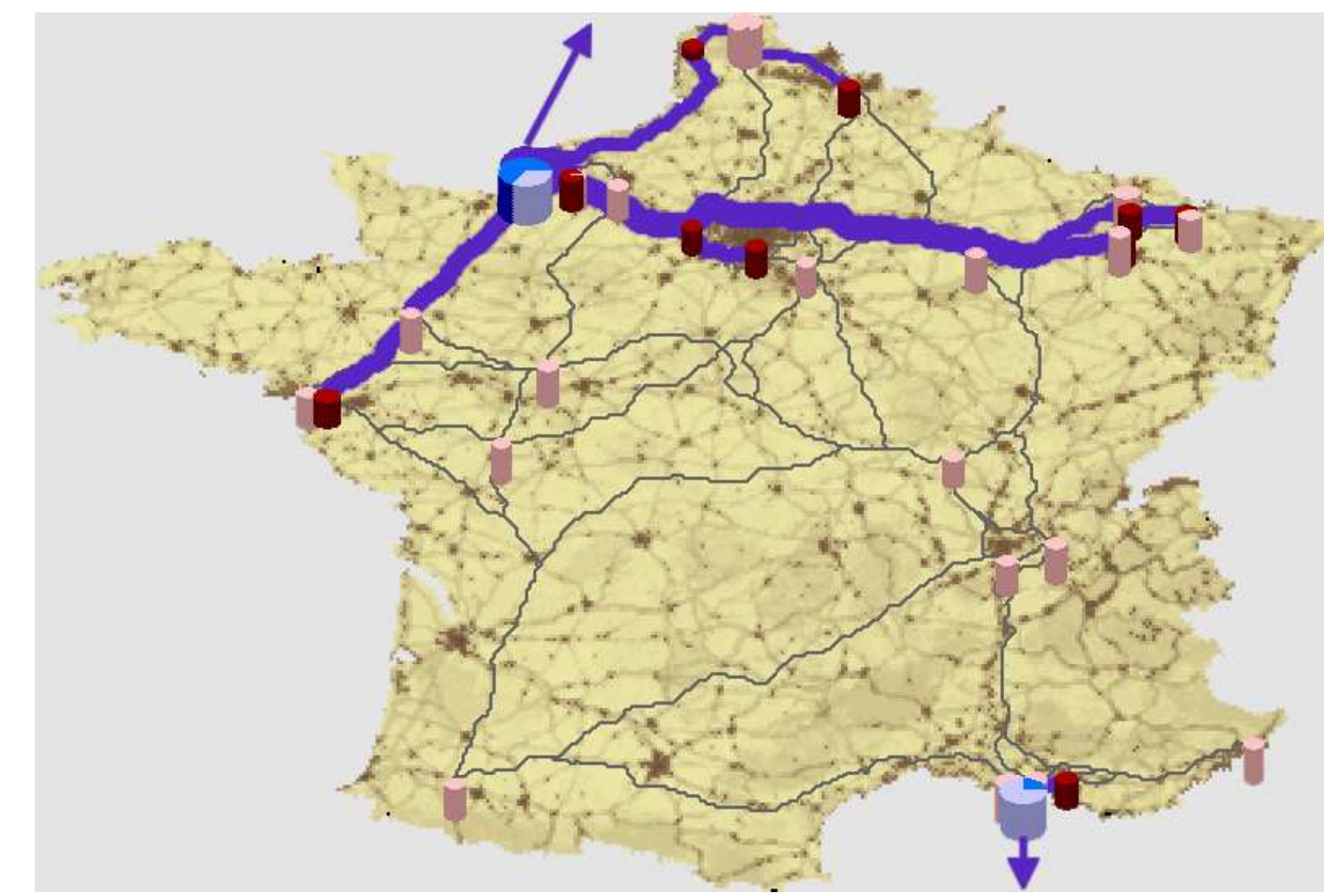
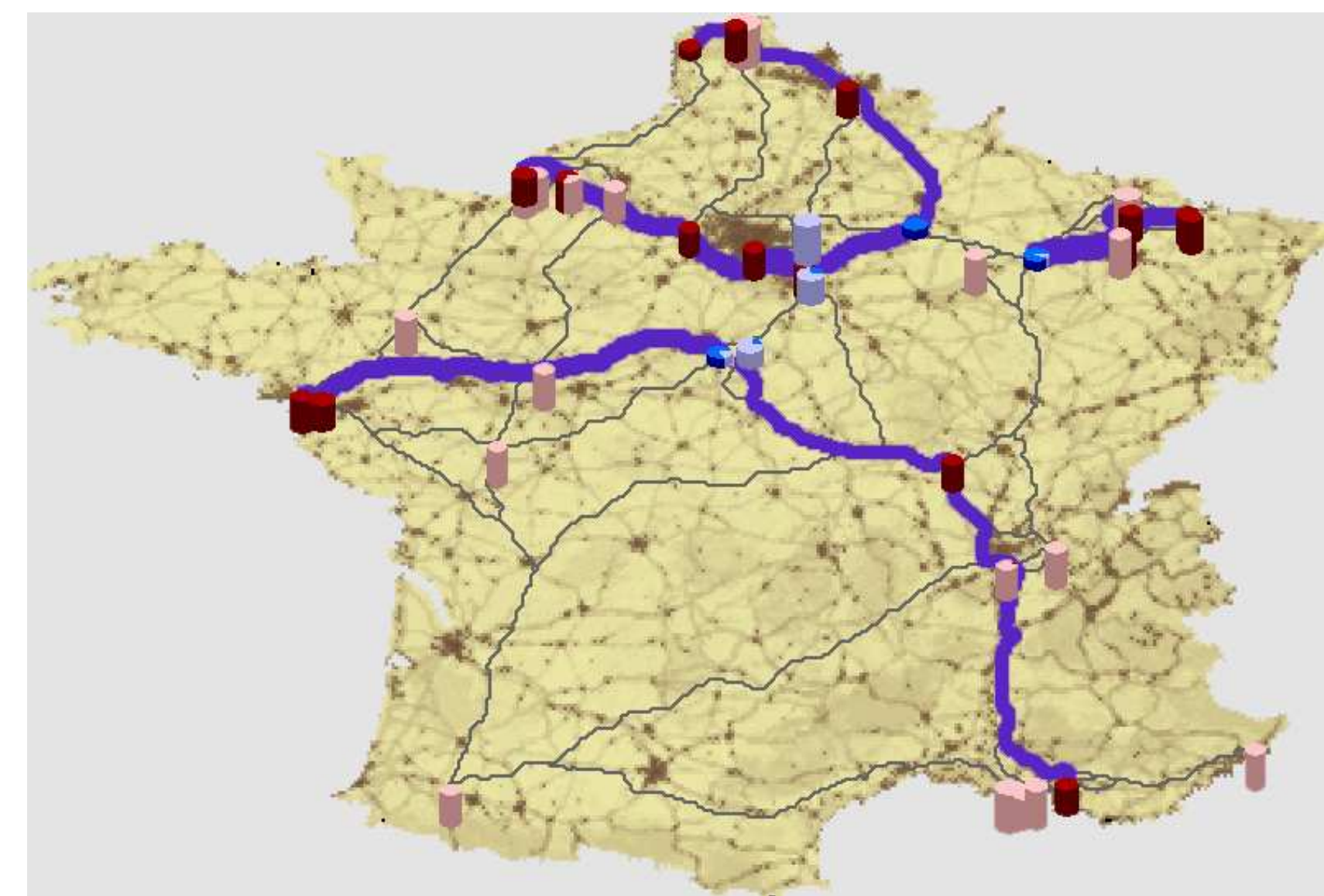
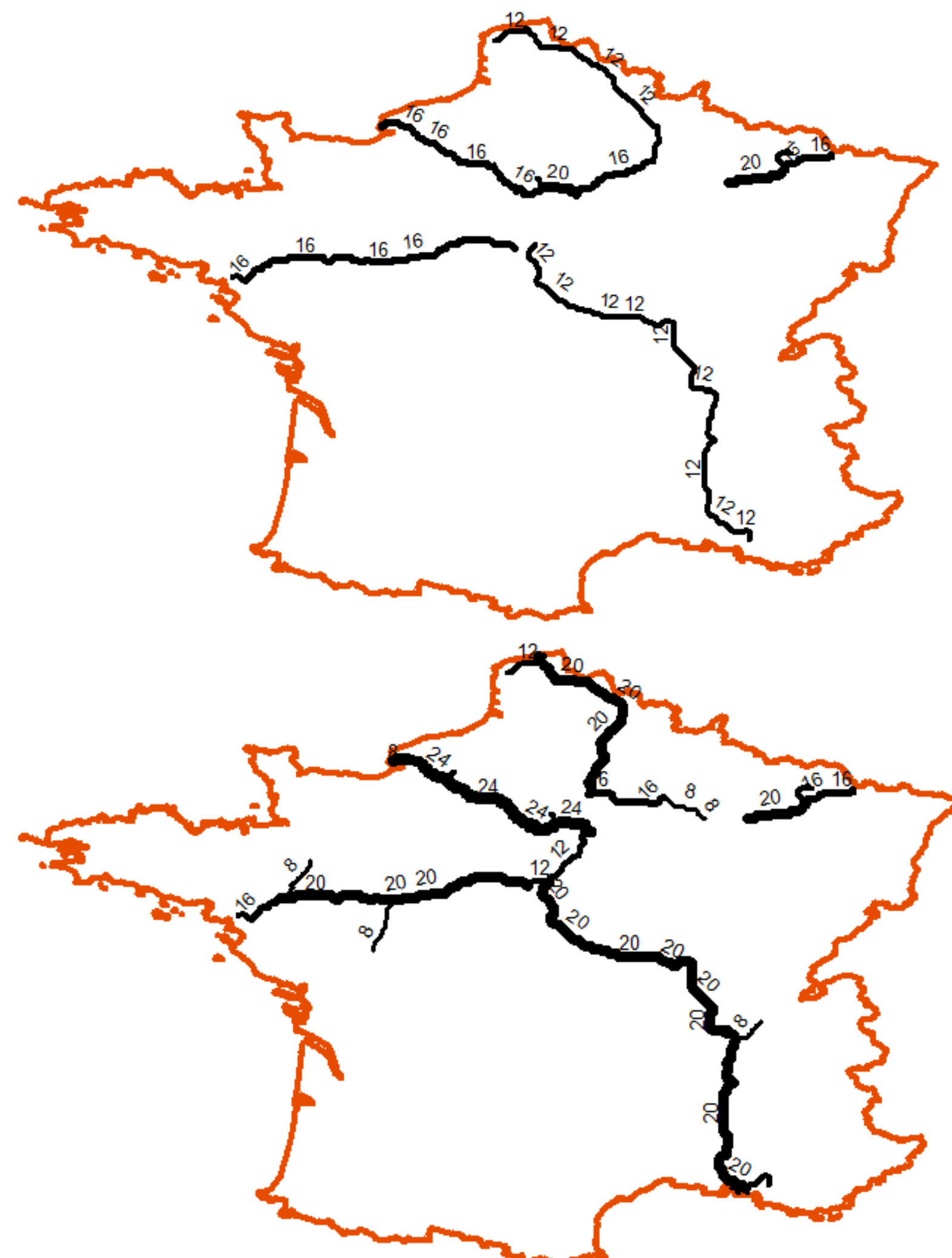
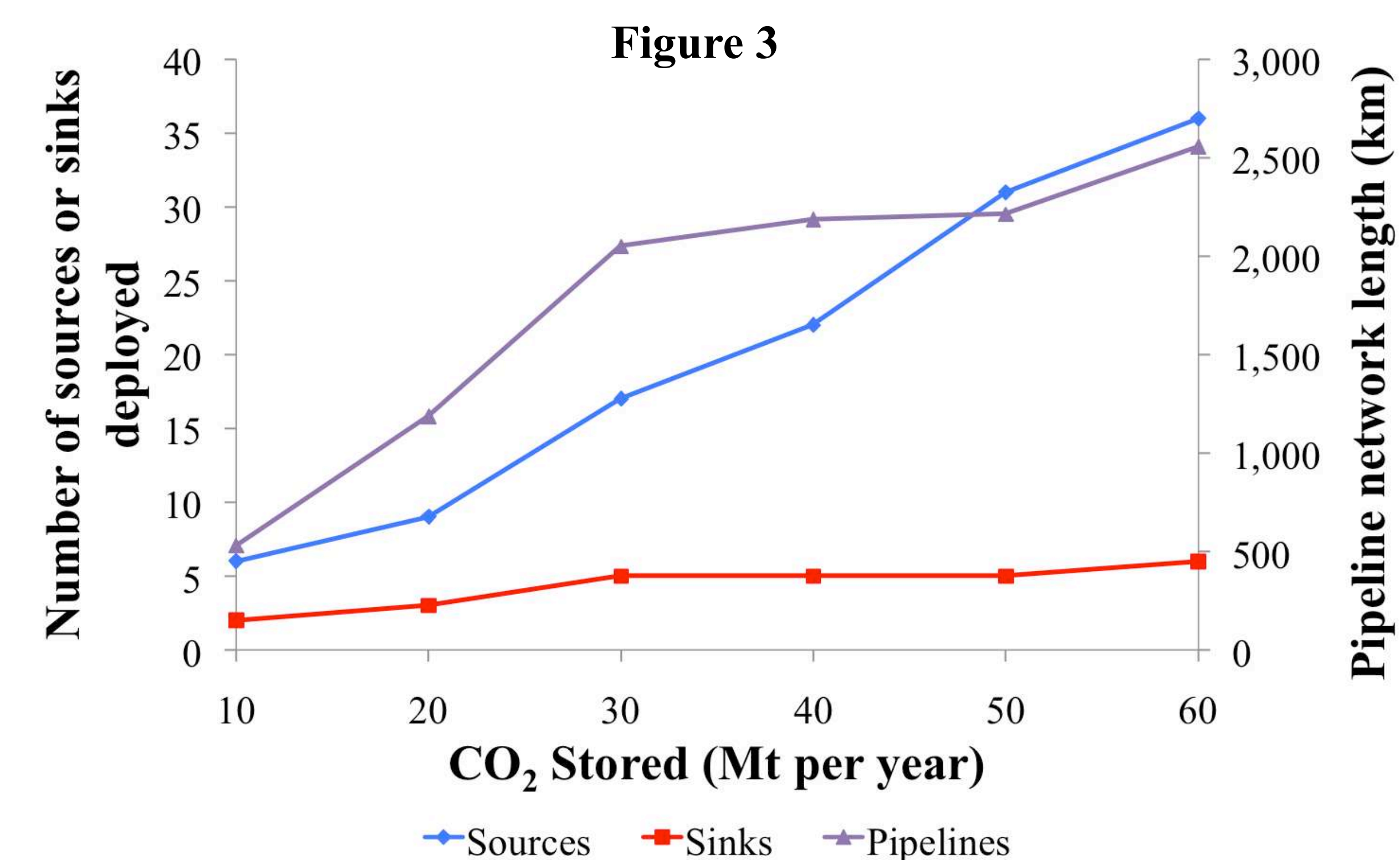


Figure 1. Optimal CCS network for 30 MtCO₂/yr in France for the “onshore scenario” (left) and the “offshore scenario” (right). Captured sources are in red, non-captured sources in pink, sinks in blue, unused sinks in light blue. The network is in purple. Arrows symbolise pipelines linking a hub to the offshore reservoir.

Figure 2. CCS pipeline for the “onshore scenario” for two different CO₂ targets: 30 MtCO₂/yr (up) and 60 MtCO₂/yr (down). The figures correspond to pipeline diameters (in inches).



We ran simulations with the target quantity increasing from 10 MtCO₂/yr to 60 MtCO₂/yr in steps of 10 MtCO₂/yr. Initially, the network extends in size, reaching for the cheaper sources. Between 30 MtCO₂/yr to 50 MtCO₂/yr, the network extends in capacity, subnetworks merge, CO₂ flows are aggregated into 20–24 inches trunklines. Finally the 60 MtCO₂/yr network, compared to the 50 MtCO₂/yr, is again longer in length due to several ramifications (**Figure 2** and **3**). The model builds about 2 500 km of pipelines for the 60 MtCO₂/yr target. If this number is to be reached in 30 years, that is about 83 km of pipeline per year to open.



SimCCS model

A cost surface, i.e. a raster grid of the cost to lay a pipeline across each grid cell, was estimated using geographical datasets including protected areas, existing gas pipelines, rivers, railroads, highways, land cover, and population densities. Given the location of sources and reservoirs as network nodes, the model generated a set of potential routes between all possible close node pairs (**Figure 4**). Based on these potential routes, given the costs of capture, building and operating pipeline, storing and exporting CO₂, the model minimized the total cost to meet a given target quantity of CO₂ stored.

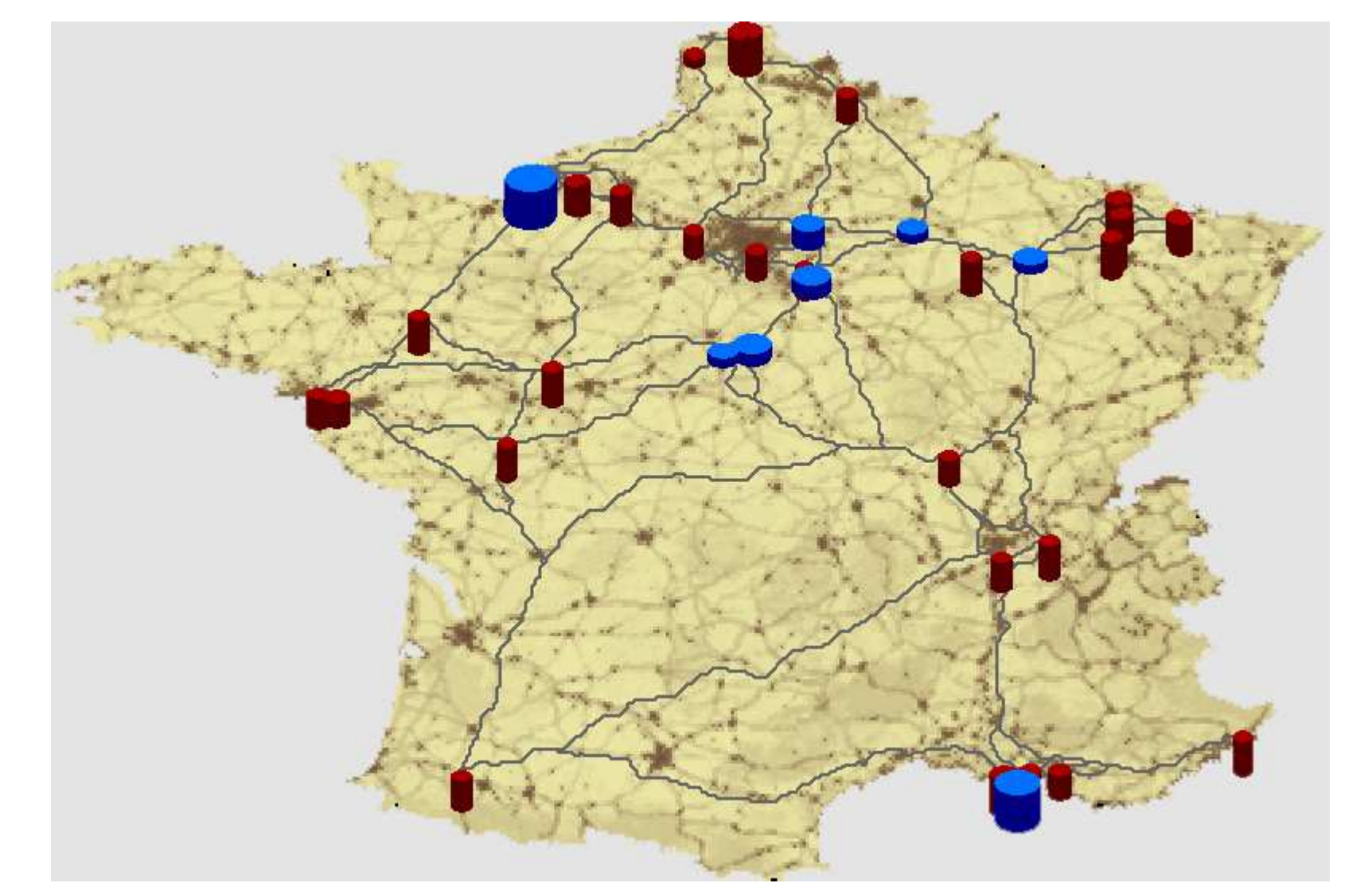


Figure 4. Potential pipeline routes (grey) between CO₂ emitters (red) and CO₂ sinks (blue).

Conclusions

System-wide optimization appears mostly to use the sources in the order of increasing capture cost, and connect those to the available sinks. Average system cost is about 52 \$/tCO₂ in the “onshore scenario”. Capture costs represent 70% to 90% of this.

This study displays that some pipeline corridors are to be constructed if CCS is deployed in France. Moreover small-scale network designs are compatible with large-scale ones, but not the capacities (i.e. pipeline diameters). Since pipeline network development should be motivated by returns to scale at long-term, it may be relevant to push for the early construction of such oversized corridors, for instance by public–private partnerships.

Literature cited

Middleton, R.S., and J.M. Bielicki (2009). A scalable infrastructure model for carbon capture and storage: *SimCCS*. *Energy Policy* 37(3), 1052-1060.