



HAL
open science

Continuous monitoring and modelling of cyanobacteria dynamics in urban lakes

Talita Silva, Brigitte Vinçon-Leite, Bruno J. Lemaire, Bruno Tassin, Martin Seidl, Nilo Nascimento

► **To cite this version:**

Talita Silva, Brigitte Vinçon-Leite, Bruno J. Lemaire, Bruno Tassin, Martin Seidl, et al.. Continuous monitoring and modelling of cyanobacteria dynamics in urban lakes. 2nd IWA Symposium on Lake and Reservoir Management, Jun 2011, Grenade, Spain. hal-00674661

HAL Id: hal-00674661

<https://enpc.hal.science/hal-00674661v1>

Submitted on 28 Feb 2012

HAL is a multi-disciplinary open access archive for the deposit and dissemination of scientific research documents, whether they are published or not. The documents may come from teaching and research institutions in France or abroad, or from public or private research centers.

L'archive ouverte pluridisciplinaire **HAL**, est destinée au dépôt et à la diffusion de documents scientifiques de niveau recherche, publiés ou non, émanant des établissements d'enseignement et de recherche français ou étrangers, des laboratoires publics ou privés.



Continuous monitoring and modelling of cyanobacteria dynamics in urban lakes

Application to Lake Enghien, France and Lake Pampulha, Brazil

Talita Silva, Brigitte Vinçon-Leite, Bruno Lemaire, Bruno Tassin, Martin Seidl, Nilo Nascimento



OUTLINE

- Cyanobacteria monitoring
- Proliphyc project
 - Measurement buoy
- Lake Enghien
 - Monitoring
 - Modelling
- Lake Pampulha
 - Monitoring methodology
 - Integrated modelling approach
 - Expected results
- Conclusions

LIMITS OF THE USUAL MONITORING

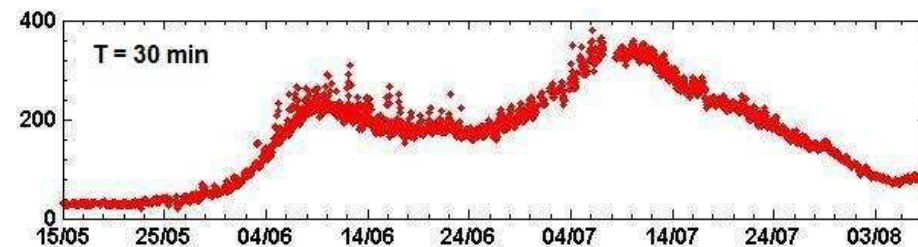
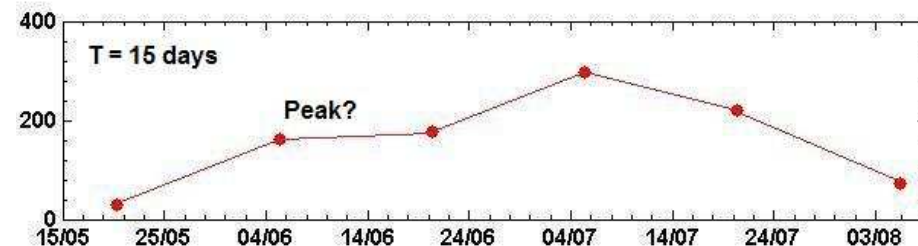
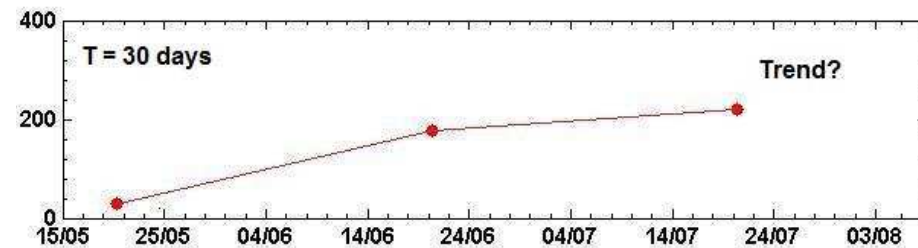
- Cyanobacteria monitoring
 - How it is usually done



- How we propose to do it



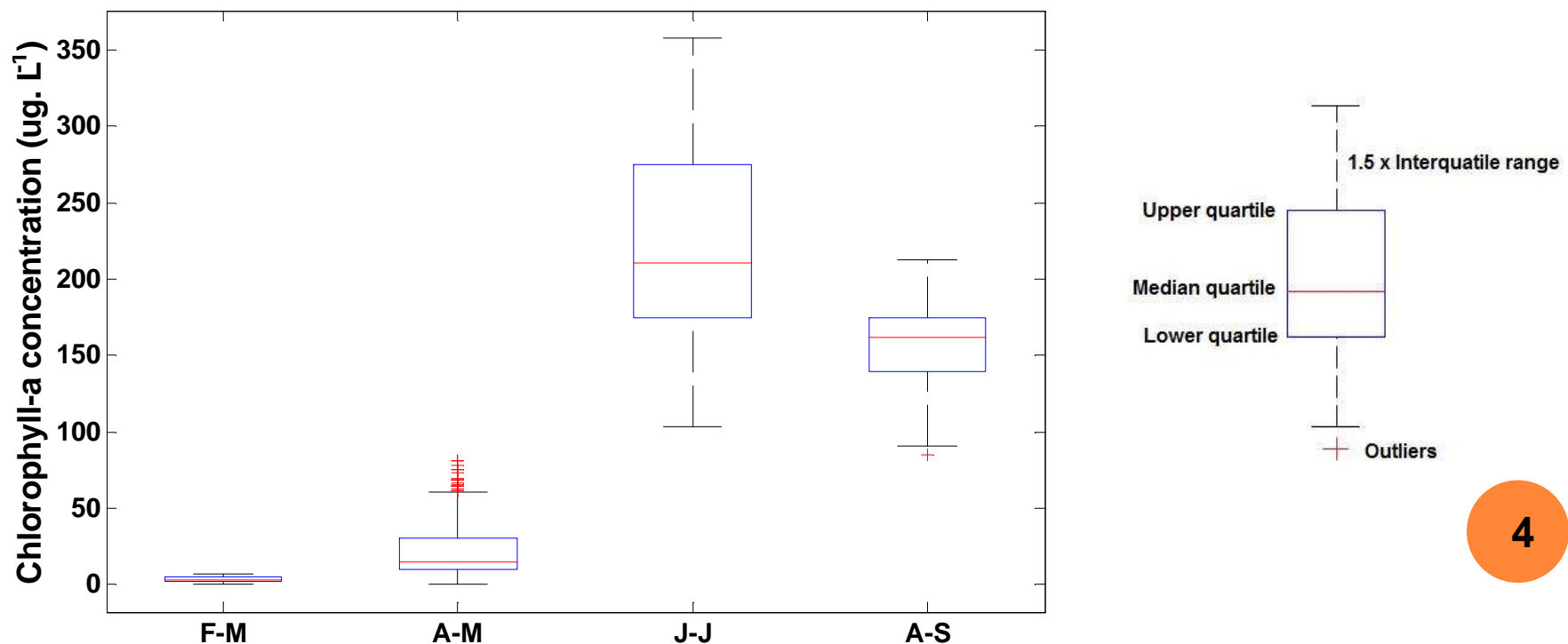
Cyanobacteria – Chlorophyll-a concentration ($\mu\text{g. L}^{-1}$)



BENEFITS OF HIGH-FREQUENCY MONITORING

French protocol (European WFD)

- 4 sampling campaigns/year
 - Including 3 during the summer
- 3 weeks = minimum interval between the campaigns

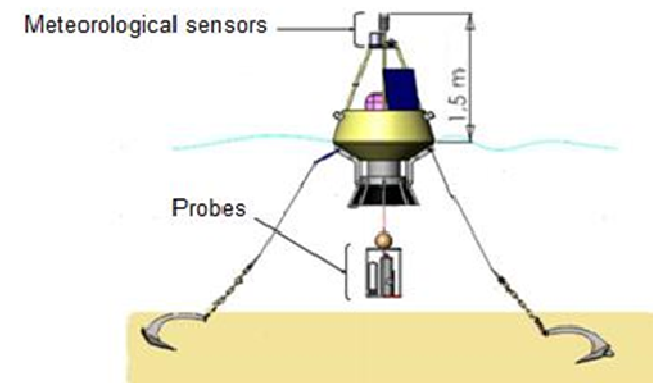
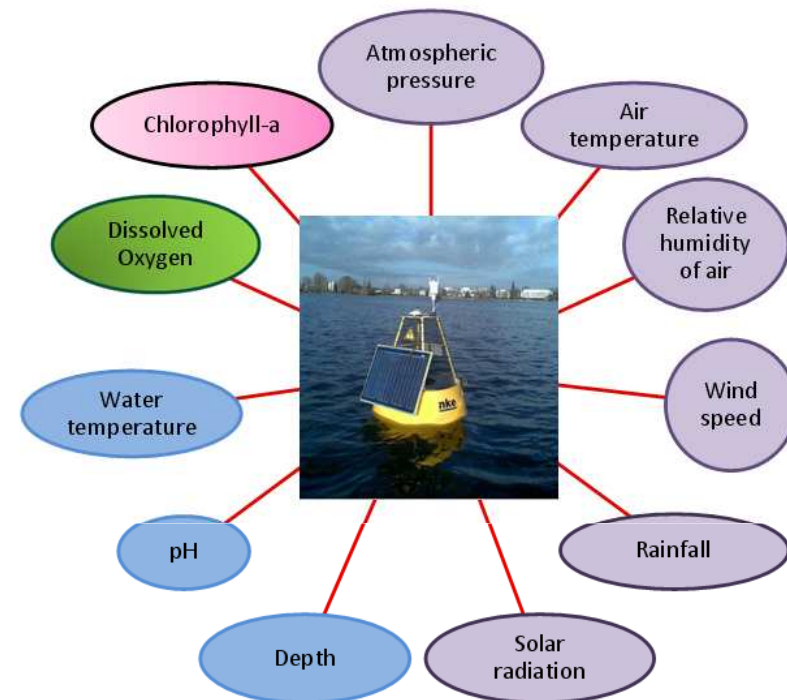




PROLIPHYC PROJECT

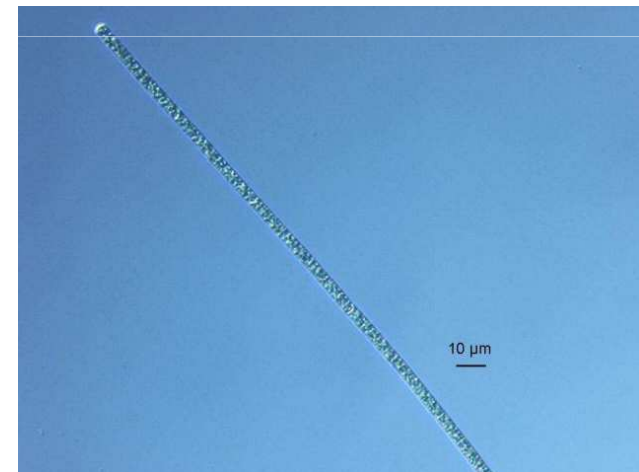
- A measuring buoy
 - High-frequency data (15-30 min)
 - Data teletransmission (daily)

- Warning system
 - Based on the weather forecast and buoy measurements
 - Short-term predictive modelling (1 week)



LAKE ENGHIEEN-LES-BAINS

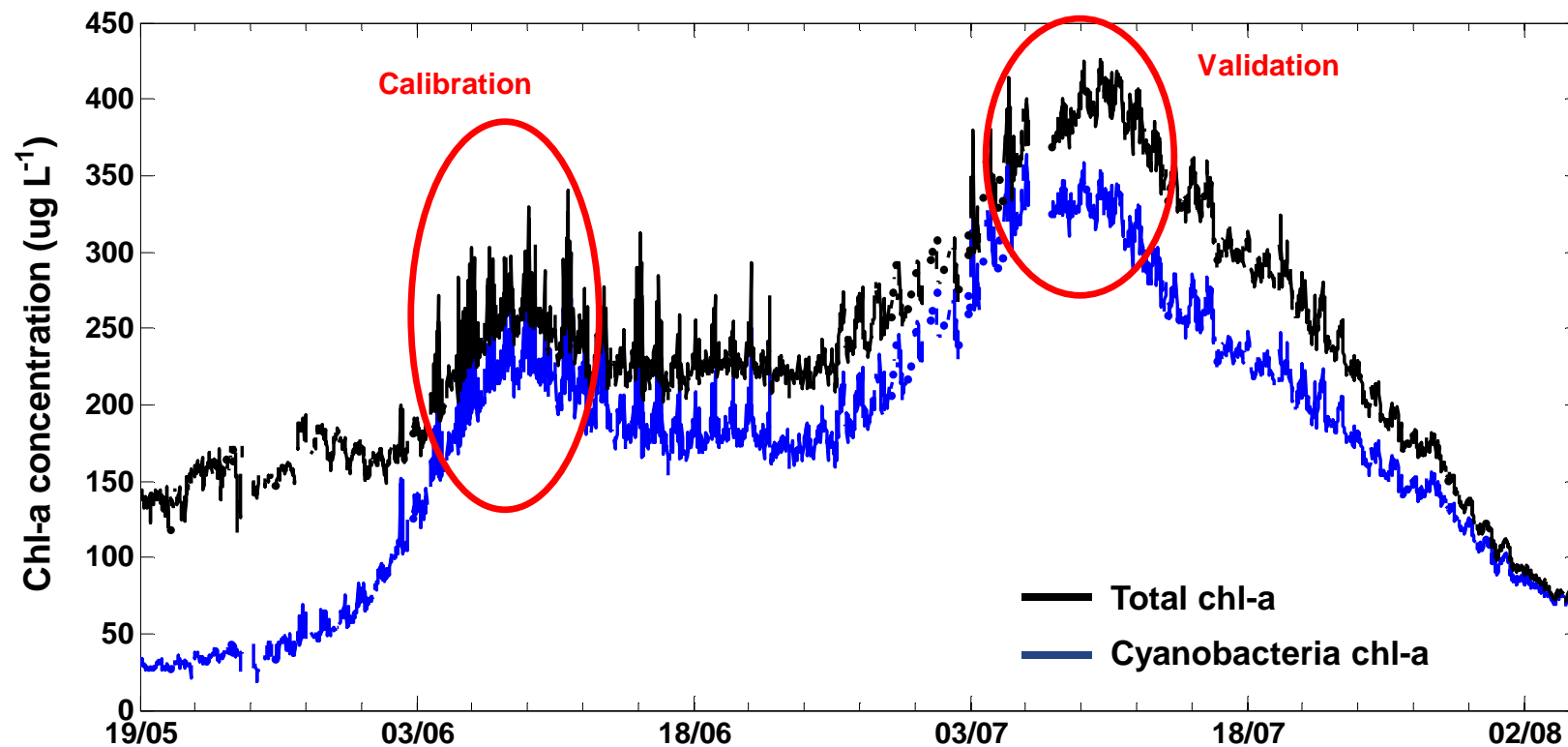
- 41 ha, mean depth = 1.5 m
- Rainwater storing, sport, landscape
- Inappropriate wastewater discharges
- *Planktothrix agardhii* blooms



(Escoffier 2008)

MODELLING

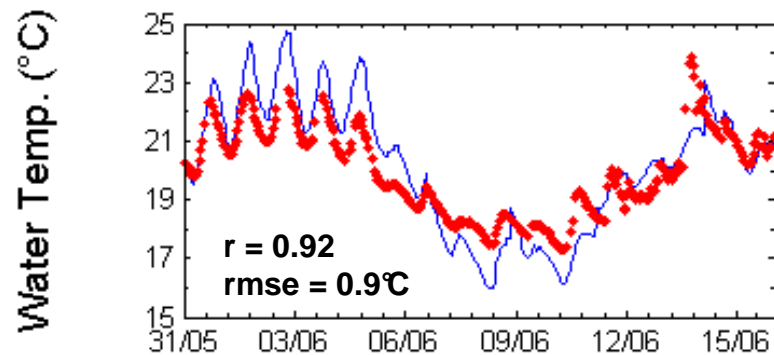
- DYRESM-CAEDYM model (Centre for Water Research, University of Western Australia)
- 1 phytoplankton group: cyanobacterium *Planktothrix agardhii*
- Model calibration and validation



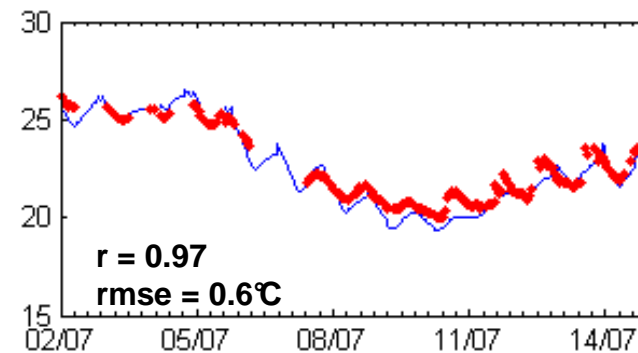
DYCD RESULTS

- Model results show good agreement with measurements
- High frequency data → thorough assesment of results
 - Gal *et al.* (2009); Burger *et al.* (2008); Hornung (2002)
 - Medium-term simulations, hourly time step

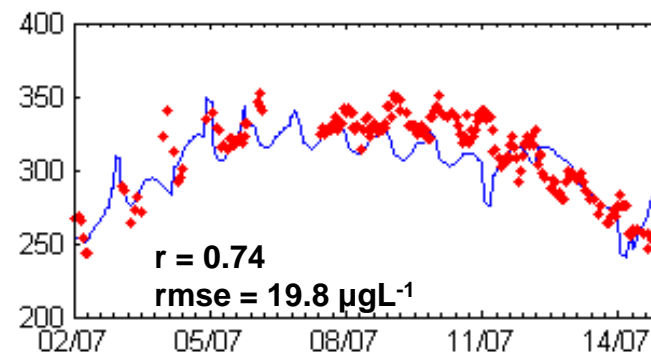
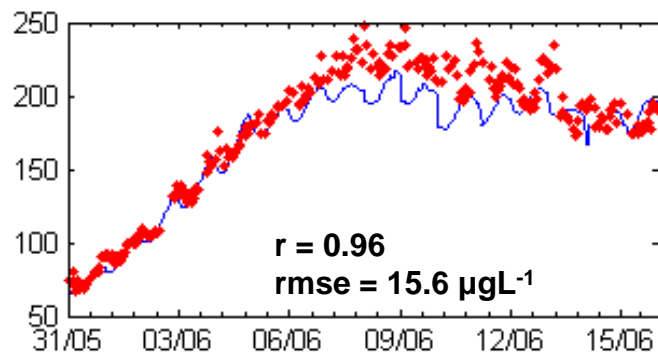
Calibration period 1-16 June 2009



Validation period 2-16 July 2009



Cyanobacteria
chl-a ($\mu\text{g L}^{-1}$)



Depth : 0.75 m

LAKE PAMPULHA

- Belo Horizonte, Minas Gerais, Brazil
- 197 ha, 10 hm³, 5,0 m (mean depth)
- Former drinking water source

Urbanization + no sanitation
infrastructure + no erosion control

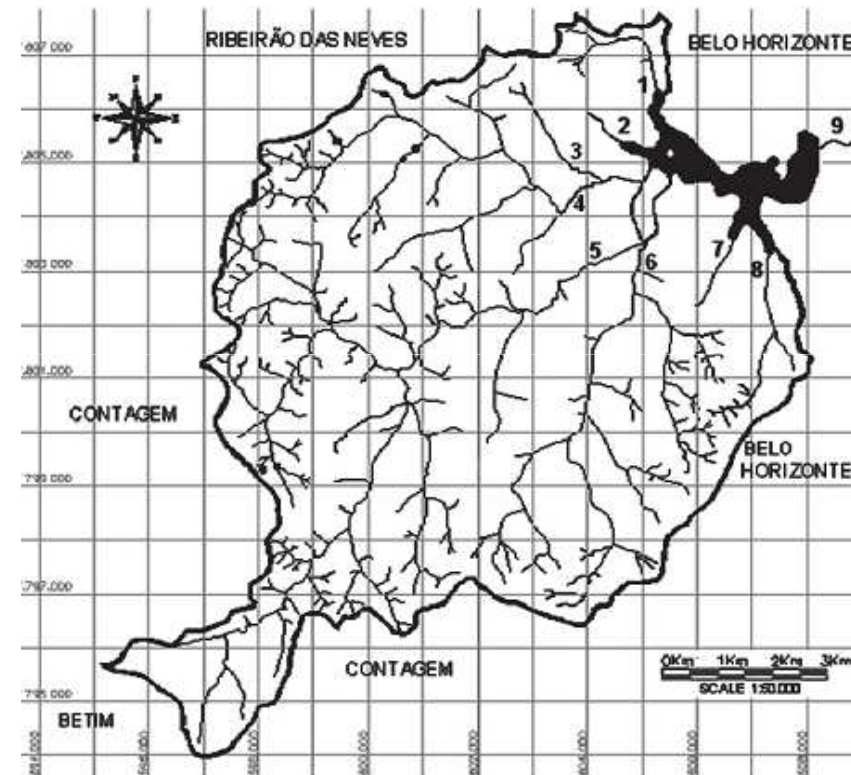
lake silting and storage capacity
reduction

- Cyanobacteria blooms and
macrophyte growth
- Touristic spot
 - Fishing, sailing, landscape



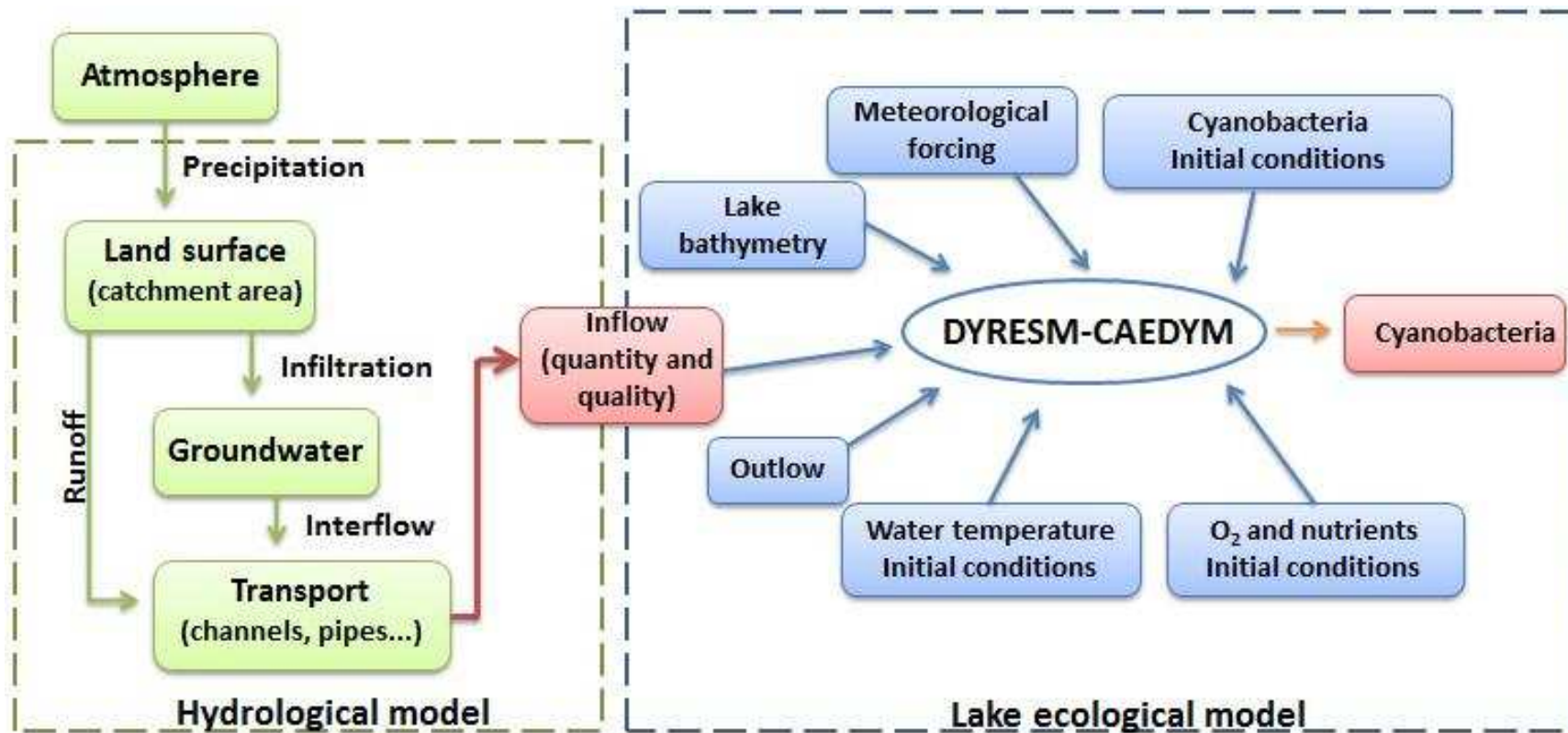
WATERSHED AND LAKE MONITORING

- High frequency data*
 - Two main tributaries and lake outlet :
 - Rain gauges
 - Flow rate
 - Temperature, conductivity and turbidity
 - Automatic samplers: nutrients and dissolved oxygen
 - Measurement buoy :
 - Temperature, conductivity, pH, O₂ and chl-a
 - Meteorological forcing : INMET



INTEGRATED APPROACH

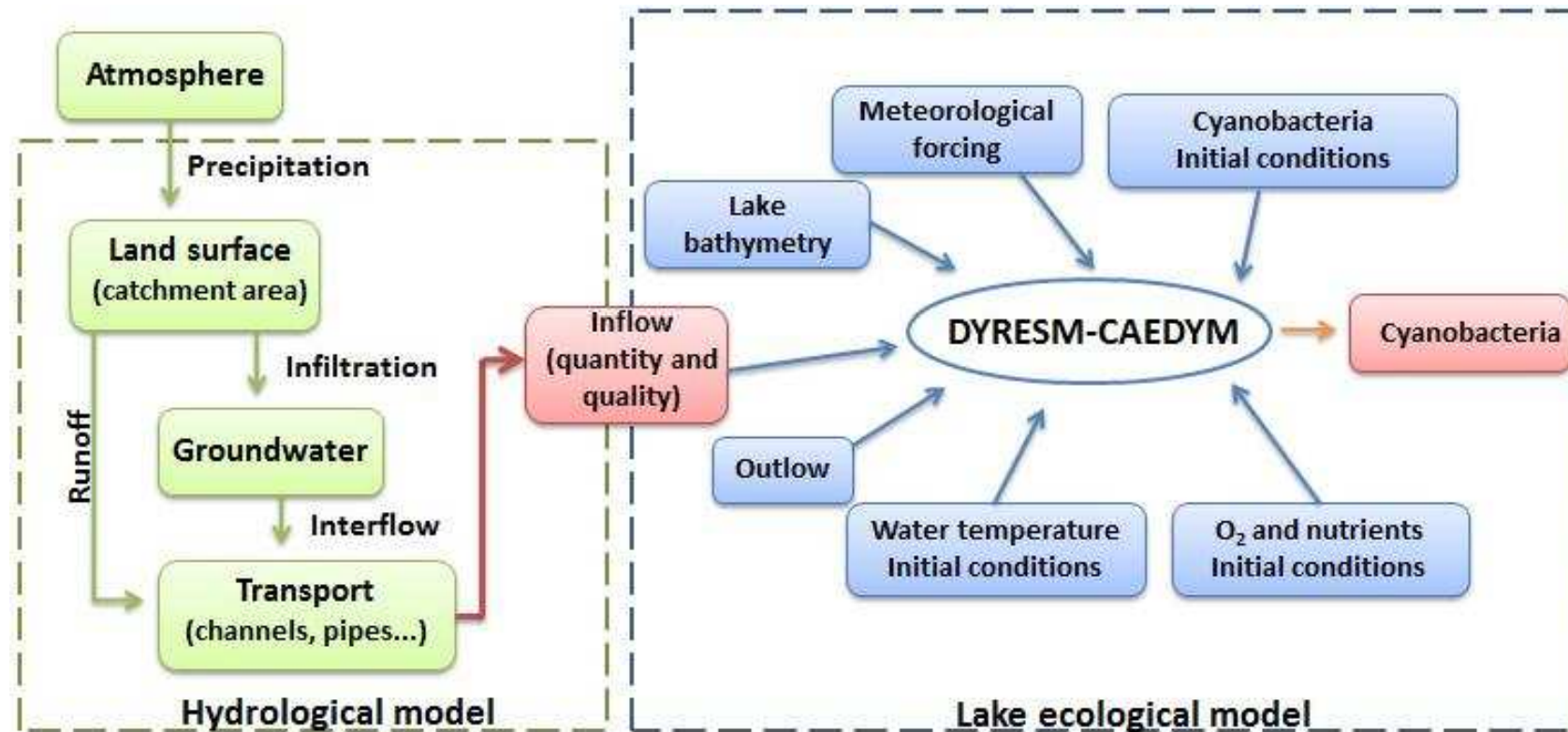
- Watershed hydrological model + Lake ecological model



Why a modelling approach?

INTEGRATED APPROACH

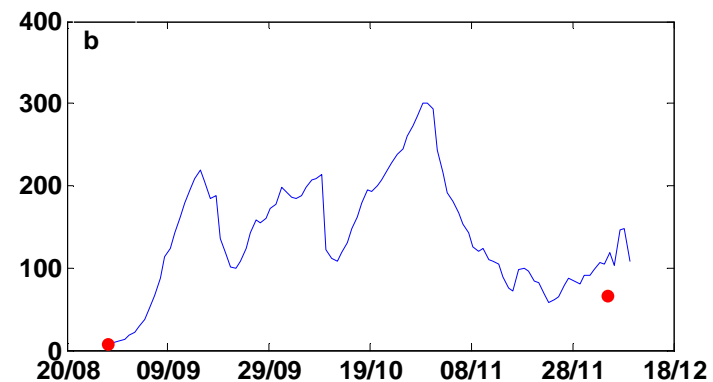
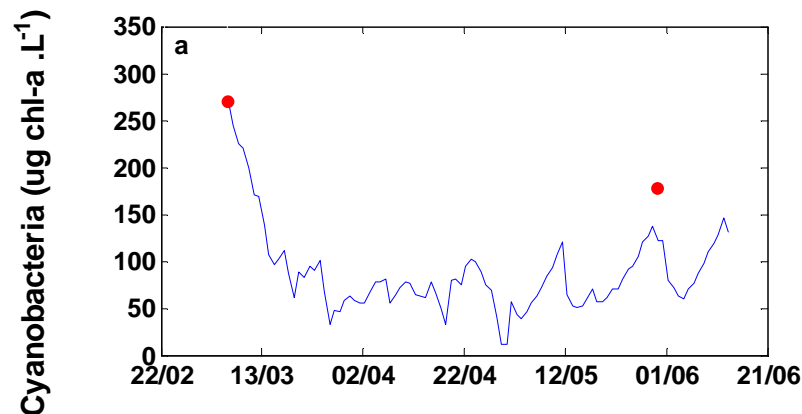
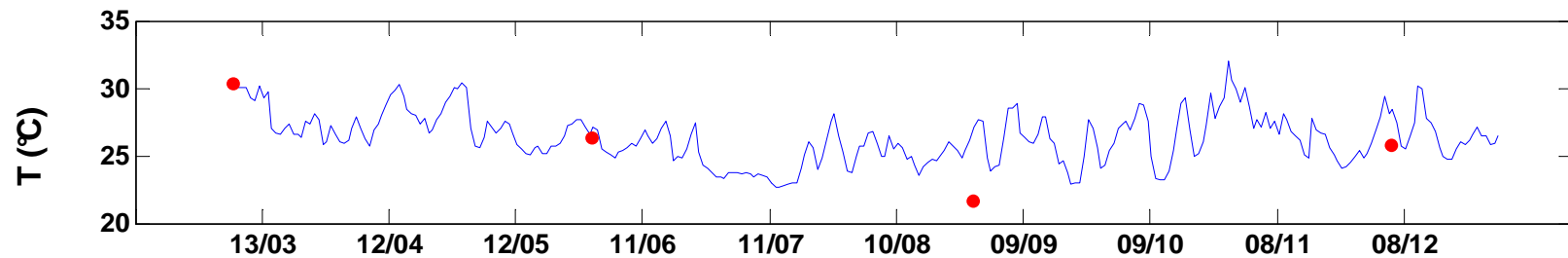
- Watershed hydrologic model + Lake ecological model



Lake response x Different scenarios of watershed evolution:
Land-use changes, impervious area expanding...

LAKE ECOLOGICAL MODEL

- Belo Horizonte municipality data
- Cyanobacteria species:
 - *Nostocaceae*, *Microcystis wesenbergii*, *Sphaerocavum* sp.
- Cyanobacteria modelling: on-going



CONCLUSIONS

○ Lake Enghien

- Warning system
- High frequency lake monitoring
- Cyanobacteria dynamics modelling
- Few data about the catchment

○ Lake Pampulha

- Management tool
- High frequency watershed monitoring *in progress*
- High frequency lake monitoring *from September/2011*
- Cyanobacteria dynamics modelling *preliminary results*
- Watershed modelling and scenarios

NEWS BULLETIN: AN OCCURENCE OF CYANOBACTERIA (BLUE-GREEN ALGAE)
HAS BEEN DETECTED IN CHAMCOOK LAKE



THANK YOU FOR YOUR ATTENTION!