



**HAL**  
open science

## Desiccation and cracking behaviour of clay layer from slurry state under wetting-drying cycles

Chaosheng Tang, Yu-Jun Cui, Bin Shi, Anh Minh A.M. Tang, Chun Liu

► **To cite this version:**

Chaosheng Tang, Yu-Jun Cui, Bin Shi, Anh Minh A.M. Tang, Chun Liu. Desiccation and cracking behaviour of clay layer from slurry state under wetting-drying cycles. *Geoderma*, 2011, 166, pp.111-118. 10.1016/j.geoderma.2011.07.018 . hal-00629665

**HAL Id: hal-00629665**

**<https://enpc.hal.science/hal-00629665>**

Submitted on 6 Oct 2011

**HAL** is a multi-disciplinary open access archive for the deposit and dissemination of scientific research documents, whether they are published or not. The documents may come from teaching and research institutions in France or abroad, or from public or private research centers.

L'archive ouverte pluridisciplinaire **HAL**, est destinée au dépôt et à la diffusion de documents scientifiques de niveau recherche, publiés ou non, émanant des établissements d'enseignement et de recherche français ou étrangers, des laboratoires publics ou privés.



1 **Abstract**

2 Laboratory tests were conducted to investigate the effect of wetting-drying (W-D)  
3 cycles on the initiation and evolution of cracks in clay layer. Four identical slurry  
4 specimens were prepared and subjected to five subsequent W-D cycles. The water  
5 evaporation, surface cracks evolution and structure evolution during the W-D cycles  
6 were monitored. The effect of W-D cycles on the geometric characteristics of crack  
7 patterns was analyzed by image processing. The results show that the desiccation and  
8 cracking behaviour was significantly affected by the applied W-D cycles: the  
9 measured cracking water content  $\theta_c$ , surface crack ratio  $R_{sc}$  and final thickness  $h_f$  of  
10 the specimen increased significantly in the first three W-D cycles and then tended to  
11 reach equilibrium; the formed crack patterns after the second W-D cycle were more  
12 irregular than that after the first W-D cycle; the increase of surface cracks was  
13 accompanied by the decrease of pore volume shrinkage during drying. In addition, it  
14 was found that the applied W-D cycles resulted in significant rearrangement of  
15 specimen structure: the initially homogeneous and non-aggregated structure was  
16 converted to a clear aggregated-structure with obvious inter-aggregate pores after the  
17 second W-D cycle; the specimen volume generally increased with increasing cycles  
18 due to the aggregation and increased porosity. The image analysis results show that  
19 the geometric characteristics of crack pattern were significantly influenced by the  
20 W-D cycles, but this influence was reduced after the third cycle. This is consistent  
21 with the observations over the experiment, and indicates that the image processing can  
22 be used for quantitatively analyzing the W-D cycle dependence of clay desiccation  
23 cracking behaviour.

24

25 **Keywords:** wetting-drying cycle; clay layer; desiccation crack; aggregate formation;  
26 image processing; crack pattern

## 1 **Introduction**

2 The formation of desiccation cracks on soil surface due to loss of water is a common  
3 natural phenomenon, and can significantly affect the soil performance in various  
4 geotechnical, agricultural and environmental applications. For example, a cracked soil  
5 is more compressible than an intact one at the same water content and the overall  
6 mechanical strength is weakened due to the presence of cracks (Morris et al., 1992).  
7 The size (width, length and depth), tortuosity, spatial distribution and connectivity of  
8 cracks govern the rate and the velocity at which solutes and microorganisms are  
9 transported in the soil, and thus control the dispersal of substances in soil (Horgan and  
10 Young, 2000). Most importantly, the soil hydraulic properties are directly controlled  
11 by the desiccation crack networks (Chertkov and Ravina, 1999; Chertkov, 2000).  
12 Many previous studies have indicated that the hydraulic conductivity of cracked soils  
13 is several orders of magnitude greater than that of intact soils (Boynton and Daniel,  
14 1985; Albrecht and Benson, 2001). This issue is therefore a major concern in design  
15 and construction of low permeability structures as clay buffers and barriers for nuclear  
16 waste isolation, liners and covers for landfill, etc.

17 Over the past decades, a number of field studies and laboratory experiments have  
18 been undertaken to investigate the initiation and propagation of desiccation cracks in  
19 soils (Corte and Higashi 1960; Kleppe and Olson, 1985; Morris et al., 1992; Konrad  
20 and Ayad, 1997; Miller et al., 1998; Velde, 1999; Nahlawi and Kodikara, 2006; Tang  
21 et al., 2008; Tang et al., 2010). However, these investigations have been largely  
22 qualitative and most are limited in the description of desiccation cracking phenomena.  
23 More recently, techniques for quantifying the main features of the crack patterns have  
24 evolved from direct field measurement to more sophisticated analysis by image  
25 processing (Miller et al., 1998; Velde, 1999; Vogel et al., 2005). Image analysis has  
26 proved to be a powerful tool by which several geometric and morphologic parameters  
27 such as crack width, length, area, angle and their distribution characteristics can be  
28 determined effectively. In addition, some modelling and theoretical studies on  
29 desiccation cracking have also been conducted (Abu-Hejleh and Znidarčić, 1995;  
30 Ayad et al., 1997; Konrad and Ayad, 1997; Chertkov and Ravina, 1998; Chertkov,  
31 2000; Chertkov, 2002; Deng and Shen, 2006; Péron, 2008; Péron et al., 2009a).  
32 However, as soil is a highly complex material, the desiccation cracking behavior is  
33 governed by a large number of factors including mineral composition, clay content,  
34 relative humidity, temperature, layer thickness, boundary conditions etc. (Fang, 1997;  
35 Albrecht and Benson, 2001; Nahlawi and Kodikara, 2006; Rodríguez et al., 2007;  
36 Tang et al., 2007; Tang et al., 2008; Tang et al., 2010). It is therefore difficult to  
37 propose a rational model to describe this complex phenomenon with a reasonable  
38 number of parameters. The essential mechanism of desiccation cracking is still not  
39 well understood today and the prediction of cracks initiation and the associated crack  
40 network propagation also faces several challenges.

41 It is recognised that the soil in-situ is subject to diurnal changes and seasonal rainy  
42 and sunny weather, and undergoes periodical wetting-drying (W-D) cycles. Several  
43 studies have been performed to investigate the effect of wetting and drying on soil

1 physical properties (Rao et al., 2001; Alonso et al., 2005; Nowamooz et al., 2009,  
2 Tang et al. 2011). However, the relationship between W-D cycles and desiccation  
3 cracking behaviour is still not clearly understood. In this study, the effect of W-D  
4 cycles on cracking behaviour was investigated by subjecting a group of initially  
5 saturated clay layers to five W-D cycles. The initiation and evolution of cracks on the  
6 specimen surface during the cycles were monitored. The geometric characteristics of  
7 surface crack patterns are described and quantified through image processing and the  
8 mechanisms involved are discussed.

## 10 **Material and methods**

### 11 *Material*

12 The Romainville clay was used in this investigation. The physical properties are  
13 presented in Table 1. This clay is a lagoonal-marine deposit which is part of the Paris  
14 Basin Tertiary (Oligocene) formations. It is widely distributed over the eastern region  
15 of Paris, and has been considered responsible for the large amount of damages to  
16 buildings due to the swelling-shrinkage and cracking phenomenon. Various studies  
17 have been undertaken to analyse the hydro-mechanical behaviour of the clay under  
18 weather effects such as W-D cycles (Audiguier et al., 2007; Laribi et al., 2008;  
19 Geremew et al., 2009; Tang et al., 2009a; Tang et al., 2009b). However, little attention  
20 has been paid to the effect of W-D cycles on the desiccation cracking behaviour.

### 22 *Test methods*

23 The air-dried Romainville clay was crushed and sieved at 2 mm. Saturated slurry  
24 specimens were prepared by mixing the crushed powder with distilled water at a water  
25 content of approximately 170 % ( $\text{g g}^{-1}$ ) (Note that all the given water contents of the  
26 tested specimens in the next sections is 'gravimetric' water content, unless otherwise  
27 specified). A desired quantity of slurry was then poured into glass cups (117 mm in  
28 diameter). To remove entrapped air bubbles in the slurry, these cups were placed on a  
29 vibration device for 5 minutes. Finally, the cups were sealed with plastic membrane  
30 and left for at least 3 days. The final settled layer thickness was about 10 mm.

31 Four parallel specimens were prepared and dried at constant room temperature  
32 ( $25 \pm 1$  °C,  $50 \pm 5$  % of relative humidity) until the weight of specimen was stabilized,  
33 i.e., the first W-D cycle was completed. The subsequent wetting was started by  
34 pouring distilled water directly into the glass cups. During this wetting process,  
35 sufficient water was provided to ensure full submergence of the specimen and no  
36 mixing was applied. The glass cups were again sealed with plastic membrane to  
37 prevent water evaporation. After three days, the specimens were exposed to room  
38 conditions to be dried again. This procedure was repeated and finally a total of five  
39 W-D cycles was applied.

40 The schematic set-up used in this study is illustrated in Fig. 1. In order to measure  
41 the variation of water content during drying, the specimen was placed on a balance

(with an accuracy of 0.01 g) to monitor the weight. A digital camera was fixed above the specimens to capture the surface image during wetting and drying cycles in different time steps. Fig. 2 presents a typical crack pattern taken during the first drying path. With the application of image processing, the surface crack ratio ( $R_{sc}$ ) or crack intensity factor CIF (Miller et al., 1998), defined as the ratio of the area of cracks to the total initial area of specimen, was determined to quantify the cracking extent during drying. At the end of each W-D cycle, other geometric parameters - the number of intersections per unit area  $N_{int}$ , number of crack segments per unit area  $N_{seg}$ , mean crack length  $L_{av}$ , mean crack width  $W_{av}$  and mean clod area  $A_{av}$  - were also determined from the final crack patterns. Note that the crack length was determined by calculating the length of the mid-axis of crack segment between two intersections. For this purpose, a skeletonising operation (Gonzalez and Woods, 2002) was initially performed by repeatedly removing pixels from the boundaries of cracks until they are reduced to single-pixel-wide skeletons. The crack width was sampled in orthogonal direction and the shortest distance between the crack boundaries was calculated. The clods are surrounded by cracks, and their areas are defined as the pixel number of the regions. All these parameters were obtained by applying the software CIAS which was developed by our research group. More details can be found in Liu et al. (2008) and Tang et al. (2008). Eight clods were selected from each specimen in the end of each drying period to determine their thickness using calliper, and the mean value is regarded as the final thickness of specimen layer.

In order to investigate the volume shrinkage behaviour of specimens during drying, four other identical specimens were prepared following the same procedure described above. During the first drying path, small clods were taken from the specimens in different time steps to determine their water contents  $\theta$  and density  $\rho$ . The clod volume used for the density determination was measured by immersing it in a non-wetting hydrocarbon liquid. Then the void ratio  $e$  and the corresponding degree of saturation  $S_r$  of specimens can be determined using the following equations:

$$e = \frac{\rho_s (1 + 0.01\theta)}{\rho} - 1 \quad (1)$$

$$S_r = \frac{\theta \rho_s}{e} \quad (2)$$

where  $\rho_s$  is the density of the solid phase of the Romainville clay, equal to 2.79 Mg m<sup>-3</sup> (Table 1).

## Results

### *Evaporation, shrinkage and cracking process*

The measured water content  $\theta$  at various times  $t$  during the first drying path for the four separate specimens are shown in Fig. 3 (desiccation curve). Two distinct evaporation stages can be indentified: a constant evaporation stage during which water content decreases linearly with time; and a subsequent falling evaporation stage

1 during which water loss slows down gradually until the residual water content of  
2 about 4.3 % is reached.

3 The determined shrinkage curve ( $e$  versus  $\theta$ ) is presented in Fig. 4, from which two  
4 transition points between linear and exponential phases can be determined - the air  
5 entry (AE) point and the shrinkage limit (SL) point (Stirk, 1954; Boivin et al., 2004;  
6 Groenevelt and Grant, 2004; Cornelis et al., 2006; Chertkov, 2007). The water  
7 contents at the point of AE and SL are approximately 18% and 12%, respectively.  
8 After desiccation cracks appear on the surface of the specimen, the surface crack ratio  
9  $R_{sc}$  at different water content  $\theta$  was determined by image processing, and the result is  
10 also plotted in Fig. 4 as the cracking curve ( $R_{sc}$  versus  $\theta$ ). This indicates that the water  
11 content at the onset of cracking ranges from 38 to 43%, which is much higher than the  
12 AE value. Therefore the specimens are still fully saturated as cracking occurs. During  
13 the initial stage, the  $R_{sc}$  increases rapidly with decreasing water content and  
14 decreasing pore volume. However, with further drying, the increment of  $R_{sc}$  slows  
15 down once the water content is close to AE point ( $\theta = 18\%$ ). After the SL ( $\theta = 12\%$ ) is  
16 reached, the  $R_{sc}$  approaches a relative steady value of 14.6-15.8 % for the four  
17 separate specimens.

### 19 *Cracking water content, final surface crack ratio and layer thickness*

20 During drying, when the first crack is observed on the specimen surface, the  
21 corresponding water content is herein defined as the cracking water content  $\theta_c$ . Fig. 5  
22 shows the determined  $\theta_c$  of the four specimens during each drying path. It indicates  
23 that  $\theta_c$  increases rapidly during the first three drying paths, and does not change  
24 significantly during the subsequent fourth and fifth drying paths. For instance, the  
25 mean value of  $\theta_c$  of the four specimens during the first drying path is 40.5%;  
26 increasing to 76.1% during the third drying path, whereas the mean value of  $\theta_c$  during  
27 the fifth drying path is 80.2%, only 1.2% higher than the fourth drying path.

28 After each W-D cycle, the final surface crack ratio  $R_{sc}$  and the mean final thickness  
29  $h_f$  were also determined and are presented in Fig. 6 and Fig. 7 respectively. Similar to  
30  $\theta_c$ , the final mean value of  $R_{sc}$  and  $h_f$  of the four specimens also increase quickly in  
31 the first three W-D cycles, while the increment rate slows down in the subsequent  
32 cycles.

### 34 *Geometric parameters of crack pattern*

35 Quantitative analysis of the crack pattern is important when studying clay cracking.  
36 Indeed, the geometric parameters are helpful in evaluating the hydro-mechanical  
37 properties of the clay-water system. They are also related to the variation of the  
38 stress-strain state and may provide a way to investigate the essential mechanisms of  
39 cracking. In addition, the crack propagation behavior and the geometric characteristics  
40 of the crack pattern reflect the material plasticity and mineral compositions. Perrier et  
41 al. (1995) indicated that if the real structure features of crack pattern can be  
42 determined, the soil response to wetting and drying can be predicted.

1 Table 2 summarizes the mean values of the geometric parameters which were  
2 determined from the final crack patterns after each W-D cycle, the corresponding  
3 standard deviation (SD) are also presented. It is found that the mean values of all the  
4 parameters in the first three cycles are much more variable than that in the subsequent  
5 cycles. For  $N_{\text{int}}$  and  $N_{\text{seg}}$ , they reach the maximum value after the second cycle and  
6 decrease after the third cycle. After that,  $N_{\text{int}}$  and  $N_{\text{seg}}$  increase slightly with further  
7 increase of W-D cycles. Moreover, the ratio of  $N_{\text{seg}}/N_{\text{int}}$  is greater than 1.5 and less  
8 than 2 for all the cycles, indicating that, three or four crack segments sharing one  
9 intersection, is the dominant outline of the crack pattern. For  $L_{\text{av}}$ , the maximum and  
10 the minimum values are 8.43 mm and 7.57 mm respectively after the first and second  
11 cycle. It is between 8.07 and 8.22 mm after the third cycle and no obvious trend can  
12 be observed. For  $W_{\text{av}}$ , the minimum value is 1.01 mm that is observed after the first  
13 cycle; it reaches a maximum value at 1.86 mm after the third cycle and decreases  
14 slightly in the subsequent cycles. Based on the obtained values of  $L_{\text{av}}$  and  $W_{\text{av}}$ , it can  
15 be deduced that most of the formed cracks in the first drying cycle are slim and  
16 threadlike. For  $A_{\text{av}}$ , the maximum value is 1.18 cm<sup>2</sup> observed after the first cycle. It  
17 generally decreases with increasing cycles and finally stabilizes at 0.65 cm<sup>2</sup>,  
18 indicating that the clods become smaller due to fragmentation. These results indicate  
19 that the geometric and morphologic characteristics of crack patterns are significantly  
20 influenced by W-D cycles, but the influence intensity declines after the third cycle.  
21 Moreover, the corresponding SD of the determined parameters generally decreases  
22 with increasing cycles, indicating that the initial densities, sizes or dimensions of the  
23 crack elements show significant variability but become more homogeneous under the  
24 effects of W-D cycles.

## 26 **Visual observations and discussion**

### 27 *Crack pattern and structure evolution after W-D cycles*

28 Fig. 8 presents the typical crack pattern after each W-D cycle. It indicates that the  
29 specimen surface was split to separate clods by the crack networks. After the first  
30 W-D cycle (Fig.8 (a)), the shapes of the clods are relatively regular and most of the  
31 clods are close to quadrangles or pentagons; the crack segments are smooth and  
32 generally perpendicular to each other. This is consistent with the observations of  
33 Vogel et al. (2005) and Peron et al. (2009b), and can be explained using the maximum  
34 stress release criterion and crack propagation criterion (Lachenbruch, 1962; Morris et  
35 al., 1992).

36 After the second W-D cycle (Fig. 8 (b)), the shapes of the separated clods are more  
37 irregular and the crack segments are more jagged than that observed in Fig. 8 (a). The  
38 second W-D cycle also caused dramatic aggregate formation from the initially  
39 non-aggregated structure. The formed clods were degraded significantly and a large  
40 number of inter-aggregate pores can be observed.

41 Figs. 8 (c), (d) and (e) indicate that the geometric and morphologic characteristics  
42 of the crack patterns are similar to each other after the third, fourth and fifth W-D



1 cycle. This observation is consistent with the quantitative results of the geometric  
2 parameters in Table 2. In the tests of Yesiller et al. (2000) and Tang et al. (2008), most  
3 cracks after the second and third W-D cycles were found to be situated at the same  
4 locations as that after the first W-D cycle. However, this was not evident in this study  
5 when comparing Figs. 8 (a), (b) and (c). This can be attributed to the heterogeneous  
6 aggregated-structure formed during the wetting process. Many weak zones were  
7 created, which significantly control the start positions of cracks during the subsequent  
8 drying period (Yong and Warkentin, 1975).

9 Based on the results of surface crack ratio  $R_{sc}$  and layer thickness  $h_f$  shown in Figs.  
10 6 and 7, the final total volume of the dried clods (without the cracks) as well as the  
11 increment of porosity after each W-D cycle can be calculated. It is found that, after the  
12 fifth cycle, the porosity of the clods increases by approximately 21%. This is  
13 consistent with the findings of the previous studies on remolded and natural soils  
14 (Sartori et al., 1985; Pires et al., 2008), and can be explained by the progressive  
15 increase in pore volume and the average diameter of the pores with the increase of  
16 W-D cycles (Geremew et al., 2009).

### 18 *Crack pattern evolution and aggregate formation during wetting*

19 A time series of 6 images is shown in Fig. 9 to illustrate the evolution of surface  
20 cracks and aggregate formation process during the second wetting path. For reasons of  
21 simplicity and clarity, only the white marked area in Fig. 8 (a) is presented. Fig. 9 (a)  
22 shows the initial morphology of desiccation crack pattern taken from Fig. 8 (a). Figs.  
23 9 (b) and (c) indicate that injecting water led to immediate collapse of the clods: the  
24 clods were broken down into several small aggregates. Meanwhile, some new  
25 micro-cracks induced by wetting appeared on the specimen's surface.

26 Notably, the collapse or destruction firstly occurred on the clods edges, especially  
27 on the corner positions (circled zones in Fig. 9 (b)). This is because rapid hydration  
28 firstly occurred at these less stable positions, and the previous cracks provided free  
29 spaces for clay swelling.

30 Upon further wetting, the original desiccation cracks tend to be increasingly narrow  
31 due to the filling of the exfoliated aggregates from the clods as well as the volume  
32 swelling of the clods. Fig. 9 (d) shows that the original desiccation cracks were fully  
33 closed after about 2.5 min wetting. However, there were more and more new  
34 micro-cracks induced by wetting. These new cracks are mainly resulted from the  
35 differential swelling pressures and the inner stresses during the wetting process of the  
36 clods. Fig. 9 (d) also shows that the specimen surface is not as flat and smooth as its  
37 initial state, but is 'heaved' along the trace of the original desiccation crack segments,  
38 as quadrangle marked in Figs. 9 (c)-(e). This is because the high swelling potential of  
39 the clay minerals was constrained so that the clods jostle against each other.

40 Comparison between Fig. 9 (e) and Fig. 9 (f) shows that the surface morphologies  
41 are similar to each other. The edges of the aggregates are clear and the  
42 wetting-induced new cracks can still be identified even after a long time (72 hours)  
43 has elapsed. However, in the test of Tang et al. (2008), the aggregates breakdown into

1 individual fine particles and the new cracks were completely closed after a short  
2 wetting time of 2 hours. This can be attributed to the different clay fractions in the  
3 studied materials. For Romainville clay, the clay fraction is 79 %, which is 57%  
4 higher than Xiashu clayey soil used by Tang et al. (2008). The dispersion of  
5 aggregates was therefore prevented by the strong bonds between clay particles.

6 Pictures of the specimen subjected to the third wetting path are presented in Fig. 10.  
7 The observations are slightly different from the second wetting process (Fig. 9). After  
8 water was poured into the glass cup, clods degraded rapidly and some small aggregate  
9 plates floated on the water surface (Fig. 10 (a)). About 1.5 min later, the original  
10 desiccation cracks were fully closed (Fig. 10 (b)); after a period of 72 h wetting, all  
11 the clods were broken down and a large amount of individual aggregates can be  
12 observed (Fig. 10 (c)). However, no new micro-cracks or “jostle effects” were  
13 observed, as in the second wetting path (Fig. 9).

14 During the fourth and fifth wetting paths, no significant difference was observed as  
15 compared to the third wetting path, and as a result, no pictures are presented.

### 17 *Effect of W-D cycles on cracking water content*

18 Fig. 5 demonstrates that the W-D cycles result in significant increase in cracking  
19 water content  $\theta_c$ . Moreover, near 90% of the increase occurs in the first three cycles.  
20 Previous studies indicate that cracking occurs when the tensile stress induced by the  
21 developed suction exceeds the tensile strength of the specimen (Corte and Higashi,  
22 1960; Morris et al., 1992; Miller et al., 1998; Péron et al., 2009b). The effects of W-D  
23 cycles on this cracking behaviour can be explained by considering the specimen fabric,  
24 as follows:

25 i) during W-D cycles, volume shrinkage and cracking would result in irreversible  
26 fabric changes, decrease of specimen integrity and increase of weak zones in  
27 specimen (Yong and Warkentin, 1975). As a result, the specimen tensile strength was  
28 reduced, promoting specimen cracking at a higher  $\theta_c$  upon the subsequent drying;

29 ii) the multiple W-D cycles gave rise to an increase in material heterogeneity as  
30 discussed in the above sections. For instance, after the first W-D cycle, the initial  
31 homogenous structure was changed to aggregated-structure during the subsequent  
32 W-D cycles (Fig. 8). Due to the non-uniform distribution characteristics of aggregate  
33 sizes and inter-aggregate pore sizes, the tensile stresses developed during subsequent  
34 drying cycles would be also non-uniform and can easily be concentrated at defects  
35 with lower tensile strength. Weinberger (1999) and Tang et al. (2008) have observed  
36 that cracks first initiated at surface defects, and emphasized that the surface defects  
37 can trigger or promote crack initiation due to shrinkage distortion of the surrounding  
38 medium and tensile stress concentration.

39 Note that because of the difficulty in drying tests, there has been no experimental  
40 data concerning the actual value of the local water content at the moment of crack  
41 initiation. The commonly measured water content in the laboratory is a mean value  
42 and can not completely reflect the moisture distribution characteristics in localised  
43 positions. To reduce the test error, the simplest way is to prepare an initially relatively

1 homogenous specimen with a limited thickness – thus thin layer (10 mm thick) slurry  
2 specimens were prepared in this study. Generally, the physical, hydraulic and  
3 mechanical properties of the specimen vary permanently with moisture changes  
4 during drying. In order to better understand the intrinsic mechanism of desiccation  
5 cracking , future studies should also take into account some dynamic factors such as  
6 evaporation rate, suction development rate, volume shrinkage rate and tensile strength  
7 development rate, in addition to the critical water content  $\theta_c$  .  
8

### 9 *Equilibrium state during multiple W-D cycles*

10 Based on all the results shown in Figs. 5 ( $\theta_c$ ), 6 ( $R_{sc}$ ), 7 ( $h_f$ ) and Table 2, it can be  
11 concluded that the cracking behaviour reached a relative equilibrium state after the  
12 specimens were subjected to the third cycle. This conclusion is also supported by the  
13 observations shown Fig. 8: no significant difference can be observed for the crack  
14 patterns after the third, fourth and fifth W-D cycle. Presumably the rearrangement of  
15 specimen fabric diminishes and finally ceases after certain a number of W-D cycles.

16 Previous studies on this subject also confirmed that there is an equilibrium state  
17 during multiple W-D cycles, but the corresponding numbers of cycles depend on  
18 material nature especially the clay fraction. Generally, clayey soils with high plasticity  
19 need more W-D cycles to reach the equilibrium state than silty or sandy soils  
20 (Al-Wahab and EI-Kedrah, 1995; Yesiller et al. 2000; Omid et al., 1996).  
21

## 22 **Conclusions**

23 Desiccation and cracking behaviour of clay layers from a slurry state upon five  
24 wetting-drying (W-D) cycles were investigated through laboratory experiments. The  
25 process of water evaporation, surface cracks evolution, structure evolution and  
26 volume shrinkage behaviour were monitored and have been discussed here. The  
27 geometric characteristics of crack pattern after each W-D cycle were quantitatively  
28 analyzed by image processing. The following conclusions can be drawn:

29 (1) during the first drying path, the water evaporation process is composed of two  
30 stages: a constant rate zone and a subsequent decreasing rate zone; the increase of  
31 surface crack ratio  $R_{sc}$  during drying was accompanied by progressive pore volume  
32 shrinkage, and the  $R_{sc}$  reached stabilization as the water content reached the shrinkage  
33 limit; the final crack pattern was dominated by polygonal clods and smooth crack  
34 networks;

35 (2) during the second wetting path, the poured water resulted in rapid collapse of  
36 clods, and the desiccation cracks formed in the previous drying path were quickly  
37 closed; meanwhile, a large number of new micro-cracks induced by wetting appeared  
38 on the specimen surface that divided the clods into smaller aggregates, and a typical  
39 aggregated-structure was developed and significantly intensified the specimen  
40 heterogeneity; moreover, the second wetting path led to significant rearrangement of  
41 clay particles and modification of the pore network; these processes are generally  
42 irreversible and drastically influence the desiccation cracking behaviour during the

1 subsequent drying path;

2 (3) after the second drying path, since the specimen homogeneity decreased, the  
3 shapes of the clods were more irregular and the crack segments were more jagged  
4 than that observed after the first drying path; the clods showed clear  
5 aggregated-structure with a large amount of inter-aggregate pores; the bonds between  
6 the formed aggregates were broken quickly in the third wetting path and no new  
7 micro-cracks were induced;

8 (4) an equilibrium state can be reached after a certain numbers of W-D cycles; for  
9 the tested Romainville clay, it was observed that the rearrangement of specimen fabric  
10 or structure reached an apparent state of equilibrium after the third W-D cycle: before  
11 that, the measured cracking water content  $\theta_c$ , final surface crack ratio  $R_{sc}$  and layer  
12 thickness  $h_f$  increased significantly with increasing cycles, but after, the effects of  
13 W-D cycles on the cracking behaviour and the cracking pattern became insignificant;

14 (5) image processing provided useful information on the geometric characteristics  
15 of crack patterns. The effect of W-D cycle on desiccation and cracking behaviour can  
16 therefore be quantitatively described through these specific parameters.

17 Generally, field soils are very complex and conditioned by a large number of  
18 variables. Cracking is a 3D phenomenon and the patterns are usually composed of  
19 irregular polygonal shapes. Quantification of a 3D crack pattern is a much more  
20 challenging task than the 2D process described in this investigation. However, it is  
21 believed that the findings of this laboratory experiment are helpful for better  
22 understanding the interrelationship between the sequence of seasonal processes and  
23 the evolution of soils or mud properties. In addition, as multiple W-D cycles can result  
24 in possible changes in clay structure and cracking behaviour, the hydraulic and  
25 mechanical properties of this type of materials must depend on the number of W-D  
26 cycles. Further attention should therefore be paid to the engineering fields where  
27 swelling clays are involved.

28

## 29 **Acknowledgements**

30 This work was supported by the National Natural Science of China (Grant No.  
31 41072211), Research Fund for the Doctoral Program of Higher Education of China  
32 (Grant No. 20090091120037), State Key Program of National Natural Science of  
33 China (Grant No. 40730739) and the College Graduate Student Innovation Program  
34 of Jiangsu Province (CX09B\_011Z). It was performed within the project ANR-RGCU  
35 «Analyse du Retrait-Gonflement et de ses Incidences sur les Constructions » - ARGIC.  
36 All the tests were performed at UR Navier/CERMES, Ecole des Ponts-ParisTech.  
37 Thanks to the two anonymous reviewers for their constructive comments that helped  
38 us to improve the manuscript.

39

## 40 **References**

41 Abu-Hejleh, A.N. and Znidarčić, D., 1995. Desiccation Theory for Soft Cohesive  
42 Soils. *Journal of Geotechnical Engineering*, 121(6): 493-502.

- 1 Albrecht, B.A. and Benson, C.H., 2001. Effect of desiccation on compacted natural  
2 clays. *Journal of Geotechnical and Geoenvironmental Engineering*, 127(1): 67-75.
- 3 Alonso, E.E., Romero, E., Hoffmann, C. and García-Escudero, E., 2005. Expansive  
4 bentonite-sand mixtures in cyclic controlled suction drying and wetting.  
5 *Engineering Geology*, 81: 213-226.
- 6 Al-Wahab, R.M. and El-Kedrah, M.A., 1995. Using fibers to reduce tension cracks  
7 and shrink/swell in compacted clay. In: Acar, Y.B., Daniel, D.E. (Eds.),  
8 *Geoenvironment 2000*. ASCE, New York, pp. 791-805.
- 9 Audiguier, M., Geremew, Z., Laribi, S. and Cojean, R., 2007. Caractérisation au  
10 laboratoire de la sensibilité au retrait-gonflement des sols argileux. *Revue Française*  
11 *de Géotechnique*, 120-121: 67-82.
- 12 Ayad, R., Konrad, J.M. and Soulié, M., 1997. Desiccation of a sensitive clay:  
13 application of the model CRACK. *Canadian Geotechnical Journal*, 34: 943-951.
- 14 Boynton, S.S. and Daniel, D.E., 1985. Hydraulic conductivity tests on compacted clay.  
15 *ASCE Journal of Geotechnical Engineering*, 111(4): 465-478.
- 16 Boivin, P., Garnier, P., Tessier, D., 2004. Relationship between clay content, clay type,  
17 and shrinkage properties of soil samples. *Soil Sci. Soc. Am. J.*, 68: 1145-1153.
- 18 Chertkov, V.Y., 2000. Using surface cracks spacing to predict crack network geometry  
19 in swelling soils. *Soil Science Society of America Journal*, 64:1918-1921.
- 20 Chertkov, V.Y., 2002. Modelling cracking stages of saturated soils as they dry and  
21 shrink. *European Journal of Soil Science*, 53: 105-118.
- 22 Chertkov, V.Y., 2007. The reference shrinkage curve of clay soil. *Theoretical and*  
23 *applied fracture mechanics*, *Theoretical and Applied Fracture mechanics*, 48: 50-67.
- 24 Chertkov, V.Y. and Ravina, I., 1998. Modeling the crack network of swelling clay  
25 soils. *Soil Science Society of America Journal*, 62: 1162-1171.
- 26 Chertkov, V.Y. and Ravina, I., 1999. Tortuosity of crack networks in swelling clay  
27 soils. *Soil Science Society of America Journal*, 63:1523-1530.
- 28 Cornelis, W.M., Corlu, Y.J., Medina, H., Diaz, J., Hartmann, R., Van Meirvenne, M.,  
29 Rui, M., 2006. Measuring and modeling the soil shrinkage characteristic curve.  
30 *Geoderma* 137: 179-191.
- 31 Corte, A. and Higashi, A., 1960. Experimental research on desiccation cracks in soil.  
32 Research report 66: U.S. Army Snow Ice and Permafrost Research Establishment,  
33 Wilmette, Illinois.
- 34 Deng, G. and Shen, Z.J., 2006. Numerical simulation of crack formation process in  
35 clays during drying and wetting. *Geomechanics and Geoengineering*, 1(1):27-41.
- 36 Fang, H.Y., 1997. Introduction to environmental geotechnology. CRC Press, Boca  
37 Raton, FL.
- 38 Geremew, Z., Audiguier, M. and Cojean, R., 2009. Analysis of the behaviour of a  
39 natural expansive soil under cyclic drying and wetting. *Bulletin of Engineering*  
40 *Geology and the Environment*, 68 (3): 421-436.
- 41 Gonzalez, R.C., Woods, R.E., 2002. Digital Image Processing Second Edition.  
42 Publishing House of Electronics Industry, Beijing.
- 43 Groenevelt, P.H., Grant, C.D., 2004. Analysis of soil shrinkage data. *Soil and Tillage*  
44 *Research*, 79: 71-77.

- 1 Horgan, G.W. and Young, I.M., 2000. An empirical stochastic model for the geometry  
2 of two-dimensional crack growth in soil (with discussion). *Geodema*, 96:263-276.
- 3 Kleppe, J.H. and Olson, R.E., 1985. Desiccation cracking of soil barriers. Hydraulic  
4 barriers in soil and rock, STP 874, ASTM, Philadelphia, pp. 263-275.
- 5 Konrad, J.M. and Ayad, R., 1997. An idealized framework for the analysis of cohesive  
6 soils undergoing desiccation. *Canadian Geotechnical Journal*, 34: 477-488.
- 7 Lachenbruch, A.H., 1962. Mechanics of thermal contraction cracks and ice-wedge  
8 polygons in permafrost. Geological Society of America, No 70. New York.
- 9 Laribi, S., Audiguier, M. and Cojean, R., 2008. Assessing shrink/swell properties of  
10 two argillaceous soils from the Paris Basin: a comparison of cation exchange  
11 determination methods. *Bulletin of Engineering Geology and the Environment*,  
12 67(3): 415-424.
- 13 Liu, C., Wang, B.J., Shi, B. and Tang, C.S., 2008. The analysis method of  
14 Morphological parameters of rock and soil crack based on image processing and  
15 recognition. *Chinese Journal of Geotechnical Engineering*, 30(9): 1383-1388. (in  
16 Chinese, with English Abstract)
- 17 Miller, C.J., Mi, H. and Yesiller, N., 1998. Experimental analysis of desiccation crack  
18 propagation in clay liners. *Journal of the American Water Resources Association*,  
19 34(3): 677-686.
- 20 Morris, P.H., Graham, J. and Williams, D.J., 1992. Cracking in drying soils. *Canadian*  
21 *Geotechnical Journal*, 29:263-277.
- 22 Nahlawi, H. and Kodikara, J., 2006. Laboratory experiments on desiccation cracking  
23 of thin soil layers. *Geotechnical and Geological Engineering*, 24(6):1641-1664.
- 24 Nowamooz, H., Mrad, M., Abdallah, A. and Masrouri, F., 2009. Experimental and  
25 numerical studies of the hydromechanical behaviour of a natural unsaturated  
26 swelling soil. *Canadian Geotechnical Journal*, 46(4): 393-410.
- 27 Omid, G.H., Thomas, J.C. and Brown, K.W., 1996. Effect of desiccation cracking on  
28 the hydraulic conductivity of a compacted clay liner. *Water Air and Soil Pollution*,  
29 vol. 89. Kluwer Academic Publishers, Netherlands, pp. 91-103.
- 30 Péron, H., 2008. Desiccation cracking of soils. Ph.D. Thesis, Ecole Polytechnique  
31 Fédérale de Lausanne, Lausanne, Switzerland.
- 32 Péron, H., Delenne, J.Y., Laloui, L. and El Yousoufi, M.S., 2009a. Discrete element  
33 modelling of drying shrinkage and cracking of soils. *Computers and Geotechnics*,  
34 36: 61-69.
- 35 Péron, H., Herchel, T., Laloui, L., Hu, L.B., 2009b. Fundamentals of desiccation  
36 cracking of fine-grained soils: experimental characterization and mechanisms  
37 identification. *Canadian Geotechnical Journal*, 46: 1177-1201.
- 38 Perrier, E., Mullon, C., Rieu, M., 1995. Computer construction of fractal soil  
39 structures: simulation of their hydraulic and shrinkage properties. *Water Resources*  
40 *Research*, 31(12): 2927-2943.
- 41 Pires, L.F., Cooper, M., Cássaro, F.A.M., Reichardt, K., Bacchi, O.O.S. and Dias,  
42 N.M.P., 2008. Micromorphological analysis to characterize structure modifications  
43 of soil samples submitted to wetting and drying cycles. *Catena*, 72: 297-304.
- 44 Rao, S.M., Reddy, B.V.V. and Mutharam, M., 2001. The impact of cyclic wetting and

1 drying on the swelling behavior of stabilized expansive soils. *Engineering Geology*,  
2 60:223-233.

3 Rodríguez, R., Sánchez, M., Ledesma, A. and Lloret, A., 2007. Experimental and  
4 numerical analysis of desiccation of a mining waste. *Canadian Geotechnical*  
5 *Journal*, 44: 644-658.

6 Sartori, G., Ferrari, G.A. and Pagliai, M., 1985. Changes in soil porosity and surface  
7 shrinkage in a remolded, saline clay soil treated with compost. *Soil Science*, 139:  
8 523–530.

9 Stirk, G.B., 1954. Some aspects of soil shrinkage and the effect of cracking upon  
10 water entry into the soil. *Aust. J. Agric. Res.* 5: 279-290.

11 Tang, C.S., Shi, B., Liu, C., Wang, B.J. and Gao, W., 2007. Developing law and  
12 morphological analysis of shrinkage cracks of clayey soil under different  
13 temperatures. *Chinese Journal of Geotechnical Engineering*, 27(5): 743-749. (in  
14 Chinese, with English Abstract)

15 Tang, C., Shi, B., Liu, C., Zhao, L. and Wang, B.J., 2008. Influencing factors of  
16 geometrical structure of surface shrinkage cracks in clayey soils. *Engineering*  
17 *Geology*, 101:204-217.

18 Tang, C.S., Cui, Y.J., Tang, A.M., Shi, B., 2010. Experimental evidence on the  
19 temperature dependence of desiccation cracking behavior of clayey soils.  
20 *Engineering Geology*, 114: 261-266.

21 Tang, A.M., Ta, A.N., Cui, Y.J. and Thiriat, J., 2009a. Development of a large-scale  
22 infiltration tank for determination of the hydraulic properties of expansive clays.  
23 *Geotechnical Testing Journal*, 32(5), doi: 10.1520/GTJ102187.

24 Tang, A.M., Cui, Y.J., Eslami, J. and Defosse, P., 2009b. Analysing the form of the  
25 confined uniaxial compression curve of various soils. *Geoderma*, 148: 282-290.

26 Tang A. M., Vu M. N., Cui Y. J., 2011. Effects of the maximum soil aggregates size  
27 and cyclic wetting-drying on the stiffness of a lime-treated clayey soil.  
28 *Géotechnique* 61 (5), 421-429.

29 Velde, B., 1999. Structure of surface cracks in soil and muds. *Geoderma*, 93:  
30 101–112.

31 Vogel, H.J., Hoffmann, H., Roth, K., 2005. Studies of crack dynamics in clay soil I.  
32 Experimental methods, results, and morphological quantification. *Geoderma*, 125,  
33 203-211.

34 Vogel, H.J., Hoffmann, H., Roth, K., 2005. Studies of crack dynamics in clay soil II. A  
35 physically based model for crack formation. *Geoderma*, 125: 213-223.

36 Weinberger, R., 1999. Initiation and growth of cracks during desiccation of stratified  
37 muddy sediments. *Journal of Structural Geology*, 21: 379-386.

38 Yesiller, N., Miller, C.J., Inci, G. and Yaldo, K., 2000. Desiccation and cracking  
39 behavior of three compacted landfill liner soils. *Engineering Geology*, 57:105-121.

40 Yong, R.N. and Warkentin, B.P., 1975. *Soil properties and behavior*. Elsevier,  
41 Amsterdam.

1 **Tables**

2

3 **Table 1 Physical properties of Romainville clay**

Physical properties	Values
Density of the solid phase	2.79 Mg m <sup>-3</sup>
Liquid limit	77 %
Plastic limit	40 %
Plasticity index	37 %
USUC <sup>a</sup> classification	CH
Clay (<2μm)	79 %
Clay composition	Illite and smectite
Specific surface area	340 m <sup>2</sup> /g

4 a-Unified Soil Classification System

5

6 **Table 2 Mean values of crack quantitative parameters and the**  
 7 **corresponding standard deviation (SD) after each wetting-drying cycle**

After each wetting-drying cycle	$N_{int}$ (cm <sup>-2</sup> )	SD of $N_{int}$	$N_{seg}$ (cm <sup>-2</sup> )	SD of $N_{seg}$	$L_{av}$ (mm)	SD of $L_{av}$	$W_{av}$ (mm)	SD of $L_{av}$	$A_{av}$ (cm <sup>2</sup> )	SD of $L_{av}$
First	1.09	0.17	1.78	0.12	8.43	4.50	1.01	0.63	1.18	1.20
Second	1.52	0.12	2.45	0.19	7.57	3.75	1.52	0.49	0.78	0.56
Third	1.37	0.08	2.13	0.11	8.12	3.42	1.86	0.42	0.69	0.53
Fourth	1.43	0.05	2.16	0.08	8.07	3.31	1.74	0.38	0.65	0.53
Fifth	1.44	0.07	2.22	0.05	8.22	2.75	1.73	0.37	0.65	0.49



8 **Figure captions**

9 Fig. 1 Schematic drawing of set-up

10 Fig. 2 A typical desiccation crack pattern of specimen during the first  
11 drying path

12 Fig. 3 Desiccation curves of the specimens during the first drying path

13 Fig. 4 Variation of surface crack ratio  $R_{sc}$  and void ratio  $e$  with water  
14 content  $\theta$  during the first drying path

15 Fig. 5 Cracking water content  $\theta_c$  of the specimens during each drying path

16 Fig. 6 Surface crack ratio  $R_{sc}$  after each W-D cycle

17 Fig. 7 Mean thickness  $h_f$  of specimen layer after each W-D cycle

18 Fig. 8 Typical desiccation crack patterns after each W-D cycle (pictures  
19 were taken from the same specimen)

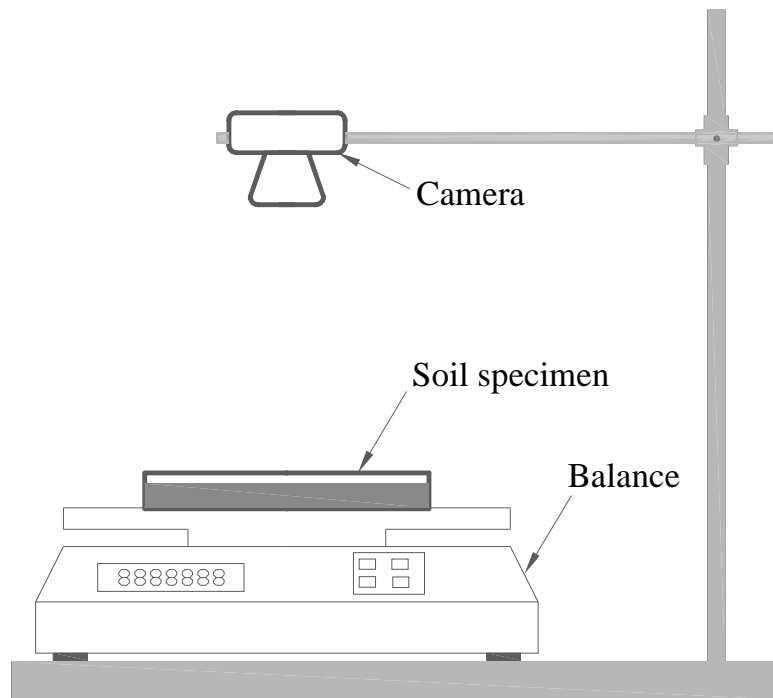
20 Fig. 9 Evolution of crack pattern during the second wetting path

21 Fig. 10 Evolution of surface cracks during the third wetting path

22

23

24 **Figures**



25

26

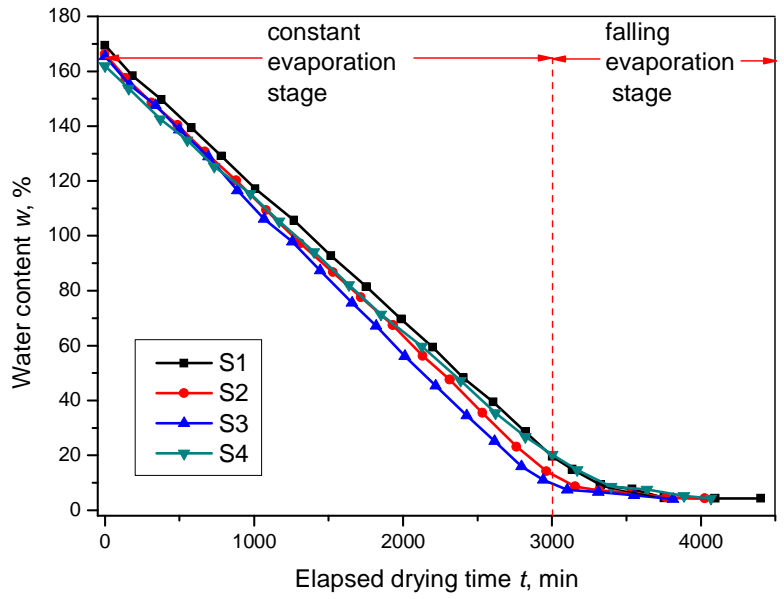
Fig. 1 Schematic drawing of set-up

27



28

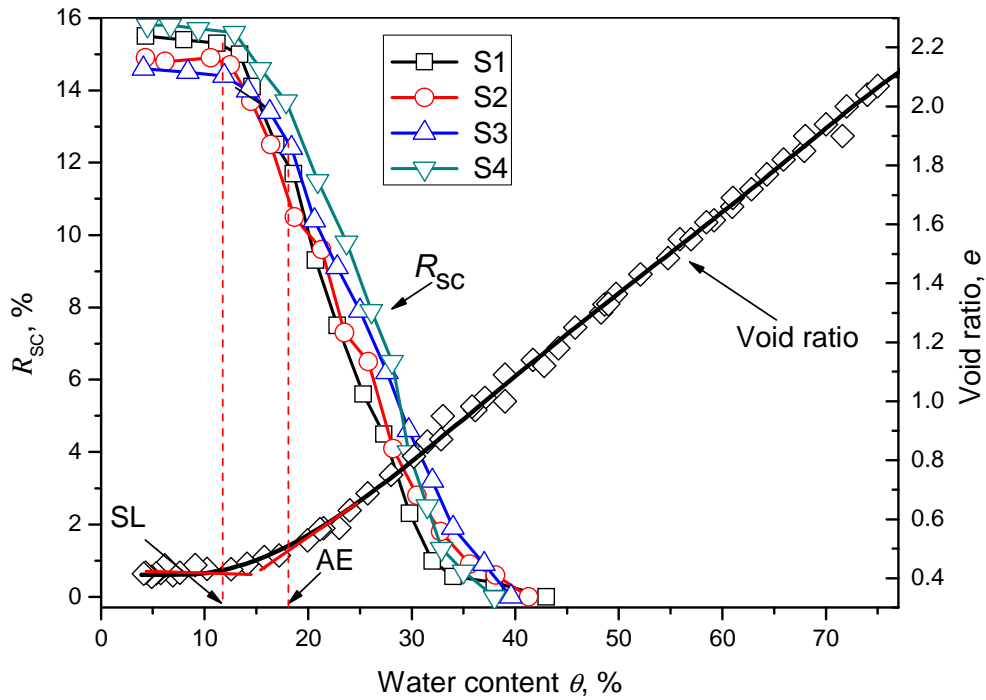
29 Fig. 2 A typical desiccation crack pattern of specimen during the first  
30 drying path



31

32 Fig. 3 Desiccation curves of the specimens during the first drying path

33

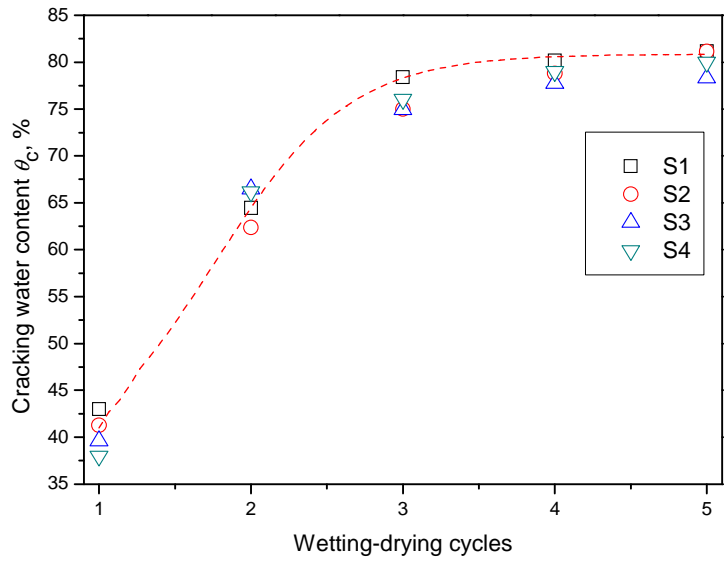


34

35 Fig. 4 Variation of surface crack ratio  $R_{sc}$  and void ratio  $e$  with water

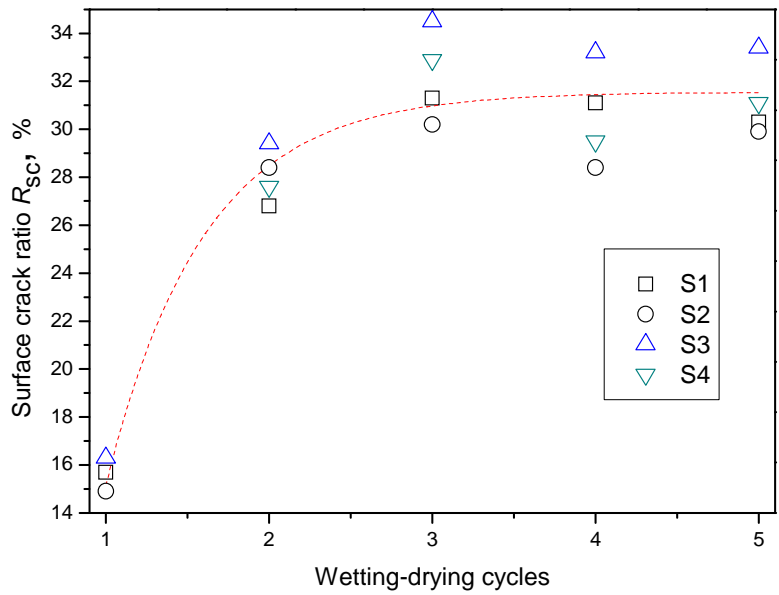
36 content  $\theta$  during the first drying path

37



38

39 Fig. 5 Cracking water content  $\theta_c$  of the specimens during each drying path

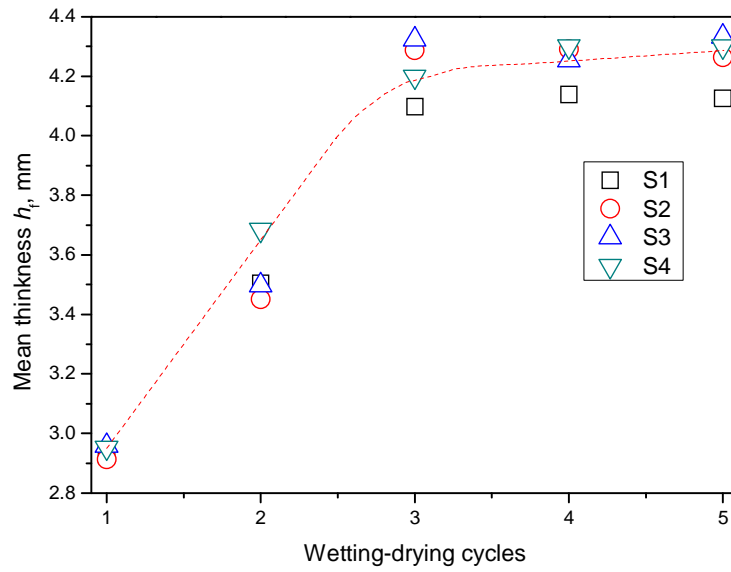


40

41 Fig. 6 Surface crack ratio  $R_{sc}$  after each W-D cycle

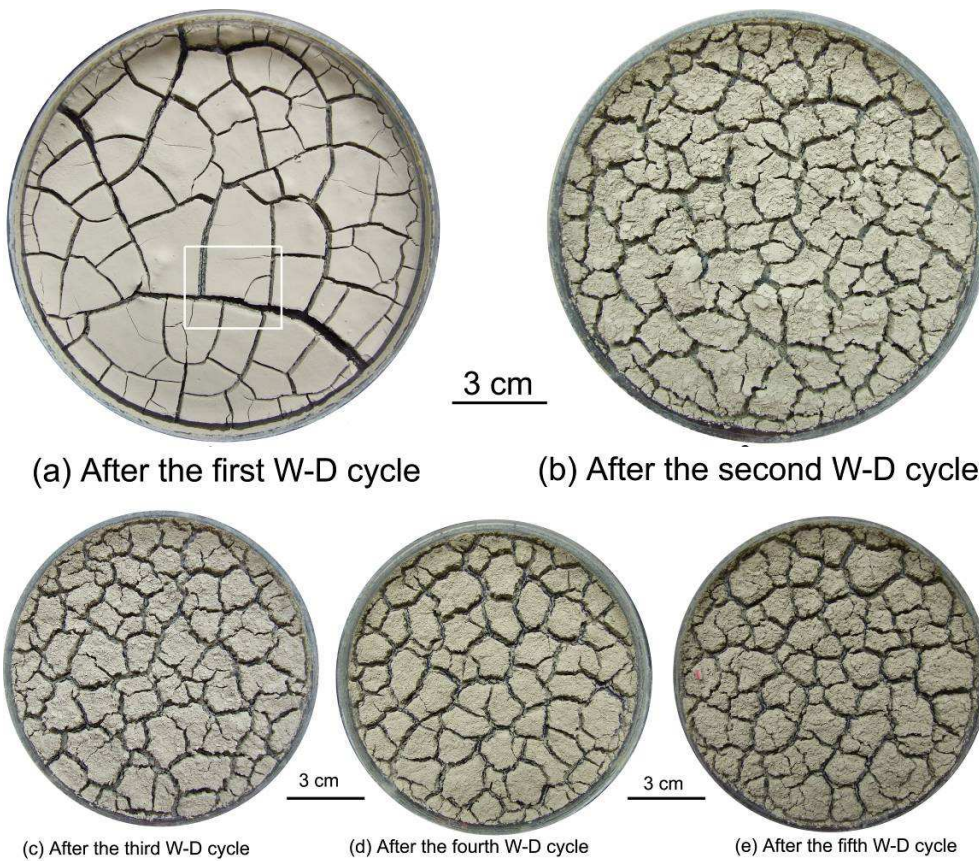
42

43



44

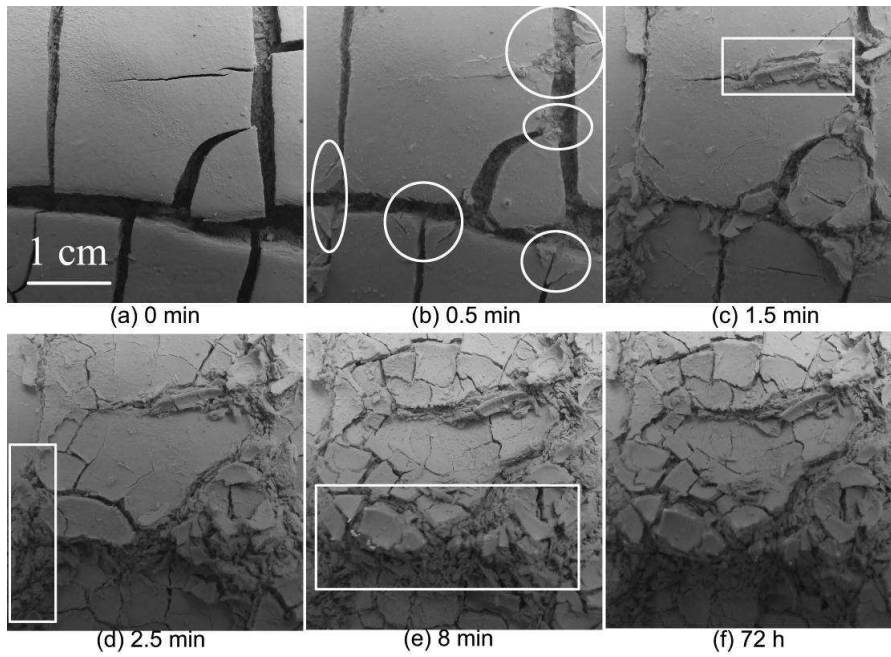
45 Fig. 7 Mean thickness  $h_f$  of specimen layer after each W-D cycle



46

47 Fig. 8 Typical desiccation crack patterns after each W-D cycle (pictures

48 were taken from the same specimen)



50

51

Fig. 9 Evolution of crack pattern during the second wetting



52

53

54

55

Fig. 10 Evolution of surface cracks during the third wetting path